

17560 SERIES

FLOOR-MOUNT, Bearing Plate Type

APPLICATION

For use with lavatories furnished with hangers that require a carrier for support with bearing plate and where thin wall construction demands uprights that support the fixture completely independent of the wall.

SPECIFICATION

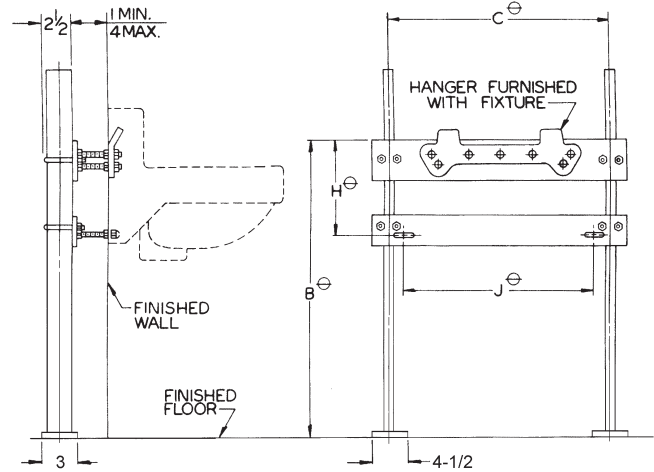
JOSAM 17560 Series floor-mounted, single Lavatory Carrier with hanger and bearing plate, adjustable supporting rods, structural uprights, welded feet and chrome-plated trim.

Available Options

- ▼ -BB Back-to-Back Carrier -10 Hardware for Walls over 4", Specify Wall Thickness
- ▼ -UR Urinal Carrier
- ▼ -WC Water Cooler Carrier -60 Valve Plate for Attaching to Upright
- ▼ -WCBL Water Cooler Bi-Level Carrier

⊖ VARIABLE – DEPENDS ON FIXTURE
RECOMMEND ALL FEET BE SECURED TO FLOOR WITH 1/2" BOLTS AND ANCHORS BY OTHERS.

REUSABLE ALIGNMENT TOOL AVAILABLE. SEE PAGE 45.



38 LBS

17560-BB SERIES

FLOOR-MOUNT, -BB Back-to-Back

APPLICATION

For use with back-to-back lavatories furnished with hangers that require a carrier for support with bearing plate and where thin wall construction demands uprights that support the fixture completely independent of the wall.

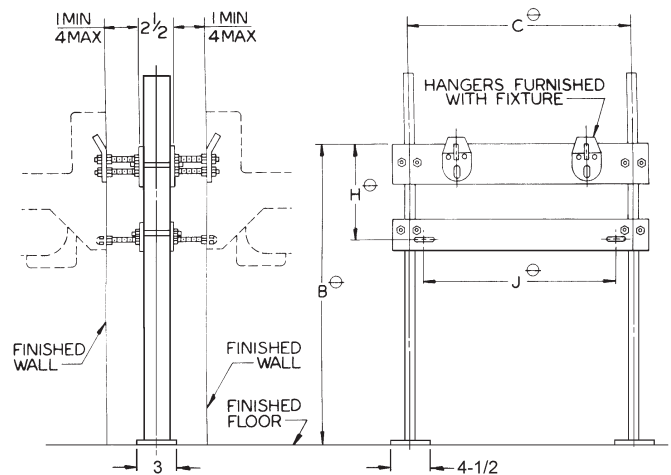
SPECIFICATION

JOSAM 17560-BB Series floor-mounted back-to-back Lavatory Carrier with hanger plates, bearing plates, adjustable supporting rods, structural uprights, welded feet and chrome-plated trim.

OPTIONS N/A:
-UR, -WC, -WCBL

⊖ VARIABLE – DEPENDS ON FIXTURE EXCEPT WHEN STD. PLATE IS FURNISHED. C=18-1/2".
RECOMMEND ALL FEET BE SECURED TO FLOOR WITH 1/2" BOLTS AND ANCHORS BY OTHERS.

REUSABLE ALIGNMENT TOOL AVAILABLE. SEE PAGE 45.



43 LBS

| 17560-UR SERIES | FLOOR-MOUNT, -UR Urinal Carrier |
|---|--|
| <p style="text-align: center;">APPLICATION</p> <p>For use with urinals furnished with hangers that require a carrier for support with bearing plate and where thin wall construction demands uprights that support the fixture completely independent of the wall.</p> | <p>REUSABLE ALIGNMENT TOOL AVAILABLE. SEE PAGE 45.</p> |
| <p style="text-align: center;">SPECIFICATION</p> <p>JOSAM 17560-UR Series floor-mounted single Urinal Carrier with hanger plate, bearing plate, adjustable supporting rods, structural uprights, welded feet and chrome-plated trim.</p> | |
| <p>OPTION N/A -60</p> <p>⊖ VARIABLE – DEPENDS ON FIXTURE EXCEPT WHEN STD. PLATE IS FURNISHED. C=18-1/4" AND E DOES NOT APPLY. RECOMMEND ALL FEET BE SECURED TO FLOOR WITH 1/2" BOLTS AND ANCHORS BY OTHERS.</p> | |
| 38 LBS | |

| 17560-WC SERIES | FLOOR-MOUNT, -WC Water Cooler Carrier |
|---|--|
| <p style="text-align: center;">APPLICATION</p> <p>For use with water coolers furnished with hangers that require a carrier for support with bearing plate and where thin wall construction demands uprights that support the fixture completely independent of the wall.</p> | <p>REUSABLE ALIGNMENT TOOL AVAILABLE. SEE PAGE 45.</p> |
| <p style="text-align: center;">SPECIFICATION</p> <p>JOSAM 17560-WC Series floor-mounted, single Water Cooler Carrier with hanger plate, bearing plate, adjustable supporting rods, structural uprights, welded feet and chrome-plated trim.</p> | |
| <p>OPTION N/A -60</p> <p>⊖ VARIABLE – DEPENDS ON FIXTURE EXCEPT WHEN STD. PLATE IS FURNISHED. C=18-1/4". RECOMMEND ALL FEET BE SECURED TO FLOOR WITH 1/2" BOLTS AND ANCHORS BY OTHERS.</p> | |
| 36 LBS | |

| 17560-WCBL SERIES | FLOOR-MOUNT, -WCBL Water Cooler Bi-Level Carrier |
|--|---|
| <p style="text-align: center;">APPLICATION</p> <p>For use with bi-level water coolers furnished with hangers that require a carrier for support with bearing plate and where thin wall construction demands uprights that support the fixture completely independent of the wall.</p> | <p>UTILIZE A SINGLE ALIGNMENT TOOL TO ALIGN A PAIR OF UPRIGHTS. IF YOU WISH TO BRACE ALL THREE UPRIGHTS SIMULTANEOUSLY, TWO TOOLS ARE NECESSARY. SEE PAGE 45.</p> |
| <p style="text-align: center;">SPECIFICATION</p> <p>JOSAM 17560-WCBL Series floor-mounted, double Water Cooler Carrier with hanger plates, bearing plates, adjustable supporting rods, structural uprights, welded feet and chrome-plated trim.</p> | |
| <p>OPTION N/A -60</p> <p>⊖ VARIABLE – DEPENDS ON FIXTURE. RECOMMEND ALL FEET BE SECURED TO FLOOR WITH 1/2" BOLTS AND ANCHORS BY OTHERS.</p> | |
| 61 LBS | |