

## 17590 SERIES

## WALL-MOUNT, Hanger Plate Type

### APPLICATION

For use with lavatories furnished with hangers that require a carrier for support where wall construction will support the fixture and carrier assembly.

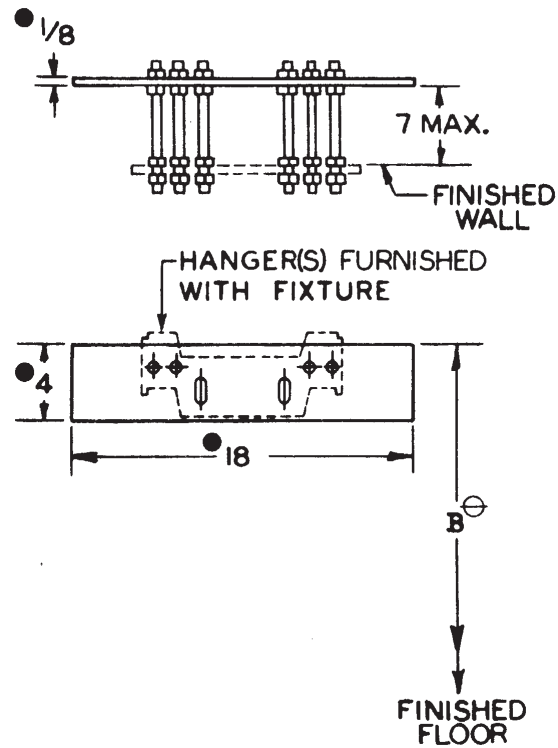
### SPECIFICATION

JOSAM 17590 Series wall-mounted, single Lavatory Carrier with hanger plate and adjustable supporting rods.

### Available Options

- ▼ -DP Double Plate Carrier
- ▼ -UR Urinal Carrier
- 10 Hardware for Walls over 7", Specify Wall Thickness  
Hardware for Walls over 4" on 17590-DP and 17590-UR-DP, Specify Wall Thickness

⊖ VARIABLE – DEPENDS ON FIXTURE.  
● STD. PLATE IS 3/16" x 4" x 21-1/2".



4 LBS

## 17590-DP SERIES

## WALL-MOUNT, -DP Double Plate Carrier

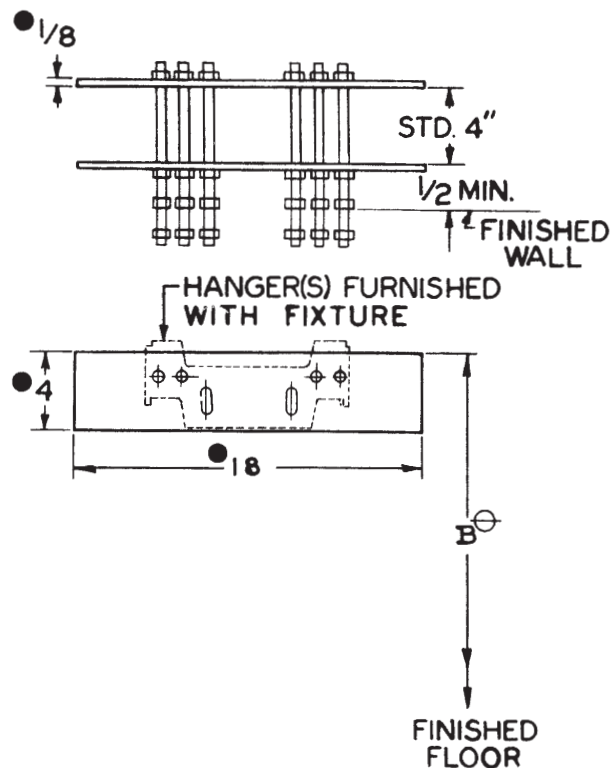
### APPLICATION

For use with lavatories furnished with hangers that require a carrier for support where wall construction will support the fixture and carrier assembly.

### SPECIFICATION

JOSAM 17590-DP Series wall-mounted single Lavatory Carrier with hanger plates and adjustable supporting rods.

⊖ VARIABLE – DEPENDS ON FIXTURE.  
● STD. PLATE IS 3/16" x 4" x 21-1/2".



7 LBS

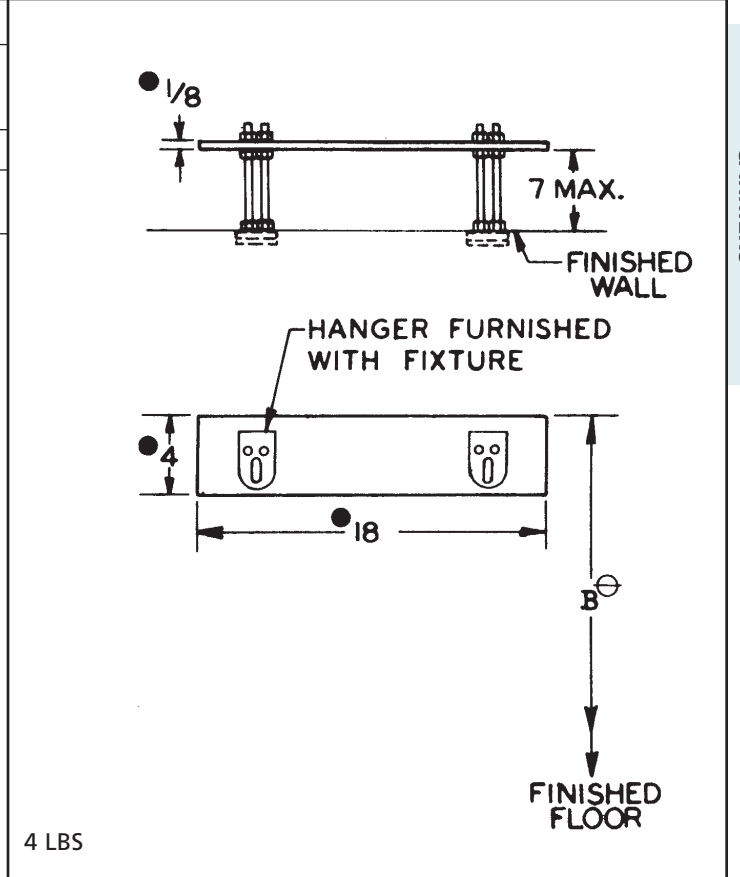
**17590-UR SERIES WALL-MOUNT, -UR Urinal Carrier**

**APPLICATION**

Multipurpose carrier for use with urinals furnished with hangers that require a carrier for support where wall construction will support the fixture and carrier assembly.

**SPECIFICATION**

JOSAM 17590-UR Series wall-mounted single Urinal Carrier with hanger plate and adjustable supporting rods.



⊖ VARIABLE – DEPENDS ON FIXTURE.  
● STD. PLATE IS 3/16" x 4" x 21-1/2".

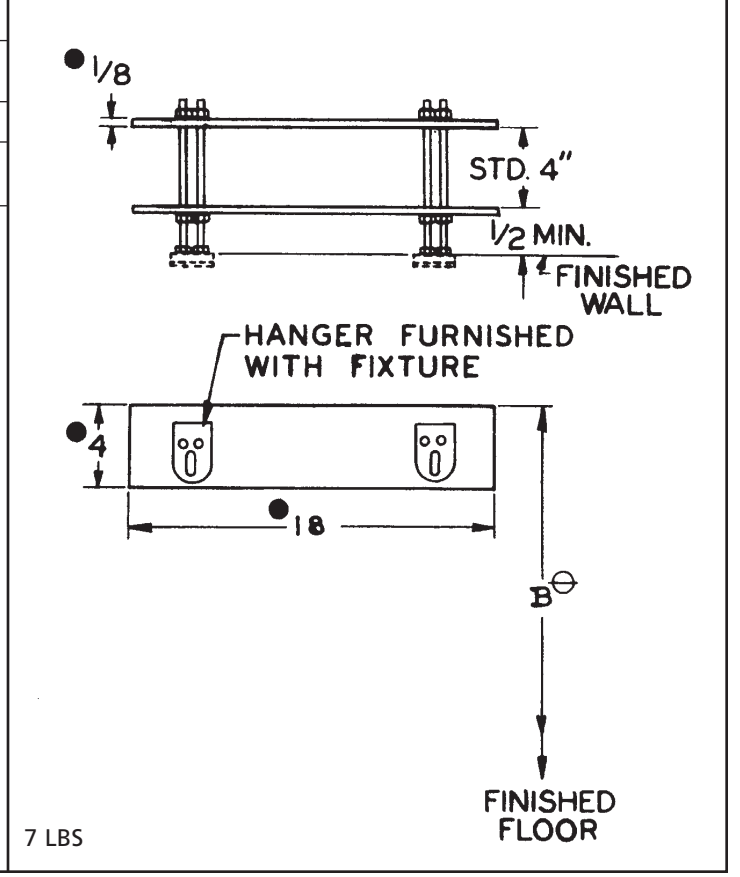
**17590-UR-DP SERIES WALL-MOUNT, -UR Urinal Carrier with -DP Double Plates**

**APPLICATION**

For use with urinals furnished with hangers that require a carrier for support where wall construction will support the fixture and carrier assembly.

**SPECIFICATION**

JOSAM 17590-UR-DP Series wall-mounted single Urinal Carrier with hanger plates and adjustable supporting rods.



⊖ VARIABLE – DEPENDS ON FIXTURE.  
● STD. PLATE IS 3/16" x 4" x 21-1/2".