

17720 SERIES

FLOOR-MOUNT, Heavy-Duty Type

APPLICATION

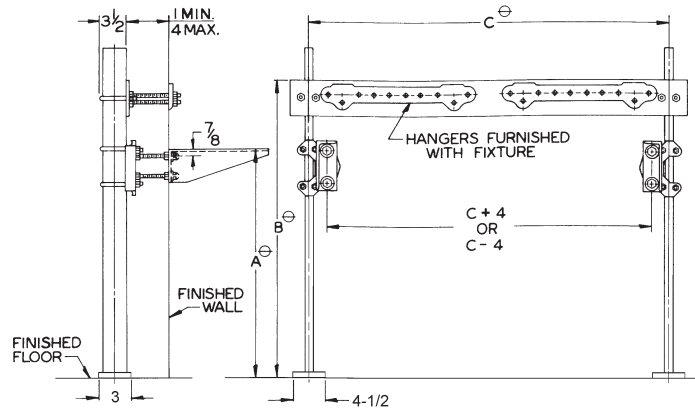
For use with service sinks designed for heavy-duty exposed arms and hanger plate where thin wall construction demands uprights that support the fixture completely independent of the wall.

SPECIFICATION

JOSAM 17720 Series floor-mounted, single, heavy-duty Sink Carrier with hanger plate, adjustable supporting rods, acid-resisting white coated arms, leveling and securing screws, structural uprights, welded feet and chrome-plated trim.

Available Options

- VP Vandal-Proof Trim
- 10 Hardware for Walls over 4", Specify Wall Thickness
- ▼-66 Split Header for Stainless Steel Arms



59 LBS

⊖ VARIABLE – DEPENDS ON FIXTURE.

RECOMMEND ALL FEET BE SECURED TO FLOOR WITH 1/2" BOLTS AND ANCHORS BY OTHERS.

17720-66 SERIES FLOOR-MOUNT, with -66 Split Header for Stainless Steel Arms

APPLICATION

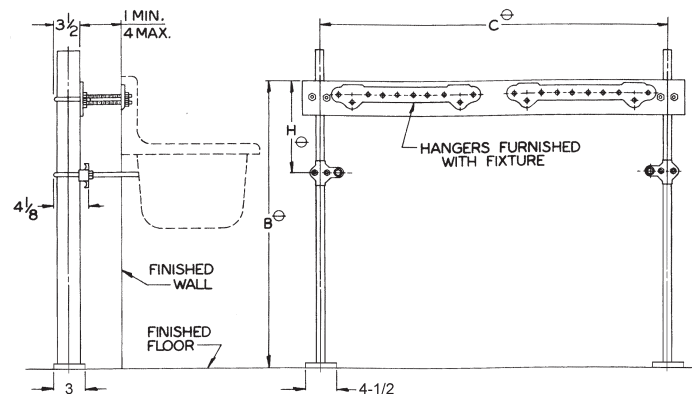
For use with wash-up sinks designed for heavy-duty exposed arms and hanger plate where thin wall construction demands uprights that support the fixture completely independent of the wall.

SPECIFICATION

JOSAM 17720-66 Series floor-mounted, single, heavy-duty Sink Carrier with hanger plate, adjustable supporting rods and bearing studs, structural uprights, welded feet and chrome-plated trim.

OPTION N/A:

- VP



34 LBS

⊖ VARIABLE – DEPENDS ON FIXTURE.

RECOMMEND ALL FEET BE SECURED TO FLOOR WITH 1/2" BOLTS AND ANCHORS BY OTHERS.