

21500-IRMA SERIES LARGE SUMP with Perforated Stainless Steel Extension

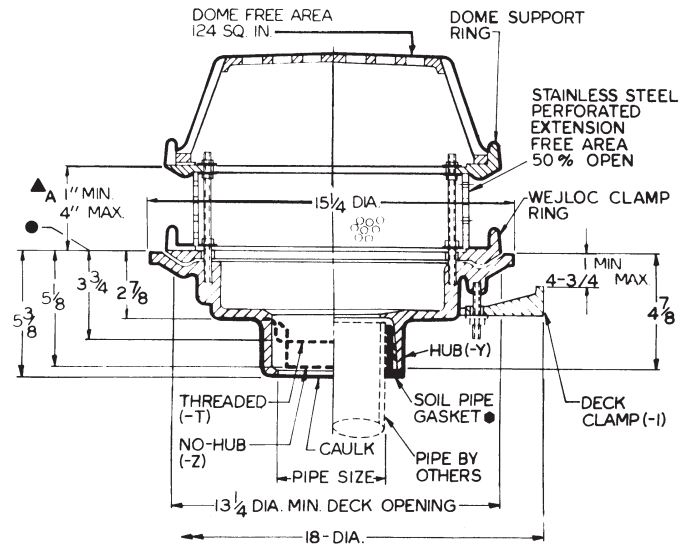
APPLICATION

Used on roof systems where the "Insulated Membrane Assembly," also known as, "Inverted Membrane Assembly" is specified. Insulation is installed on top of the waterproof membrane and gravel ballast is applied over the insulation. Drain is furnished with a perforated stainless steel extension, made to the specified height of the insulation combined with the depth of the ballast. Large slotted dome provides maximum free area for quick drainage of rainwater and protects the drain sump and connected piping from debris. WEJLOC® compression flashing clamp holds the membrane or flashing securely to the drain body.

SPECIFICATION

JOSAM 21500-IRMA Series coated cast iron Roof Drain, large polypropylene locking dome, dome support ring, perforated stainless steel extension filter, WEJLOC® non-puncturing clamp ring and large sump with wide roof flange and bottom outlet.

OPTION N/A:
-4



- CONFORMS WITH ASTM-C564.
- ▲ "A" DIM. SPECIFY ON ORDER.
- THIS DIM. IS 5-3/4" FOR 21508-IRMA-T.

FOR OUTLET TYPE SPECIFY -T, -X, -Y or -Z

TYPE NO.	PIPE SIZE	LBS.	TYPE NO.	PIPE SIZE	LBS.
21502-IRMA	2	39	21506-IRMA	6	43
21503-IRMA	3	40	21508-IRMA	8	45
21504-IRMA	4	41	21509-IRMA-Z	10†	46
21505-IRMA	5	42	†10" AVAILABLE IN NO-HUB ONLY.		

21500-IRMA-6 SERIES LARGE SUMP with -6 Wide Flange & Perforated SS Extension

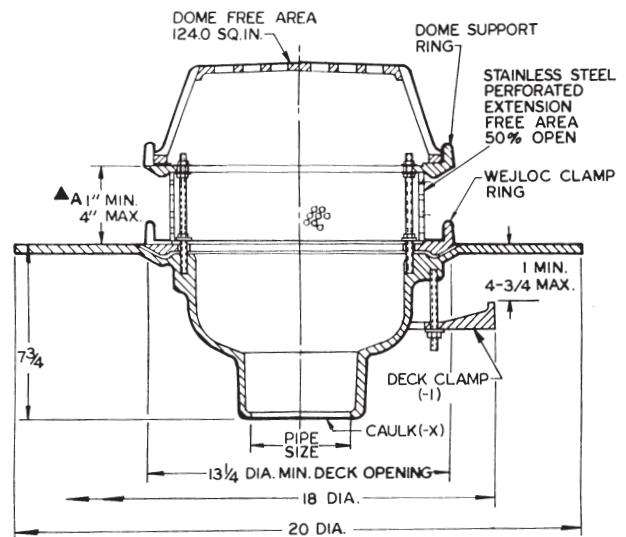
APPLICATION

Used on roof systems where the "Insulated Membrane Assembly," also known as, "Inverted Membrane Assembly" is specified. Insulation is installed on top of the waterproof membrane and gravel ballast is applied over the insulation. Drain is furnished with a perforated stainless steel extension, made to the specified height of the insulation combined with the depth of the ballast. Large slotted dome provides maximum free area for quick drainage of rainwater and protects the drain sump and connected piping from debris. WEJLOC® compression flashing clamp holds the membrane or flashing securely to the drain body. With extra wide deck flange for positive support and large bonding surface for liquid applied membranes.

SPECIFICATION

JOSAM 21500-IRMA-6 Series coated cast iron Roof Drain, large polypropylene locking dome, dome support ring, perforated stainless steel extension filter, WEJLOC® non-puncturing clamp ring and large sump with extra wide roof flange and bottom outlet inside caulk connection.

OPTION N/A:
-4



- ▲ "A" DIM. SPECIFY ON ORDER

FOR OUTLET TYPE SPECIFY -X

TYPE NO.	PIPE SIZE	LBS.	TYPE NO.	PIPE SIZE	LBS.
21502-IRMA-6	2	77	21505-IRMA-6	5	80
21503-IRMA-6	3	78	21506-IRMA-6	6	81
21504-IRMA-6	4	79			