

## 24020 SERIES MEDIUM SUMP, SUPER-FLO® Grate for Composition Deck

### APPLICATION

Used on promenade roof decks where waterproof traffic-bearing elastomeric covering is to be applied. Wide deck flange provides proper area for bonding of composition roof deck covering and distributes the drain's weight over a broad area for positive support. Mid-sized, round medium-duty SUPER-FLO® grate assures rapid drainage and protects drain and connected piping from debris.

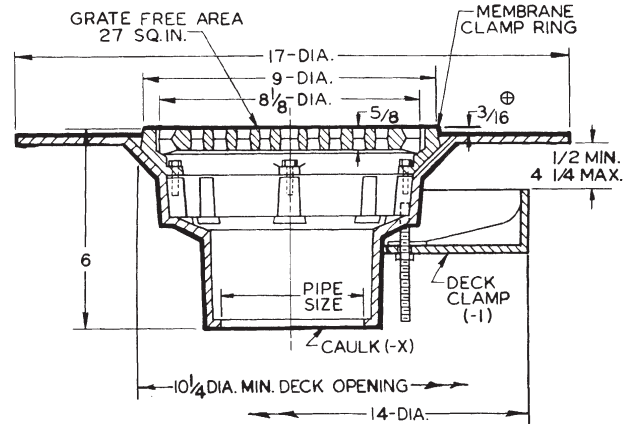
### SPECIFICATION

JOSAM 24020 Series coated cast iron SUPER-FLO® Roof Drain, round medium-duty anti-tilting grate with perimeter drainage slots, set in round, non-puncturing membrane clamp ring and medium sump with 4" wide deck flange and bottom outlet, inside caulk connection.

### Available Options

- |   |                              |
|---|------------------------------|
| -1 Deck Clamp Assembly                      | -38 Less Grate               |
| -20 Galvanized Cast Iron Parts              | -50 Satin Finish Nikaloy Top |
| -29 Sediment Bucket, Cast Iron              | -51 Satin Finish Bronze Top  |
| -29-20 Sediment Bucket, Galvanized          | -VP Vandal-Proof Grate       |
| -31 Chain Anchored Grate                    | <b>OUTLET:</b>               |
| -36 Ductile Iron Grate (Cast Iron Top Only) | -X Inside Caulk Outlet       |

- 24020 SLOT WIDTH 3/8"  
 24020-50 SLOT WIDTH 3/16"  
 24020-51 SLOT WIDTH 3/16"



⊕ ADD 1/4" WHEN FURNISHED WITH NIKALOY OR BRONZE TOP.

FOR OUTLET TYPE SPECIFY -X

TYPE NO.	PIPE SIZE	LBS.
24022	2	28
24023	3	28
24024	4	29

## 24030 SERIES LARGE SUMP, SUPER-FLO® Grate for Composition Deck

### APPLICATION

Used on promenade roof decks where waterproof traffic-bearing elastomeric covering is to be applied. Wide deck flange provides proper area for bonding of composition roof deck covering and distributes the drain's weight over a broad area for positive support. Large diameter, round medium-duty SUPER-FLO® grate assures rapid drainage and protects drain and connected piping from debris. Non-puncturing membrane clamp ensures proper seal between the drain body and the membrane.

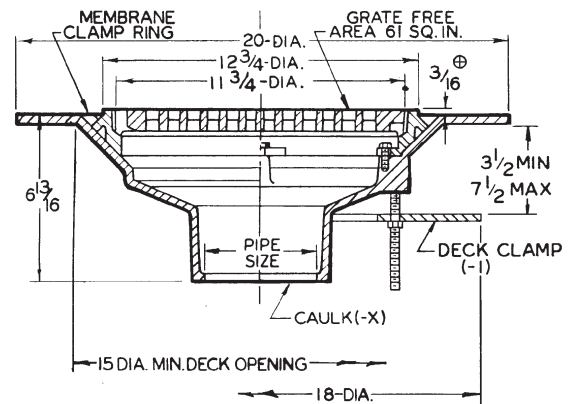
### SPECIFICATION

JOSAM 24030 Series coated cast iron SUPER-FLO® Roof Drain, round medium-duty anti-tilting grate with perimeter drainage slots, set in round, non-puncturing membrane clamp ring and large sump with 4" wide deck flange and bottom outlet, inside caulk connection.

### Available Options

- |   |                              |
|---|------------------------------|
| -1 Deck Clamp Assembly                      | -50 Satin Finish Nikaloy Top |
| -20 Galvanized Cast Iron Parts              | -51 Satin Finish Bronze Top  |
| -29 Sediment Bucket, Cast Iron              | -VP Vandal-Proof Grate       |
| -29 -20 Sediment Bucket, Galvanized         | <b>OUTLET:</b>               |
| -31 Chain Anchored Grate                    | -X Inside Caulk Outlet       |
| -36 Ductile Iron Grate (Cast Iron Top Only) |                              |

- 24030 SLOT WIDTH 9/16"  
 24030-50 SLOT WIDTH 7/16"  
 24030-51 SLOT WIDTH 7/16"



⊕ ADD 1/4" WHEN FURNISHED WITH NIKALOY OR BRONZE TOP.

FOR OUTLET TYPE SPECIFY -X

TYPE NO.	PIPE SIZE	LBS.	TYPE NO.	PIPE SIZE	LBS.
24034	4	38	24036	6	42
24035	5	40	24038	8	45