

24060 SERIES LARGE SUMP, Special-Duty Grate for Composition Deck

APPLICATION

Used in parking garages or docks for heavy traffic, where an elastomeric or liquid applied waterproofing is to be applied beneath a 2" pour of concrete or asphalt. Wide deck flange provides proper area for bonding of composition roof deck covering and distributes the drain's weight over a broad area for positive support. Large diameter, round special-duty SUPER-FLO® Grate assures rapid drainage and sediment bucket protects drain sump and connected piping from debris.

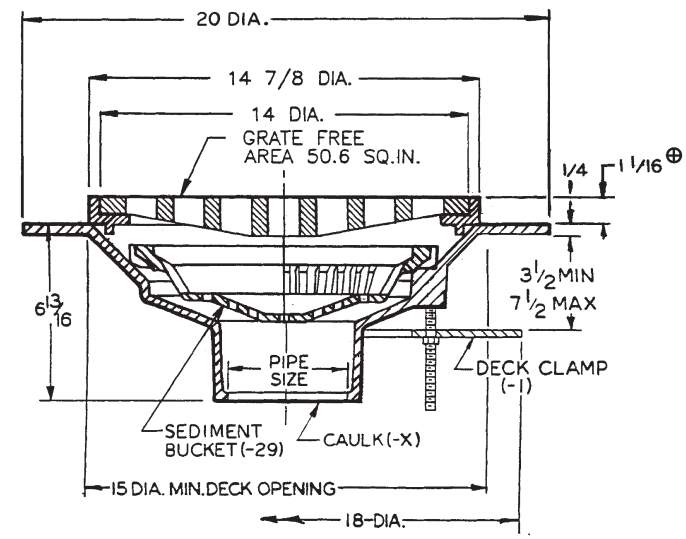
SPECIFICATION

JOSAM 24060 Series coated cast iron Roof Drain, round special-duty grate and large sump with 4" wide deck flange and bottom outlet, inside caulk connection.

Available Options

- 1 Deck Clamp Assembly
- 20 Galvanized Cast Iron Parts
- 29 Sediment Bucket, Cast Iron
- 29-20 Sediment Bucket, Galvanized
- 31 Chain Anchored Grate
- 50 Satin Finish Nikaloy Top
- 51 Satin Finish Bronze Top
- VP Vandal-Proof Grate
- OUTLET:**
- X Inside Caulk Outlet

1-1/16" SQ. HOLES



⊕ ADD 1/4" WHEN FURNISHED WITH NIKALOY OR BRONZE TOP.

FOR OUTLET TYPE SPECIFY -X		
TYPE NO.	PIPE SIZE	LBS.
24064	4	62
24066	6	62
24068	8	63

24200 SERIES LARGE SUMP, Promenade Top & Bonding Flange

APPLICATION

Used on promenade decks, plazas and recreational roof decks where foot traffic or light-weight vehicles will be present and drainage is required from the deck surface and all layers of construction below to the waterproof membrane. Large slotted grate provides ample free area for proper drainage and has narrow openings for pedestrian safety and for the interception of debris. The perforated outer ring serves as a form or retainer to hold the decking concrete, percolation layer aggregates and insulation in place and can be made to the required height. It is perforated for all level drainage. The removable interior stainless steel filter prevents aggregates from entering the drain and can be made to accommodate the thickness of the deck. The body has a deep sump for heavy flow and an extra wide deck flange for positive support and large bonding surface for liquid applied membranes.

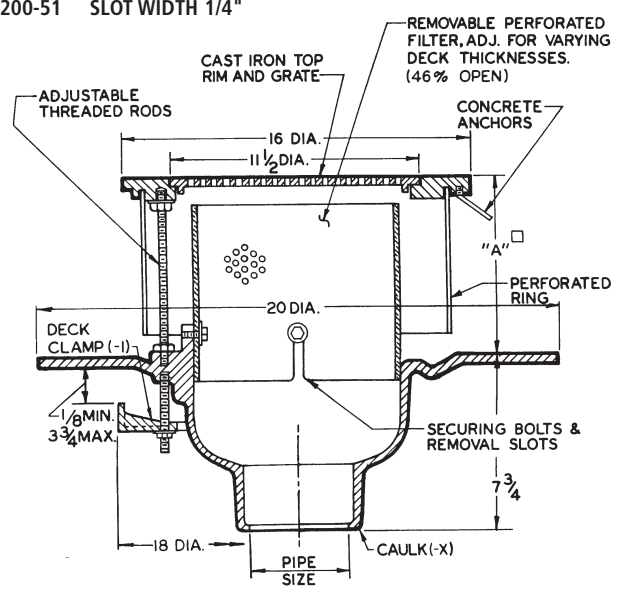
SPECIFICATION

JOSAM 24200 Series coated cast iron adjustable ALL-LEVEL Roof Drain, round pedestrian grate set in round anchored frame leveled on adjustable threaded rods, removable perforated stainless steel filter, concrete forming and retaining ring and large sump with wide flange and bottom outlet inside caulk connection.

Available Options

- 1 Deck Clamp Assembly
- 20 Galvanized Cast Iron Parts
- VP Vandal-Proof Grate
- 50 Satin Finish Nikaloy Top
- 51 Satin Finish Bronze Top
- 60 Square Top, Cast Iron
- 60-50 Square Top, Satin Finish Nikaloy
- 60-51 Square Top, Satin Finish Bronze
- OUTLET:**
- X Inside Caulk Outlet

- 24200 SLOT WIDTH 3/16"
- 24200-50 SLOT WIDTH 1/4"
- 24200-51 SLOT WIDTH 1/4"



□ "A" DIM. TO BE SPECIFIED ON ORDER. STD. 3" MAX. 12"
GRATE FREE AREA - 30.2 SQ. IN.

FOR OUTLET TYPE SPECIFY -X					
TYPE NO.	PIPE SIZE	LBS.	TYPE NO.	PIPE SIZE	LBS.
24202	2	53	24205	5	56
24203	3	54	24206	6	57
24204	4	55			