

24700 SERIES

PARAPET TYPE, Sloping Grate

APPLICATION

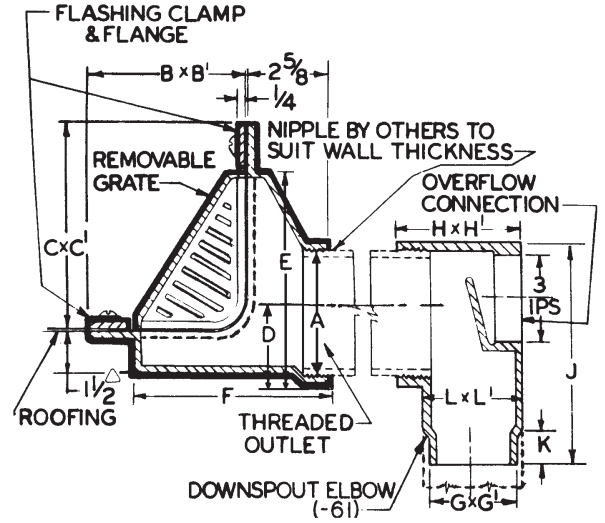
Used at the junction of the roof and the parapet where perimeter or emergency roof drainage through a threaded side outlet is required. Sloping grate provides ample drainage and is slotted to prevent entrance of debris. Flashing and membrane are positively secured to the drain body with a compression clamp.

SPECIFICATION

JOSAM 24700 Series coated cast iron Roof Drain, parapet type, removable sloping bronze grate, flashing clamp, shallow sump with flashing flange and side outlet threaded connection.

Available Options

- ▼-45 Body with 45 Degree Threaded Outlet
- 20 Galv. Cast Iron Parts
- 22 Cast Iron Grate
- 24 Rough Nikaloy Grate
- 50 Satin Finish Nikaloy Grate
- 51 Satin Finish Bronze Grate
- 61 Downspout Elbow, Cast Iron
- 61-20 Downspout Elbow, Galvanized



△ DIM. 7/8" ON 2"-4" SIZES

FOR OUTLET TYPE SPECIFY -T

TYPE NO.	A	GRATE FREE AREA SQ. IN.	BxB1	CxC1	D	E	F	GxG1	HxH1	J	K	LxL1	LBS.
24702	2	19.5	4-1/2x11	6-1/2x11	1-1/2	6-3/8	5-5/8	3x5-1/8	4-1/8x5-1/4	7-3/8	1-1/4	3-1/4x5-1/4	22
24703	3	19.5	4-1/2x11	6-1/2x11	2-1/8	6-3/8	5-5/8	3x5-1/8	4-1/8x5-1/4	7-3/8	1-1/4	3-1/4x5-1/4	22
24704	4	19.5	4-1/2x11	6-1/2x11	2-5/8	6-3/8	5-5/8	3x5-1/8	4-1/8x5-1/4	7-3/8	1-1/4	3-1/4x5-1/4	22
24705	5	34.3	5-1/2x13	7-1/2x13	3-1/2	8-1/8	6-5/8	4x6-1/8	5x7-1/2	10-3/4	1-3/4	4-1/4x7-1/2	28
24706	6	34.3	5-1/2x13	7-1/2x13	3-1/2	8-1/8	6-5/8	4x6-1/8	5x7-1/2	10-3/4	1-3/4	4-1/4x7-1/2	28

24700-45 SERIES

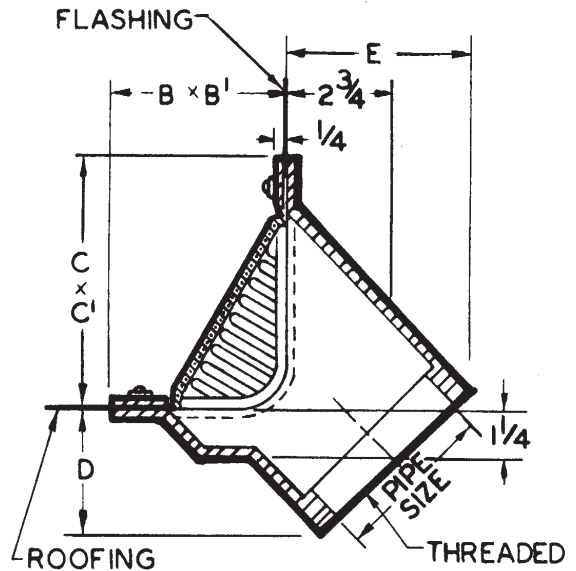
PARAPET TYPE, Sloping Grate, 45° Outlet

APPLICATION

Used at the junction of the roof and the parapet where perimeter or emergency roof drainage through a threaded 45° outlet is required. Sloping grate provides ample drainage and is slotted to prevent entrance of debris. Flashing and membrane are positively secured to the drain body with a compression clamp.

SPECIFICATION

JOSAM 24700-45 Series coated cast iron Roof Drain, parapet type, removable sloping bronze grate, flashing clamp and shallow sump with flashing flange and 45° side outlet threaded connection.



FOR OUTLET TYPE, SPECIFY -T.

TYPE NO.	PIPE SIZE	GRATE FREE AREA SQ. IN.	BxB1	CxC1	D	E	LBS.
24702-45	2	19.5	4-1/2X11	6-1/2X11	2-1/4	3-7/8	24
24703-45	3	19.5	4-1/2X11	6-1/2X11	2-5/8	4-1/4	25
24704-45	4	19.5	4-1/2X11	6-1/2X11	3	4-5/8	26
24705-45	5	34.3	5-1/2X13	7-1/2X13	3-1/2	5	30
24706-45	6	34.3	5-1/2X13	7-1/2X13	3-5/8	5-1/2	32