

26200 SERIES

EXPANSION JOINT

APPLICATION

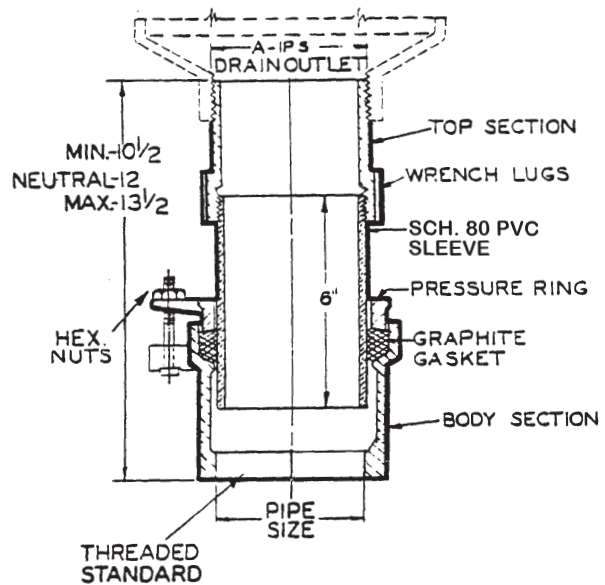
Used with all types of vertical drainage conductors, leaders, stacks, vent or soil lines, where contraction and expansion movements must be compensated for to prevent rupturing of lines and damage to the building construction.

SPECIFICATION

JOSAM 26200 Series coated cast iron Expansion Joint, schedule 80 PVC sleeve, packing gland with bolted pressure ring, male inlet and female outlet threaded connection.

Available Options

-20 Galvanized Cast Iron Parts



TYPE NO.	PIPE SIZE	LBS.	TYPE NO.	PIPE SIZE	LBS.
26202	2	9	26206	6	20
26203	3	11	26208	8	37
26204	4	12	26209	10	70
26205	5	16			

26440 SERIES

STACK FLASHING FITTING

APPLICATION

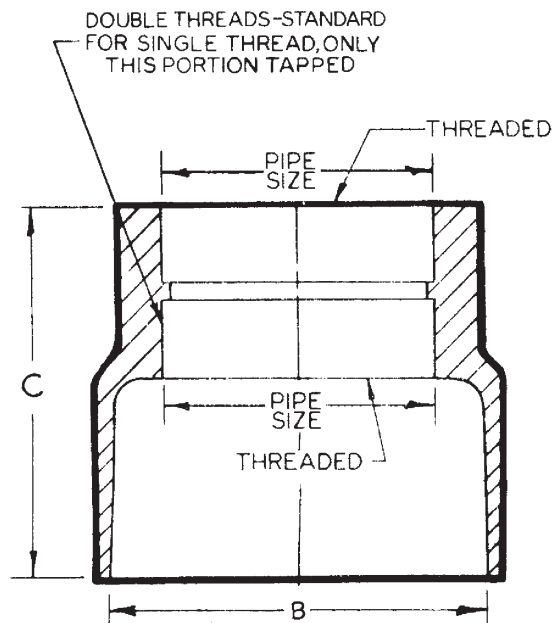
Used as a counterflashing sleeve where the roofing membranes are terminated at the stack, which passes through the roof. Sleeve is threaded so that the stack may be extended to the desired elevation.

SPECIFICATION

JOSAM 26440 Series coated cast iron Stack Fitting with counterflashing recess, threaded stack and extension connections.

Available Options

-20 Galvanized Cast Iron Parts
Single Thread Can Be Furnished When Specified on Order.



TYPE NO.	PIPE SIZE	B	C	LBS.
26441-1/2	1-1/2	3-1/4	5-3/8	4
26442	2	3-1/4	5-3/8	3
26443	3	4-1/4	5-3/8	4
26444	4	5-1/2	5-3/8	6
26445	5	6-1/2	5-3/8	10
26446	6	7-1/2	5-3/8	10