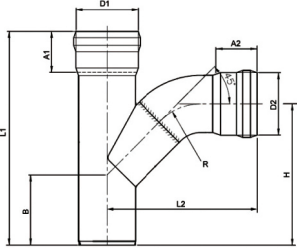
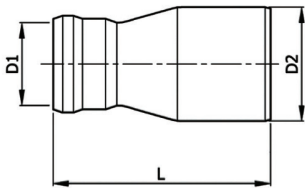


PUSH-FIT COMBINATION WYE AND 1/8 BEND



SERIES NUMBER	PIPE SIZE NOM.	D1 PIPE O.D.	D2 PIPE O.D.	A1 - MIN INSERT DEPTH	A2 - MIN INSERT DEPTH	L1	L2	H	B	WT LBS
JF-1698	2"X2"	2.1 (53)	2.1 (53)	1.5 (38)	1.5 (38)	7.8 (198)	5.5 (140)	5.2 (131)	2.6 (65)	1.0
JF-1700	3"X2"	2.9 (73)	2.1 (53)	2.2 (55)	1.5 (38)	9.1 (230)	5.9 (150)	5.9 (151)	3.0 (75)	1.5
JF-1702	3"X3"	2.9 (73)	2.9 (73)	2.2 (55)	2.2 (55)	10.0 (255)	7.4 (187)	6.9 (174)	3.3 (85)	2.1
JF-1704	4"X2"	4.0 (102)	2.1 (53)	2.8 (70)	1.5 (38)	10.6 (270)	6.5 (165)	6.5 (166)	3.0 (75)	2.2
JF-1706	4"X3"	4.0 (102)	2.9 (73)	2.8 (70)	2.2 (55)	11.8 (300)	8.0 (202)	7.6 (194)	3.5 (90)	2.9
JF-1708	4"X4"	4.0 (102)	4.0 (102)	2.8 (70)	2.8 (70)	13.2 (335)	9.5 (242)	9.1 (232)	4.3 (110)	3.7
JF-1722	6"X4"	6.3 (159)	4.0 (102)	3.1 (80)	2.8 (70)	14.6 (370)	10.7 (271)	9.4 (240)	3.5 (89)	6.6
JF-1726	6"X6"	6.3 (159)	6.3 (159)	3.1 (80)	3.1 (80)	18.1 (460)	13.7 (347)	13.0 (329)	5.5 (140)	9.2

PUSH-FIT CONCENTRIC METRIC ADAPTER



SERIES NUMBER	PIPE SIZE MM X MM	D1 PIPE O.D.	D2 PIPE O.D.	L	WT LBS
JF-2003	53X50	53	50	98	.28
JF-2004	50X53	50	53	96	.29
JF-2005	73X75	73	75	137	.65
JF-2006	75X73	75	73	137	.64
JF-2007	102X110	102	110	190	1.1
JF-2008	159X160	159	160	210	2.6
JF-2009	219X200	219	200	300	5.3
JF-2010	219X250	219	250	315	5.3