

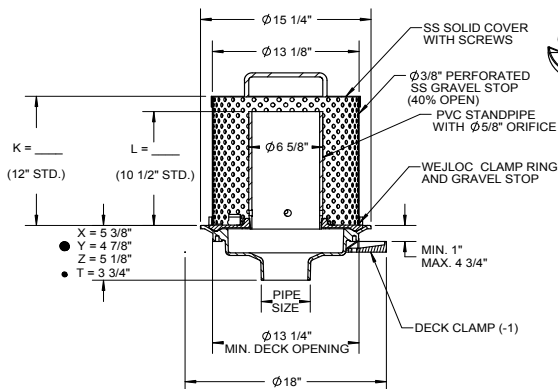
SPECIFICATION:

JOSAM SERIES 21500-ORDG1 COATED CAST IRON DRAIN BODY AND CLAMP RING WITH STAINLESS STEEL GRAVEL STOP AND SECURED COVER AND PVC STANDPIPE WITH ORIFICE

**ROOF DRAIN
GREEN ROOF**

SERIES **21500-ORDG1**

- THIS DIMENSION IS 5-3/4" FOR 21500-T
- GASKET ON -Y CONNECTION CONFORMS WITH ASTM-C654



				-AE	THREADED LEVELIZE ADJ. EXT.
	2"	PIPE SIZE		-AER	ADJ. EXT. USING THREADED RODS
	3"	PIPE SIZE		-PC	PERFORATED COVER
	4"	PIPE SIZE		-LO	LESS ORIFICE IN STANDPIPE
	5"	PIPE SIZE		-1	DECK CLAMP ASSY.
	6"	PIPE SIZE		-2	DRAIN RECEIVER
	8"	PIPE SIZE		-3	DECK CLAMP ASSY. AND DRAIN RECEIVER
	10"	PIPE SIZE (NO-HUB ONLY)		-3C	DRAIN RECEIVER AND DRAIN RECEIVER CLIPS
				-4	SECONDARY FLASHING CLAMP (-AE ONLY)
	-X	INSIDE CAULK OUTLET		-6	EXTRA WIDE FLANGE DRAIN BODY (-X OUTLET ONLY)
	-Y	HUB OUTLET W/GASKET (2", 3" & 4" SIZES ONLY)		-10	FIXED EXT. COLLAR, CAST IRON (SPECIFY HT. OR 4" STD.)
	-Z	NO-HUB SPIGOT OUTLET		-10-20	FIXED EXT. COLLAR, GALV. (SPECIFY HT. OR 4" STD.)
	-1	THREADED OUTLET		-17"	2" HIGH SOLID CLAMPING COLLAR
				-20	GALV. CAST IRON PARTS
	-22	CAST IRON DOME		-66	NO-HUB SIDE OUTLET (2" THRU 6" OUTLETS ONLY)

DATE OF LAST CHANGE: 05/04/15

DIMENSIONS ARE SUBJECT TO MANUFACTURERS TOLERANCES AND CHANGE WITHOUT NOTICE. WE CAN ASSUME NO RESPONSIBILITY FOR USE OF SUPERSEDED OR VOID DATA.

JOSAM COMPANY
MICHIGAN CITY, INDIANA

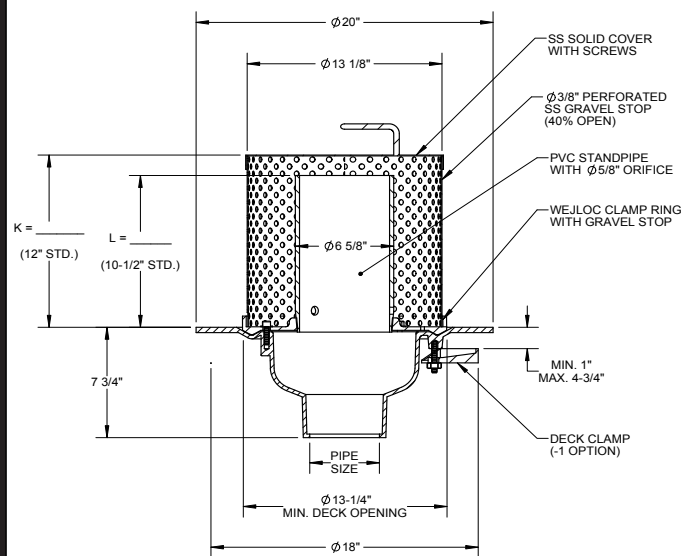
NOTES

SPECIFICATION:

JOSAM SERIES 21500-ORDG1-6 COATED CAST IRON LARGE SUMP WIDE FLANGE DRAIN BODY AND CLAMP RING WITH STAINLESS STEEL GRAVEL STOP AND SECURED COVER AND PVC STANDPIPE WITH ORIFICE.

**ROOF DRAIN
GREEN ROOF**

SERIES **21500-ORDG1-6**



				-AE	ADJUSTABLE EXTENSION
				-PC	PERFORATED COVER
				-LO	LESS ORIFICE IN STANDPIPE
	2"	PIPE SIZE		-1	DECK CLAMP ASSY.
	3"	PIPE SIZE	X	-6	EXTRA WIDE FLANGE DRAIN BODY (-X OUTLET ONLY)
	4"	PIPE SIZE		-10	FIXED EXT. COLLAR, CAST IRON (SPECIFY HT. OR 4" STD.)
	5"	PIPE SIZE		-10-20	FIXED EXT. COLLAR, GALV. (SPECIFY HT. OR 4" STD.)
	6"	PIPE SIZE		-17"	2" HIGH SOLID CLAMPING COLLAR
				-20	GALV. CAST IRON PARTS
	-X	INSIDE CAULK OUTLET		-66	NO-HUB SIDE OUTLET (2" THRU 6" OUTLETS ONLY)

DATE OF LAST CHANGE: 03/25/14

DIMENSIONS ARE SUBJECT TO MANUFACTURERS TOLERANCES AND CHANGE WITHOUT NOTICE. WE CAN ASSUME NO RESPONSIBILITY FOR USE OF SUPERSEDED OR VOID DATA.

JOSAM COMPANY
MICHIGAN CITY, INDIANA

NOTES

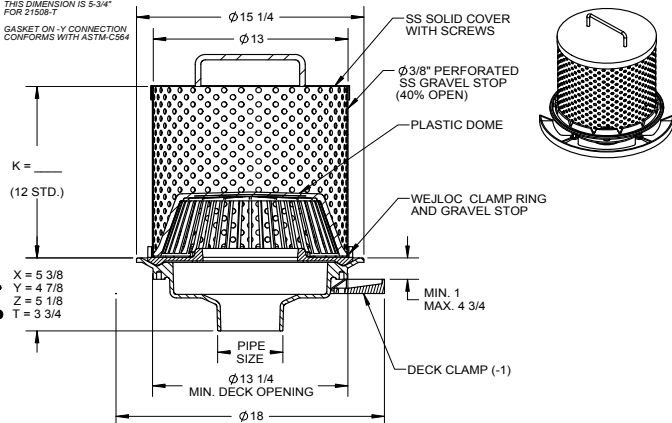
SPECIFICATION:

JOSAM SERIES 21500-RDG3 COATED CAST IRON DRAIN BODY AND WEJLOC® CLAMP RING WITH STAINLESS STEEL GRAVEL STOP, SECURED COVER AND PLASTIC DOME.

**ROOF DRAIN
GREEN ROOF**

SERIES **21500-RDG3**

- THIS DIMENSION IS 5-3/4" FOR 21500-T
- GASKET ON -Y CONNECTION CONFORMS WITH ASTM-C654



2"	PIPE SIZE	-AE	THREADED LEVEZE	ADJ. EXT.
3"	PIPE SIZE	-AER	ADJ. EXT. USING THREADED RODS	
4"	PIPE SIZE	-PC	PERFORATED COVER	
5"	PIPE SIZE	-1	DECK CLAMP ASY.	
6"	PIPE SIZE	-2	DRAIN RECEIVER	
8"	PIPE SIZE	-3	DECK CLAMP ASY. AND DRAIN RECEIVER	
10"	PIPE SIZE (NO-HUB ONLY)	-3C	DRAIN RECEIVER AND DRAIN RECEIVER CLIPS	
-T	THREADED OUTLET	-4	SECONDARY FLASHING CLAMP (-AE ONLY)	
-X	INSIDE CAULK OUTLET	-6	EXTRA WIDE FLANGE DRAIN BODY (-X OUTLET ONLY)	
-Y	HUB OUTLET W/GASKET (2", 3" & 4" SIZES ONLY)	-10	FIXED EXT. COLLAR, CAST IRON (SPECIFY HT. 4" STD.)	
-Z	NO-HUB SPIGOT OUTLET	-10-20	FIXED EXT. COLLAR, GALV. (SPECIFY HT. 4" STD.)	
-21	GALV. CAST IRON DOME ONLY			
-22	CAST IRON DOME			
-23	ROUGH BRONZE DOME			
-26	ALUMINUM DOME	-20	GALV. CAST IRON PARTS	
-33	STAINLESS MECH SCREEN-COVERED DOME	-66	NO-HUB SIDE OUTLET (2" THRU 6" OUTLETS ONLY)	
-VP	VANDAL-PROOF DOME			

DATE OF LAST CHANGE: 5/04/15

DIMENSIONS ARE SUBJECT TO MANUFACTURERS TOLERANCES AND CHANGE WITHOUT NOTICE. WE CAN ASSUME NO RESPONSIBILITY FOR USE OF SUPERSEDED OR VOID DATA.

JOSAM COMPANY
MICHIGAN CITY, INDIANA

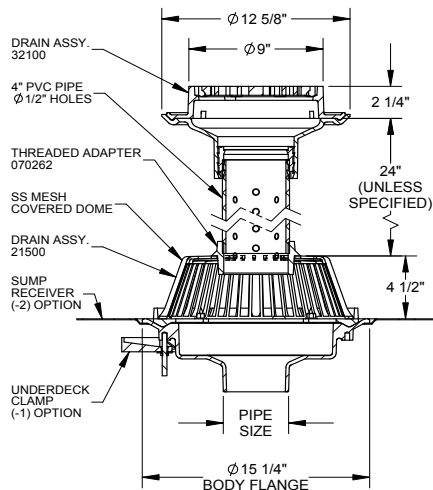
NOTES

SPECIFICATION:

JOSAM SERIES 21500-Q602 COATED CAST IRON LOWER DRAIN AND WEJLOC CLAMP RING WITH SS MESH COVERED CAST IRON DOME, MODIFIED FOR THREADED PVC STANDPIPE. TOP SECTION IS 32100 FLOOR DRAIN.

**ROOF DRAIN
PLANTING AREA**

SERIES **21500-Q602**



-1	UNDERDECK CLAMP
-2	DRAIN RECEIVER (24" SQ.)
-VP	VANDALPROOF DOME
-X	CAULK OUTLET
-Y	PUSH-ON OUTLET
-T	THREADED OUTLET
-Z	NO-HUB OUTLET

	PIPE SIZE
	2"
	3"
	4"
	5"
	6"
	8"

DATE OF LAST CHANGE: 05/04/15

DIMENSIONS ARE SUBJECT TO MANUFACTURERS TOLERANCES AND CHANGE WITHOUT NOTICE. WE CAN ASSUME NO RESPONSIBILITY FOR USE OF SUPERSEDED OR VOID DATA.

JOSAM COMPANY
MICHIGAN CITY, INDIANA

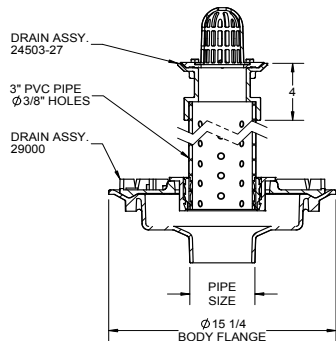
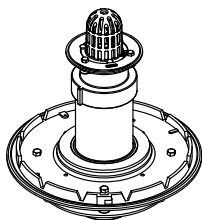
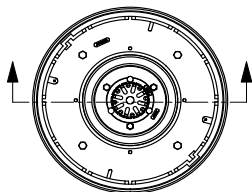
NOTES

SPECIFICATION:

JOSAM SERIES 21500-Q606 COATED CAST IRON LOWER DRAIN AND WEJLOC CLAMP RING. COATED CAST IRON THREADED OUTLET UPPER BODY WITH BRONZE CLAMP RING AND DOME.

**ROOF DRAIN
PLANTING AREA**

SERIES **21500-Q606**



-1	UNDERDECK CLAMP
-2	DRAIN RECEIVER (24" SQ.)
-VP	VANDALPROOF DOME
-X	CAULK OUTLET
-Y	PUSH-ON OUTLET
-T	THREADED OUTLET
-Z	NO-HUB OUTLET

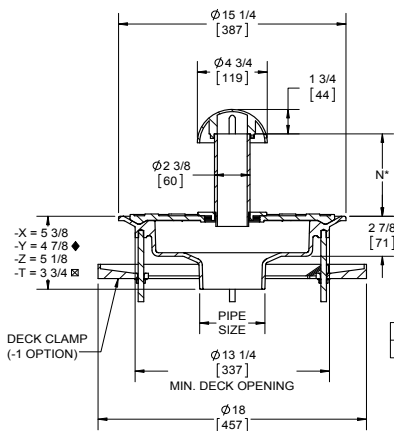
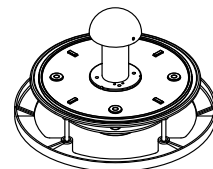
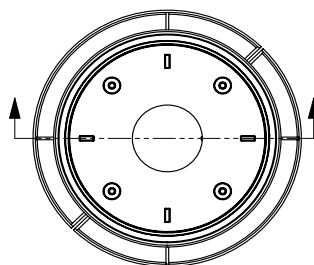
PIPE SIZE
2"
3"
4"
5"
6"
8"

SPECIFICATION:

JOSAM 21500-Q515 SERIES CAST IRON DRAIN WITH BOTTOM OUTLET, WEJLOC NON-PUNCTURING CLAMP RING, PVC STANDPIPE, AND BRASS DOME.

**DRAIN
WITH STANDPIPE**

SERIES **21500-Q515**



OUTLET TYPE	
-X	INSIDE CAULK
-Y	HUB WITH GASKET (2"-4")
-Z	NO-HUB
-T	THREADED

PIPE SIZE
2"
3"
4"
5"
6"
8"
10"

-24	LESS DOME
-PF	PERFORATED STANDPIPE

* SPECIFY "N" AT TIME OF ORDER
 ♦ GASKET CONFORMS WITH ASTM-C564
 Ⓢ THIS DIM. 5 3/4" FOR 21508-T
 SEE 21500 DRAWING FOR MORE BODY DIMS.

DATE OF LAST CHANGE: 4/24/15

DIMENSIONS ARE SUBJECT TO MANUFACTURERS
 TOLERANCES AND CHANGE WITHOUT NOTICE.
 WE CAN ASSUME NO RESPONSIBILITY FOR
 USE OF SUPERSEDED OR VOID DATA.

JOSAM COMPANY
 MICHIGAN CITY, INDIANA

NOTES

DATE OF LAST CHANGE: 04/27/15

DIMENSIONS ARE SUBJECT TO MANUFACTURERS
 TOLERANCES AND CHANGE WITHOUT NOTICE.
 WE CAN ASSUME NO RESPONSIBILITY FOR
 USE OF SUPERSEDED OR VOID DATA.

JOSAM COMPANY
 MICHIGAN CITY, INDIANA

NOTES

⚠ WARNING: Cancer and Reproductive Harm - www.p65warnings.ca.gov