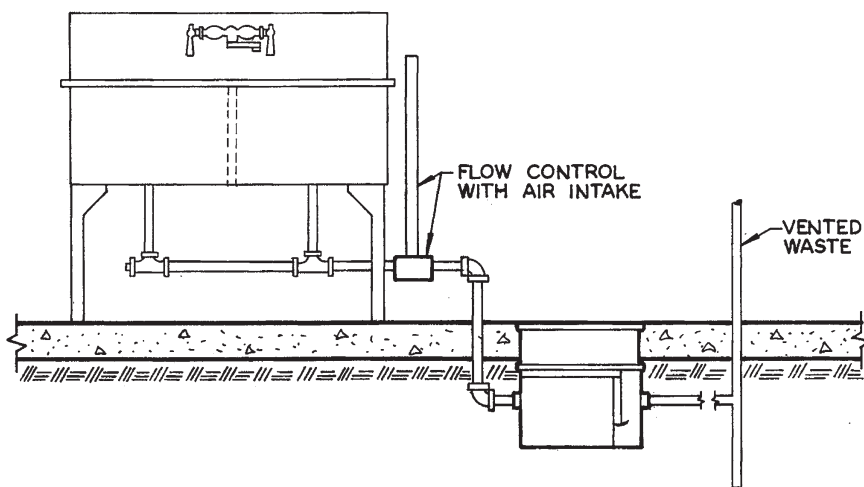
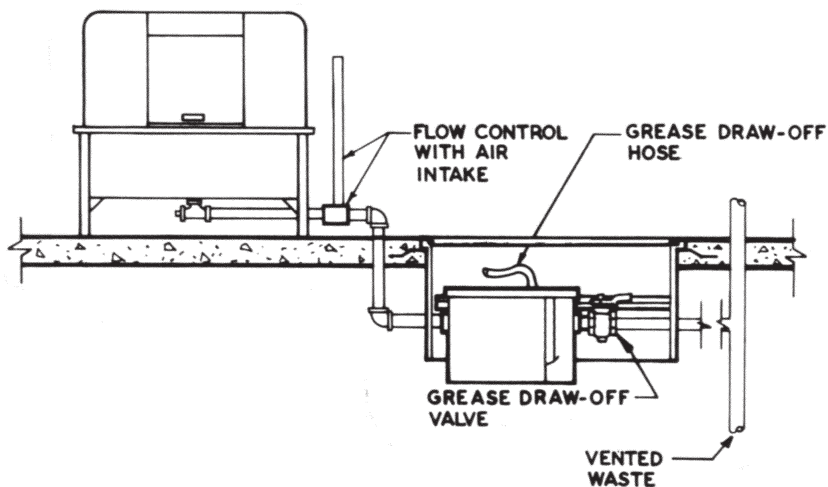


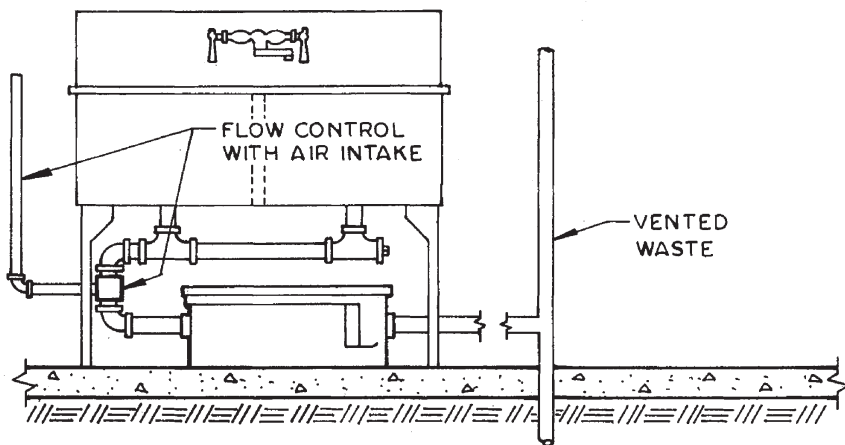
60100H-GRD Series Interceptor on floor, servicing a sink, shown installed with an optional -GRD Grease Removal Device.



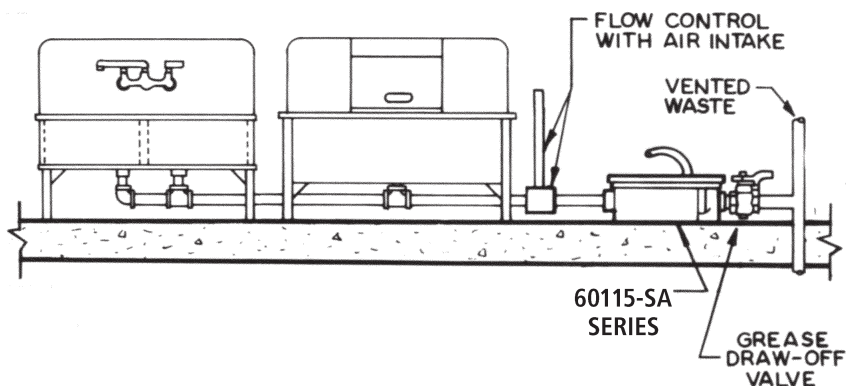
60100H-EXT Series Interceptor recessed with deep roughing extended flush with floor.



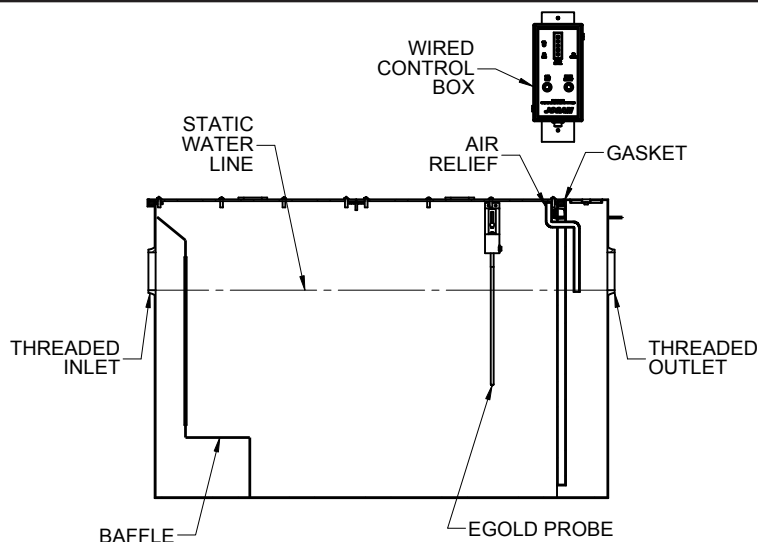
60100-SA-RT Series Semi-Automatic Interceptor recessed flush with floor, servicing a dishwasher.



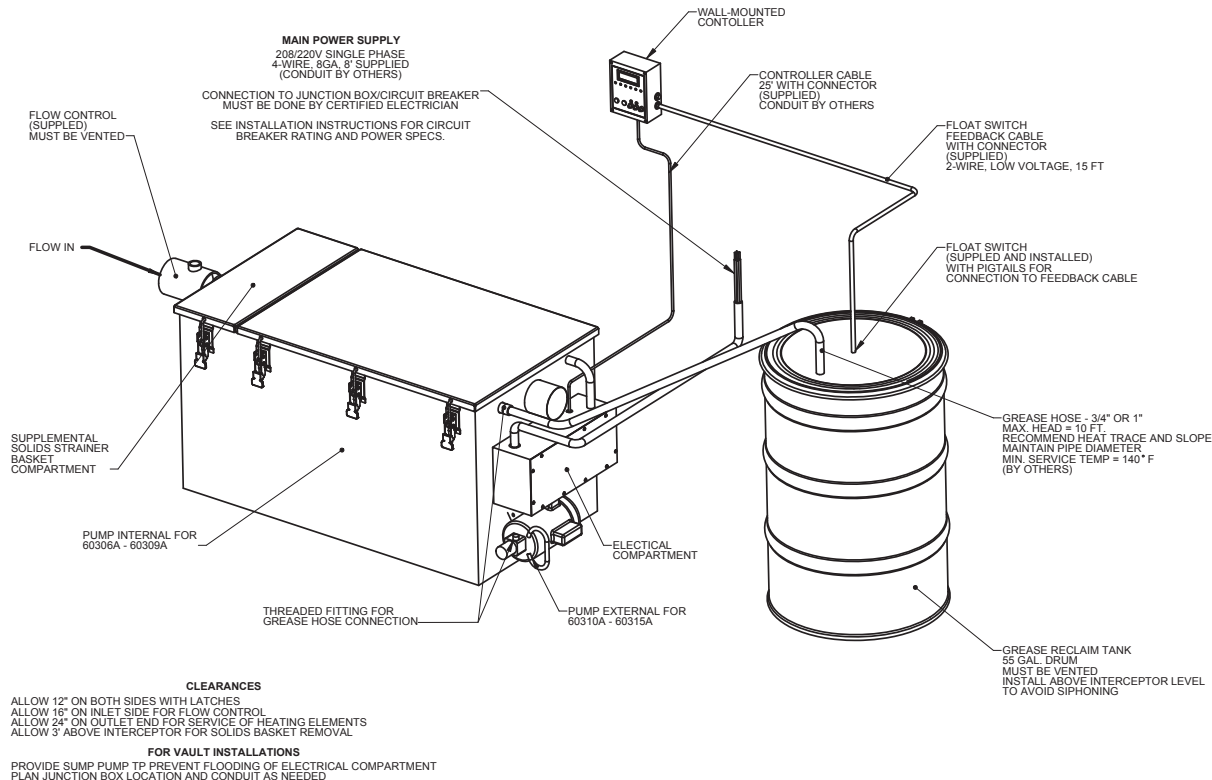
60115A Series Interceptor installed on floor under sink.  
(Recommended only if there is adequate head room for cover removal and service.)



60115-SA Series Semi-Automatic shallow Interceptor installed on floor, servicing a double compartment sink and dishwasher.



60210A-EGOLD Series Interceptor with factory installed Josam EGOLD-1000 Electronic Grease/Oil Level Detector for installation in high volume applications such as hotels, hospitals and schools.



**INSTALLATION**  
**60300 Series, GI 2000A**  
**Automatic Grease Recovery Device**

**! WARNING: Cancer and Reproductive Harm - [www.p65warnings.ca.gov](http://www.p65warnings.ca.gov)**

## FLOW CONTROLS • ESSENTIAL FOR MAXIMUM EFFICIENCY

Flow control fittings are furnished at no extra cost with all JOSAM Interceptors and Separators. These devices govern flow rate to the interceptor or separator being used, thereby assuring the maximum retention of the material being intercepted.

The appropriate flow control will be shipped with every JOSAM Grease Interceptor or Oil Separator. They were designed after many years of tests and field experiments with interceptor installations under varying conditions and ensure 90% or more grease or oil retention efficiency of the interceptor.

When consideration isn't given to the flow rate of the waste water to be handled, generally the actual flow rate through the interceptor or separator exceeds its rated maximum. With such flow rate, the interceptor or separator would be overloaded. Retention time within the unit would not be sufficient for maximum separation. The result would be low efficiency and pollutants left in the waste water would pass through the interceptor or separator making the installation less than effective. When the flow is controlled by use of a JOSAM flow control fitting so that it can never exceed the maximum rating of the interceptor or separator, and the unit is cleaned on a regular basis, the maximum pollutant retention efficiency will be achieved and maintained.

All flow controls are provided with an air intake and should be connected to vent stack or vent not lower than the flow level of highest drain serviced or terminated in a return bend at the same elevation outside of building.

This table indicates which series flow control is furnished with the JOSAM interceptors or separators shown.

FLOW CONTROLS					
Series	Flow Control Series	Series	Flow Control Series	Series	Flow Control Series
60100-SA	60730	60110A	60730	60210A*	60710
60110-SA	60730	60100H-EXT	60740	60500B	60740
60100-SA-RT	60730	60100H-RT	60740	60500B-EXT	60740
60100-SA-ET	60730	60100H-ET	60740	60610-EXT*	60710
60100H	60740	60210A-EXT*	60710	60610A*	60710

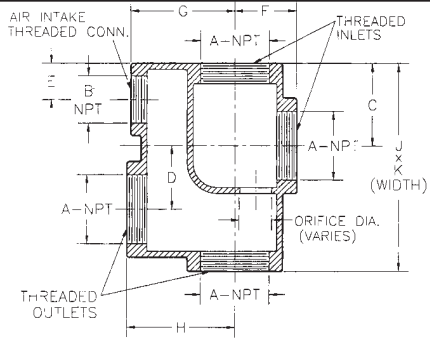
\* All interceptors or separators in this series with a flow rate of 150 G.P.M. or less are shipped with a 60733 & 60734 Type Flow Control.

DIMENSIONS IN INCHES											
Type	A	B	C	D	E	F	G	H	J	K	LBS.
60712	2	1-1/4	2-1/2	2	1-1/8	2	3-1/4	3-3/8	6-1/2	3	7
60713	3	1-1/2	3	2-7/8	1-3/8	2-3/4	4-1/8	4-1/2	8-5/8	4-1/4	14
60714	4	2-1/2	3-3/4	4-1/8	1-7/8	4-1/4	6-1/2	6-7/8	12	6-7/8	52
60715	5	2-1/2	3-3/4	4-1/8	1-7/8	4-1/4	6-1/2	6-7/8	12	6-7/8	54
60716	6	3	4-3/8	5-1/8	2-1/8	4-3/4	7-7/8	8	14-1/4	8	85

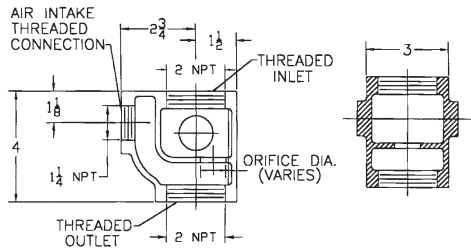
## TYPES OF FLOW CONTROLS

### 60710 TYPE

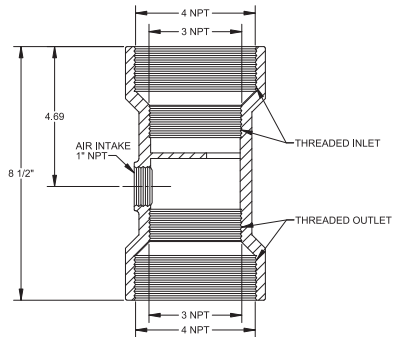
Two Bronze Plugs Furnished for unused Inlet & Outlet to serve as Cleanouts



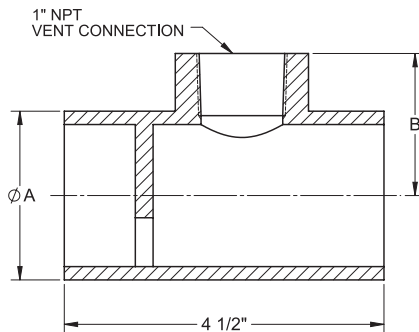
### 60732 TYPE



### 60733 & 60734 TYPE



### 60742 & 60743 TYPE



	A	B
60742	2-3/8	2
60743	3-3/8	2-1/2

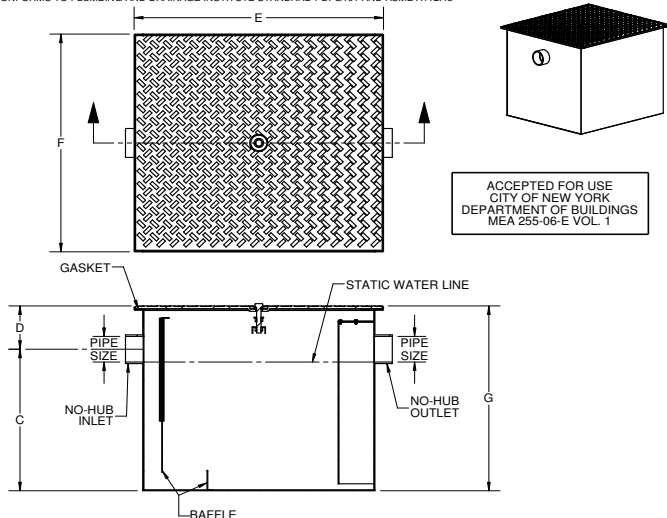
**SPECIFICATION:**

JOSAM 60100H SERIES ACID-RESISTING EPOXY COATED FABRICATED STEEL GREASE INTERCEPTOR, NO-HUB CONNECTIONS, INTERNAL TRAP, REMOVABLE BAFFLE, GASKETED NON-SKID COVER AND FLOW CONTROL FITTING.

**GREASE INTERCEPTOR  
MANUAL TYPE**

SERIES **60100H**

CONFORMS TO PLUMBING AND DRAINAGE INSTITUTE STANDARD PDI-G101 AND ASME A112.43



ACCEPTED FOR USE  
CITY OF NEW YORK  
DEPARTMENT OF BUILDINGS  
MEA 255-06-E VOL. 1

Δ	LEGEND	GREASE/OIL LEVEL DETECTOR (15-100GPM SIZES)	TYPE	FLOW (GPM)	CAP. (LBS.)	PIPE SIZE	C	D	E	F	G
Δ	-SS	STAINLESS STEEL INTERCEPTOR	60102H	7	14	2	8-1/4	3-3/8	14-7/8	13	11-5/8
Δ	-GD	GREASE REMOVAL DEVICE (TIMER)	60103H	10	20	2	8-1/2	3-3/8	16-5/8	14-1/2	11-7/8
Δ	-40	COVER RECESS FOR FLOOR FINISH	60104H	15	30	2	9-1/2	3-3/8	20-3/8	17	12-7/8
Δ	-61	FLANGE AND CLAMP DEVICE	60105H	20	40	3	12	4-7/8	20-7/8	19	16-7/8
Δ	-85	ENZYMATIC PORT IN COVER	60106H	25	50	3	13	4-7/8	23-3/8	21-1/2	17-3/8
Δ	-ISI	INTEGRATED SOLIDS INTERCEPTOR	60107H	35	70	3	14-1/2	4-7/8	26-1/8	23	19-3/8
Δ	-EXT	EXTENSION, 6" STANDARD (SPECIFY EXT. HEIGHT)	60108H	50	100	3	16-1/2	4-7/8	27-7/8	25-1/2	21-3/8
Δ	-RT	RECESSED TYPE	60109H	75	150	3	21	6	41	31	27
Δ	-ET	ENCLOSED TYPE	60110H	100	200	4	23	8	47	35	31
Δ	-HD	HEAVY-DUTY COVER									

Δ SEPARATE SUBMITTAL FOR THIS OPTION AVAILABLE

DATE OF LAST CHANGE: 7/25/14

DIMENSIONS ARE SUBJECT TO MANUFACTURERS TOLERANCES AND CHANGE WITHOUT NOTICE. WE CAN ASSUME NO RESPONSIBILITY FOR USE OF SUPERSEDED OR VOID DATA.

**JOSAM COMPANY**  
MICHIGAN CITY, INDIANA

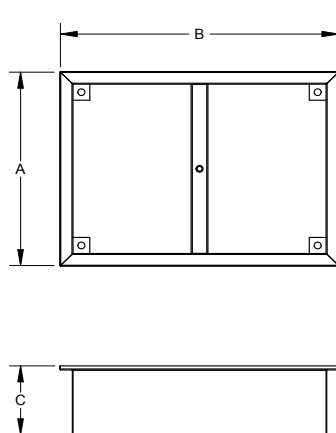
NOTES

**SPECIFICATION:**

JOSAM SERIES 60100H-BXT EPOXY COATED FABRICATED STEEL BOLT-ON EXTENSION FOR 60100H SERIES INTERCEPTORS WITH RUBBER GASKET THAT ALLOWS RE-USE OF COVER SHIPPED WITH STANDARD UNIT.

**GREASE INTERCEPTOR  
BOLT-ON EXTENSION**

SERIES **60100H-BXT**



SPECIFY "C"

C = \_\_\_\_\_

MODEL	A	B
60102H-BXT	13	14-7/8
60103H-BXT	14-1/2	16-5/8
60104H-BXT	17	20-3/8
60105H-BXT	19	20-7/8
60106H-BXT	21-1/2	23-3/8
60107H-BXT	23	26-1/8
60108H-BXT	25-1/2	27-7/8
60109H-BXT	31	41
60110H-BXT	35	47

DATE OF LAST CHANGE: 08/05/10

DIMENSIONS ARE SUBJECT TO MANUFACTURERS TOLERANCES AND CHANGE WITHOUT NOTICE. WE CAN ASSUME NO RESPONSIBILITY FOR USE OF SUPERSEDED OR VOID DATA.

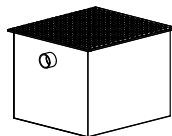
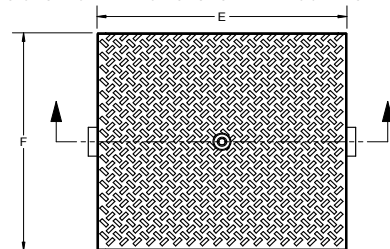
**JOSAM COMPANY**  
MICHIGAN CITY, INDIANA

NOTES

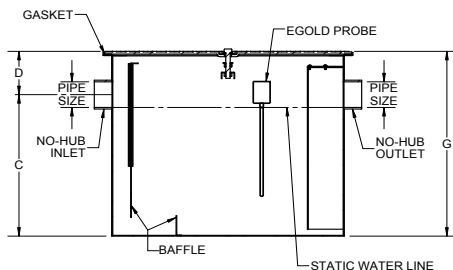
**SPECIFICATION:**

JOSAM 60100H-EGOLD SERIES ACID-RESISTING EPOXY COATED FABRICATED STEEL GREASE INTERCEPTOR, NO-HUB CONNECTIONS, INTERNAL TRAP, REMOVABLE BAFFLE, GASKETED NON-SKID COVER AND FLOW CONTROL FITTING AND PROVIDED WITH EGOLD-1000 GREASE LEVEL SENSING PROBE AND WALL BOX WITH ALARM.

CONFORMS TO PLUMBING AND DRAINAGE INSTITUTE STANDARD PDI-G101 AND ASME A112.4.3



EGOLD-1000  
WALL BOX  
AND PROBE



X	-EGOLD	GREASE LEVEL DETECTOR
	-SS	STAINLESS STEEL INTERCEPTOR
	-61	FLANGE AND CLAMP DEVICE
	-ISI	INTEGRATED SOLIDS INTERCEPTOR
	-EXT	EXTENSION, 6" STD. (SPECIFY EXT. HT.)
	-HD	HEAVY-DUTY COVER

	TYPE	FLOW (GPM)	CAP. (LBS.)	PIPE SIZE	C	D	E	F	G
	60104H	15	30	2	9-1/2	3-3/8	20-3/8	17	12-7/8
	60105H	20	40	3	12	4-7/8	20-7/8	19	16-7/8
	60106H	25	50	3	13	4-7/8	23-3/8	21-1/2	17-3/8
	60107H	35	70	3	14-1/2	4-7/8	26-1/8	23	19-3/8
	60108H	50	100	3	16-1/2	4-7/8	27-7/8	25-1/2	21-3/8
	60109H	75	150	3	21	6	41	31	27
	60110H	100	200	4	23	8	47	35	31

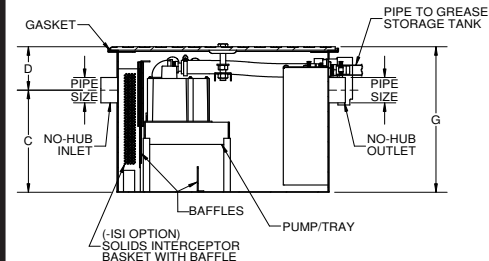
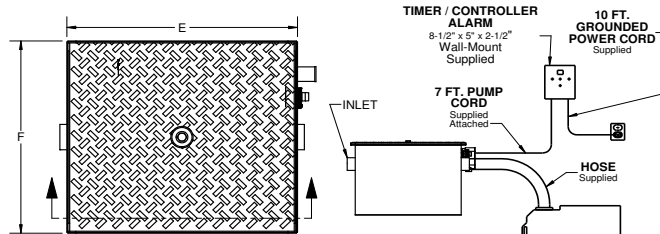
**GREASE INTERCEPTOR**

GREASE LEVEL SENSING  
AND ALARM

SERIES **60100H-EGOLD**

**SPECIFICATION:**

JOSAM 60100H-GRD SERIES EPOXY COATED FABRICATED STEEL GREASE INTERCEPTOR, NO-HUB CONNECTIONS, INTERNAL TRAP, REMOVABLE DIFFUSER BAFFLE, GASKETED NON-SKID CENTER BOLT COVER, FLOW CONTROL FITTING AND PDI SEAL OF APPROVAL (60104-60108 SIZES), ADJUSTABLE TIMER (1-99 DAYS) CONTROLS INTERNAL PUMP FOR REMOVAL OF GREASE TO FACTORY STORAGE TANK.



-40	COVER RECESS FOR FLOOR FINISH	-HD	HEAVY-DUTY COVER
-61	FLANGE AND CLAMP DEVICE	-SS	STAINLESS STEEL INTERCEPTOR
-EXT	EXTENSION, 6" STANDARD (SPECIFY EXTENSION HEIGHT)	-ISI	SOLIDS INTERCEPTOR BASKET

	TYPE	FLOW RATE	CAP. (LBS.)	PIPE SIZE	C	D	E	F	G
	*60104H-GRD	15	30	2	9-1/2	3-3/8	20-3/8	17	12-7/8
	*60105H-GRD	20	40	3	12	4-7/8	20-7/8	19	16-7/8
	*60106H-GRD	25	50	3	13	4-7/8	23-3/8	21-1/2	17-7/8
	**60107H-GRD	35	70	3	14-1/2	4-7/8	26-1/8	23	19-3/8
	**60108H-GRD	50	100	3	16-1/2	4-7/8	27-7/8	25-1/2	21-3/8
	***60109H-GRD	75	150	3	21	6	41	31	27
	***60110H-GRD	100	200	4	23	8	47	35	31

\* 5 Gal. Tank

\*\* 10 Gal. Tank

\*\*\* 30 Gal. Tank

DATE OF LAST CHANGE: 8/1/14

DIMENSIONS ARE SUBJECT TO MANUFACTURERS TOLERANCES AND CHANGE WITHOUT NOTICE. WE CAN ASSUME NO RESPONSIBILITY FOR USE OF SUPERSEDED OR VOID DATA.

**JOSAM COMPANY**

MICHIGAN CITY, INDIANA

NOTES

DATE OF LAST CHANGE: 04/30/15

DIMENSIONS ARE SUBJECT TO MANUFACTURERS TOLERANCES AND CHANGE WITHOUT NOTICE. WE CAN ASSUME NO RESPONSIBILITY FOR USE OF SUPERSEDED OR VOID DATA.

**JOSAM COMPANY**

MICHIGAN CITY, INDIANA

NOTES



**WARNING:** Cancer and Reproductive Harm - [www.p65warnings.ca.gov](http://www.p65warnings.ca.gov)



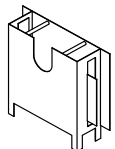
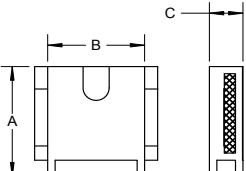
**SPECIFICATION:**

JOSAM SERIES 60100H-ISI EPOXY COATED STEEL SOLIDS BASKET FOR USE IN SERIES 60100H GREASE INTERCEPTORS. PERFORATED SCREEN ON SIDES AND BOTTOM TO BE Ø5/32" HOLES WITH 62% OPEN AREA.

**INTERCEPTOR  
INTEGRATED SOLIDS BASKET**

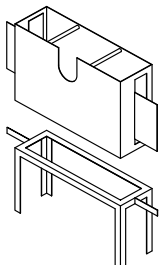
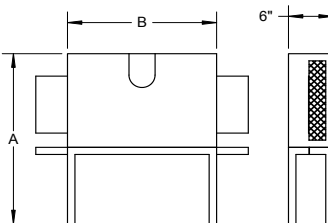
SERIES **60100H-ISI**

**FOR 60104H - 60108H**

PT. NO.	MODEL	A	B	C
080344	60104H	8	12	2
080345	60105H	12	13	4 1/2
080346	60106H	13	13	4 1/2
080347	60107H	14 1/2	13	4 1/2
080348	60108H	16 1/2	13	4 1/2

**FOR 60109H - 60110H  
STAND AND BASKET SET**

PT. NO.	MODEL	A	B
080349	60109H	24	20
080350	60110H	27	24

DATE OF LAST CHANGE: 4/24/15

**JOSAM COMPANY**  
MICHIGAN CITY, INDIANA

NOTES

DIMENSIONS ARE SUBJECT TO MANUFACTURERS TOLERANCES AND CHANGE WITHOUT NOTICE. WE CAN ASSUME NO RESPONSIBILITY FOR USE OF SUPERSEDED OR VOID DATA.

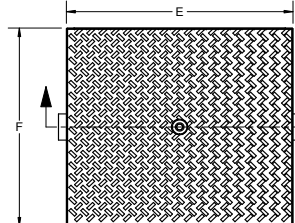
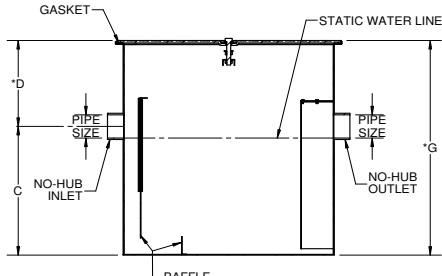
**SPECIFICATION:**

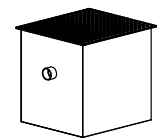
JOSAM 60100H-EXT SERIES EPOXY COATED FABRICATED STEEL GREASE INTERCEPTOR, DEEP ROUGHING INTEGRAL EXTENSION FLUSH-WITH-FLOOR TYPE, NO-HUB CONNECTIONS, INTERNAL TRAP, REMOVABLE DIFFUSER BAFFLE, GASKETED NON-SKID COVER, FLOW CONTROL FITTING AND PDI SEAL OF APPROVAL.

**GREASE INTERCEPTOR  
MANUAL TYPE**

SERIES **60100H-EXT**

CONFORMS TO PLUMBING AND DRAINAGE INSTITUTE STANDARD PDI-G101 AND ASME A112.14.3



ACCEPTED FOR USE  
CITY OF NEW YORK  
DEPARTMENT OF BUILDINGS  
MEA 255-06-E VOL. 1

**For Custom Extension Height:**

Specify "D" Dimension = \_\_\_\_ in.

New "G" Dimension = \_\_\_\_ in.  
("C" + "D")

	LEGEND	GREASE/OIL LEVEL DETECTOR (15-100gpm sizes)	TYPE	FLOW (GPM)	CAP. (LBS.)	PIPE SIZE	C	*D	E	F	*G
-SS	STAINLESS STEEL INTERCEPTOR										
-GRD	GREASE REMOVAL DEVICE (TIMER)		60102H-EXT	7	14	2	8-1/4	9-3/8	14-7/8	13	17-5/8
-40	COVER RECESS FOR FLOOR FINISH		60103H-EXT	10	20	2	8-1/2	9-3/8	16-5/8	14-1/2	17-7/8
-61	FLANGE AND CLAMP DEVICE		60104H-EXT	15	30	2	9-1/2	9-3/8	20-3/8	17	18-7/8
-85	ENZYMATIC PORT IN COVER		60105H-EXT	20	40	3	12	10-7/8	20-7/8	19	22-7/8
X	-EXT EXTENSION, 6" STANDARD (SPECIFY EXT. HEIGHT)		60106H-EXT	25	50	3	13	10-7/8	23-3/8	21-1/2	23-3/8
-ISI	INTEGRATED SOLIDS INTERCEPTOR		60107H-EXT	35	70	3	14-1/2	10-7/8	26-1/8	23	25-3/8
-HD	HEAVY-DUTY COVER		60108H-EXT	50	100	3	16-1/2	10-7/8	27-7/8	25-1/2	27-3/8
			60109H-EXT	75	150	3	21	12	41	31	33
			60110H-EXT	100	200	4	23	14	47	35	37

\*DIMENSIONS BASED ON STANDARD 6" EXTENSION

DATE OF LAST CHANGE: 7/25/14

**JOSAM COMPANY**  
MICHIGAN CITY, INDIANA

NOTES

DIMENSIONS ARE SUBJECT TO MANUFACTURERS TOLERANCES AND CHANGE WITHOUT NOTICE. WE CAN ASSUME NO RESPONSIBILITY FOR USE OF SUPERSEDED OR VOID DATA.



**SPECIFICATION:**

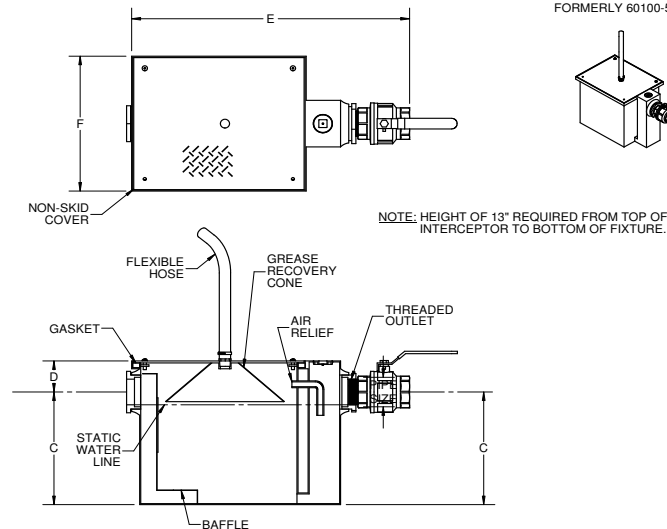
JOSAM 60100-SA SERIES EPOXY COATED FABRICATED STEEL SEMI-AUTOMATIC GREASE INTERCEPTOR WITH THREADED CONNECTIONS, INTERNAL AIR-RELIEF, VISIBLE DOUBLE WALL TRAP, REMOVABLE BAFFLE, GASKETED NON-SKID COVER, GREASE RECOVERY CONE, FLEXIBLE HOSE, GREASE DRAW-OFF VALVE AND FLOW CONTROL FITTING.

**GREASE INTERCEPTOR**

SEMI-AUTOMATIC  
ON-FLOOR TYPE

SERIES **60100-SA**

FORMERLY 60100-50A



-62	4\" INLET & OUTLET (AVAILABLE ON 6-9 SIZES)
-65	HUB INLET, SPIGOT 2\"
-66	HUB INLET, SPIGOT 3\"
-67	HUB INLET, SPIGOT 4\"
-85	ENZYMATIC PORT IN COVER
-RT	RECESSED TYPE
-ET	ENCLOSED TYPE

Δ SEPARATE SUBMITTAL FOR THIS OPTION AVAILABLE

	TYPE	FLOW RATE	CAP. (LBS.)	PIPE SIZE	C	D	E	F	G
	60102-SA	7	14	2"	7-3/8	2-5/8	20-1/2	10	10
	60103-SA	10	20	2"	8-3/8	2-7/8	22	11-1/2	11-1/4
	60104-SA	15	30	2"	9-3/8	4	24-1/4	12-3/4	13-3/8
	60105-SA	20	40	2"	11-1/2	4	27	14-7/8	15-5/8
	60106-SA	25	50	3"	13	4-3/8	32	16-1/2	17-3/8
	60107-SA	35	70	3"	14-1/2	4	33-5/8	17-1/2	18-1/2
	60108-SA	50	100	3"	15-1/2	4-7/8	37-1/4	19-3/4	20-3/8
	60109-SA	75	150	3"	17-1/2	6	40-5/8	22	23-1/2

\*3" SIZES NORMALLY FURNISHED WITH 4" x 3" REDUCING BUSHING

**SPECIFICATION:**

JOSAM 60100-SA-ET SERIES EPOXY COATED FABRICATED STEEL SEMI-AUTOMATIC GREASE INTERCEPTOR, DEEP ROUGHING FLUSH-WITH-FLOOR TYPE WITH THREADED CONNECTIONS, INTERNAL AIR-RELIEF, VISIBLE DOUBLE WALL TRAP, REMOVABLE BAFFLE, GASKETED NON-SKID COVER, GREASE RECOVERY CONE, FLEXIBLE HOSE, GREASE DRAW-OFF VALVE, FLOW CONTROL FITTING AND STEEL ENCLOSURE CABINET WITH NON-SKID COVER AND ADJUSTABLE INTERCEPTOR CARRIER BRACKETS.

**GREASE INTERCEPTOR**

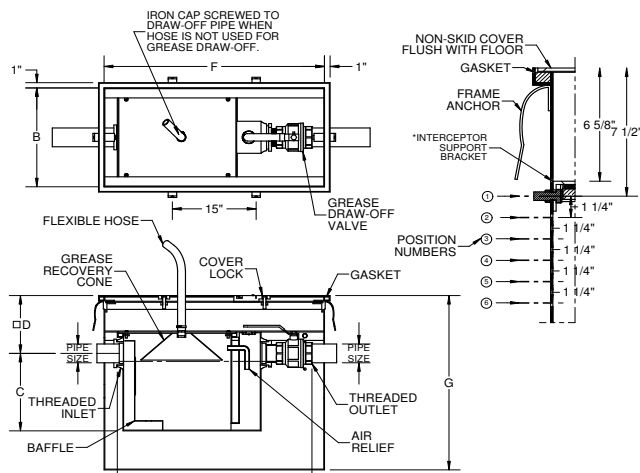
SEMI-AUTOMATIC  
ENCLOSED TYPE

SERIES **60100-SA-ET**

FORMERLY 60140-50A SERIES

NOTE: HEIGHT OF 13" REQUIRED FROM TOP OF INTERCEPTOR TO BOTTOM OF FIXTURE.

NOTE: INTERCEPTOR SUPPORT BRACKETS ADJUSTABLE FOR VARYING DEPTHS OF FLOOR CONSTRUCTION.



-62	4\" INLET & OUTLET (AVAIL. ON STD. 9\" SIZES)
-65	HUB INLET, SPIGOT OUTLET, 2\"
-66	HUB INLET, SPIGOT OUTLET, 3\"
-67	HUB INLET, SPIGOT OUTLET, 4\"
-85	ENZYMATIC PORT IN COVER
X	-ET ENCLOSED TYPE

	TYPE	FLOW RATE	CAP. (LBS.)	PIPE SIZE	B	C	D	E	F	G
	60102-SA-ET	7	14	2"	11	7-3/8	7-5/8	20-1/2	27-1/2	24-5/8
	60103-SA-ET	10	20	2"	12-5/8	8-3/8	8-1/4	22	29	25-7/8
	60104-SA-ET	15	30	2"	14-1/4	9-3/8	9-3/8	24-1/4	31-1/4	27-1/8
	60105-SA-ET	20	40	2"	16	11-1/2	10	27	34	29-1/8
	60106-SA-ET	25	50	3"	17-1/2	13	9-3/4	32	38	31-1/2
	60107-SA-ET	35	70	3"	18-1/2	14-1/2	9-3/8	33-5/8	39-1/2	32-5/8
	60108-SA-ET	50	100	3"	20-1/4	15-1/2	10-1/4	37-1/4	43-1/8	34-5/8
	60109-SA-ET	75	150	3"	22-5/8	17-1/2	11-3/8	41-1/2	46-3/4	37-1/2

\*3" SIZES NORMALLY FURNISHED WITH 4" x 3" REDUCING BUSHING

□ DIMENSIONS BASED ON INTERCEPTOR IN POSITION #1; ADD 1-1/4" PER EACH SUCCEEDING LOWER POSITION.

DATE OF LAST CHANGE: 9/29/14

DIMENSIONS ARE SUBJECT TO MANUFACTURERS TOLERANCES AND CHANGE WITHOUT NOTICE. WE CAN ASSUME NO RESPONSIBILITY FOR USE OF SUPERSEDED OR VOID DATA.

**JOSAM COMPANY**  
MICHIGAN CITY, INDIANA

NOTES

DATE OF LAST CHANGE: 9/4/14

DIMENSIONS ARE SUBJECT TO MANUFACTURERS TOLERANCES AND CHANGE WITHOUT NOTICE. WE CAN ASSUME NO RESPONSIBILITY FOR USE OF SUPERSEDED OR VOID DATA.

**JOSAM COMPANY**  
MICHIGAN CITY, INDIANA

NOTES



**SPECIFICATION:**

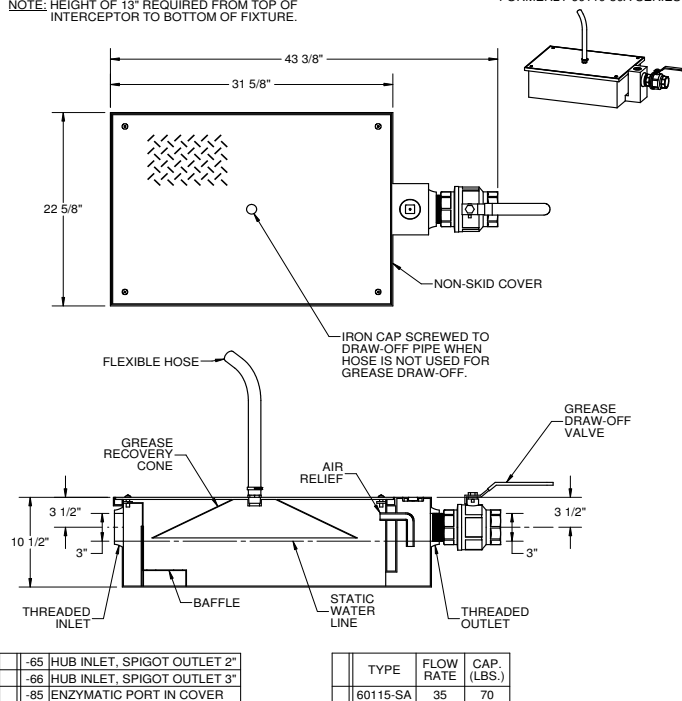
JOSAM 60110A-SA SERIES EPOXY COATED FABRICATED STEEL SEMI-AUTOMATIC GREASE INTERCEPTOR, SHALLOW TYPE. THREADED CONNECTIONS, INTERNAL AIR-RELIEF, VISIBLE DOUBLE WALL TRAP, REMOVABLE BAFFLE, GASKETED NON-SKID COVER, GREASE RECOVERY CONE, FLEXIBLE HOSE, GREASE DRAW-OFF VALVE AND FLOW CONTROL FITTING.

**GREASE INTERCEPTOR  
SEMI-AUTOMATIC LOW TYPE**

SERIES **60110-SA**

FORMERLY 60110-50A SERIES

NOTE: HEIGHT OF 13" REQUIRED FROM TOP OF INTERCEPTOR TO BOTTOM OF FIXTURE.

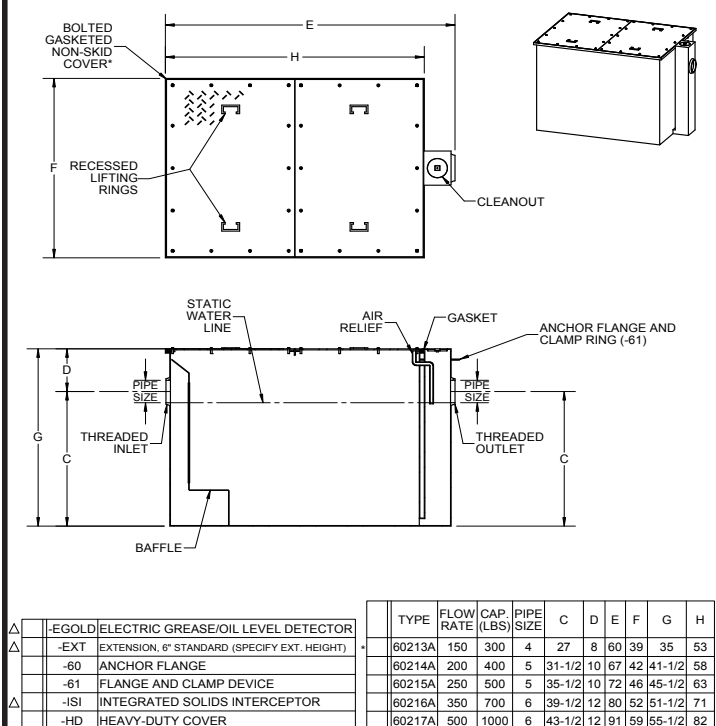


**SPECIFICATION:**

JOSAM 60210A SERIES ACID RESISTANT EPOXY COATED (INSIDE AND OUT) FABRICATED STEEL GREASE INTERCEPTOR, HIGH VOLUME. THREADED CONNECTIONS, INTERNAL AIR-RELIEF, VISIBLE DOUBLE WALL TRAP, REMOVABLE DIFFUSER BAFFLE, GASKETED NON-SKID COVER AND FLOW CONTROL FITTING.

**GREASE INTERCEPTOR  
MANUAL HIGH-VOLUME TYPE**

SERIES **60210A**



DATE OF LAST CHANGE: 9/5/14

DIMENSIONS ARE SUBJECT TO MANUFACTURERS TOLERANCES AND CHANGE WITHOUT NOTICE. WE CAN ASSUME NO RESPONSIBILITY FOR USE OF SUPERSEDED OR VOID DATA.

**JOSAM COMPANY**  
MICHIGAN CITY, INDIANA

NOTES

DATE OF LAST CHANGE: 10/31/14

DIMENSIONS ARE SUBJECT TO MANUFACTURERS TOLERANCES AND CHANGE WITHOUT NOTICE. WE CAN ASSUME NO RESPONSIBILITY FOR USE OF SUPERSEDED OR VOID DATA.

**JOSAM COMPANY**  
MICHIGAN CITY, INDIANA

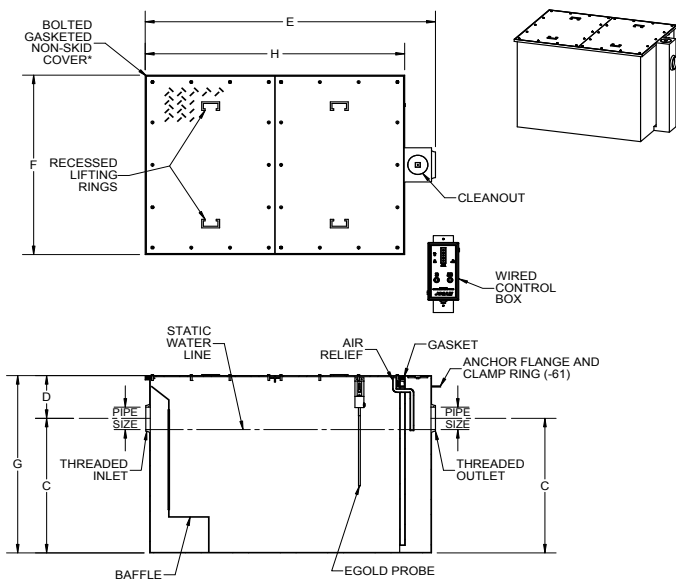
NOTES

Δ SEPARATE SUBMITTAL FOR THIS OPTION AVAILABLE

\*THIS SIZE FURNISHED WITH ONE-PIECE COVER

**SPECIFICATION:**

JOSAM 60210A-EGOLD SERIES ACID RESISTANT EPOXY COATED FABRICATED STEEL GREASE INTERCEPTOR, HIGH VOLUME, THREADED CONNECTIONS, INTERNAL AIR-RELIEF, VISIBLE DOUBLE WALL TRAP, REMOVABLE DIFFUSER BAFFLE, GASKETED NON-SKID COVER, FLOW CONTROL FITTING AND FACTORY INSTALLED JOSAM EGOLD-1000 ELECTRONIC GREASE/OIL LEVEL DETECTOR.

**GREASE INTERCEPTOR**  
**MANUAL HIGH-VOLUME TYPE**
**SERIES 60210A-EGOLD**


	EGOLD	ELECTRIC GREASE/OIL LEVEL DETECTOR
-EXT	EXTENSION, 6" STANDARD (SPECIFY EXT. HEIGHT)	
-60	ANCHOR FLANGE	
-61	FLANGE AND CLAMP DEVICE	
-ISI	INTEGRATED SOLIDS INTERCEPTOR	
-HD	HEAVY-DUTY COVER	

	TYPE	FLOW RATE (LBS)	CAP. (LBS)	PIPE SIZE	C	D	E	F	G	H
	60213A-EGOLD	150	300	4	27	8	60	39	35	53
	60214A-EGOLD	200	400	5	31-1/2	10	67	42	41-1/2	58
	60215A-EGOLD	250	500	5	35-1/2	10	72	46	45-1/2	63
	60216A-EGOLD	350	700	6	39-1/2	12	80	52	51-1/2	71
	60217A-EGOLD	500	1000	6	43-1/2	12	91	59	55-1/2	82

\*THIS SIZE FURNISHED WITH ONE-PIECE COVER

DATE OF LAST CHANGE: 4/24/15

DIMENSIONS ARE SUBJECT TO MANUFACTURERS TOLERANCES AND CHANGE WITHOUT NOTICE. WE CAN ASSUME NO RESPONSIBILITY FOR USE OF SUPERSEDED OR VOID DATA.

**JOSAM COMPANY**  
MICHIGAN CITY, INDIANA

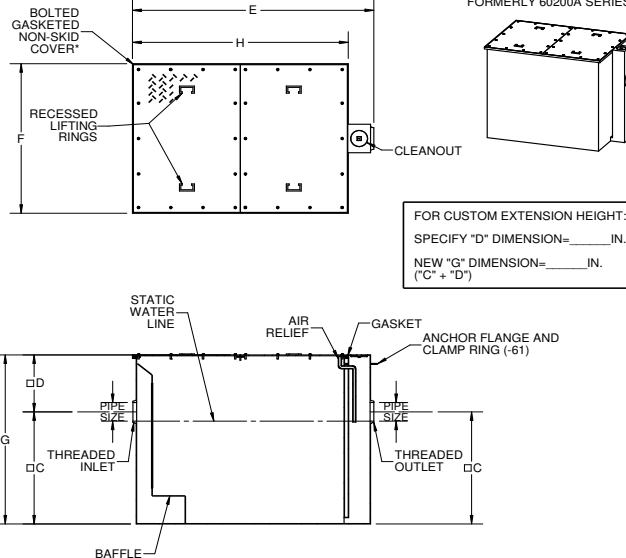
NOTES

**SPECIFICATION:**

JOSAM 60210A-EXT SERIES ACID RESISTANT EPOXY COATED FABRICATED STEEL GREASE INTERCEPTOR, HIGH VOLUME, DEEP ROUGHING, INTEGRAL EXTENSION, THREADED CONNECTIONS, INTERNAL AIR-RELIEF, VISIBLE DOUBLE WALL TRAP, REMOVABLE DIFFUSER BAFFLE, GASKETED NON-SKID COVER AND FLOW CONTROL FITTING.

**GREASE INTERCEPTOR**  
**MANUAL HIGH-VOLUME TYPE**
**SERIES 60210A-EXT**

FORMERLY 60200A SERIES



FOR CUSTOM EXTENSION HEIGHT:  
SPECIFY "D" DIMENSION=\_\_\_\_IN.  
NEW "G" DIMENSION=\_\_\_\_IN.  
("C" + "D")

	EGOLD	ELECTRIC GREASE/OIL LEVEL DETECTOR
X -EXT	EXTENSION, 6" STANDARD (SPECIFY EXT. HEIGHT)	
-60	ANCHOR FLANGE	
-61	FLANGE AND CLAMP DEVICE	
-ISI	INTEGRATED SOLIDS INTERCEPTOR	
-HD	HEAVY-DUTY COVER	

	TYPE	FLOW RATE (LBS)	CAP. (LBS)	PIPE SIZE	C	D	E	F	G	H
	60213A-EXT	150	300	4	27	14	60	39	41	53
	60214A-EXT	200	400	5	31-1/2	16	67	42	47-1/2	58
	60215A-EXT	250	500	5	35-1/2	16	72	46	51-1/2	63
	60216A-EXT	350	700	6	39-1/2	18	80	52	57-1/2	71
	60217A-EXT	500	1000	6	43-1/2	18	91	59	61-1/2	82

□ DIMENSIONS BASED ON STANDARD 6" EXTENSION

\*THIS SIZE FURNISHED WITH ONE-PIECE COVER

DATE OF LAST CHANGE: 10/30/14

DIMENSIONS ARE SUBJECT TO MANUFACTURERS TOLERANCES AND CHANGE WITHOUT NOTICE. WE CAN ASSUME NO RESPONSIBILITY FOR USE OF SUPERSEDED OR VOID DATA.

**JOSAM COMPANY**  
MICHIGAN CITY, INDIANA

NOTES

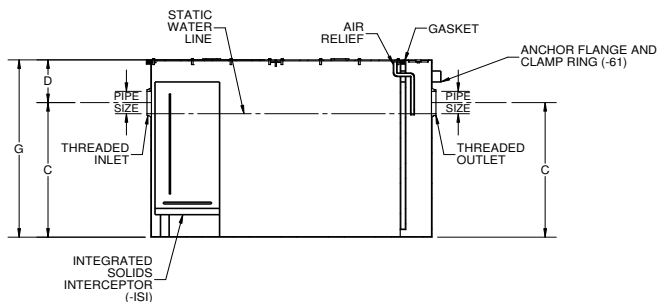
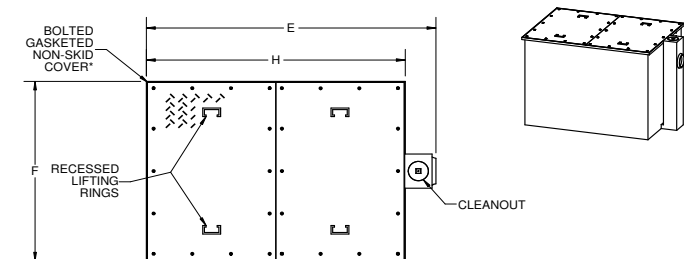
**⚠ WARNING: Cancer and Reproductive Harm - [www.p65warnings.ca.gov](http://www.p65warnings.ca.gov)**

**SPECIFICATION:**

JOSAM 60210A-ISI SERIES ACID RESISTANT EPOXY COATED FABRICATED STEEL GREASE INTERCEPTOR, HIGH VOLUME, THREADED CONNECTIONS, INTERNAL AIR-RELIEF, VISIBLE DOUBLE WALL TRAP, INTEGRATED SOLIDS INTERCEPTOR, GASKETED NON-SKID COVER AND FLOW CONTROL FITTING.

**GREASE INTERCEPTOR  
MANUAL HIGH-VOLUME TYPE**

SERIES **60210A-ISI**



	LEGEND	DESCRIPTION
	-EGOLD	ELECTRIC GREASE/OIL LEVEL DETECTOR
	-60	ANCHOR FLANGE
	-61	FLANGE AND CLAMP DEVICE
X	-ISI	INTEGRATED SOLIDS INTERCEPTOR
	-HD	HEAVY-DUTY COVER

	TYPE	FLOW RATE	CAP. (LBS)	PIPE SIZE	C	D	E	F	G	H
	60213A-ISI	150	300	4	27	8	60	39	35	53
	60214A-ISI	200	400	5	31-1/2	10	67	42	41-1/2	58
	60215A-ISI	250	500	5	35-1/2	10	72	46	45-1/2	63
	60216A-ISI	350	700	6	39-1/2	12	80	52	51-1/2	71
	60217A-ISI	500	1000	6	43-1/2	12	91	59	55-1/2	82

\*THIS SIZE FURNISHED WITH ONE-PIECE COVER

DATE OF LAST CHANGE: 10/30/14

DIMENSIONS ARE SUBJECT TO MANUFACTURERS' TOLERANCES AND CHANGE WITHOUT NOTICE. WE CAN ASSUME NO RESPONSIBILITY FOR USE OF SUPERSEDED OR VOID DATA.

**JOSAM COMPANY**  
MICHIGAN CITY, INDIANA

NOTES

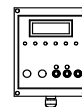
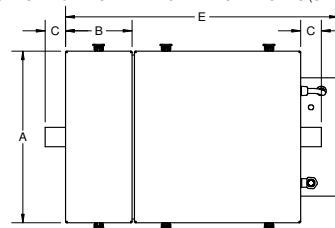
**SPECIFICATION:**

JOSAM 60300A (GI-2000A) SERIES AUTOMATIC GREASE RECOVERY DEVICE, 304 STAINLESS STEEL SHELL WITH INTEGRATED SUPPLEMENTAL REMOVABLE SOLIDS BASKET, STAINLESS STEEL DRAW LATCHES AND NON-ADHESIVE "U" CHANNEL GASKET, 55 GALLON POLYPROPYLENE RECLAIM TANK WITH ALARM, FACTORY INSTALLED GREASE/OIL LEVEL DETECTOR, HEATING ELEMENTS AND GREASE REMOVAL PUMP.

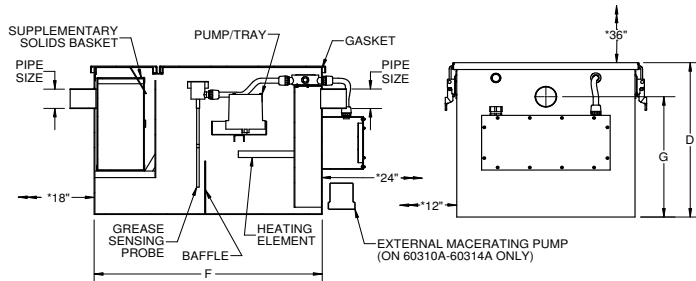
**GREASE INTERCEPTOR  
AUTOMATIC GREASE  
RECOVERY DEVICE**

SERIES **60300A** (GI-2000A)

UL LISTED & PDI CERTIFIED ON APPLICABLE UNITS (UP TO 50 GPM)



Continued product redesign and improvements make specifications subject to change without notice. Visit [www.josam.com](http://www.josam.com) for latest product information.



55 GAL. RECLAIM TANK NOT SHOWN

-CIS	CENTRAL INFO SYSTEM CONNECT
-24	EXTENDED WARRANTY PACKAGE
-33	55 GAL. STAINLESS RECLAIM TANK
-34	55 GAL. STEEL RECLAIM TANK

	TYPE	GPM FLOW	CAP. (LBS)	PIPE SIZE	A	B	C	D	E	F	G
	60306A	25	50	3	24-3/8	9	3-1/2	16	35-1/2	25-5/8	11
	60307A	35	70	3	24-3/8	9	3-1/2	20	40-5/8	31-1/2	15-1/2
	60308A	50	100	3	25-7/8	9	3-1/2	22-1/2	42-3/8	33	17-1/2
	60309A	75	150	4	25-7/8	9	3-1/2	26	56-1/8	46-3/4	21-1/2
	60310A*	100	200	4	35	9	3-1/2	31	67-1/2	58	23
	60311A*	150	300	4	39	9	3-1/2	35	73-3/4	64	27
	60312A*	200	400	6	43	9	3-1/2	41	80-3/4	71	31-1/2
	60313A*	250	500	6	47	9	3-1/2	44-3/4	85-3/4	76	35-1/2
	60314A*	350	700	6	47	9	3-1/2	48	105-1/2	96	39-1/2
	60315A**	500	1000	6	47	9	3-1/2	51	130-7/8	120	44

\* MINIMUM CLEARANCES

+ INCLUDES EXTERNAL MACERATING PUMP

\*\* UTILIZES TWO PUMPS & RECLAIM TANKS

DATE OF LAST CHANGE: 10/31/14

DIMENSIONS ARE SUBJECT TO MANUFACTURERS' TOLERANCES AND CHANGE WITHOUT NOTICE. WE CAN ASSUME NO RESPONSIBILITY FOR USE OF SUPERSEDED OR VOID DATA.

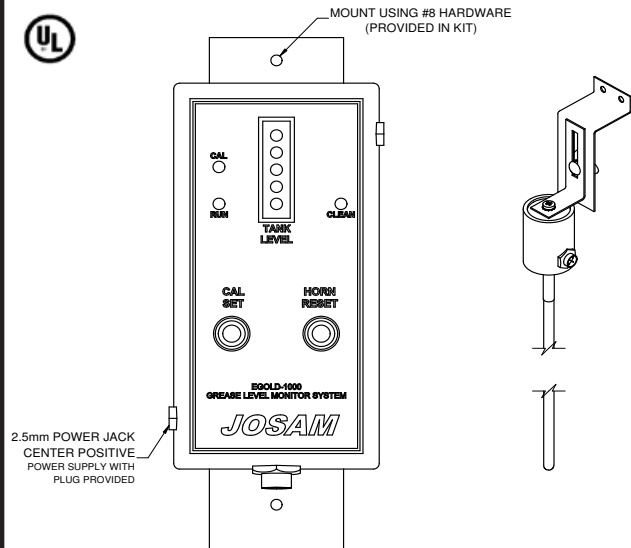
**JOSAM COMPANY**  
MICHIGAN CITY, INDIANA

NOTES

**SPECIFICATION:**

JOSAM EGOLD-1000 SERIES ELECTRONIC GREASE/OIL LEVEL DETECTOR WITH WALL MOUNTED CONTROLLER, POWERED BY UL LISTED 9VDC TRANSFORMER, L.E.D. INDICATORS WITH AUDIBLE ALARM AND 304 STAINLESS STEEL PROBE MOUNTING BRACKET (ATTACHED TO INSIDE WALL OF INTERCEPTOR)

**GREASE/OIL  
INTERCEPTOR  
ELECTRONIC GREASE/OIL  
LEVEL DETECTOR**  
SERIES **EGOLD-1000**

**CABLE LENGTHS:**

CONTROL BOX TO PROBE = 25ft.  
CONTROL BOX TO ELECTRICAL OUTLET = 6ft.

MODEL NUMBER	DISTANCE FROM BOTTOM OF INTERCEPTOR TO TOP OF OUTLET
EGOLD-1000-10	12" - 18"
EGOLD-1000-12	19" - 24"
EGOLD-1000-16	25" - 36"
EGOLD-1000-21	37" +

DATE OF LAST CHANGE: 3/6/15

DIMENSIONS ARE SUBJECT TO MANUFACTURERS  
TOLERANCES AND CHANGE WITHOUT NOTICE.  
WE CAN ASSUME NO RESPONSIBILITY FOR  
USE OF SUPERSEDED OR VOID DATA.

**JOSAM COMPANY**  
MICHIGAN CITY, INDIANA

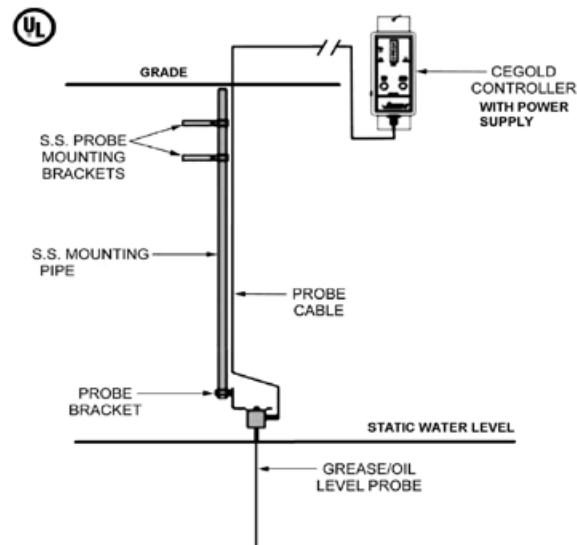
NOTES

**SPECIFICATION:**

JOSAM CEGOLD-2000 SERIES ELECTRONIC GREASE/OIL LEVEL DETECTOR WITH WALL MOUNTED CONTROLLER, POWERED BY UL LISTED 9VDC TRANSFORMER, L.E.D. INDICATORS WITH AUDIBLE ALARM AND PERMANENT MEMORY, STAINLESS STEEL MOUNTING PIPE AND BRACKETS. FOR USE IN OUTDOOR PIT STYLE GREASE/OIL INTERCEPTORS.

**GREASE/OIL INTERCEPTOR**

PIT ELECTRONIC GREASE/  
OIL LEVEL DETECTOR

SERIES **CEGOLD - 2000**

MODEL NUMBER	DISTANCE FROM GRADE TO STATIC WATER LEVEL
CEGOLD-2000-04	22" - 48"
CEGOLD-2000-06	49" - 72"
CEGOLD-2000-08	73" - 96"
CEGOLD-2000-10	97" - 120"

WHEN ORDERING, SPECIFY DISTANCE FROM GRADE TO STATIC WATER LEVEL.  
LONGER LENGTHS AVAILABLE UPON REQUEST.

DATE OF LAST CHANGE: 5/9/12

DIMENSIONS ARE SUBJECT TO MANUFACTURERS  
TOLERANCES AND CHANGE WITHOUT NOTICE.  
WE CAN ASSUME NO RESPONSIBILITY FOR  
USE OF SUPERSEDED OR VOID DATA.

**JOSAM COMPANY**  
MICHIGAN CITY, INDIANA

NOTES



**WARNING:** Cancer and Reproductive Harm - [www.p65warnings.ca.gov](http://www.p65warnings.ca.gov)



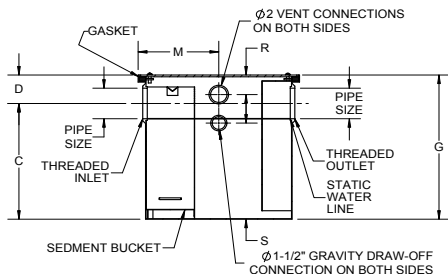
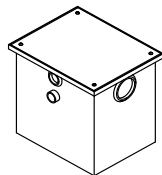
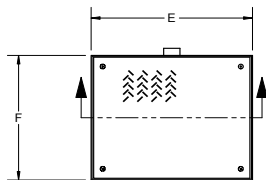
**SPECIFICATION:**

JOSAM 60500B SERIES EPOXY COATED FABRICATED STEEL OIL SEPARATOR, THREADED CONNECTIONS, INTERNAL TRAP, SEDIMENT BUCKET, TWO-VENT CONNECTIONS ON EACH SIDE, GASKETED NON-SKID COVER AND FLOW-CONTROL FITTING.

**OIL SEPARATOR  
DRAW-OFF, GRAVITY TYPE**

SERIES **60500B**

FORMERLY 60500A SERIES



Δ	-EXT	EXTENSION, 6" STANDARD (SPECIFY EXT. HEIGHT)
Δ	-EST	EXTRA STORAGE TANK
	-60	ANCHOR FLANGE (-EXT REQUIRED)
	-61	FLANGE AND CLAMP DEVICE (-EXT REQUIRED)
	-HD	HEAVY-DUTY COVER

Δ SEPARATE SUBMITTAL FOR THIS OPTION AVAILABLE

	TYPE	FLOW RATE (GPM)	PIPE SIZE	C	D	E	F	G	M	R	S
	60503B	10	2"	10 1/2"	4 1/8"	15 1/2"	12 3/8"	14 5/8"	6 5/8"	2 7/8"	8 1/2"
	60504B	15	2"	12 3/4"	3 3/8"	18 1/4"	14 1/2"	16 1/8"	8"	2 5/8"	10 3/4"
	60505B	20	*3"	14 5/8"	4 3/8"	20"	16 3/8"	19"	8 7/8"	2 3/4"	12"
	60506B	25	*3"	16"	4"	21 3/4"	17 1/2"	20"	9 3/4"	2 3/4"	13 1/2"
	60507B	35	*3"	16 3/4"	4 7/8"	25 1/4"	19 1/4"	21 5/8"	11 1/2"	2 3/4"	14 1/4"
	60508B	50	*3"	18 1/2"	6 1/4"	28 3/4"	21 1/2"	24 3/4"	13 1/4"	3"	16"

\* 3" SIZES NORMALLY FURNISHED WITH 4" x 3" REDUCING BUSHINGS

DATE OF LAST CHANGE: 9/19/14

DIMENSIONS ARE SUBJECT TO MANUFACTURERS TOLERANCES AND CHANGE WITHOUT NOTICE. WE CAN ASSUME NO RESPONSIBILITY FOR USE OF SUPERSEDED OR VOID DATA.

**JOSAM COMPANY**  
MICHIGAN CITY, INDIANA

NOTES

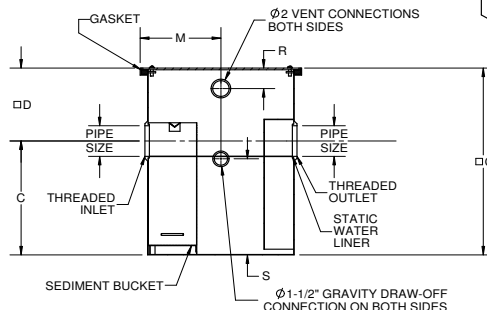
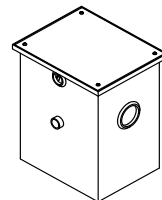
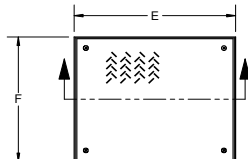
**SPECIFICATION:**

JOSAM 60500B-EXT SERIES EPOXY COATED FABRICATED STEEL OIL SEPARATOR, THREADED CONNECTIONS, DEEP ROUGHING, INTERNAL EXTENSION, INTERNAL TRAP, SEDIMENT BUCKET, TWO-VENT CONNECTIONS ON EACH SIDE, GASKETED NON-SKID COVER AND FLOW-CONTROL FITTING.

**OIL SEPARATOR  
DRAW-OFF, GRAVITY TYPE**

SERIES **60500B-EXT**

FORMERLY 60520A SERIES



X	-EXT	EXTENSION, 6" STANDARD (SPECIFY EXT. HEIGHT)
	-EST	EXTRA STORAGE TANK
	-60	ANCHOR FLANGE (4" DOWN FROM TOP)
	-61	FLANGE AND CLAMP DEVICE (4" DOWN FROM TOP)
	-HD	HEAVY-DUTY COVER

FOR CUSTOM EXTENSION HEIGHT:  
SPECIFY "D" DIMENSION= \_\_\_\_\_ IN.  
NEW "G" DIMENSION= \_\_\_\_\_ IN.  
("C" + "D")

	TYPE	FLOW RATE (GPM)	PIPE SIZE	C	□ D	E	F	□ G	M	R	S
	60503B	10	2"	10 1/2"	10 1/8"	15 -1/4"	12 3/4"	20 5/8"	7 1/2"	2 3/4"	8 1/2"
	60504B	15	2"	13"	10"	18"	14 3/4"	23"	9"	2 3/4"	10 5/8"
	60505B	20	*3"	14 3/8"	10 3/8"	19 15/16"	16 3/8"	25"	10"	2 3/4"	12"
	60506B	25	*3"	16"	10"	21 11/16"	17 1/2"	26 1/4"	10 1/2"	2 3/4"	13 1/2"
	60507B	35	*3"	16 3/4"	10 7/8"	25 1/8"	19 1/4"	27 7/8"	12 1/2"	2 3/4"	14 1/4"
	60508B	50	*3"	18 1/2"	12 1/4"	28 1/2"	21 1/2"	19 1/4"	14 1/4"	2 3/4"	16"

□ DIMENSIONS BASED ON STANDARD 6" EXTENSION

\* 3" SIZES NORMALLY FURNISHED WITH 4" x 3" REDUCING BUSHINGS

DATE OF LAST CHANGE: 7/14/14

DIMENSIONS ARE SUBJECT TO MANUFACTURERS TOLERANCES AND CHANGE WITHOUT NOTICE. WE CAN ASSUME NO RESPONSIBILITY FOR USE OF SUPERSEDED OR VOID DATA.

**JOSAM COMPANY**  
MICHIGAN CITY, INDIANA

NOTES

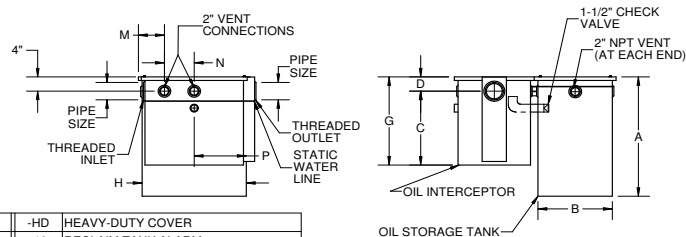
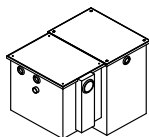
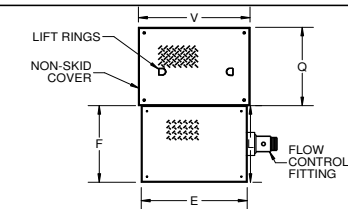
**SPECIFICATION:**

JOSAM 60500-EST STEEL OIL SEPARATOR, FLUSH-WITH-FLOOR TYPE WITH OIL STORAGE TANK, THREADED CONNECTIONS, FLAT-BOTTOM, VISIBLE DOUBLE WALL TRAP, SEDIMENT BUCKET, GASKETED COVER, ACID RESISTANT COATED (INSIDE & OUT), CHECK VALVE AND FLOW CONTROL FITTING.

# **OIL SEPARATOR WITH EXTERNAL STORAGE TANK**

SERIES **60500-EST**

FORMERLY 60500A-Q508



-HD	HEAVY-DUTY COVER
-19	RECLAIM TANK ALARM
-60	ANCHOR FLANGE
-61	ANCHOR FLANGE AND CLAMP DEVICE
-EXT	EXTENSION (SPECIFY "D" DIMENSION)

	TYPE	FLOW RATE (GAL.)	PIPE SIZE	A	B	C	D	E	F	G	H	L	M	N	P	Q	S	V
60503-EST-5	10	5	2	13-3/8	20	9-3/8	4	19-3/8	12-1/4	13-3/8	17-3/8	34-1/4	3-3/4	5	10	22	6	19-3/8
60503-EST-50	10	50	2	33-1/2	20	9-3/8	4	19-3/8	12-1/4	13-3/8	28	34-1/4	3-3/4	5	10	22	6	30
60504-EST-6	15	6	2	16-1/8	15-3/4	11-1/2	4-5/8	22-1/8	14	16-1/8	20-1/8	31-3/4	4-1/2	7-1/4	12-1/2	7-3/4	22-1/8	18
60504-EST-50	15	50	2	33-1/2	20	11-1/2	4-5/8	22-1/8	14	16-1/8	28	36	4-1/2	7-1/4	12-1/2	7-3/4	30	30
60505-EST-8	20	8	3	17-3/8	16-3/4	13	4-3/8	24-3/4	16	17-3/8	22-3/4	34-3/4	6-1/8	8	15-3/4	22	8-1/4	24-3/4
60505-EST-50	20	50	3	33-1/2	20	13	4-3/8	24-3/4	16	17-3/8	28	38	6-1/8	8	15-3/4	22	8-1/4	30
60506-EST-50	25	50	3	33-1/2	20	14-1/2	4	26-3/8	17	18-1/2	28	39	5-1/4	8	16-1/2	22	9-1/4	30
60506-EST-100	25	100	3	38	24	14-1/2	4	26-3/8	17	18-1/2	36	43	5-1/4	8	16-1/2	26	9-1/4	38
60507-EST-50	35	50	3	33-1/2	20	15-1/2	4-7/8	30	19-3/4	20-3/8	28	41-3/4	6-1/2	8	19	22	10	30
60507-EST-100	35	100	3	38	24	15-1/2	4-7/8	30	19-3/4	20-3/8	36	45-3/4	6-1/2	8	19	26	10	38
60508-EST-50	50	50	3	33-1/2	20	17-1/2	6	33-3/8	22	23-1/2	28	44	7	8	21-1/2	22	11-1/4	30
60508-EST-100	50	100	3	38	24	17-1/2	6	33-3/8	22	23-1/2	36	48	7	8	21-1/2	26	11-1/4	38

\*3" PIPE SIZE NORMALLY FURNISHED WITH 4" x 3" REDUCING BUSHING

DATE OF LAST CHANGE: 7/14/14

DIMENSIONS ARE SUBJECT TO MANUFACTURERS TOLERANCES AND CHANGE WITHOUT NOTICE. WE CAN ASSUME NO RESPONSIBILITY FOR USE OF SUPERSEDED OR VOID DATA.

**JOSAM COMPANY**  
MICHIGAN CITY, INDIANA

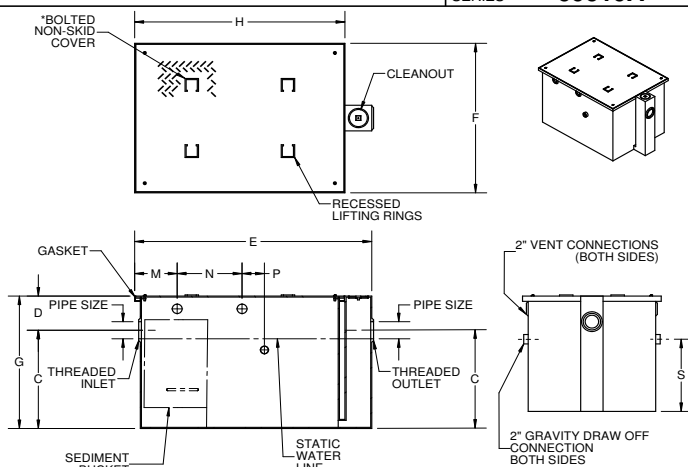
NOTES

**SPECIFICATION:**

JOSAM 60610A SERIES EPOXY COATED FABRICATED STEEL OIL SEPARATOR, HIGH-VOLUME, THREADED CONNECTIONS, VISIBLE DOUBLE WALL TRAP AND SEDIMENT BUCKET, ADJUSTABLE GRAVITY DRAW-OFF EITHER SIDE, TWO VENT CONNECTIONS ON EACH SIDE, GASKETED NON-SKID COVER AND FLOW-CONTROL FITTING.

# **OIL SEPARATOR DRAW-OFF, HIGH-VOLUME TYPE**

SERIES **60610A**



A	-EXT	EXTENSION, 6" STANDARD (SPECIFY EXT. HEIGHT)
A	-EST	EXTRA STORAGE TANK
	-EXT-60	EXTENSION, 6" STANDARD (SPECIFY EXT. HEIGHT) WITH ANCHOR FLANGE
	-HD	HEAVY-DUTY COVER (MUST SPECIFY WITH SEPARATOR ORDER)

A SEPARATE SUBMITTAL FOR THIS OPTION AVAILABLE

	TYPE	FLOW RATE	PIPE SIZE	C	D	E	F	G	H	M	N	P	S
	*60611A	75	3	21	6	46-1/4	31	27	41	8-1/4	12-1/2	10-1/4	13-1/2
	*60612A	100	4	23	8	54	35	31	47	9-1/2	14-1/2	12-1/2	15-1/4
	*60613A	150	4	27	8	60	39	35	53	10-1/2	16-1/2	14-1/2	19-1/4
	60614A	200	5	31-1/2	10	67	42	41-1/2	58	11-1/2	18-1/8	16	26-1/4
	60615A	250	5	35-1/2	10	72	46	45-1/2	63	12-1/2	20-1/4	17-1/2	29-3/4
	60616A	350	6	39-1/2	12	80	52	51-1/2	71	13-1/2	23	19-3/4	34-1/4
	60617A	500	6	43-1/2	12	91	59	55-1/2	82	16	27	23	38-1/4

\*THESE SIZES FURNISHED WITH ONE-PIECE COVER

DATE OF LAST CHANGE: 4/10/15

DIMENSIONS ARE SUBJECT TO MANUFACTURERS TOLERANCES AND CHANGE WITHOUT NOTICE. WE CAN ASSUME NO RESPONSIBILITY FOR USE OF SUPERSEDED OR VOID DATA.

**JOSAM COMPANY**  
MICHIGAN CITY, INDIANA

NOTES



**WARNING:** Cancer and Reproductive Harm - [www.p65warnings.ca.gov](http://www.p65warnings.ca.gov)



**WARNING: Cancer and Reproductive Harm - www.p65warnings.ca.gov**

Interceptors

# **SPECIFICATION:**

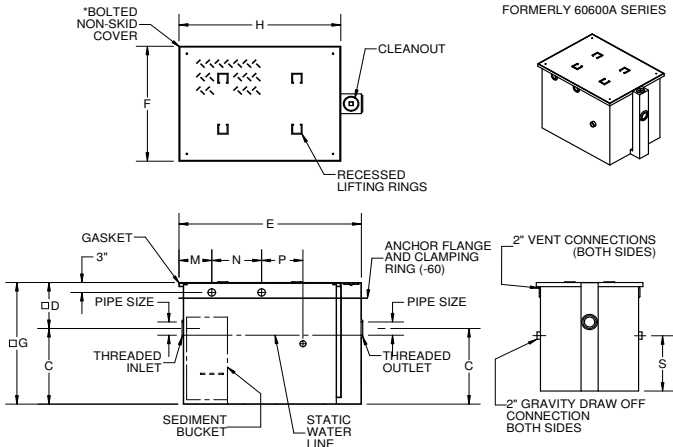
JOSAM 60610A-EXT SERIES EPOXY COATED FABRICATED STEEL OIL SEPARATOR, HIGH-VOLUME, DEEP ROUGHING, INTEGRAL EXTENSION, THREADED CONNECTIONS, VISIBLE DOUBLE WALL TRAP AND SEDIMENT BUCKET, ADJUSTABLE GRAVITY DRAW-OFF EITHER SIDE, TWO VENT CONNECTIONS ON EACH SIDE, GASKETED NON-SKID COVER AND FLOW-CONTROL FITTING.

## **OIL SEPARATOR**

**DRAW-OFF,  
HIGH-VOLUME TYPE**

**SERIES 60610A-EXT**

FORMERLY 60600A SERIES



X	-EXT	EXTENSION, 6" STANDARD (SPECIFY EXT. HEIGHT)
Δ	-EST	EXTERNAL STORAGE TANK
	-EXT-60	ANCHOR FLANGE WITH EXTENSION, 6" STANDARD (SPECIFY EXT. HEIGHT)
	-EXT-61	FLANGE AND CLAMP DEVICE WITH EXTENSION, 6" STANDARD (SPECIFY EXT. HEIGHT)
	-HD	HEAVY-DUTY COVER

**SPECIFY:**

D = \_\_\_\_\_

G = \_\_\_\_\_

Δ SEPARATE SUBMITTAL FOR THIS OPTION AVAILABLE

	TYPE	FLOW RATE	PIPE SIZE	C	OD	E	F	OG	H	M	N	P	S
	*60611A	75	3	21	12	46-1/4	31	33	41	8-1/4	12-1/2	10-1/4	13-1/2
	*60612A	100	4	23	14	54	35	37	47	9-1/2	14-1/2	12-1/2	15-1/4
	*60613A	150	4	27	14	60	39	41	53	10-1/2	16-1/2	14-1/2	19-1/4
	60614A	200	5	31-1/2	16	67	42	47-1/2	58	11-1/2	18-1/8	16	26-1/4
	60615A	250	5	35-1/2	16	72	46	51-1/2	63	12-1/2	20-1/4	17-1/2	29-3/4
	60616A	350	6	39-1/2	18	80	52	57-1/2	71	13-1/2	23	19-3/4	34-1/4
	60617A	500	6	43-1/2	18	91	59	61-1/2	82	16	27	23	38-1/4

OD DIMENSIONS BASED ON STANDARD 6" EXTENSION

\*THESE SIZES FURNISHED WITH ONE-PIECE COVER

DATE OF LAST CHANGE: 4/10/15

DIMENSIONS ARE SUBJECT TO MANUFACTURER'S TOLERANCES AND CHANGE WITHOUT NOTICE. WE CAN ASSUME NO RESPONSIBILITY FOR USE OF SUPERSEDED OR VOID DATA.

**JOSAM COMPANY**  
MICHIGAN CITY, INDIANA

NOTES

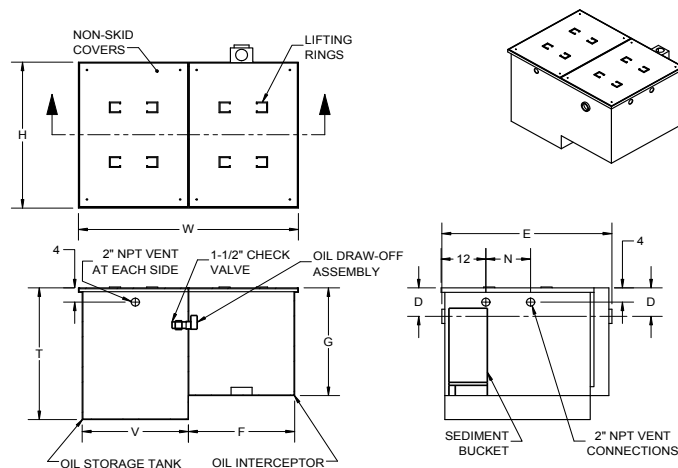
# **SPECIFICATION:**

JOSAM 60610-EST STEEL OIL SEPARATOR, FLUSH-WITH-FLOOR TYPE WITH OIL STORAGE TANK, THREADED CONNECTIONS, FLAT BOTTOM, VISIBLE DOUBLE WALL TRAP, SEDIMENT BUCKET, GASKETED COVER, ACID RESISTANT COATING (INSIDE AND OUT), CHECK VALVE, AND FLOW CONTROL FITTING\*\*.

## **OIL SEPARATOR**

**WITH EXTERNAL  
STORAGE TANK**

**SERIES 60610-EST**



	-19	RECLAIM TANK ALARM
	-EST-EXT	EXTENSION (SPECIFY "D" DIMENSION) MINIMUM "D" DIMENSION = 8"
X	-EST	EXTERNAL STORAGE TANK
	-HD	HEAVY DUTY COVER (MUST SPECIFY WITH SEPARATOR ORDER)

	TYPE	FLOW RATE	TANK SIZE (GAL.)	PIPE SIZE	D	E	F	G	H	N	T	V	W	WEIGHT (LBS.)	** FLOW CONTROL
	60611-EST	75	100	3	8	46	31	29	41	12	37	24	59	1200	60714
	60612-EST	100	250	4	8	54	35	31	47	14	48	35	70	1500	60714
	60613-EST	150	250	4	10	60	39	37	53	16	45	35	74	2000	60714
	*60614-EST	200	250	5	15	67	42	49	54	18	48	35	77	2400	60715
	*60615-EST	250	500	5	15	72	46	51	63	20	60	45	91	3000	60715
	*60616-EST	350	500	6	15	80	52	55	71	23	56	45	97	3800	60716
	*60617-EST	500	500	6	26	91	59	70	83	27	66	45	104	5200	60716

\*\*FURNISHED WITH 2-PIECE COVER

DATE OF LAST CHANGE: 04/28/15

DIMENSIONS ARE SUBJECT TO MANUFACTURER'S TOLERANCES AND CHANGE WITHOUT NOTICE. WE CAN ASSUME NO RESPONSIBILITY FOR USE OF SUPERSEDED OR VOID DATA.

**JOSAM COMPANY**  
MICHIGAN CITY, INDIANA

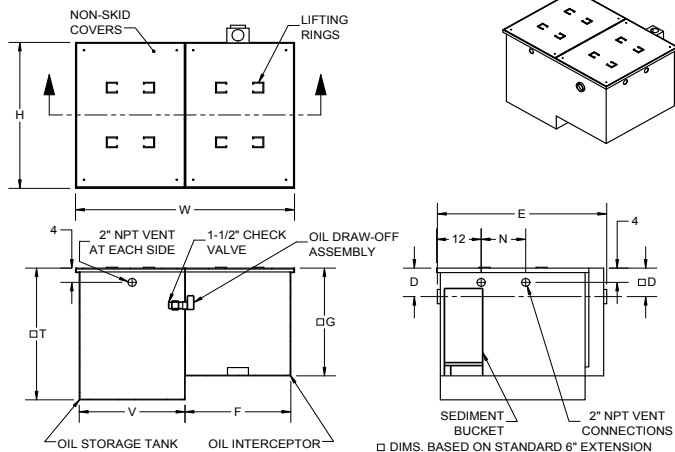
NOTES

**SPECIFICATION:**

JOSAM 60610-EST-EXT STEEL OIL SEPARATOR, FLUSH-WITH-FLOOR TYPE WITH OIL STORAGE TANK, THREADED CONNECTIONS, FLAT BOTTOM, VISIBLE DOUBLE WALL TRAP, SEDIMENT BUCKET, GASKETED COVER, ACID RESISTANT COATING (INSIDE AND OUT), CHECK VALVE, AND FLOW CONTROL FITTING\*\*.

# **OIL SEPARATOR WITH EXTERNAL STORAGE TANK**

SERIES **60610-EST-EXT**



	-19	RECLAIM TANK ALARM
X	-EST-EXT	EXTENSION (6\" STANDARD OR SPECIFY) (SEE 60610-EST FOR MIN \"D\")
	-60	ANCHOR FLANGE
	-61	ANCHOR FLANGE AND CLAMP
	-HD	HEAVY DUTY COVER (MUST SPECIFY WITH SEPARATOR ORDER)

SPECIFY:

D = \_\_\_\_\_

TYPE	FLOW RATE	TANK SIZE (GAL.)	PIPE SIZE	OD	E	F	OG	H	N	QT	V	W	WEIGHT (LBS.)	** FLOW CONTROL
60611-EST	75	100	3	14	46	31	35	41	12	43	24	59	1200	60714
60612-EST	100	250	4	14	54	35	37	47	14	54	35	70	1500	60714
60613-EST	150	250	4	16	60	39	43	53	16	51	35	74	2000	60714
*60614-EST	200	250	5	21	67	42	55	54	18	54	35	77	2400	60715
*60615-EST	250	500	5	21	72	46	57	63	20	66	45	91	3000	60715
*60616-EST	350	500	6	21	80	52	61	71	23	62	45	97	3800	60716
*60617-EST	500	500	6	31	91	59	76	83	27	72	45	104	5200	60716

\*FURNISHED WITH 2-PIECE COVER

DATE OF LAST CHANGE: 04/28/15

DIMENSIONS ARE SUBJECT TO MANUFACTURERS TOLERANCES AND CHANGE WITHOUT NOTICE. WE CAN ASSUME NO RESPONSIBILITY FOR USE OF SUPERSEDED OR VOID DATA.

**JOSAM COMPANY**  
MICHIGAN CITY, INDIANA

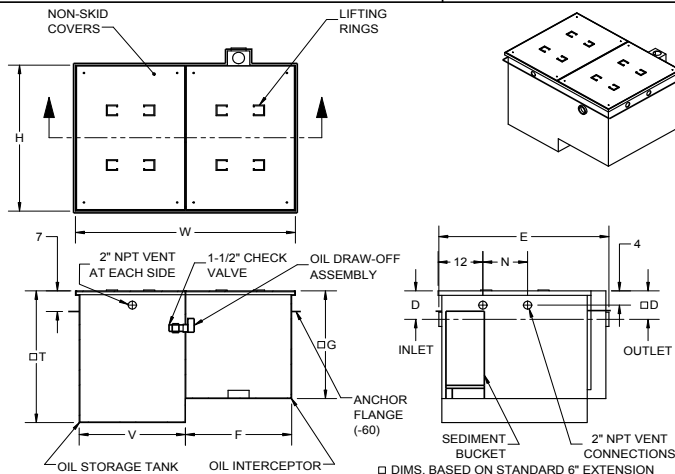
NOTES

**SPECIFICATION:**

JOSAM 60610-EST-EXT STEEL OIL SEPARATOR, FLUSH-WITH-FLOOR TYPE WITH OIL STORAGE TANK, THREADED CONNECTIONS, FLAT BOTTOM, VISIBLE DOUBLE WALL TRAP, SEDIMENT BUCKET, GASKETED COVER, ACID RESISTANT COATING (INSIDE AND OUT), CHECK VALVE, AND FLOW CONTROL FITTING\*\*.

# **OIL SEPARATOR WITH EXTERNAL STORAGE TANK**

SERIES **60610-EST-EXT-60**



	-19	RECLAIM TANK ALARM
X	-EST-EXT	EXTENSION (6\" STANDARD OR SPECIFY) (SEE 60610-EST FOR MIN \"D\")
	-60	ANCHOR FLANGE
	-61	ANCHOR FLANGE AND CLAMP
	-HD	HEAVY DUTY COVER (MUST SPECIFY WITH SEPARATOR ORDER)

SPECIFY:

D = \_\_\_\_\_

TYPE	FLOW RATE	TANK SIZE (GAL.)	PIPE SIZE	OD	E	F	OG	H	N	QT	V	W	WEIGHT (LBS.)	** FLOW CONTROL
60611-EST	75	100	3	14	46	31	35	41	12	43	24	59	1200	60714
60612-EST	100	250	4	14	54	35	37	47	14	54	35	70	1500	60714
60613-EST	150	250	4	16	60	39	43	53	16	51	35	74	2000	60714
*60614-EST	200	250	5	21	67	42	55	54	18	54	35	77	2400	60715
*60615-EST	250	500	5	21	72	46	57	63	20	66	45	91	3000	60715
*60616-EST	350	500	6	21	80	52	61	71	23	62	45	97	3800	60716
*60617-EST	500	500	6	31	91	59	76	83	27	72	45	104	5200	60716

\*FURNISHED WITH 2-PIECE COVER

DATE OF LAST CHANGE: 04/29/15

DIMENSIONS ARE SUBJECT TO MANUFACTURERS TOLERANCES AND CHANGE WITHOUT NOTICE. WE CAN ASSUME NO RESPONSIBILITY FOR USE OF SUPERSEDED OR VOID DATA.

**JOSAM COMPANY**  
MICHIGAN CITY, INDIANA

NOTES

**⚠ WARNING: Cancer and Reproductive Harm - www.p65warnings.ca.gov**

**SPECIFICATION:**

JOSAM 60810 SERIES STEEL OIL SEDIMENT SEPARATOR WITH ACID-RESISTING COATING, THREADED CONNECTION, FLAT BOTTOM, VISIBLE DOUBLE WALL TRAP, REMOVABLE SEDIMENT BUCKET, PRIMARY AND SECONDARY SCREENS AND MEDIUM-DUTY CAST IRON GRATE(S).

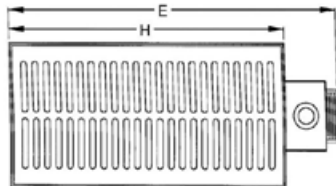
**OIL SEPARATOR  
OIL SEDIMENT INTERCEPTOR**

**60810**

**SERIES**

FORMERLY 61850 SERIES

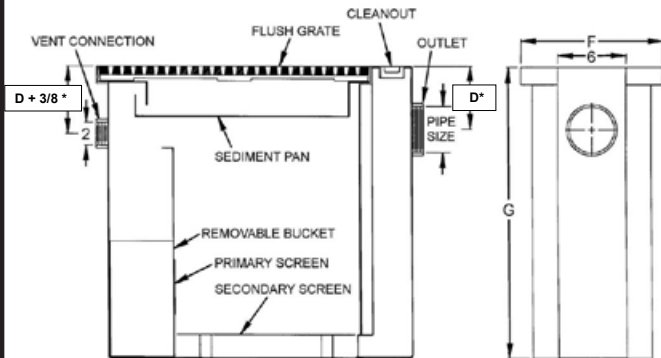
SLOT WIDTH 1/2"



**\*For Custom Extension Height:**

Specify "D" Dimension = \_\_\_\_\_ in

New "G" Dimension = \_\_\_\_\_ in



TYPE NO.	PIPE SIZE	GRATE FREE AREA	No. OF GRATES	SLUDGE CAP. (LBS)	D	E	F	G	H
60816	2	54 SQ. IN.	1	12	5-3/8	17-1/2	12-1/8	15	12-1/8
60817	4	112 SQ. IN.	1	60	5-3/8	29-7/8	12-1/2	25	24-1/2
60818	4	224 SQ. IN.	2	100	5-3/8	29-7/8	24-1/2	25	24-1/2
60819	4	336 SQ. IN.	3	200	5-3/8	41-7/8	24-1/2	35	36-1/2

DRAWING No. 01/17/13

**JOSAM COMPANY**  
MICHIGAN CITY, INDIANA

A-15122-K

NOTES:

**SPECIFICATION:**

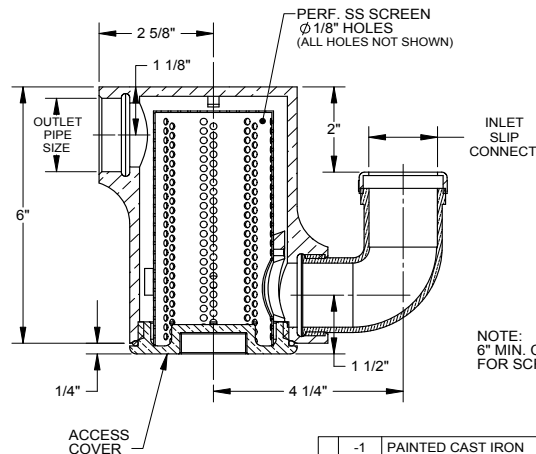
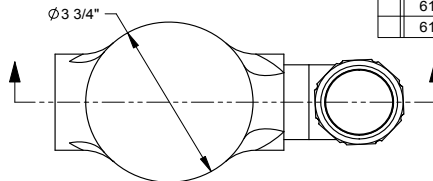
JOSAM 61000 SERIES NIKALOY SOLIDS INTERCEPTOR, BOTTOM ACCESS FIXTURE TRAP TYPE, SLIP JOINT INLET AND THREADED OUTLET CONNECTIONS, GASKETED COVER AND REMOVABLE PERFORATED STAINLESS STEEL BASKET.

**SOLIDS INTERCEPTOR  
BOTTOM ACCESS  
FIXTURE TRAP**

**SERIES**

**61000**

MODEL	INLET	OUTLET NPT
61001-1/4	1-1/4	1-1/2
61001-1/2	1-1/2	1-1/2



NOTE:  
6" MIN. CLEARANCE BELOW  
FOR SCREEN REMOVAL

-1	PAINTED CAST IRON
-3	POLISHED BRONZE
-30	ACID-RESISTING COATING INSIDE AND OUT

DATE OF LAST CHANGE: 10/14/09

DIMENSIONS ARE SUBJECT TO MANUFACTURERS TOLERANCES AND CHANGE WITHOUT NOTICE. WE CAN ASSUME NO RESPONSIBILITY FOR USE OF SUPERSEDED OR VOID DATA.

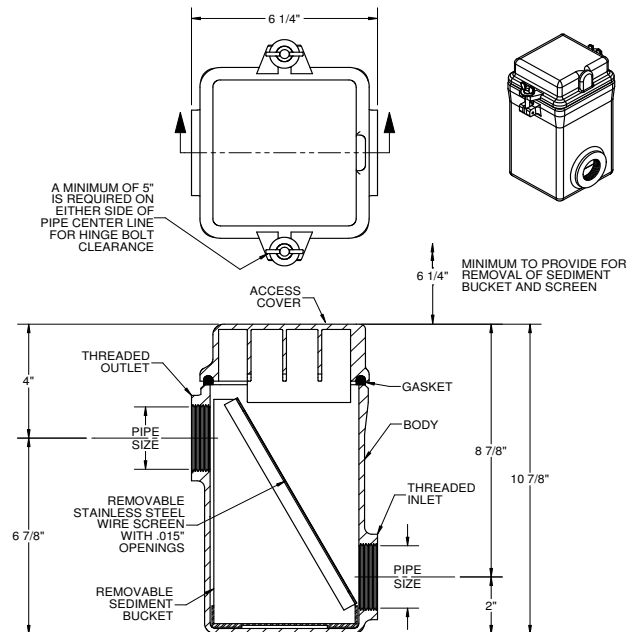
**JOSAM COMPANY**  
MICHIGAN CITY, INDIANA

NOTES

**SPECIFICATION:**

JOSAM 61030 SERIES COATED CAST IRON SOLIDS INTERCEPTOR, TOP ACCESS FIXTURE TRAP TYPE, THREADED CONNECTIONS, GASKETED COVER, REMOVABLE GALVANIZED STEEL BASKET AND STAINLESS STEEL SCREEN.

**SOLIDS INTERCEPTOR**  
**TOP ACCESS FIXTURE TRAP**

 SERIES **61030**


-26	CAST ALUMINUM
-30	ACID-RESISTING COATING INSIDE & OUT

TYPE	PIPE SIZE
61031-1/2	1-1/2
61032	2

DATE OF LAST CHANGE: 10/16/14

DIMENSIONS ARE SUBJECT TO MANUFACTURERS TOLERANCES AND CHANGE WITHOUT NOTICE. WE CAN ASSUME NO RESPONSIBILITY FOR USE OF SUPERSEDED OR VOID DATA.

**JOSAM COMPANY**  
 MICHIGAN CITY, INDIANA

NOTES

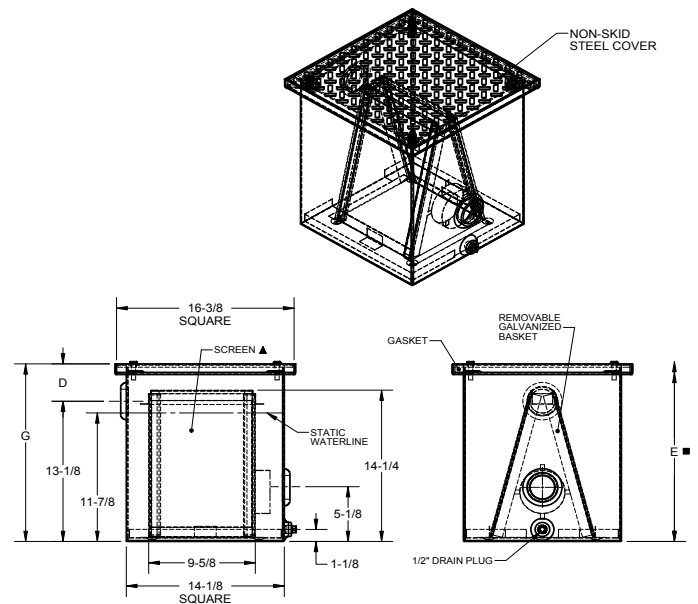
**SPECIFICATION:**

JOSAM SERIES 61040A STEEL SOLID INTERCEPTOR, TOP ACCESS ON FLOOR TYPE WITH ACID RESISTING COATING, THREADED CONNECTIONS, LOW INLET AND HIGH OUTLET, GASKETED NON-SKID COVER, REMOVABLE GALVANIZED STEEL BASKET WITH STAINLESS STEEL SCREENS.

**SOLIDS INTERCEPTOR**  
**TOP ACCESS ON-FLOOR TRAP**

 SERIES **61040A**

FORMERLY 61040 SERIES



▲ REMOVABLE STAINLESS STEEL WIRE SCREEN - 40 x 40 MESH WITH .015" OPENINGS

■ MINIMUM HEIGHT REQUIRED FOR REMOVAL OF SOLIDS BASKET IF \*-EXT\* OPTION IS SUPPLIED, ADD EXTENSION HEIGHT TO THIS DIMENSION.

TYPE	PIPE SIZE	DIM. "D"	DIM. "G"	DIM. "E"	-15	STAINLESS STEEL BASKET
61042A	2	3-1/2	16-5/8	31	-EXT	EXTENSION (SPECIFY "D" ON ORDER)
61043A	3	4-1/2	17-5/8	32	-16	MONEL SCREENS
61044A	4	5-1/2	18-5/8	33	-80SS	STAINLESS STEEL BASKET AND SCREENS

DATE OF LAST CHANGE: 2/11/2015

DIMENSIONS ARE SUBJECT TO MANUFACTURERS TOLERANCES AND CHANGE WITHOUT NOTICE. WE CAN ASSUME NO RESPONSIBILITY FOR USE OF SUPERSEDED OR VOID DATA.

**JOSAM COMPANY**  
 MICHIGAN CITY, INDIANA

NOTES

**⚠ WARNING: Cancer and Reproductive Harm - www.p65warnings.ca.gov**

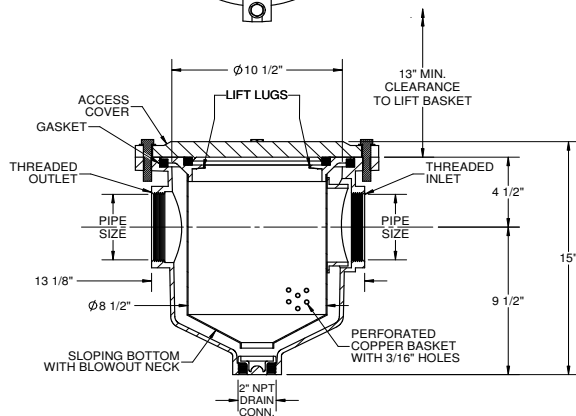
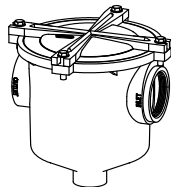
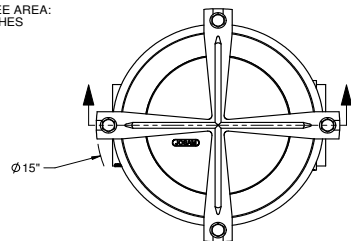
**SPECIFICATION:**

JOSAM 61070 SERIES CAST IRON SOLIDS INTERCEPTOR WITH ACID RESISTING COATING, TOP ACCESS, IN-LINE TYPE, THREADED CONNECTIONS, 2" THREADED DRAIN OR BLOW-OFF CONNECTION, REMOVABLE PERFORATED COPPER BASKET WITH CONICAL SOLID BOTTOM, GASKETED CAST IRON SUPPORT RIM AND GASKETED COVER SEALED ON BASKET SUPPORT RIM SECURED WITH HEX HEAD BOLTS.

**SOLIDS INTERCEPTOR  
TOP ACCESS IN-LINE TRAP**

SERIES **61070**

BASKET FREE AREA:  
85.0 SQ. INCHES



-4	GALVANIZED CAST IRON PARTS
-15	STAINLESS STEEL BASKET
-86	FLAT BOTTOM BASKET

PIPE SIZE
2"
3"
4"

DATE OF LAST CHANGE: 10/31/14

DIMENSIONS ARE SUBJECT TO MANUFACTURERS TOLERANCES AND CHANGE WITHOUT NOTICE. WE CAN ASSUME NO RESPONSIBILITY FOR USE OF SUPERSEDED OR VOID DATA.

**JOSAM COMPANY**  
MICHIGAN CITY, INDIANA

NOTES

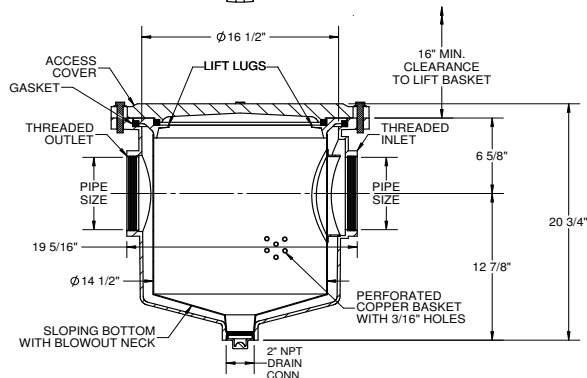
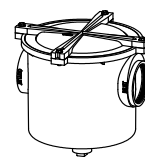
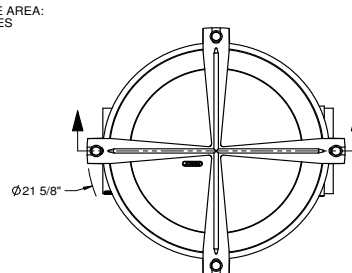
**SPECIFICATION:**

JOSAM 61080 SERIES CAST IRON SOLIDS INTERCEPTOR WITH ACID RESISTING COATING, TOP ACCESS, IN-LINE TYPE, THREADED CONNECTIONS, 2" THREADED DRAIN OR BLOW-OFF CONNECTION, REMOVABLE PERFORATED COPPER BASKET WITH CONICAL SOLID BOTTOM, GASKETED CAST IRON SUPPORT RIM AND GASKETED COVER SEALED ON BASKET SUPPORT RIM SECURED WITH HEX HEAD BOLTS.

**SOLIDS INTERCEPTOR  
TOP ACCESS IN-LINE TRAP**

SERIES **61080**

BASKET FREE AREA:  
250 SQ. INCHES



-4	GALVANIZED CAST IRON PARTS
-15	STAINLESS STEEL BASKET
-86	FLAT BOTTOM BASKET

PIPE SIZE
4"
5"
6"

DATE OF LAST CHANGE: 11/6/14

DIMENSIONS ARE SUBJECT TO MANUFACTURERS TOLERANCES AND CHANGE WITHOUT NOTICE. WE CAN ASSUME NO RESPONSIBILITY FOR USE OF SUPERSEDED OR VOID DATA.

**JOSAM COMPANY**  
MICHIGAN CITY, INDIANA

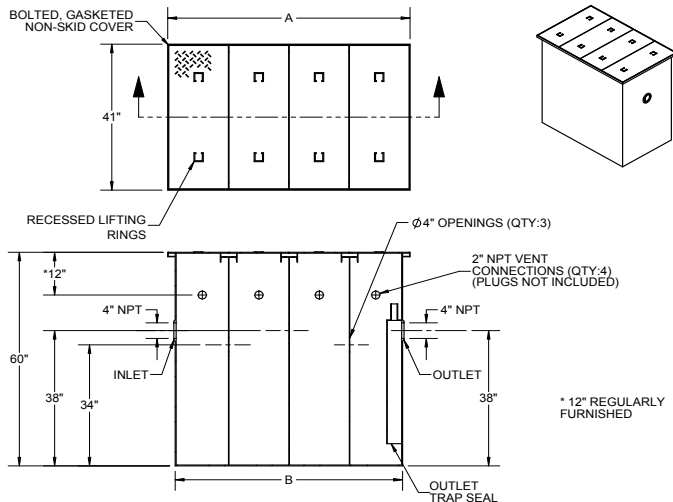
NOTES

**SPECIFICATION:**

JOSAM 61090 SERIES COATED STEEL SAND & SEDIMENT INTERCEPTOR, HIGH VOLUME ON FLOOR, PARTIALLY RECESSED OR FLUSH-WITH-FLOOR TYPE, THREADED CONNECTIONS, FLAT BOTTOM AND GASKETED NON-SKID COVER.

**SAND & SEDIMENT INTERCEPTOR**

SERIES

**61090**

TYPE	CAPACITY (CUBIC FEET)	SIZE (GALLONS)	A	B
61091	45	340	65	60
61092	54	400	77	72
61093	72	540	101	96
61094	81	610	113	108
61095	90	670	125	120
61096	108	810	149	144
61097	135	1010	185	180

-EXT	EXTENSION (SPECIFY DIMENSION)
-HD	HEAVY DUTY COVERS

DATE OF LAST CHANGE: 04/27/15

DIMENSIONS ARE SUBJECT TO MANUFACTURERS TOLERANCES AND CHANGE WITHOUT NOTICE. WE CAN ASSUME NO RESPONSIBILITY FOR USE OF SUPERSEDED OR VOID DATA.

**JOSAM COMPANY**  
MICHIGAN CITY, INDIANA

NOTES

**SPECIFICATION:**

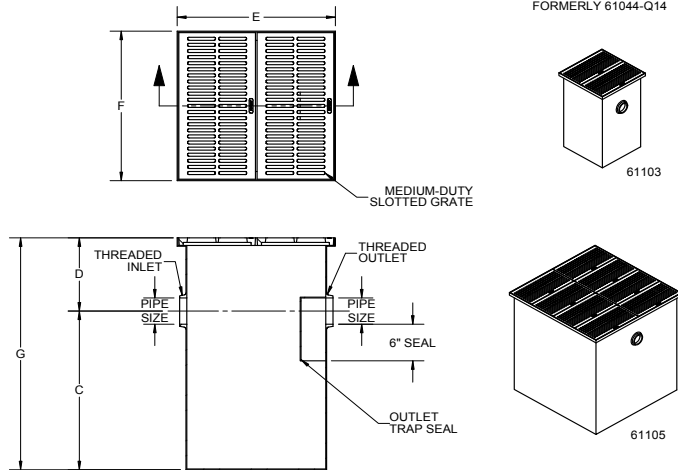
JOSAM SERIES 61100 SERIES SAND INTERCEPTOR, WHITE EPOXY COATED, TOP ACCESS SLOTTED GRATE, OUTLET TRAP SEAL AND THREADED CONNECTIONS.

**SAND INTERCEPTOR**

SERIES

**61100**

FORMERLY 61044-Q14



TYPE	# OF GRATES	GPM FLOW	PIPE SIZE	D	C	G	E	F
61103	2	20	4	12	26	38	24-3/4	24-1/2
61104	4	50	4	12	26	38	49-1/4	24-1/2
61105	8	150	4	12	38	50	49-1/4	48-3/4
61106	12	250	6	12	39	51	73-3/4	48-3/4
61107	20	500	6	12	51	63	122-3/4	48-3/4

-HD	SOLID HEAVY DUTY DIAMOND PLATE COVER
-EXT	EXTENSION (SPECIFY "D" AND "G" DIMENSION)

△ SEPARATE SUBMITTAL FOR THIS OPTION AVAILABLE

DATE OF LAST CHANGE: 4/24/15

DIMENSIONS ARE SUBJECT TO MANUFACTURERS TOLERANCES AND CHANGE WITHOUT NOTICE. WE CAN ASSUME NO RESPONSIBILITY FOR USE OF SUPERSEDED OR VOID DATA.

**JOSAM COMPANY**  
MICHIGAN CITY, INDIANA

NOTES



**WARNING:** Cancer and Reproductive Harm - [www.p65warnings.ca.gov](http://www.p65warnings.ca.gov)



**SPECIFICATIONS:**

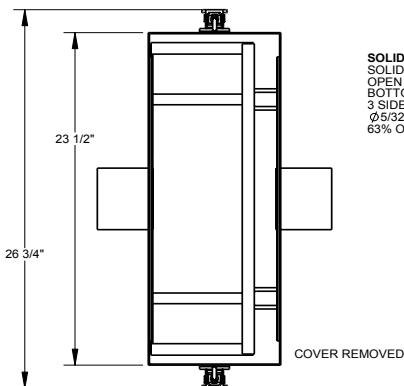
JOSAM 61300 SERIES STAINLESS STEEL SOLIDS INTERCEPTOR, MAY BE ON-FLOOR, PARTIALLY RECESSED, OR BELOW GRADE IN VAULTED ENCLOSURE, WITH NO-HUB CONNECTIONS, GASKETED COVER AND REMOVABLE SOLIDS COLLECTION BASKET

**SOLIDS INTERCEPTOR**

S.S. 3" AND 4" PIPE DIA.

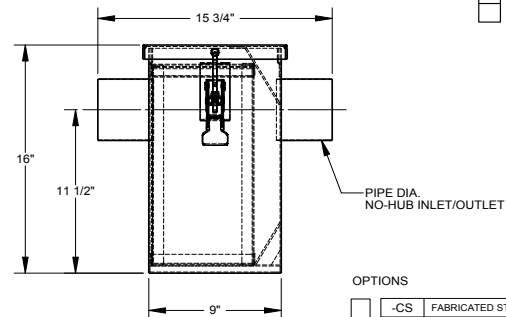
SERIES

**61300**



**SOLIDS BASKET**  
SOLID FRONT  
OPEN TOP  
OPEN BOTTOM AND  
3 SIDES PERF SS  
Ø5/32" HOLES  
63% OPEN AREA

PART NO.	PIPE DIA.
61303	3"
61304	4"



OPTIONS

☐ -CS FABRICATED STEEL, ACID-RESISTANT COATING

DATE OF LAST CHANGE: 04/01/11  
DIMENSIONS ARE SUBJECT TO MANUFACTURERS' TOLERANCES AND CHANGE WITHOUT NOTICE. WE CAN ASSUME NO RESPONSIBILITY FOR USE OF SUPERSEDED OR VOID DATA.

**JOSAM COMPANY**  
MICHIGAN CITY, INDIANA

NOTES

**SPECIFICATION:**

JOSAM SERIES 61402 STAINLESS STEEL (TYPE 304) SOLIDS INTERCEPTOR - DRAWER TYPE, ADJUSTABLE HEIGHT, WITH LATCHED AND GASKETED SOLIDS BASKET, AND 2" NO-HUB INLET AND OUTLET CONNECTIONS ON BOTH SIDES.

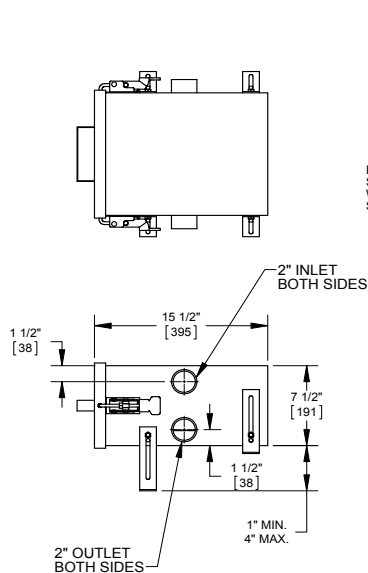
**SOLIDS INTERCEPTOR**

DRAWER TYPE

SERIES

**61402**

FLOW RATE: 35 GPM



**DRAWER TYPE**  
SOLIDS BASKET  
WITH Ø5/32" [4] PERF.  
SIDES AND BOTTOM

OPTIONS:

<input type="checkbox"/> -T	THREADED CONNECTIONS
<input type="checkbox"/> -316	TYPE 316L MATERIAL

DATE OF LAST CHANGE: 07/02/12  
DIMENSIONS ARE SUBJECT TO MANUFACTURERS' TOLERANCES AND CHANGE WITHOUT NOTICE. WE CAN ASSUME NO RESPONSIBILITY FOR USE OF SUPERSEDED OR VOID DATA.

**JOSAM COMPANY**  
MICHIGAN CITY, INDIANA

NOTES

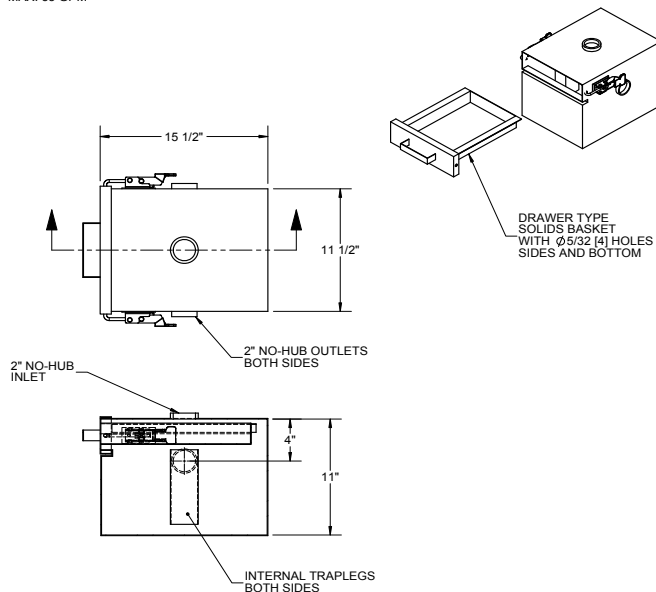
**SPECIFICATION:**

JOSAM SERIES 61500 STAINLESS STEEL (TYPE 304) SOLIDS INTERCEPTOR - DRAWER TYPE WITH LATCHED AND GASKETED SOLIDS BASKET AND 2" CONNECTIONS.

**SOLIDS INTERCEPTOR  
DRAWER TYPE, TOP INLET**

SERIES **61500**

MAX. 35 GPM

**OPTIONS:**

-T	NPT THREADED CONNECTIONS
-316	TYPE 316L MATERIAL

DATE OF LAST CHANGE: 05/21/13

DIMENSIONS ARE SUBJECT TO MANUFACTURERS TOLERANCES AND CHANGE WITHOUT NOTICE. WE CAN ASSUME NO RESPONSIBILITY FOR USE OF SUPERSEDED OR VOID DATA.

**JOSAM COMPANY**  
MICHIGAN CITY, INDIANA

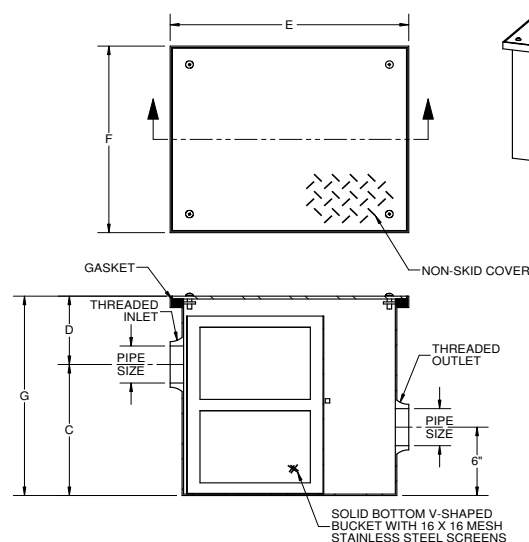
NOTES

**SPECIFICATION:**

JOSAM 61800 SERIES LINT INTERCEPTOR WITH ACID RESISTANT COATING, NON SKID COVER, GALVANIZED STEEL BUCKET WITH STAINLESS STEEL SCREENS AND THREADED CONNECTIONS.

**SOLIDS INTERCEPTOR  
LINT TRAP**

SERIES **61800**



	TYPE NO.	FLOW RATE (GPM)	MAX NO. OF WASHERS	PIPE SIZE	C	D	E	F	G
	61805	70	7	3	12	6	20	17	18
	61806	200	20	4	14	6	22	18	20
	61807	300	30	6	16	6	25	20	22
	61808	400	40	6	18	6	29	22	24

-EXT EXTENSION 6" STANDARD, OR SPECIFY HEIGHT  
SPECIFY DIMENSIONS "D" AND "G"

\* WILL INCREASE ACCORDINGLY WITH NEW "D" DIMENSION

DATE OF LAST CHANGE: 11/7/14

DIMENSIONS ARE SUBJECT TO MANUFACTURERS TOLERANCES AND CHANGE WITHOUT NOTICE. WE CAN ASSUME NO RESPONSIBILITY FOR USE OF SUPERSEDED OR VOID DATA.

**JOSAM COMPANY**  
MICHIGAN CITY, INDIANA

NOTES

**WARNING:** Cancer and Reproductive Harm - [www.p65warnings.ca.gov](http://www.p65warnings.ca.gov)