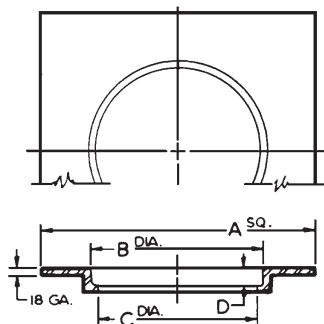
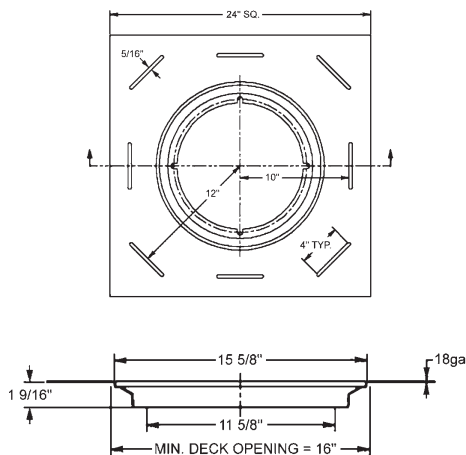


(-2) DRAIN RECEIVER



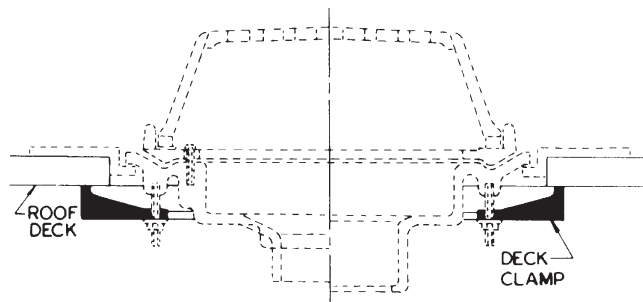
(-CR) CLAMPING DRAIN RECEIVER



DRAIN RECEIVER DIMENSIONS

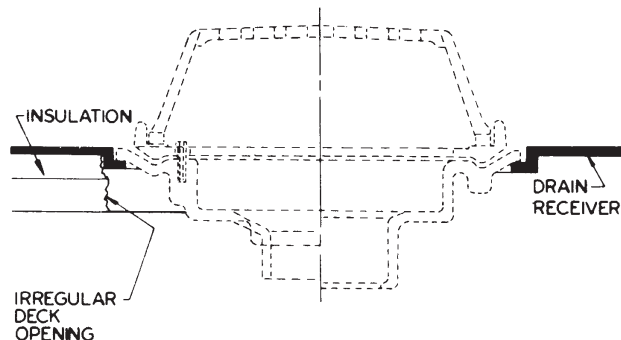
SERIES NO.	A	B	C	D
21500	24	15-1/2	14-9/16	21/64
22010	20	12-1/4	11-1/2	21/64
22080	16	9-1/2	7-1/2	47/64

DRAIN SERIES	APPLICABLE DRAIN RECEIVER				
	OUTLET SIZE				
	2" - 4"	5"	6"	8"	10"
21500	21500 21500-CR	21500 21500-CR	21500 21500-CR	21500 21500-CR	21500 21500-CR
22010	22010	22010	22010		
22080	22080				
23710	22010	22010	22010		
23730	22080				
23740	22080				
25500	21500 21500-CR	21500 21500-CR	21500 21500-CR	21500 21500-CR	
25520	22010	22010	22010		
25540	22080				
28600	21500 21500-CR	21500 21500-CR	21500 21500-CR	21500 21500-CR	



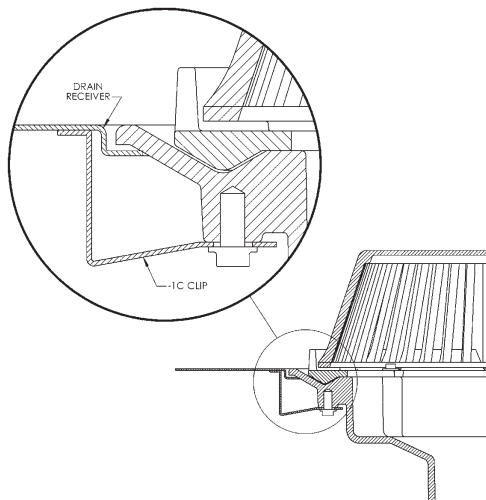
(-1) OPTION, DECK CLAMP

The deck clamp is the most dependable means by which the roof drain can be secured to the roof deck to insure a permanent bond that will prevent damage of flashing and membrane materials caused by movement and vibration. It is secured to the underside of the drain body with heavy-duty threaded rods, which provide adjustment to accommodate various slab or deck thicknesses, and is drawn tightly in place against the underside of the deck to form a positive union.



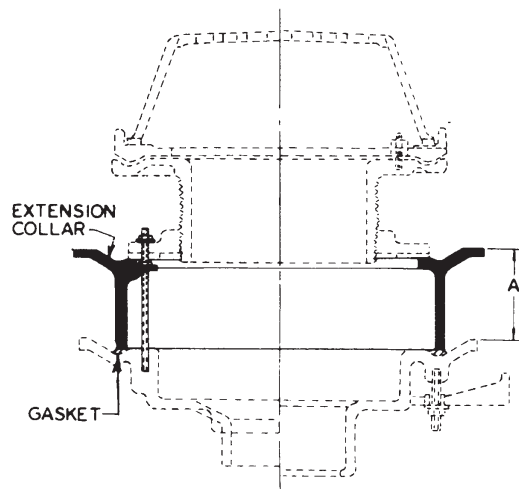
(-2) OPTION, DRAIN RECEIVER

The drain receiver is recommended for use in all roof drain installations regardless of deck construction and is of particular importance when used in conjunction with drains installed in decks where support is on insulation. The drain receiver is produced in heavy gauge steel, coated for protection, and embodies a recessed flange to carry the drain, and a wide flange to support the assembly on the roof. The drain receiver distributes the weight of the roof drain evenly over the deck and compensates for irregular and misaligned deck openings.



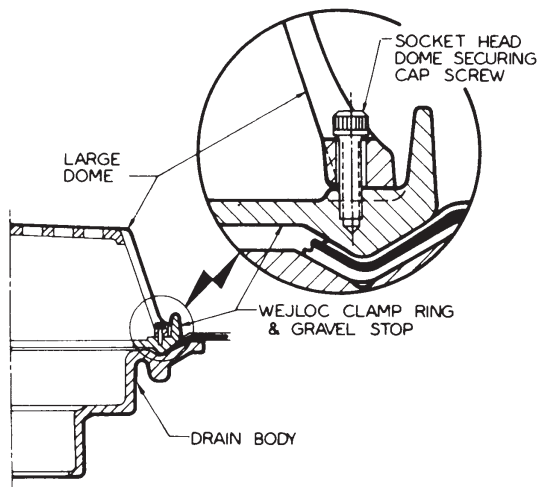
(-3C) OPTION, DRAIN RECEIVER & DRAIN RECEIVER CLIPS

Includes (-2) Optional Drain Receiver and clips, to secure the roof drain body directly to the receiver. Simply position the drain outlet face up, position drain receiver over the drain body and attach the four receiver clips with the hardware provided. Invert body and install the assembly into the deck opening. If necessary, secure assembly to the metal deck with self-tapping screws (by others).



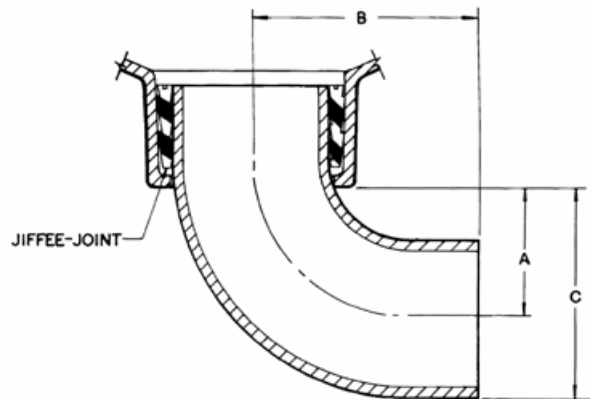
(-10) OPTION, FIXED EXTENSION COLLAR USED WITH LEVELEZE® DRAINS

For roof or deck construction where base slab to surface height is greater than can be accommodated with the standard LEVELEZE® collar, the (-10) Fixed Extension Collar "A" is used along with the (-AE) LEVELEZE® assembly. These collars can be used in multiples where extension requirements dictate. The Fixed Extension Collar can be cast in increments of 1, 2, 3 and 4 inches. Shorter or longer dimensions are available by cutting or stacking extensions



(-VP) OPTION, VANDAL-PROOF SECURED DOME

Where vandalism or mischievous activity is anticipated, it is advisable to specify vandal-proof domes on roof drains. All JOSAM precision-molded plastic large domes incorporate bayonet locking devices as standard equipment; however, when specified vandal-proof, they are further secured with screws to insure permanence of assembly. Other types of domes can also be vandal-proofed when specified.



PIPE SIZE	A	B	C
2	2-1/2	4-1/2	3-5/8
3	2-13/16	5	4-1/2
4	3-1/2	5-1/2	5-11/16
5	4-5/16	6-1/2	6-15/16
6	4-13/16	7	7-15/16

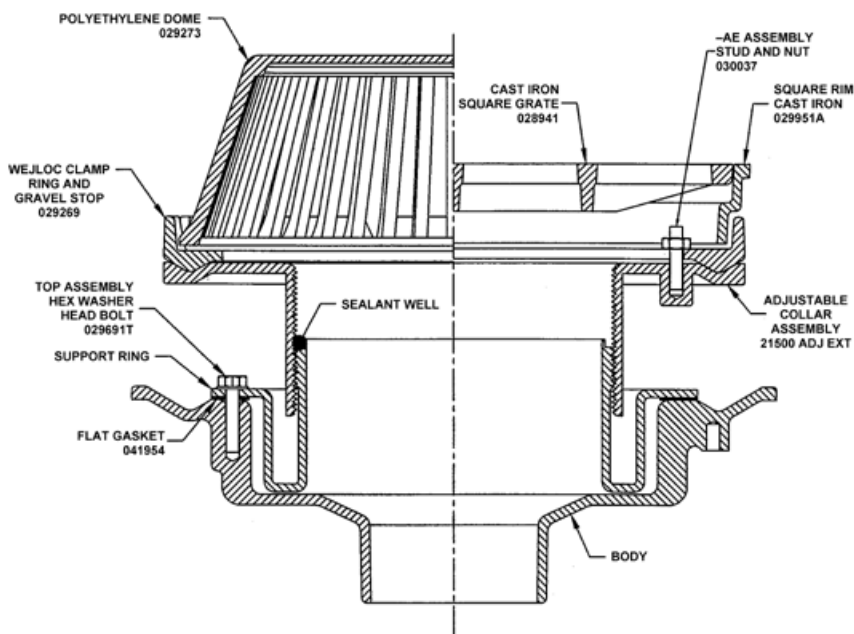
(-66) NO-HUB SIDE OUTLET

This option converts JOSAM bottom outlet inside caulk drains to no-hub side outlet drains using a 90° no-hub quarter bend and a JIFFEE-JOINT Gasket.



WARNING: Cancer and Reproductive Harm - www.p65warnings.ca.gov

STANDARD ADJUSTABLE LEVEZEZ ASSEMBLY (-AE)



INSTALLATION INSTRUCTIONS

- 1.) PLACE FLAT GASKET WITH HOLES ALIGNED ON DRAIN BODY
- 2.) SECURE SUPPORT RING ON TOP OF GASKET WITH 3/8" WASHER HEAD BOLTS.
- 3.) ATTACH WEJLOC CLAMP RING TO ADJUSTABLE COLLAR WITH 3/8" STUDS, SECURE CLAMP RING DOWN WITH 3/8" NUTS AND WASHERS

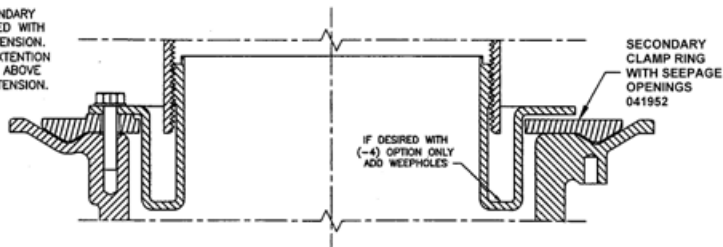
USING #21500 SEAL KIT 3 SEALING INSTRUCTIONS

- 1.) SURFACES MUST BE CLEAN AND DRY
- 2.) COMPLETELY FILL THE SEALANT WELL BETWEEN ADJUSTABLE EXTENSION AND THE SUPPORT RING TO FORM WATERPROOF SEAL.
- 3.) SEALANT SKINS IN 5 MINUTES, DRIES TO TOUCH IN 1 HOUR CURES & BONDS IN 24 HOURS

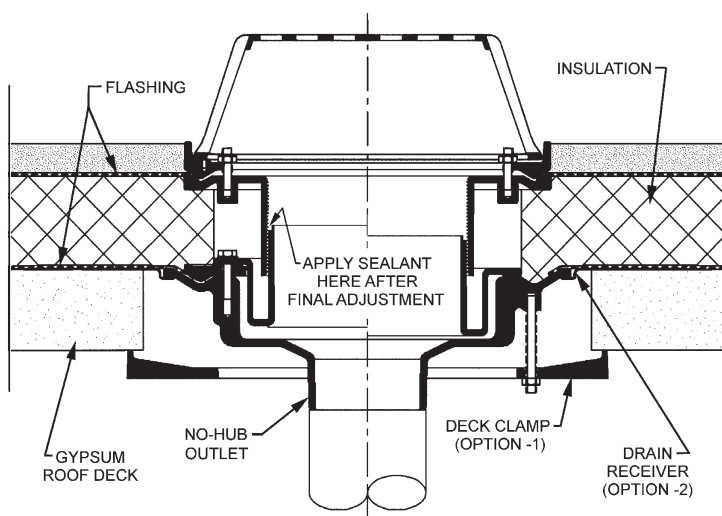
FAILURE TO FOLLOW INSTRUCTIONS MAY RESULT IN LEAKAGE.

ADJUSTABLE LEVEZEZ ASSEMBLY WITH OPTIONAL (-4) SECONDARY CLAMP RING

WHEN (-4) SECONDARY CLAMP RING IS USED WITH A (-10) FIXED EXTENSION, THE (-10) FIXED EXTENSION MUST BE LOCATED ABOVE THE (-AE) ADJ. EXTENSION.

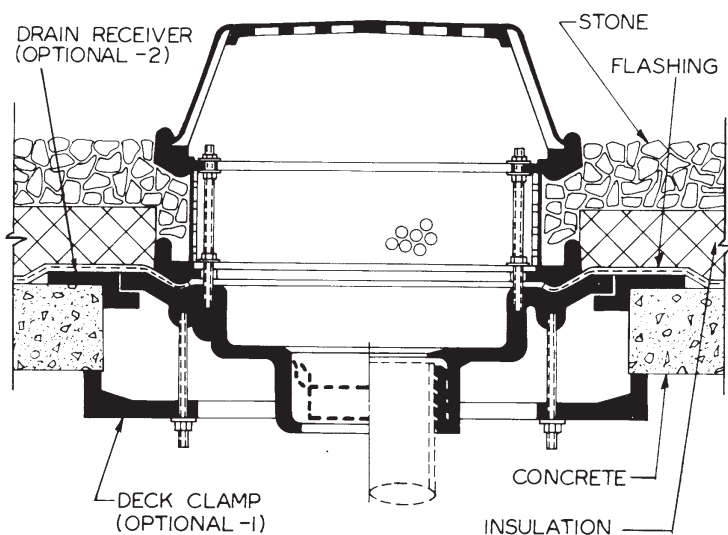


GYPSUM ROOF DECK SYSTEM



21500-AE Series

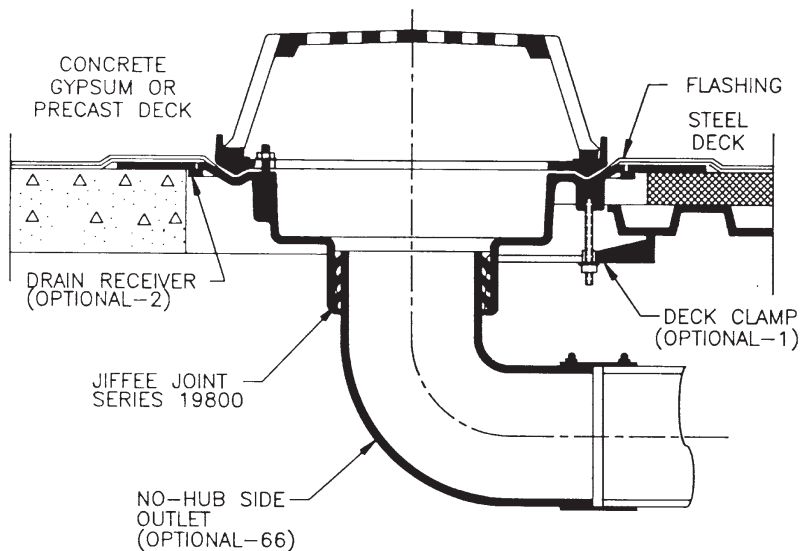
TYPICAL INSULATED ROOF MEMBRANE SYSTEM



21500-IRMA Series

PRECAST CONCRETE DECK

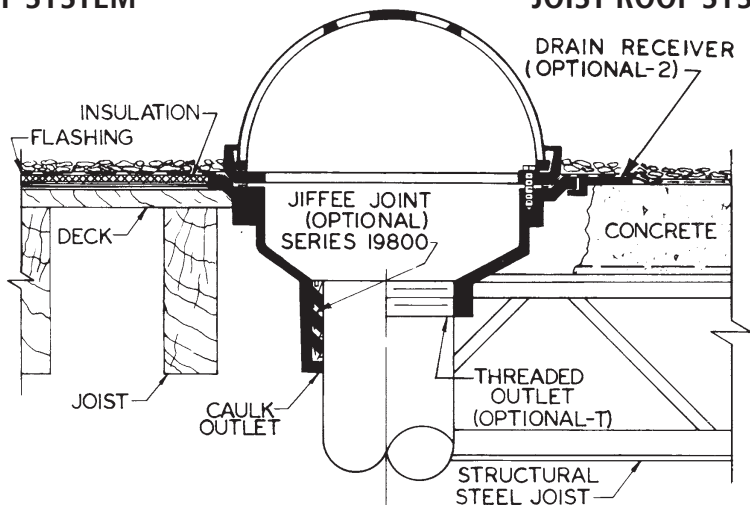
STEEL ROOF DECK



21500-66 Series

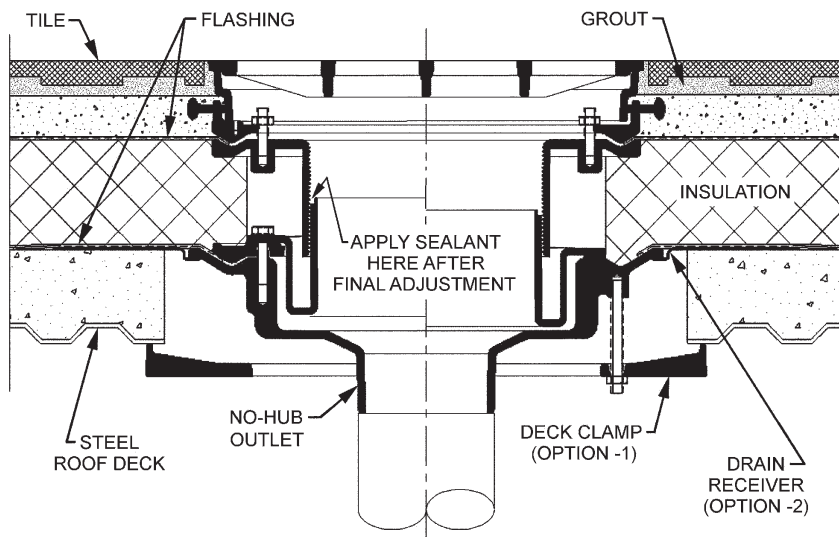
WOOD JOIST ROOF SYSTEM

STRUCTURAL STEEL JOIST ROOF SYSTEM



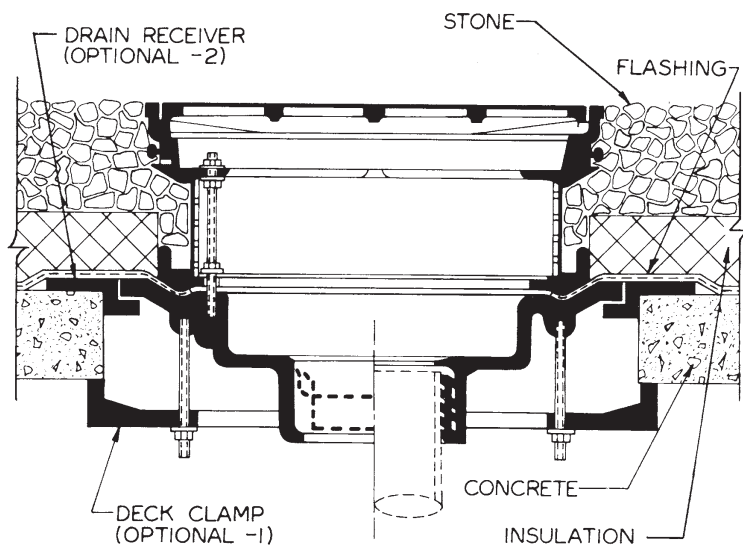
22010 Series

STEEL-SUPPORTED BUILT-UP ROOF DECK SYSTEM



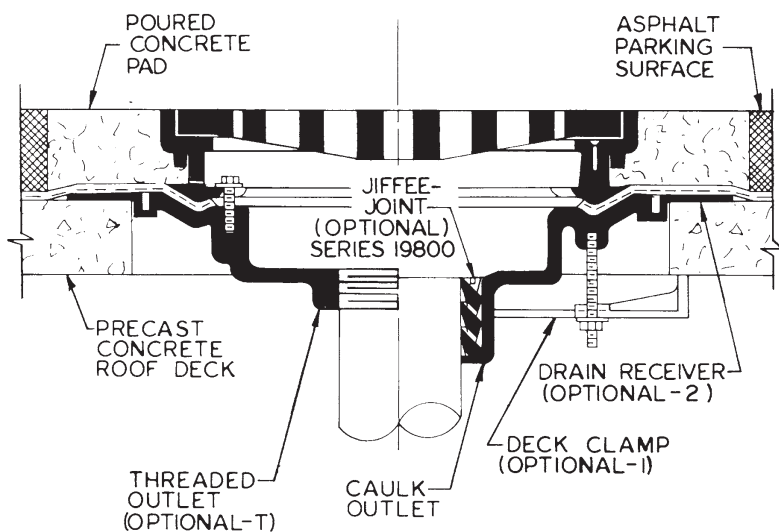
23500-AE Series Promenade Roof Drain

TYPICAL INSULATED ROOF MEMBRANE SYSTEM



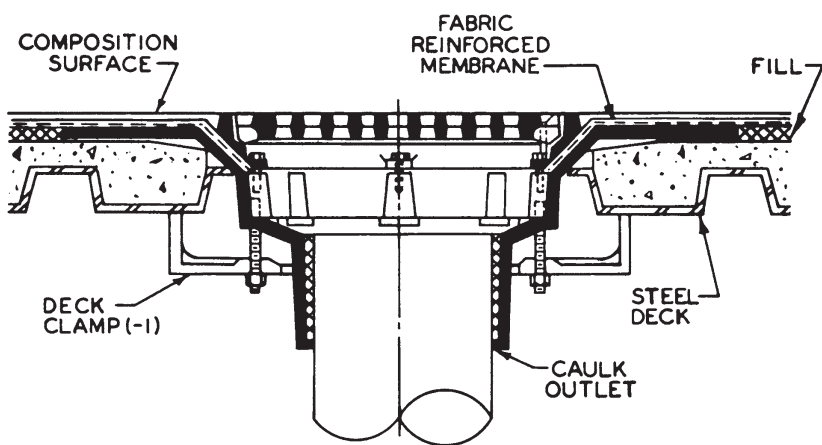
23500-IRMA Series

CONCRETE DECK WITH ASPHALT PARKING SURFACE

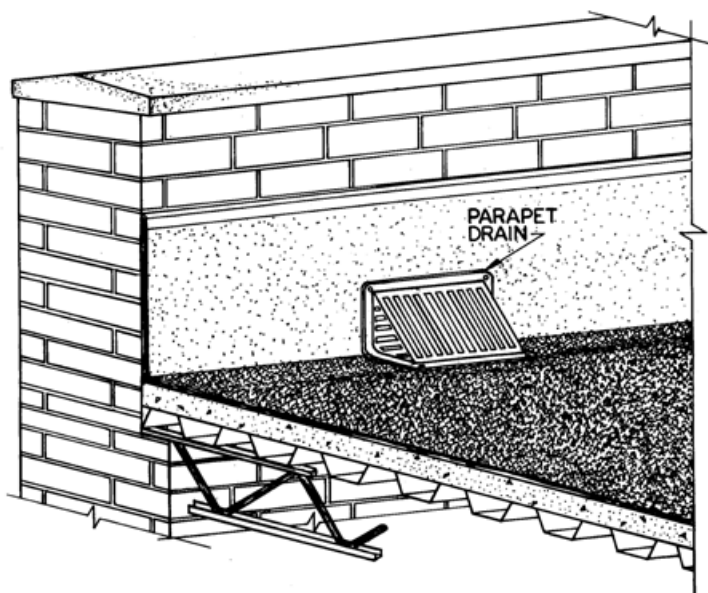


23510 Series Promenade Roof Drain

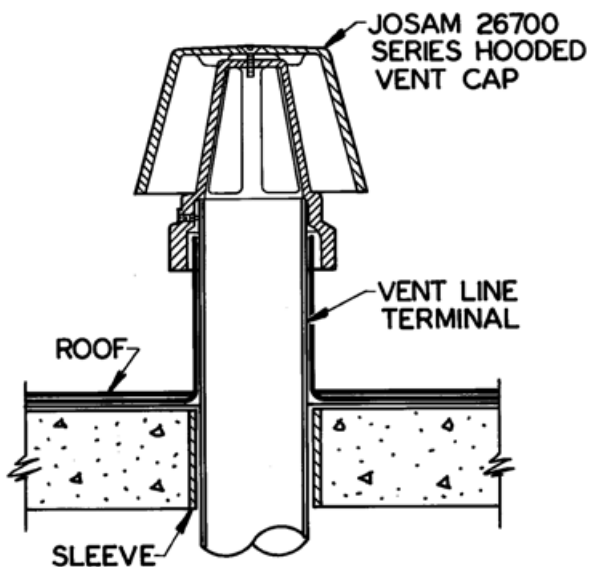
STEEL DECK CONCRETE SYSTEM WITH COMPOSITION MEMBRANE SURFACE



24020 Series SUPER-FLO® Composition Deck Drain



24700 Parapet Overflow Drain

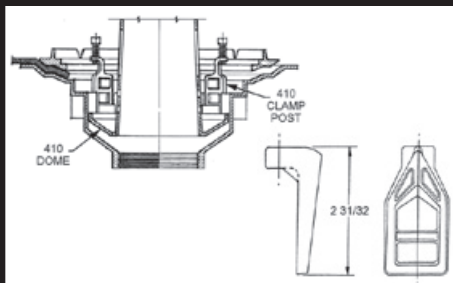


26700 Series Vandal-Proof Vent Cap

Replacement Parts

Josam introduced the first non-puncturing clamping device for roof drains in the 1920's. By casting lugs into the body and flat tabs onto the clamp ring, the membrane could be clamped between the drain body and clamp ring using the 410 Clamp Posts. The original design can be identified in the field by the use of these clamp posts to secure the body to the clamp ring. The 410 and 4110 Series replacement parts below are for use with these original drains. Please use these drawings to check dimensions carefully as replacement parts are not returnable.

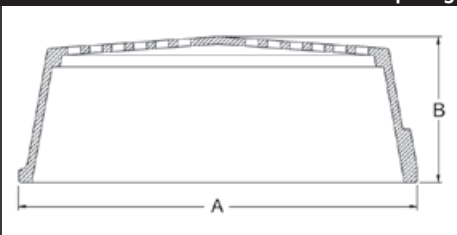
410 CLAMP POST PACK



Part No.	Description
010245	Clamp Post Pack (Four to a Pack)

4110 C.I. DOME

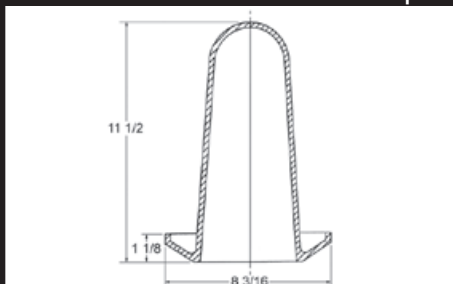
Use with 410 Clamp Ring



Type	Part No.	A	B
4114 O.S.	029240	12-1/4	5-3/8
4116	029350	14-1/6	5-3/8
4118	029420T	16-3/8	6-13/32

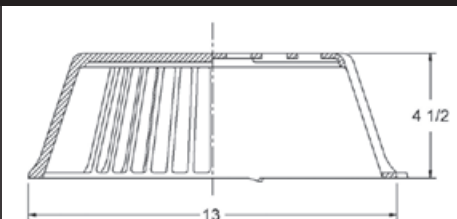
410 C.I. DOME

Use with 410 Clamp Ring



Type	Part No.
414 N.S.	010320T

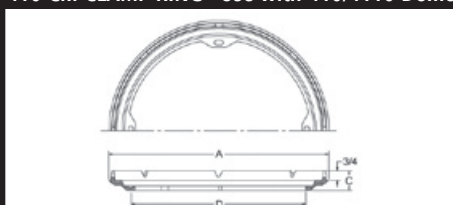
21500 DOME



Part No.	Description
029273	Polypropylene Dome
029279F	Cast Iron Dome
029275T	Aluminum Dome

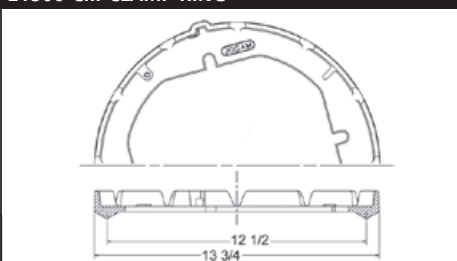
410 C.I. CLAMP RING

Use with 410/4110 Domes



Type	Part No.	A	C	D	Use with Domes
414	010350	13-3/4	1-7/16	10-7/8	414 N.S., 4114 O.S.
415	010520	15-1/4	1-9/16	11-11/16	4116 O.S.
416	010660	15-3/4	1-1/2	12-3/4	4116 O.S.
418	010800T	17-3/16	1-3/8	14-11/16	4118

21500 C.I. CLAMP RING



Part No.	Description
029269F	21504 Cast Iron Clamp Ring
029691T	21500 Clamp Ring Hardware Pack

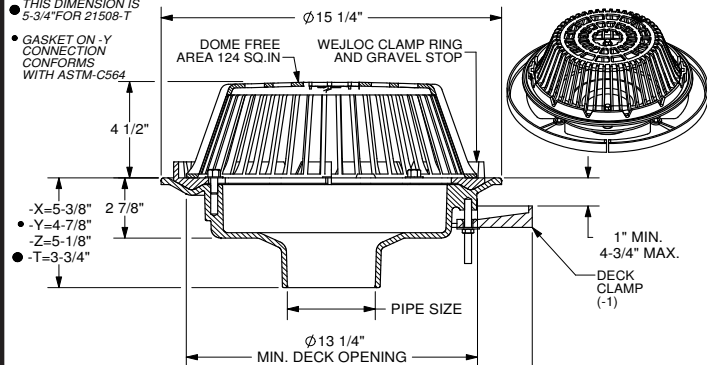
SPECIFICATION:

JOSAM 21500 SERIES COATED CAST IRON ROOF DRAIN, LARGE POLYPROPYLENE LOCKING DOME, WEJLOC® NON-PUNCTURING CLAMP RING WITH INTEGRAL GRAVEL STOP, LARGE SUMP WITH WIDE ROOF FLANGE AND BOTTOM OUTLET.

**ROOF DRAIN
LARGE SUMP**SERIES **21500**

● THIS DIMENSION IS 5-3/4" FOR 21500-T

● GASKET ON -Y CONNECTION CONFORMS WITH ASTM-C564



▼ SEPARATE SUBMITTAL FOR THIS OPTION AVAILABLE

△ -16 & -17 CANNOT BE FURNISHED TOGETHER

2"	PIPE SIZE	-2	DRAIN RECEIVER
3"	PIPE SIZE	-3	DECK CLAMP ASY. AND DRAIN RECEIVER
4"	PIPE SIZE	-3C	DRAIN RECEIVER AND DRAIN RECEIVER CLIPS
5"	PIPE SIZE	-4	SECONDARY FLASHING CLAMP (-AE ONLY)
6"	PIPE SIZE	▼ -6	EXTRA WIDE FLANGE DRAIN BODY (2"-6"; -X OUTLET ONLY)
8"	PIPE SIZE	-10	FIXED EXT. COLLAR, CAST IRON (SPECIFY HT. 4" STANDARD)
10"	PIPE SIZE (NO-HUB ONLY)	-10-20	FIXED EXT. COLLAR, GALV. (SPECIFY HT. 4" STANDARD)
		▼ -16	INTERNAL WATERGUARD (2" THRU 6" OUTLETS ONLY)
		-16GLV	INTERNAL WATERGUARD GALVANIZED STEEL (2"-6" OUTLETS ONLY)
		▼ -17	2" HIGH SOLID CLAMPING COLLAR
-X	INSIDE CAULK OUTLET	-19	CLAMP COLLAR W/PERFORATED STAINLESS GRAVEL GUARD
-Y	HUB OUTLET W/GASKET (2", 3" & 4" SIZES ONLY)	-20	GALV. CAST IRON PARTS
-Z	NO-HUB SPIGOT OUTLET	-21	GALV. CAST IRON DOME ONLY
-T	THREADED OUTLET	-22	CAST IRON DOME
		-23	ROUGH BRONZE DOME
▼ -AE	THREADED LEVELLEEZ® ADJ. EXT.	-26	ALUMINUM DOME
▼ -AER	ADJ. EXT. USING THREADED RODS	-33	STAINLESS STEEL MESH-COVERED DOME
▼ -IRMA	PERFORATED STAINLESS STEEL EXT.	-66	NO-HUB SIDE OUTLET (2" THRU 6" OUTLETS ONLY)
-CR	CLAMPING DRAIN RECEIVER (MIN. DECK OPENING Ø16")		
-1	DECK CLAMP ASY.	-VP	VANDAL-PROOF DOME
-1C	DRAIN RECEIVER CLIPS (MIN. DECK OPENING Ø16")		

DATE OF LAST CHANGE: 01/23/14

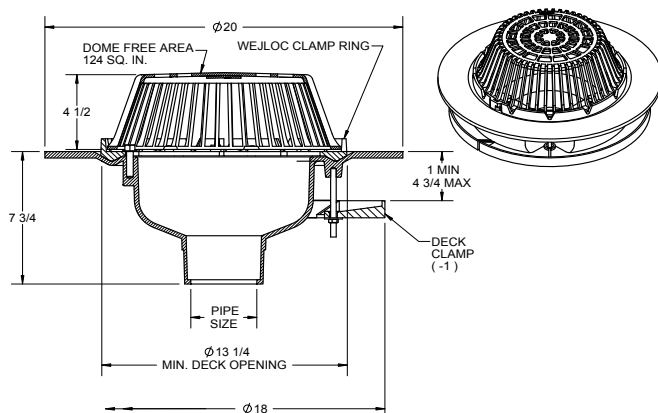
DIMENSIONS ARE SUBJECT TO MANUFACTURERS TOLERANCES AND CHANGE WITHOUT NOTICE. WE CAN ASSUME NO RESPONSIBILITY FOR USE OF SUPERSEDED OR VOID DATA.

JOSAM COMPANY
MICHIGAN CITY, INDIANA

NOTES

SPECIFICATION:

JOSAM 21500-6 SERIES COATED CAST IRON DRAIN, LARGE POLYPROPYLENE LOCKING DOME, WEJLOC® NON-PUNCTURING CLAMP RING WITH INTEGRAL GRAVEL STOP, LARGE SUMP WITH EXTRA-WIDE ROOF FLANGE AND BOTTOM OUTLET INSIDE CAULK CONNECTION.

**ROOF DRAIN
LARGE SUMP, WIDE FLANGE**SERIES **21500-6**

** -10 EXTENSION 4" STANDARD

** -16 & -17 CANNOT BE FURNISHED TOGETHER

	2"	PIPE SIZE	-16"	INTERNAL WATERGUARD
	3"	PIPE SIZE	-17"	2" HIGH SOLID CLAMPING COLLAR
	4"	PIPE SIZE	-19	CLAMP COLLAR W/PERF. STAINLESS GRAVEL GUARD
	5"	PIPE SIZE	-20	GALVANIZED CAST IRON PARTS
	6"	PIPE SIZE	-21	GALVANIZED CAST IRON DOME ONLY
			-22	CAST IRON DOME
X	-X	INSIDE CAULK OUTLET	-23	ROUGH BRONZE DOME
X	-6	EXTRA WIDE FLANGE DRAIN BODY	-26	ALUMINUM DOME
	-AE	THREADED LEVELLEEZ® ADJ. EXT.	-33	STAINLESS STEEL MESH-COVERED DOME
	-IRMA	PERFORATED STAINLESS STEEL EXT.	-66	NO-HUB OUTLET
			-VP	VANDAL-PROOF DOME
	-1	DECK CLAMP ASSEMBLY		
	-10	FIXED EXT. COLLAR, CAST IRON (SPECIFY HEIGHT **)		
	-10-20	FIXED EXT. COLLAR, GALVANIZED (SPECIFY HEIGHT **)		

DATE OF LAST CHANGE: 5/04/15

DIMENSIONS ARE SUBJECT TO MANUFACTURERS TOLERANCES AND CHANGE WITHOUT NOTICE. WE CAN ASSUME NO RESPONSIBILITY FOR USE OF SUPERSEDED OR VOID DATA.

JOSAM COMPANY
MICHIGAN CITY, INDIANA

NOTES

⚠ WARNING: Cancer and Reproductive Harm - www.p65warnings.ca.gov

SPECIFICATION:

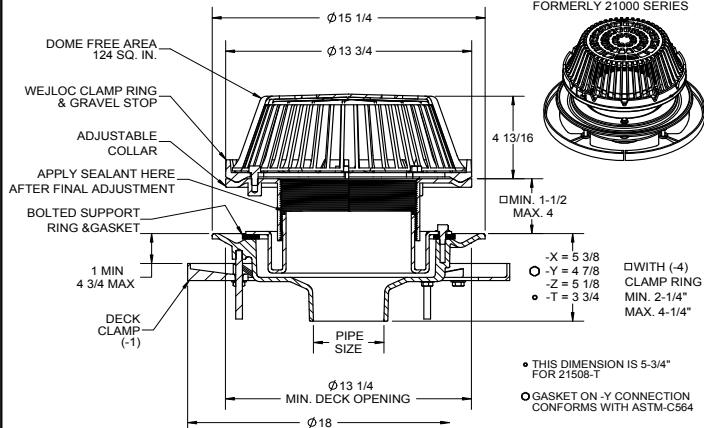
JOSAM 21500-AE SERIES COATED CAST IRON LEVELEZE® ROOF DRAIN, LARGE POLYPROPYLENE LOCKING DOME, WEJLOC® NON-PUNCTURING CLAMP RING WITH INTEGRAL GRAVEL STOP, BOLTED SUPPORT RING, ADJUSTABLE TOP, LARGE SUMP WITH WIDE ROOF FLANGE AND BOTTOM OUTLET.

ROOF DRAIN

W/ LEVELEZE® ADJUSTABLE EXTENSION

SERIES **21500-AE**

FORMERLY 21000 SERIES



2"	PIPE SIZE
3"	PIPE SIZE
4"	PIPE SIZE
5"	PIPE SIZE
6"	PIPE SIZE
8"	PIPE SIZE
10"	PIPE SIZE (NO-HUB ONLY)
X	-AE THREADED LEVELEZE® ADJ. EXT.
-CR	CLAMPING DRAIN RECEIVER (MIN. DECK OPENING Ø16")
-VP	SECURED DOME
-1	DECK CLAMP ASSEMBLY
-1C	DRAIN RECEIVER CLIPS (MIN. DECK OPENING Ø16")
-2	DRAIN RECEIVER
-3	DECK CLAMP ASY. AND DRAIN RECEIVER
-3C	DRAIN RECEIVER AND DRAIN RECEIVER CLIPS
-4	SECONDARY FLASHING CLAMP (-AE ONLY)

-6	EXTRA WIDE FLANGE DRAIN BODY (-X OUTLET ONLY)
-10	FIXED EXT. COLLAR, CAST IRON, 4" STD. (SPECIFY HEIGHT)
-10-20	FIXED EXT. COLLAR, GALVANIZED, 4" STD. (SPECIFY HEIGHT)
-16*	INTERNAL WATERGUARD (2" THRU 6" OUTLETS ONLY)
-17*	2" HIGH SOLID CLAMPING COLLAR
-19	CLAMP COLLAR W/PERF. STAINLESS GRAVEL GUARD
-20	GALVANIZED CAST IRON PARTS
-21	GALVANIZED CAST IRON DOME ONLY
-22	CAST IRON DOME
-23	ROUGH BRONZE DOME
-26	ALUMINUM DOME
-33	STAINLESS STEEL MESH-COVERED DOME
-66	NO-HUB SIDE OUTLET (2" THRU 6" OUTLETS ONLY)
-T	THREADED OUTLET
-X	INSIDE CAULK OUTLET
-Y	HUB OUTLET W/GASKET (2", 3" & 4" SIZES ONLY)
-Z	NO-HUB SPIGOT OUTLET

*-16 & -17 CANNOT BE FURNISHED TOGETHER

DATE OF LAST CHANGE: 5/04/15

DIMENSIONS ARE SUBJECT TO MANUFACTURERS TOLERANCES AND CHANGE WITHOUT NOTICE. WE CAN ASSUME NO RESPONSIBILITY FOR USE OF SUPERSEDED OR VOID DATA.

JOSAM COMPANY
MICHIGAN CITY, INDIANA

NOTES

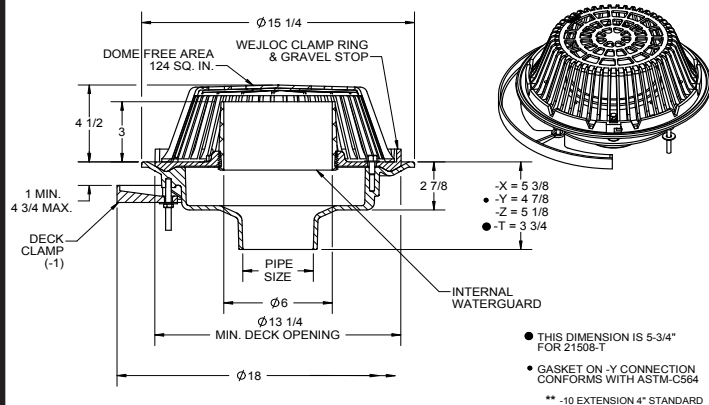
SPECIFICATION:

JOSAM 21500-16 SERIES COATED CAST IRON ROOF DRAIN, INTERNAL WATERGUARD TYPE, LARGE POLYPROPYLENE LOCKING DOME, WEJLOC® NON-PUNCTURING CLAMP RING WITH INTEGRAL GRAVEL STOP, SECURED PLASTIC INTERNAL WATERGUARD FOR 3" WATER DEPTH, LARGE SUMP WITH WIDE ROOF FLANGE AND BOTTOM OUTLET.

ROOF DRAIN

LARGE SUMP, INTERNAL WATERGUARD

SERIES **21500-16**



▼ SEPARATE SUBMITTAL FOR THIS OPTION AVAILABLE

2"	PIPE SIZE	-3	DECK CLAMP ASY. AND DRAIN RECEIVER
3"	PIPE SIZE	-3C	DRAIN RECEIVER AND DRAIN RECEIVER CLIPS
4"	PIPE SIZE	-4	SECONDARY FLASHING CLAMP (-AE ONLY)
5"	PIPE SIZE	-6	EXTRA WIDE FLANGE DRAIN BODY (-X OUTLET ONLY)
6"	PIPE SIZE	-10	FIXED EXT. COLLAR, CAST IRON (SPECIFY HEIGHT **)
		-10-20	FIXED EXT. COLLAR, GALVANIZED (SPECIFY HEIGHT **)
		-16	INTERNAL WATERGUARD (2" THRU 6" OUTLETS ONLY)
-X	INSIDE CAULK OUTLET	-16GLV	GALV. STEEL INTERNAL WATERGUARD (2"-6" ONLY)
-Y	HUB OUTLET W/GASKET (2", 3" & 4" SIZES ONLY)	-19	CLAMP COLLAR W/PERF. STAINLESS GRAVEL GUARD
-Z	NO-HUB SPIGOT OUTLET	-20	GALVANIZED CAST IRON PARTS
-T	THREADED OUTLET	-21	GALVANIZED CAST IRON DOME ONLY
		-22	CAST IRON DOME
-AE	THREADED LEVELEZE® ADJ. EXT.	-23	ROUGH BRONZE DOME
-AER	ADJ. EXT. USING THREADED RODS	-26	ALUMINUM DOME
-IRMA	PERFORATED STAINLESS STEEL EXT.	-33	STAINLESS STEEL MESH-COVERED DOME
-CR	CLAMPING DRAIN RECEIVER (MIN. DECK OPENING Ø16")	-66	NO-HUB SIDE OUTLET (2" THRU 6" OUTLETS ONLY)
-1	DECK CLAMP ASY.	-VP	VANDAL-PROOF DOME
-1C	DRAIN RECEIVER CLIPS (MIN. DECK OPENING Ø16")		
-2	DRAIN RECEIVER		

DATE OF LAST CHANGE: 5/04/15

DIMENSIONS ARE SUBJECT TO MANUFACTURERS TOLERANCES AND CHANGE WITHOUT NOTICE. WE CAN ASSUME NO RESPONSIBILITY FOR USE OF SUPERSEDED OR VOID DATA.

JOSAM COMPANY
MICHIGAN CITY, INDIANA

NOTES

SPECIFICATION:

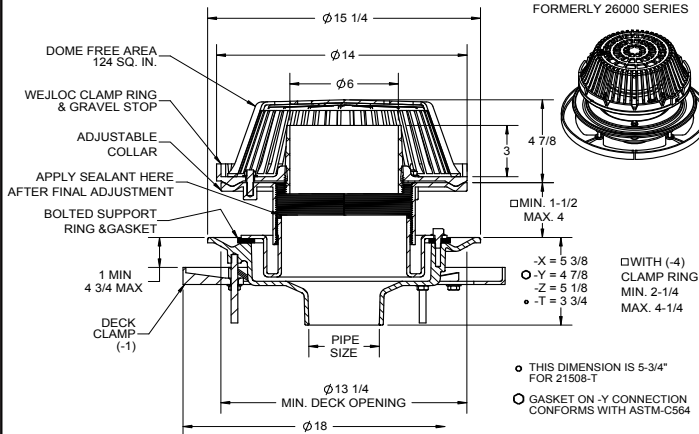
JOSAM 21500-AE-16 SERIES COATED CAST IRON LEVELEZE® ROOF DRAIN, INTERNAL WATERGUARD TYPE, LARGE POLYPROPYLENE LOCKING DOME, WEJLOC® NON-PUNCTURING CLAMP RING WITH INTEGRAL GRAVEL STOP, BOLTED SUPPORT RING, SECURED PLASTIC INTERNAL WATERGUARD FOR 3" WATER DEPTH, ADJUSTABLE TOP, LARGE SUMP WITH WIDE ROOF FLANGE AND BOTTOM OUTLET.

ROOF DRAIN

W/ LEVELEZE® ADJUSTABLE EXTENSION & INTERNAL WATERGUARD

SERIES **21500-AE-16**

FORMERLY 26000 SERIES



	2"	PIPE SIZE
	3"	PIPE SIZE
	4"	PIPE SIZE
	5"	PIPE SIZE
	6"	PIPE SIZE
X	-AE	THREADED LEVELEZE® ADJ. EXT.
	-CR	CLAMPING DRAIN RECEIVER (MIN. DECK OPENING Ø16")
	-VP	SECURED DOME
	-1	DECK CLAMP ASSEMBLY
	-1C	DRAIN RECEIVER CLIPS (MIN. DECK OPENING Ø16")
	-2	DRAIN RECEIVER
	-3	DECK CLAMP ASY. AND DRAIN RECEIVER
	-3C	DRAIN RECEIVER AND DRAIN RECEIVER CLIPS
	-4	SECONDARY FLASHING CLAMP (-AE ONLY)

	-6	EXTRA WIDE FLANGE DRAIN BODY (-X OUTLET ONLY)
	-10	FIXED EXT. COLLAR, CAST IRON, 4" STD. (SPECIFY HEIGHT)
	-10-20	FIXED EXT. COLLAR, GALVANIZED, 4" STD. (SPECIFY HEIGHT)
X	-16*	INTERNAL WATERGUARD (2" THRU 6" OUTLETS ONLY)
	-19	CLAMP COLLAR W/PERF. STAINLESS GRAVEL GUARD
	-20	GALVANIZED CAST IRON PARTS
	-21	GALVANIZED CAST IRON DOME ONLY
	-22	CAST IRON DOME
	-23	ROUGH BRONZE DOME
	-26	ALUMINUM DOME
	-33	STAINLESS STEEL MESH-COVERED DOME
	-66	NO-HUB SIDE OUTLET (2" THRU 6" OUTLETS ONLY)
	-T	THREADED OUTLET
	-X	INSIDE CAULK OUTLET
	-Y	HUB OUTLET W/GASKET (2", 3", 4" SIZES ONLY)
	-Z	NO-HUB SPIGOT OUTLET

Δ SEPARATE SUBMITTAL FOR THIS OPTION AVAILABLE

* -16 & -17 CANNOT BE FURNISHED TOGETHER

DATE OF LAST CHANGE: 5/04/15

DIMENSIONS ARE SUBJECT TO MANUFACTURERS TOLERANCES AND CHANGE WITHOUT NOTICE. WE CAN ASSUME NO RESPONSIBILITY FOR USE OF SUPERSEDED OR VOID DATA.

JOSAM COMPANY
MICHIGAN CITY, INDIANA

NOTES

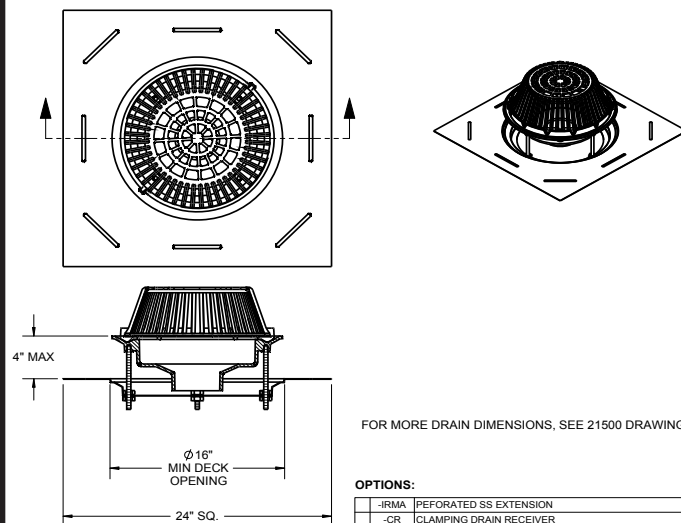
SPECIFICATION:

JOSAM 21500-AER SERIES COATED CAST IRON ROOF DRAIN, LARGE POLYPROPYLENE LOCKING DOME, WEJLOC® NON-PUNCTURING CLAMP RING, LARGE SUMP, DRAIN RECEIVER WITH ADJUSTABLE EXTENSION RODS, AND BOTTOM OUTLET.

ROOF DRAIN

WITH
ADJUSTABLE EXTENSION RODS

SERIES **21500-AER**



FOR MORE DRAIN DIMENSIONS, SEE 21500 DRAWING

OPTIONS:

-IRMA	PERFORATED SS EXTENSION
-CR	CLAMPING DRAIN RECEIVER
-6	EXTRA WIDE FLANGE DRAIN BODY (-X OUTLET ONLY)
-16*	INTERNAL WATERGUARD (2" - 6" ONLY)
-17*	2" HIGH SOLID CLAMPING COLLAR
-19	CLAMP COLLAR W/ PERF SS GRAVEL GUARD
-20	GALVANIZED CAST IRON PARTS
-21	GALVANIZED CAST IRON DOME ONLY
-22	CAST IRON DOME
-23	ROUGH BRONZE DOME
-26	ALUMINUM DOME
-33	SS MESH-COVERED DOME
-VP	VANDAL-PROOF DOME

PIPE
SIZE

2"
3"
4"
5"
6"
8"
10" □

OUTLET TYPES:

-T	THREADED
-X	INSIDE CAULK
-Y	HUB WITH GASKET (2", 3", 4" ONLY)
-Z	NO-HUB

□ 10" AVAILABLE IN NO-HUB ONLY

* -16 AND -17 CANNOT BE FURNISHED TOGETHER

DATE OF LAST CHANGE: 12/03/14

DIMENSIONS ARE SUBJECT TO MANUFACTURERS TOLERANCES AND CHANGE WITHOUT NOTICE. WE CAN ASSUME NO RESPONSIBILITY FOR USE OF SUPERSEDED OR VOID DATA.

JOSAM COMPANY
MICHIGAN CITY, INDIANA

NOTES

⚠ WARNING: Cancer and Reproductive Harm - www.p65warnings.ca.gov

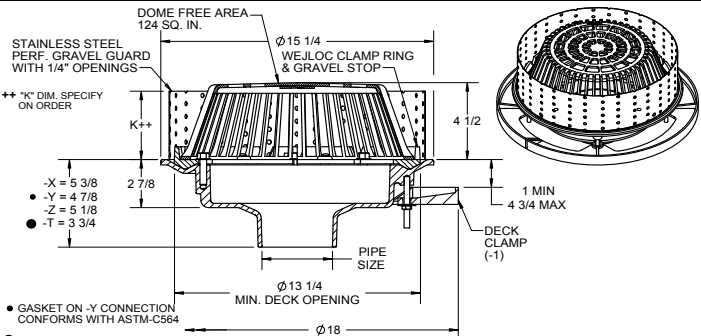
SPECIFICATION:

JOSAM 21500-19 SERIES COATED CAST IRON ROOF DRAIN, LARGE POLYPROPYLENE LOCKING DOME, WEJLOC® NON-PUNCTURING CLAMP RING WITH INTEGRAL GRAVEL STOP AND STAINLESS PERFORATED GRAVEL GUARD, LARGE SUMP WITH WIDE ROOF FLANGE AND BOTTOM OUTLET.

ROOF DRAIN

LARGE SUMP, STAINLESS GRAVEL GUARD

SERIES **21500-19**



* -16 & -17 CANNOT BE FURNISHED TOGETHER ** -10 EXTENSION 4" STANDARD

2"	PIPE SIZE	-3	DECK CLAMP ASY. AND DRAIN RECEIVER
3"	PIPE SIZE	-3C	DRAIN RECEIVER AND DRAIN RECEIVER CLIPS
4"	PIPE SIZE	-6	EXTRA WIDE FLANGE DRAIN BODY (-X OUTLET ONLY)
5"	PIPE SIZE	-10	FIXED EXT. COLLAR, CAST IRON (SPECIFY HEIGHT **)
6"	PIPE SIZE	-10-20	FIXED EXT. COLLAR, GALVANIZED (SPECIFY HEIGHT **)
8"	PIPE SIZE	-16*	INTERNAL WATERGUARD (2" THRU 6" OUTLETS ONLY)
10"	PIPE SIZE (AVAILABLE IN NO-HUB ONLY)	-17*	2" HIGH SOLID CLAMPING COLLAR
		X	CLAMP COLLAR W/PERF. STAINLESS GRAVEL GUARD
-X	INSIDE CAULK OUTLET	-20	GALVANIZED CAST IRON PARTS
-Y	HUB OUTLET W/GASKET (2", 3" & 4" SIZES ONLY)	-21	GALVANIZED CAST IRON DOME ONLY
-Z	NO-HUB SPIGOT OUTLET	-22	CAST IRON DOME
-T	THREADED OUTLET	-23	ROUGH BRONZE DOME
		-26	ALUMINUM DOME
-AE	THREADED LEVELIZE @ADJ. EXT.	-33	STAINLESS STEEL MESH-COVERED DOME
-AER	ADJUSTABLE EXT. USING THREADED RODS	-66	NO-HUB SIDE OUTLET (2" THRU 6" OUTLETS ONLY)
-IRMA	PERFORATED STAINLESS STEEL EXT.		
-CR	CLAMPING DRAIN RECEIVER (MIN. DECK OPENING Ø16")	-VP	VANDAL-PROOF DOME
-1	DECK CLAMP ASY.		
-1C	DRAIN RECEIVER CLIPS (MIN. DECK OPENING Ø16")		
-2	DRAIN RECEIVER		

DATE OF LAST CHANGE: 5/04/15

DIMENSIONS ARE SUBJECT TO MANUFACTURERS TOLERANCES AND CHANGE WITHOUT NOTICE. WE CAN ASSUME NO RESPONSIBILITY FOR USE OF SUPERSEDED OR VOID DATA.

JOSAM COMPANY
MICHIGAN CITY, INDIANA

NOTES

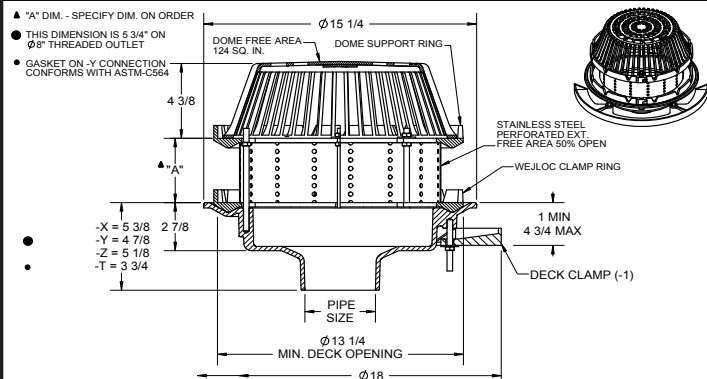
SPECIFICATION:

JOSAM 21500-IRMA SERIES COATED CAST IRON ROOF DRAIN, LARGE POLYPROPYLENE LOCKING DOME, DOME SUPPORT RING, PERFORATED STAINLESS STEEL EXTENSION FILTER, WEJLOC® NON-PUNCTURING CLAMP RING WITH INTEGRAL GRAVEL STOP, LARGE SUMP WITH WIDE ROOF FLANGE AND BOTTOM OUTLET.

ROOF DRAIN

WITH PERF. STAINLESS EXTENSION

SERIES **21500-IRMA**



* -16 & -17 CANNOT BE FURNISHED TOGETHER ** -10 EXTENSION 4" STANDARD ▼ SEPARATE SUBMITTAL FOR THIS OPTION AVAILABLE

2"	PIPE SIZE	-2	DRAIN RECEIVER
3"	PIPE SIZE	-3	DECK CLAMP ASSEMBLY AND DRAIN RECEIVER
4"	PIPE SIZE	-3C	DRAIN RECEIVER AND DRAIN RECEIVER CLIPS
5"	PIPE SIZE	▼ -6	EXTRA WIDE FLANGE DRAIN BODY (-X OUTLET ONLY)
6"	PIPE SIZE	-10	FIXED EXTENSION COLLAR, CAST IRON (SPECIFY HEIGHT **)
8"	PIPE SIZE	-10-20	FIXED EXTENSION COLLAR, GALVANIZED (SPECIFY HEIGHT **)
10"	PIPE SIZE (AVAILABLE IN NO-HUB ONLY)	-16*	INTERNAL WATERGUARD (2" THRU 6" OUTLETS ONLY)
		-17*	2" HIGH SOLID CLAMPING COLLAR
-X	INSIDE CAULK OUTLET	-19	CLAMP COLLAR W/PERF. STAINLESS GRAVEL GUARD
-Y	HUB OUTLET W/GASKET (2", 3" & 4" SIZES ONLY)	-20	GALVANIZED CAST IRON PARTS
-Z	NO-HUB SPIGOT OUTLET	-21	GALVANIZED CAST IRON DOME ONLY
-T	THREADED OUTLET	-22	CAST IRON DOME
		-23	ROUGH BRONZE DOME
X	IRMA PERFORATED STAINLESS STEEL EXTENSION	-26	ALUMINUM DOME
-CR	CLAMPING DRAIN RECEIVER (MIN. DECK OPENING Ø16")	-33	STAINLESS STEEL MESH-COVERED DOME
		-66	NO-HUB SIDE OUTLET (2" THRU 6" OUTLETS ONLY)
-1	DECK CLAMP ASSEMBLY		
-1C	DRAIN RECEIVER CLIPS (MIN. DECK OPENING Ø16")	-VP	VANDAL-PROOF DOME

DATE OF LAST CHANGE: 5/04/15

DIMENSIONS ARE SUBJECT TO MANUFACTURERS TOLERANCES AND CHANGE WITHOUT NOTICE. WE CAN ASSUME NO RESPONSIBILITY FOR USE OF SUPERSEDED OR VOID DATA.

JOSAM COMPANY
MICHIGAN CITY, INDIANA

NOTES

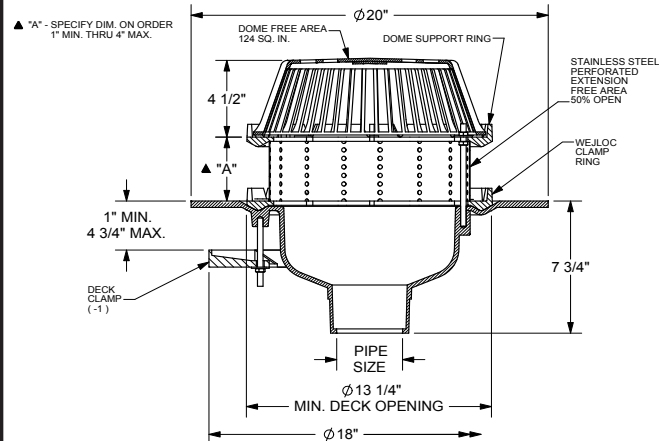
SPECIFICATION:

JOSAM 21500-IRMA-6 SERIES COATED CAST IRON ROOF DRAIN, LARGE POLYPROPYLENE LOCKING DOME, DOME SUPPORTING RING, PERFORATED STAINLESS STEEL EXTENSION FILTER, WEJLOC® NON-PUNCTURING CLAMP RING WITH INTEGRAL GRAVEL STOP, LARGE SUMP WITH EXTRA-WIDE ROOF FLANGE AND BOTTOM OUTLET INSIDE CAULK CONNECTION.

ROOF DRAIN

WITH PERF. STAINLESS EXTENSION

SERIES **21500-IRMA-6**



** -10 EXTENSION 4\" STANDARD

* -16 & -17 CANNOT BE FURNISHED TOGETHER

	2"	PIPE SIZE		-17*	2" HIGH SOLID CLAMPING COLLAR
	3"	PIPE SIZE		-19	CLAMP COLLAR W/PERF. STAINLESS GRAVEL GUARD
	4"	PIPE SIZE		-20	GALVANIZED CAST IRON PARTS
	5"	PIPE SIZE		-21	GALVANIZED CAST IRON DOME ONLY
	6"	PIPE SIZE		-22	CAST IRON DOME
				-23	ROUGH BRONZE DOME
X	-X	INSIDE CAULK OUTLET		-26	ALUMINUM DOME
X	-IRMA	PERFORATED STAINLESS STEEL EXTENSION		-33	STAINLESS STEEL MESH-COVERED DOME
				-66	NO-HUB SIDE OUTLET
	-1	DECK CLAMP ASSEMBLY		-VP	VANDAL-PROOF DOME
X	-6	EXTRA WIDE FLANGE DRAIN BODY			
	-10	FIXED EXT. COLLAR, CAST IRON (SPECIFY HEIGHT **)			
	-10-20	FIXED EXT. COLLAR, GALVANIZED (SPECIFY HEIGHT **)			
	-16*	INTERNAL WATERGUARD			

DATE OF LAST CHANGE: 5/6/09

DIMENSIONS ARE SUBJECT TO MANUFACTURERS TOLERANCES AND CHANGE WITHOUT NOTICE. WE CAN ASSUME NO RESPONSIBILITY FOR USE OF SUPERSEDED OR VOID DATA.

JOSAM COMPANY
MICHIGAN CITY, INDIANA

NOTES

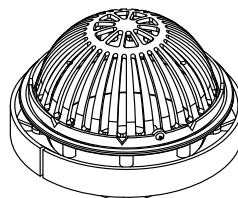
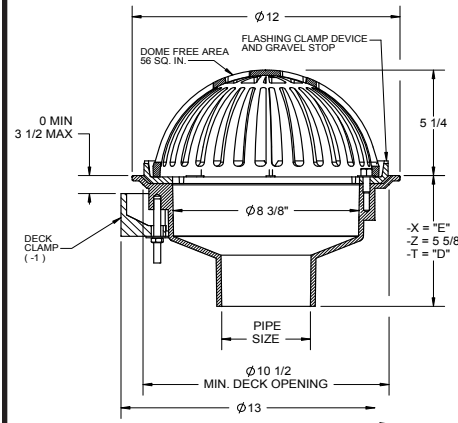
SPECIFICATION:

JOSAM 22010 SERIES COATED CAST IRON ROOF DRAIN, MEDIUM BEEHIVE DOME, NON-PUNCTURING CLAMP RING WITH INTEGRAL GRAVEL STOP, MEDIUM SUMP WITH ROOF FLANGE AND BOTTOM OUTLET.

ROOF DRAIN

MEDIUM SUMP, BEEHIVE DOME

SERIES **22010**



-X = "E"
-Z = 5 5/8
-T = "D"

	PIPE SIZE	"D" DIM.	"E" DIM.
	2"	4 3/4"	6 1/4"
	3"	4 3/4"	6 1/4"
	4"	4 1/2"	6 1/4"
	5"	4 3/8"	6"
	6"	4"	5 3/4"

▼ SEPARATE SUBMITTAL FOR THIS OPTION AVAILABLE

** -10 EXTENSION 1\" STANDARD

	2"	PIPE SIZE		-10	FIXED EXT. COLLAR, CAST IRON (SPECIFY HEIGHT **)
	3"	PIPE SIZE		-10-20	FIXED EXT. COLLAR, GALVANIZED (SPECIFY HEIGHT **)
	4"	PIPE SIZE	▼	-17	2" HIGH SOLID CLAMPING COLLAR
	5"	PIPE SIZE	▼	-19	CLAMP COLLAR W/PERF. STAINLESS GRAVEL GUARD
	6"	PIPE SIZE		-20	GALVANIZED CAST IRON PARTS
				-23	ROUGH BRONZE DOME
	-X	INSIDE CAULK OUTLET		-66	NO-HUB SIDE OUTLET (2\" THRU 6\" OUTLETS ONLY)
	-Z	NO-HUB SPIGOT OUTLET			
	-T	THREADED OUTLET		-VP	VANDAL-PROOF DOME
	-1	DECK CLAMP ASSEMBLY			
	-1C	DRAIN RECEIVER CLIPS (MIN. DECK OPENING Ø16.5\")			
	-2	DRAIN RECEIVER			
	-3	DECK CLAMP ASY. AND DRAIN RECEIVER			
	-3C	DRAIN RECEIVER AND DRAIN RECEIVER CLIPS			

DATE OF LAST CHANGE: 5/04/15

DIMENSIONS ARE SUBJECT TO MANUFACTURERS TOLERANCES AND CHANGE WITHOUT NOTICE. WE CAN ASSUME NO RESPONSIBILITY FOR USE OF SUPERSEDED OR VOID DATA.

JOSAM COMPANY
MICHIGAN CITY, INDIANA

NOTES

⚠ WARNING: Cancer and Reproductive Harm - www.p65warnings.ca.gov

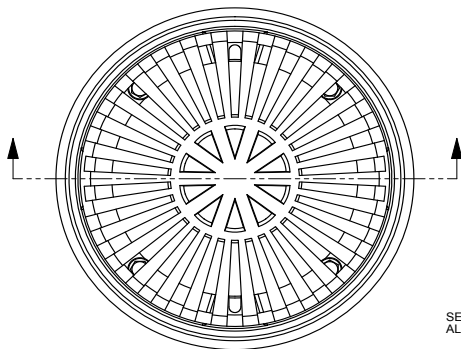
SPECIFICATION:

JOSAM 22010-17 SERIES COATED CAST IRON ROOF DRAIN, MEDIUM BEEHIVE DOME, NON-PUNCTURING CLAMP RING WITH INTEGRAL GRAVEL STOP, MEDIUM SUMP WITH ROOF FLANGE AND BOTTOM OUTLET.

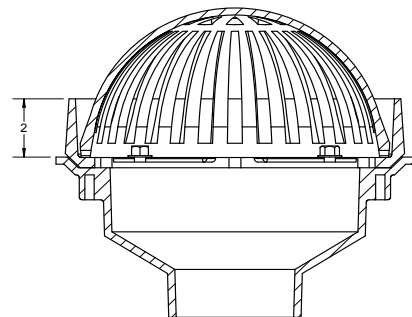
ROOF DRAIN

MEDIUM SUMP, BEEHIVE DOME

SERIES **22010-17**



SEE 22010 SUBMITTAL FOR ALL OTHER DIMENSIONS.



DATE OF LAST CHANGE: 5/04/15

DIMENSIONS ARE SUBJECT TO MANUFACTURERS TOLERANCES AND CHANGE WITHOUT NOTICE. WE CAN ASSUME NO RESPONSIBILITY FOR USE OF SUPERSEDED OR VOID DATA.

JOSAM COMPANY
MICHIGAN CITY, INDIANA

NOTES

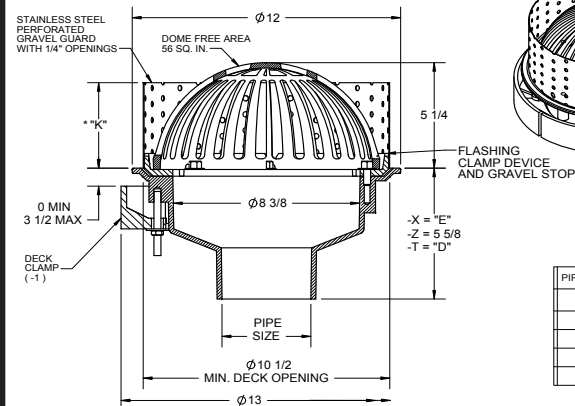
SPECIFICATION:

JOSAM 22010-19 SERIES COATED CAST IRON ROOF DRAIN, MEDIUM BEEHIVE DOME, NON-PUNCTURING CLAMP RING WITH INTEGRAL GRAVEL STOP AND STAINLESS PERFORATED GRAVEL GUARD, MEDIUM SUMP WITH ROOF FLANGE AND BOTTOM OUTLET.

ROOF DRAIN

MEDIUM SUMP, BEEHIVE DOME, STAINLESS GRAVEL GUARD

SERIES **22010-19**



* "K" DIM. SPECIFY ON ORDER - MAX. 4"

** -10 EXTENSION 1" STANDARD

PIPE SIZE	"D" DIM.	"E" DIM
2"	4 3/4"	6 1/4"
3"	4 3/4"	6 1/4"
4"	4 1/2"	6 1/4"
5"	4 3/8"	6"
6"	4"	5 3/4"

2"	PIPE SIZE	-10	FIXED EXT. COLLAR, CAST IRON (SPECIFY HEIGHT **)
3"	PIPE SIZE	-10-20	FIXED EXT. COLLAR, GALVANIZED (SPECIFY HEIGHT **)
4"	PIPE SIZE	-17	2" HIGH SOLID CLAMPING COLLAR
5"	PIPE SIZE	-19	CLAMP COLLAR WITH PERF. STAINLESS GRAVEL GUARD
6"	PIPE SIZE	-20	GALVANIZED CAST IRON PARTS
		-21	GALVANIZED CAST IRON DOME ONLY
-X	INSIDE CAULK OUTLET	-23	ROUGH BRONZE DOME
-Z	NO-HUB SPIGOT OUTLET	-66	NO-HUB SIDE OUTLET (2" THRU 6" OUTLETS ONLY)
-T	THREADED OUTLET		
		-VP	VANDAL-PROOF DOME
-1	DECK CLAMP ASSEMBLY		
-1C	DRAIN RECEIVER CLIPS (MIN. DECK OPENING Ø16.5")		
-2	DRAIN RECEIVER		
-3	DECK CLAMP ASY. AND DRAIN RECEIVER		
-3C	DRAIN RECEIVER AND DRAIN RECEIVER CLIPS		

DATE OF LAST CHANGE: 5/04/15

DIMENSIONS ARE SUBJECT TO MANUFACTURERS TOLERANCES AND CHANGE WITHOUT NOTICE. WE CAN ASSUME NO RESPONSIBILITY FOR USE OF SUPERSEDED OR VOID DATA.

JOSAM COMPANY
MICHIGAN CITY, INDIANA

NOTES

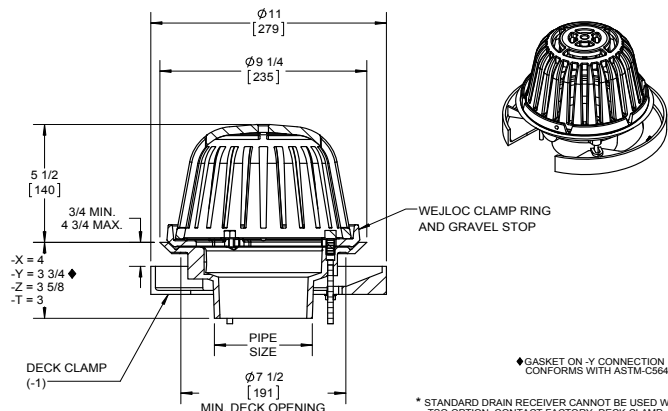
SPECIFICATION:

JOSAM 22080 SERIES COATED CAST IRON ROOF DRAIN, BEEHIVE DOME, WEJLOC® NON-PUNCTURING CLAMP RING WITH INTEGRAL GRAVEL STOP, SMALL SUMP WITH ROOF FLANGE AND BOTTOM OUTLET.

ROOF DRAIN SMALL SUMP, HIGH DOME

SERIES **22080**

DOME FREE AREA: 37.6 SQ. IN.



◆ GASKET ON -Y CONNECTION
CONFORMS WITH ASTM-C564

* STANDARD DRAIN RECEIVER CANNOT BE USED WITH
-TSO OPTION. CONTACT FACTORY. DECK CLAMP
CANNOT BE USED WITH -TSO OPTION IN 4" SIZE.

** .10 EXTENSION 1" STANDARD

▼ SEPARATE SUBMITTAL FOR THIS OPTION AVAILABLE

	2"	PIPE SIZE		-10-20	FIXED EXT. COLLAR, GALVANIZED (SPECIFY HEIGHT **)
	3"	PIPE SIZE	▼	-17	2" HIGH SOLID CLAMPING COLLAR
	4"	PIPE SIZE		-20	GALVANIZED CAST IRON PARTS
				-21	GALVANIZED CAST IRON DOME ONLY
	-X	INSIDE CAULK OUTLET		-23	ROUGH BRONZE DOME
	-Y	HUB OUTLET WITH GASKET		-33	SS MESH-COVERED DOME
	-Z	NO-HUB SPIGOT OUTLET		-TSO*	THREADED SIDE OUTLET
	-T	THREADED OUTLET			
				-VP	VANDAL-PROOF DOME
	-1	DECK CLAMP ASSEMBLY			
	-1C	DRAIN RECEIVER CLIPS (MIN. DECK OPENING Ø 16.5")			
	-2	DRAIN RECEIVER			
	-3	DECK CLAMP ASSEMBLY AND DRAIN RECEIVER			
	-3C	DRAIN RECEIVER AND DRAIN RECEIVER CLIPS			
	-10	FIXED EXT. COLLAR, CAST IRON (SPECIFY HEIGHT **)			

DATE OF LAST CHANGE: 04/28/15

DIMENSIONS ARE SUBJECT TO MANUFACTURERS
TOLERANCES AND CHANGE WITHOUT NOTICE.
WE CAN ASSUME NO RESPONSIBILITY FOR
USE OF SUPERSEDED OR VOID DATA.

JOSAM COMPANY
MICHIGAN CITY, INDIANA

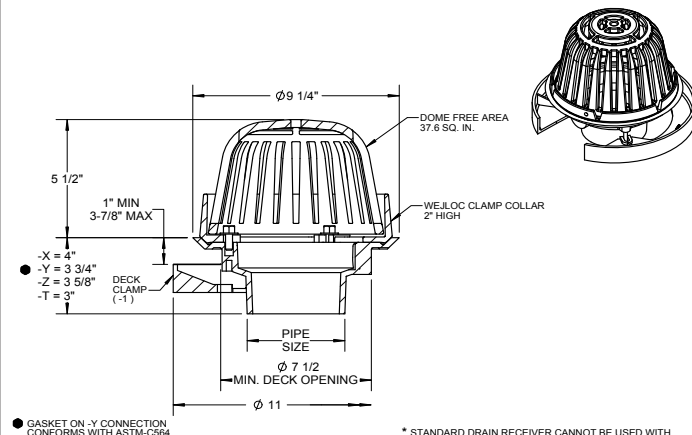
NOTES

SPECIFICATION:

JOSAM 22080-17 SERIES COATED CAST IRON ROOF DRAIN, BEEHIVE DOME, WEJLOC® 2" HIGH NON-PUNCTURING CLAMP COLLAR, SMALL SUMP WITH ROOF FLANGE AND BOTTOM OUTLET.

ROOF DRAIN SMALL SUMP, HIGH DOME, 2" CLAMP COLLAR

SERIES **22080-17**



◆ GASKET ON -Y CONNECTION
CONFORMS WITH ASTM-C564

* STANDARD DRAIN RECEIVER CANNOT BE USED WITH
-TSO OPTION. CONTACT FACTORY. DECK CLAMP
CANNOT BE USED WITH -TSO OPTION IN 4" SIZE.

** .10 EXTENSION 1" STANDARD

	2"	PIPE SIZE		-10-20	FIXED EXT. COLLAR, GALVANIZED (SPECIFY HEIGHT **)
	3"	PIPE SIZE	X	-17	2" HIGH SOLID CLAMPING COLLAR
	4"	PIPE SIZE		-20	GALVANIZED CAST IRON PARTS
				-21	GALVANIZED CAST IRON DOME ONLY
	-X	INSIDE CAULK OUTLET		-23	ROUGH BRONZE DOME
	-Y	HUB OUTLET WITH GASKET		-33	SS MESH-COVERED DOME
	-Z	NO-HUB SPIGOT OUTLET		-TSO*	THREADED SIDE OUTLET
	-T	THREADED OUTLET			
				-VP	VANDAL-PROOF DOME
	-1	DECK CLAMP ASSEMBLY			
	-1C	DRAIN RECEIVER CLIPS (MIN. DECK OPENING Ø 16.5")			
	-2	DRAIN RECEIVER			
	-3	DECK CLAMP ASSEMBLY AND DRAIN RECEIVER			
	-3C	DRAIN RECEIVER AND DRAIN RECEIVER CLIPS			
	-10	FIXED EXT. COLLAR, CAST IRON (SPECIFY HEIGHT **)			

DATE OF LAST CHANGE: 08/27/14

DIMENSIONS ARE SUBJECT TO MANUFACTURERS
TOLERANCES AND CHANGE WITHOUT NOTICE.
WE CAN ASSUME NO RESPONSIBILITY FOR
USE OF SUPERSEDED OR VOID DATA.

JOSAM COMPANY
MICHIGAN CITY, INDIANA

NOTES

⚠ WARNING: Cancer and Reproductive Harm - www.p65warnings.ca.gov

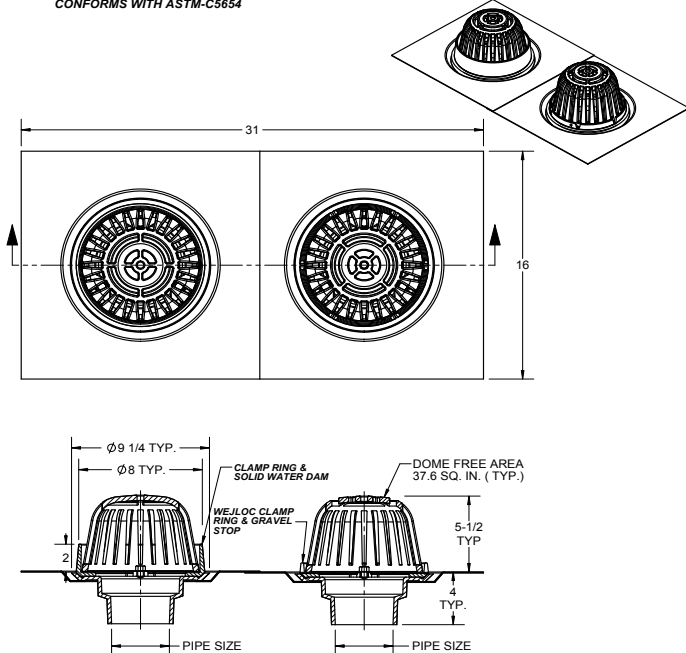
SPECIFICATION:

JOSAM SERIES 22080-Q5 COMBINATION ROOF DRAIN AND OVERFLOW. CONSISTS OF SMALL SUMP ROOF DRAIN WITH CAST IRON BEEHIVE DOME, SMALL SUMP OVERFLOW DRAIN WITH CAST IRON BEEHIVE DOME, SOLID WATER DAM AND ONE PIECE GALVANIZED STEEL DRAIN RECEIVER.

**ROOF DRAIN
PRIMARY & OVERFLOW
COMBINATION**

SERIES **22080-Q5**

CONFORMS WITH ASTM-C564



2"	PIPE SIZE	22082-Q5	-PVC	PVC SMALL SUMP BODY
3"	PIPE SIZE	22083-Q5		
4"	PIPE SIZE	22084-Q5		

DATE OF LAST CHANGE: 5/04/15

DIMENSIONS ARE SUBJECT TO MANUFACTURERS TOLERANCES AND CHANGE WITHOUT NOTICE. WE CAN ASSUME NO RESPONSIBILITY FOR USE OF SUPERSEDED OR VOID DATA.

JOSAM COMPANY
MICHIGAN CITY, INDIANA

NOTES

SPECIFICATION:

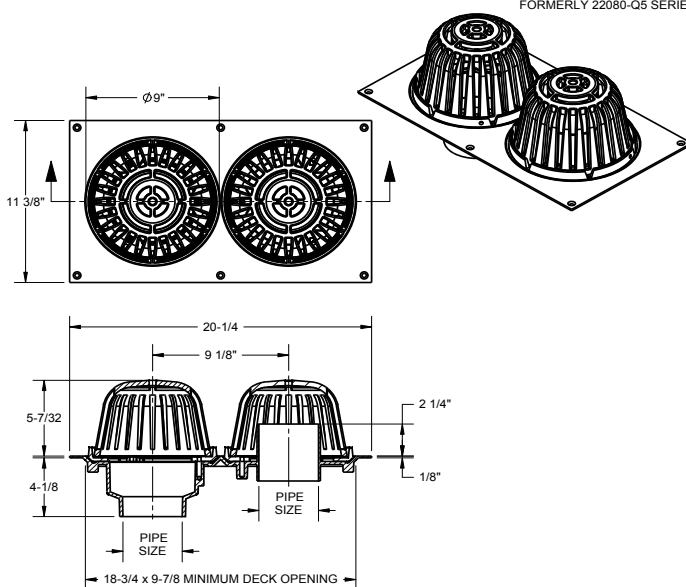
JOSAM 22100 SERIES COATED CAST IRON COMBINATION ROOF DRAIN AND OVERFLOW DRAIN WITH CAST IRON DOMES, WEJLOC® NON-PUNCTURING CLAMP RINGS WITH INTEGRAL GRAVEL STOPS, INTEGRAL CAST IRON STANDPIPE IN CAST IRON DECK FLANGE AND DUAL NO-HUB BOTTOM OUTLETS.

ROOF DRAIN

COMBINATION DRAIN/OVERFLOW

SERIES **22100**

FORMERLY 22080-Q5 SERIES



** -10 EXTENSION 1" STANDARD

2"	PIPE SIZE	-20	GALVANIZED CAST IRON PARTS
3"	PIPE SIZE	-23	ROUGH BRONZE DOME
4"	PIPE SIZE	-33	STAINLESS MESH SCREEN COVERED DOME
-1	DECK CLAMP ASSEMBLY	-IRMA	PERFORATED STAINLESS STEEL EXTENSION
-10	FIXED EXTENSION COLLAR, CAST IRON (SPECIFY HEIGHT **)	-VP	SECURED DOME
-19	CLAMP COLLAR W/PERF. STAINLESS STEEL GRAVEL GUARD	-21	GALVANIZED CAST IRON DOME ONLY

DATE OF LAST CHANGE: 11/11/2014

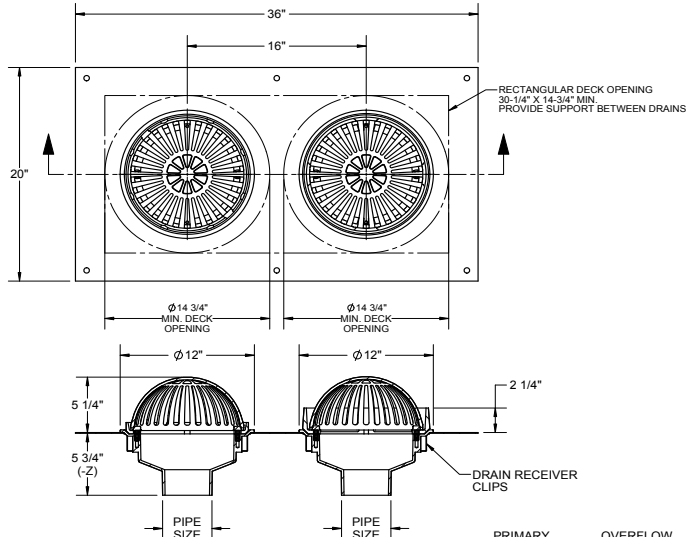
DIMENSIONS ARE SUBJECT TO MANUFACTURERS TOLERANCES AND CHANGE WITHOUT NOTICE. WE CAN ASSUME NO RESPONSIBILITY FOR USE OF SUPERSEDED OR VOID DATA.

JOSAM COMPANY
MICHIGAN CITY, INDIANA

NOTES

SPECIFICATION:

JOSAM 22200 SERIES COATED CAST IRON 12" DIAMETER COMBINATION ROOF DRAIN AND OVERFLOW DRAIN, ONE WEJLOC NON-PUNCTURING CLAMP RING WITH INTEGRAL GRAVEL STOP AND CAST IRON DOME, ONE NON-PUNCTURING CLAMP RING WITH SOLID WATER GUARD AND CAST IRON DOME.

**ROOF DRAIN
COMBINATION
DRAIN/OVERFLOW**
SERIES 22200
**OPTIONS:**

-10	FIXED EXT. COLLARS (SPECIFY HT.**)
-19	CLAMP COLLAR WITH PERF. SS GRAVEL GUARD
-20	GALVANIZED CAST IRON PARTS
-23	ROUGH BRONZE DOMES
-33	STAINLESS STEEL MESH-COVERED DOMES
-VP	VANDAL-PROOF DOMES
-IRMA	PERFORATED STAINLESS STEEL EXTENSIONS
-T*	THREADED OUTLET
-X*	INSIDE CAULK OUTLET
-Z	NO-HUB SPIGOT OUTLET

**PRIMARY
DRAIN**

PIPE SIZE
2"
3"
4"
5"
6"

**OVERFLOW
DRAIN**

PIPE SIZE
2"
3"
4"
5"
6"

*BODY HEIGHT VARIES BY OUTLET SIZE - SEE 222010 FOR DIMENSIONS

** -10 EXTENSIONS 1" STANDARD

DATE OF LAST CHANGE: 4/23/15

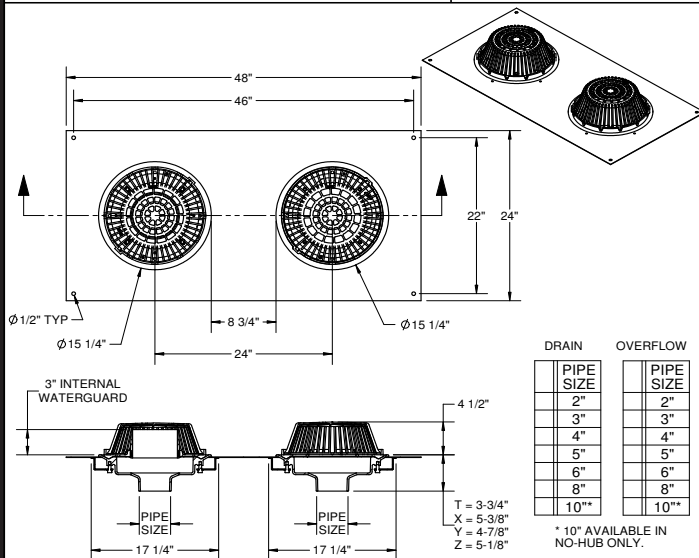
DIMENSIONS ARE SUBJECT TO MANUFACTURERS
TOLERANCES AND CHANGE WITHOUT NOTICE.
WE CAN ASSUME NO RESPONSIBILITY FOR
USE OF SUPERSEDED OR VOID DATA.

JOSAM COMPANY
MICHIGAN CITY, INDIANA

NOTES

SPECIFICATION:

JOSAM 22500 SERIES COATED CAST IRON 15" DIAMETER COMBINATION ROOF DRAIN AND OVERFLOW DRAIN, ONE (1) WEJLOC NON-PUNCTURING CLAMP RING WITH INTEGRAL GRAVEL STOP, ONE (1) WEJLOC NON-PUNCTURING CLAMP RING WITH INTERNAL WATER GUARD, DOUBLE DRAIN RECEIVER AND CLIPS, AND TWO (2) LARGE POLYPROPYLENE LOCKING DOMES.

**ROOF DRAIN
COMBINATION DRAIN/OVERFLOW**
SERIES 22500


-10	FIXED EXT. COLLARS, CAST IRON (SPECIFY HT.**)
-19	CLAMP COLLAR WITH PERF. SS GRAVEL GUARD
-20	GALVANIZED CAST IRON PARTS
-21	GALVANIZED CAST IRON DOMES ONLY
-22	CAST IRON DOMES
-23	ROUGH BRONZE DOMES
-26	ALUMINUM DOMES
-33	STAINLESS STEEL MESH-COVERED DOMES

** -10 EXTENSIONS 4" STANDARD

-SC	SOLID TOP COVER ON OVERFLOW DOME (-22 ONLY)
-VP	VANDAL-PROOF DOMES
-IRMA	PERFORATED STAINLESS STEEL EXTENSIONS
-T	THREADED OUTLET
-X	INSIDE CAULK OUTLET
-Y	HUB OUTLET WITH GASKET (2", 3" & 4" SIZES ONLY)
-Z	NO-HUB SPIGOT OUTLET

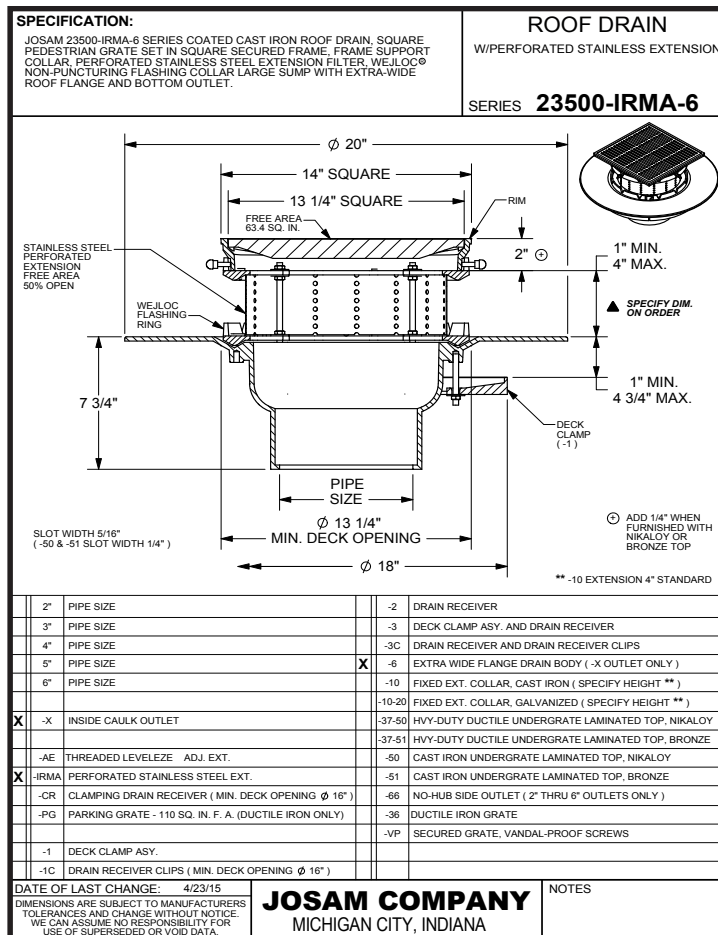
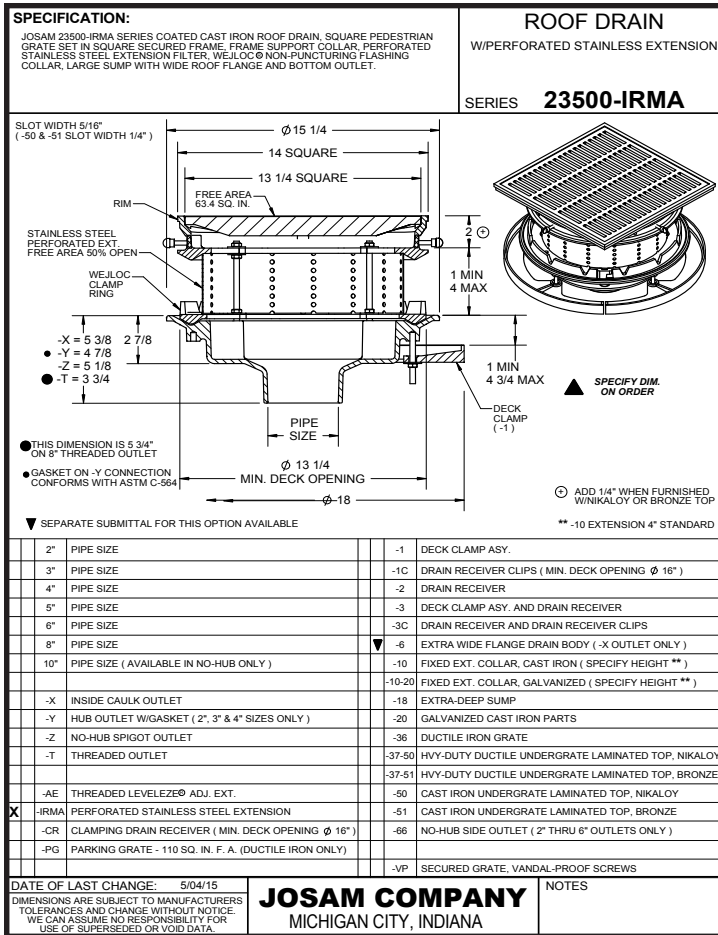
DATE OF LAST CHANGE: 04/25/14

DIMENSIONS ARE SUBJECT TO MANUFACTURERS
TOLERANCES AND CHANGE WITHOUT NOTICE.
WE CAN ASSUME NO RESPONSIBILITY FOR
USE OF SUPERSEDED OR VOID DATA.

JOSAM COMPANY
MICHIGAN CITY, INDIANA

NOTES

NOTES



SPECIFICATION:

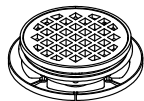
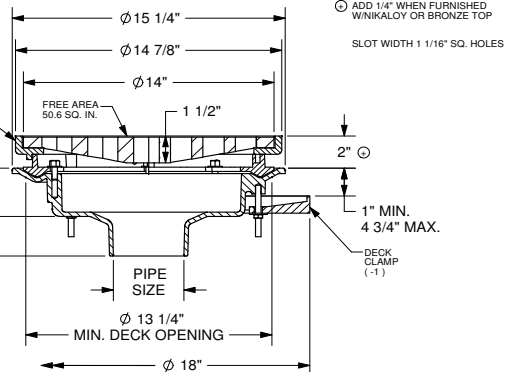
JOSAM 23510 SERIES COATED CAST IRON ROOF DRAIN, ROUND EXTRA-HEAVY DUTY GRATE SET IN ROUND SECURED FRAME, WEJLOC® NON-PUNCTURING FLASHING COLLAR WITH WEEPHOLES FOR 2" ROOF FILL, LARGE SUMP WITH WIDE ROOF FLANGE AND BOTTOM OUTLET.

ROOF DRAIN

EXTRA-HEAVY DUTY PARKING GRATE

SERIES **23510**

- THIS DIMENSION IS 5 3/4" ON 8" THREADED OUTLET
- GASKET ON -Y CONNECTION CONFORMS WITH ASTM-C564



** -10 EXTENSION 4" STANDARD

2" PIPE SIZE	-1	DECK CLAMP ASY.
3" PIPE SIZE	-1C	DRAIN RECEIVER CLIPS (MIN. DECK OPENING ϕ 16")
4" PIPE SIZE	-2	DRAIN RECEIVER
5" PIPE SIZE	-3	DECK CLAMP ASY. AND DRAIN RECEIVER
6" PIPE SIZE	-3C	DRAIN RECEIVER AND DRAIN RECEIVER CLIPS
8" PIPE SIZE	-10	FIXED EXT. COLLAR, CAST IRON (SPECIFY HEIGHT **)
10" PIPE SIZE (NO-HUB ONLY)	-10-20	FIXED EXT. COLLAR, GALVANIZED (SPECIFY HEIGHT **)
	-20	GALVANIZED CAST IRON PARTS
-X INSIDE CAULK OUTLET	-36	DUCTILE IRON GRATE (CAST IRON TOP ONLY)
-Y HUB OUTLET W/GASKET (2", 3" & 4" SIZES ONLY)	-50	SATIN FINISH NIKALOY TOP
-Z NO-HUB SPIGOT OUTLET	-51	SATIN FINISH BRONZE TOP
-T THREADED OUTLET		
-CR CLAMPING DRAIN RECEIVER (MIN. DECK OPENING ϕ 16")	-VP	SECURED GRATE, VANDAL-PROOF SCREWS

DATE OF LAST CHANGE: 3/14/14

DIMENSIONS ARE SUBJECT TO MANUFACTURERS TOLERANCES AND CHANGE WITHOUT NOTICE. WE CAN ASSUME NO RESPONSIBILITY FOR USE OF SUPERSEDED OR VOID DATA.

JOSAM COMPANY
MICHIGAN CITY, INDIANA

NOTES

SPECIFICATION:

JOSAM 23710 SERIES COATED CAST IRON ROOF DRAIN, ROUND PEDESTRIAN GRATE SET IN SQUARE SECURED FRAME, NON-PUNCTURING FLASHING COLLAR WITH WEEPHOLES FOR ROOF FILL, MEDIUM SUMP WITH WIDE ROOF FLANGE AND BOTTOM OUTLET.

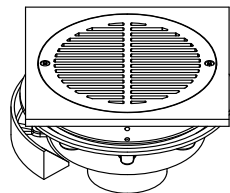
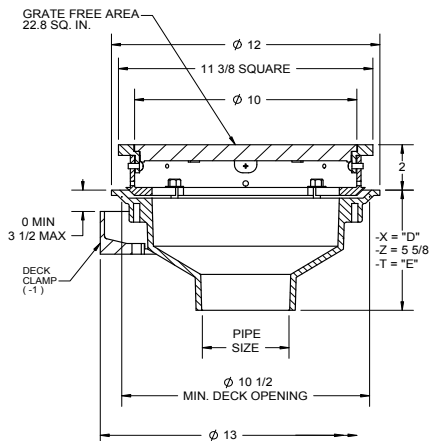
ROOF DRAIN

MEDIUM SUMP, PROMENADE TOP

SERIES **23710**

THIS DRAIN IS COMPLIANT WITH THE ANSI/ASME STANDARD A112.6.3-2001 FOR HEEL-RESISTANT STRAINERS AND THE MAXIMUM GRATE SLOT SIZE BE 5/16" (8mm)

SLOT WIDTH 1/4"



** -12 EXTENSION 1" STANDARD

2" PIPE SIZE [DIM "D" = 4 3/4", DIM "E" = 6 1/4"]	-1	DECK CLAMP ASY.
3" PIPE SIZE [DIM "D" = 4 3/4", DIM "E" = 6 1/4"]	-1C	DRAIN RECEIVER CLIPS (MIN. DECK OPENING ϕ 13.75")
4" PIPE SIZE [DIM "D" = 4 1/2", DIM "E" = 6 1/4"]	-2	DRAIN RECEIVER
5" PIPE SIZE [DIM "D" = 4 3/8", DIM "E" = 6"]	-3	DECK CLAMP ASY. AND DRAIN RECEIVER
6" PIPE SIZE [DIM "D" = 4", DIM "E" = 5 3/4"]	-3C	DRAIN RECEIVER AND DRAIN RECEIVER CLIPS
	-12	EXTENSION FLASHING COLLAR, CAST IRON (SPECIFY HEIGHT **)
-X INSIDE CAULK OUTLET	-20	GALVANIZED CAST IRON PARTS
-Z NO-HUB SPIGOT OUTLET	-50	SATIN FINISH NIKALOY TOP
-T THREADED OUTLET	-51	SATIN FINISH BRONZE TOP
	-66	NO-HUB SIDE OUTLET
	-VP	SECURED GRATE, VANDAL-PROOF SCREWS

DATE OF LAST CHANGE: 5/04/15

DIMENSIONS ARE SUBJECT TO MANUFACTURERS TOLERANCES AND CHANGE WITHOUT NOTICE. WE CAN ASSUME NO RESPONSIBILITY FOR USE OF SUPERSEDED OR VOID DATA.

JOSAM COMPANY
MICHIGAN CITY, INDIANA

NOTES

⚠ WARNING: Cancer and Reproductive Harm - www.p65warnings.ca.gov

SPECIFICATION:

JOSAM 23710-IRMA SERIES COATED CAST IRON ROOF DRAIN, ROUND PEDESTRIAN GRATE SET IN SQUARE SECURED FRAME, NON-PUNCTURING FLASHING COLLAR WITH WEEPHOLES FOR ROOF FILL, MEDIUM SUMP WITH WIDE ROOF FLANGE, BOTTOM OUTLET, AND PERFORATED IRMA EXTENSION.

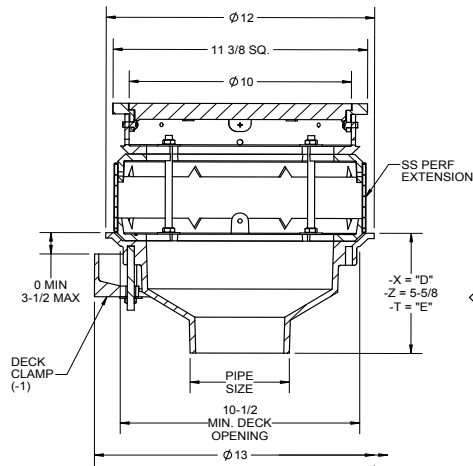
ROOF DRAIN

MEDIUM SUMP, PROMENADE TOP
WITH SS PERF EXTENSION

SERIES **23710-IRMA**

THIS DRAIN IS COMPLIANT WITH THE ANSIA/MSA STANDARD A112.6.3-2001 FOR HEEL-RESISTANT STRAINERS AND THE MAXIMUM GRATE SLOT SIZE TO BE 5/16" (5mm)

SLOT WIDTH 1/4"
GRATE FREE AREA: 22.8 SQ IN



** -12 EXTENSION 1" STANDARD

2"	PIPE SIZE [DIM "D" = 4 3/4", DIM "E" = 6 1/4"]	-1	DECK CLAMP ASY.
3"	PIPE SIZE [DIM "D" = 4 3/4", DIM "E" = 6 1/4"]	-1C	DRAIN RECEIVER CLIPS (MIN. DECK OPENING ϕ 13.75")
4"	PIPE SIZE [DIM "D" = 4 1/2", DIM "E" = 6 1/4"]	-2	DRAIN RECEIVER
5"	PIPE SIZE [DIM "D" = 4 3/8", DIM "E" = 6"]	-3	DECK CLAMP ASY. AND DRAIN RECEIVER
6"	PIPE SIZE [DIM "D" = 4", DIM "E" = 5 3/4"]	-3C	DRAIN RECEIVER AND DRAIN RECEIVER CLIPS
		-12	EXTENSION FLASHING COLLAR, CAST IRON (SPECIFY HEIGHT **)
-X	INSIDE CAULK OUTLET	-20	GALVANIZED CAST IRON PARTS
-Z	NO-HUB SPIGOT OUTLET	-50	SATIN FINISH NIKALLOY TOP
-T	THREADED OUTLET	-51	SATIN FINISH BRONZE TOP
		-66	NO-HUB SIDE OUTLET
		-VP	SECURED GRATE, VANDAL-PROOF SCREWS

DATE OF LAST CHANGE: 5/04/15

DIMENSIONS ARE SUBJECT TO MANUFACTURERS TOLERANCES AND CHANGE WITHOUT NOTICE. WE CAN ASSUME NO RESPONSIBILITY FOR USE OF SUPERSEDED OR VOID DATA.

JOSAM COMPANY
MICHIGAN CITY, INDIANA

NOTES

SPECIFICATION:

JOSAM 23730 SERIES COATED CAST IRON ROOF DRAIN, ROUND PEDESTRIAN GRATE SET IN SQUARE SECURED FRAME, NON-PUNCTURING FLASHING COLLAR WITH WEEPHOLES FOR 2" ROOF FILL, SMALL SUMP WITH WIDE ROOF FLANGE AND BOTTOM OUTLET.

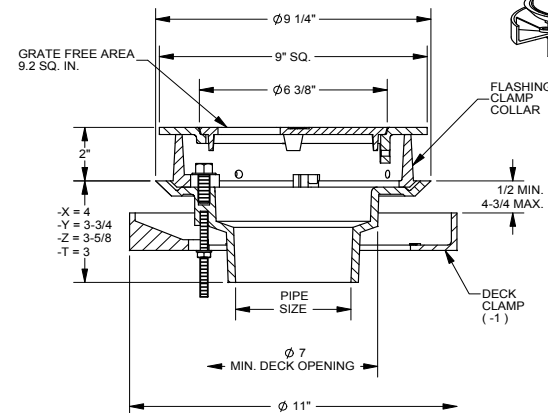
ROOF DRAIN

SMALL SUMP, PROMENADE TOP

SERIES **23730**

● CONFORMS WITH ASTM-C564

SLOT WIDTH 1/4"
MEETS ADA AND HEEL-PROOF REQUIREMENTS



* -TSO BODY CANNOT BE USED WITH DRAIN RECEIVER (-2, -3 & -3C)

** -12 EXTENSION 1" STANDARD

2"	PIPE SIZE	-1C	DRAIN RECEIVER CLIPS (MIN. DECK OPENING ϕ 10.5")
3"	PIPE SIZE	-2	DRAIN RECEIVER
4"	PIPE SIZE	-3	DECK CLAMP ASSEMBLY AND DRAIN RECEIVER
		-3C	DRAIN RECEIVER AND DRAIN RECEIVER CLIPS
-T	THREADED OUTLET	-12	EXTENSION FLASHING COLLAR, CAST IRON (SPECIFY HEIGHT **)
-X	INSIDE CAULK OUTLET	-12-20	EXTENSION FLASHING COLLAR, GALVANIZED (SPECIFY HEIGHT **)
-Y	HUB OUTLET WITH GASKET	-20	GALVANIZED CAST IRON PARTS
-Z	NO-HUB SPIGOT OUTLET	-50	SATIN FINISH NIKALLOY TOP
-81	BUCKET	-50TP	PRIMER TAP
-TSO*	THREADED SIDE OUTLET	-51	SATIN FINISH BRONZE TOP
-1	DECK CLAMP ASSEMBLY	-VP	SECURED GRATE, VANDAL-PROOF SCREWS

DATE OF LAST CHANGE: 11/06/14

DIMENSIONS ARE SUBJECT TO MANUFACTURERS TOLERANCES AND CHANGE WITHOUT NOTICE. WE CAN ASSUME NO RESPONSIBILITY FOR USE OF SUPERSEDED OR VOID DATA.

JOSAM COMPANY
MICHIGAN CITY, INDIANA

NOTES

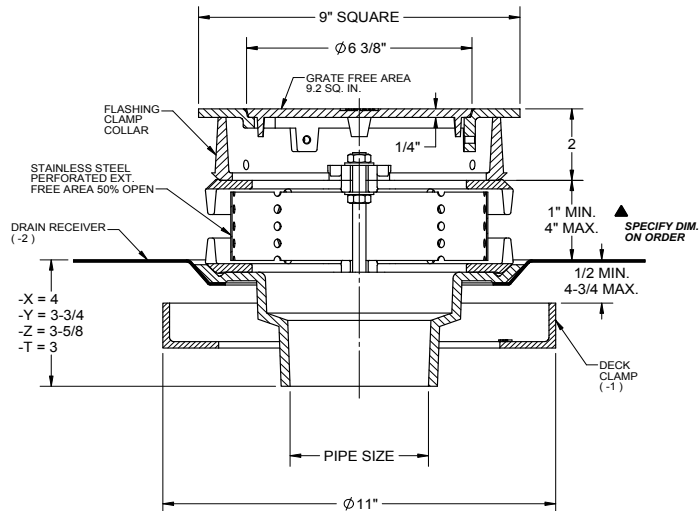
SPECIFICATION:

JOSAM SERIES 23730-IRMA COATED CAST IRON ROOF DRAIN, ROUND PEDESTRIAN GRATE SET IN SQUARE FRAME, PERFORATED STAINLESS STEEL EXTENSION FILTER, WEJLOC® NON-PUNCTURING FLASHING COLLAR WITH WEEP HOLES, SMALL SUMP WITH WIDE ROOF FLANGE AND BOTTOM OUTLET.

**ROOF DRAINS
PROMENADE TOP**

 SERIES **23730-IRMA**
CONFORMS WITH ASTM - C564

SLOT WIDTH 1/4"
MEETS ADA AND HEEL-PROOF REQUIREMENTS



DATE OF LAST CHANGE: 12/11/13

DIMENSIONS ARE SUBJECT TO MANUFACTURERS
TOLERANCES AND CHANGE WITHOUT NOTICE.
WE CAN ASSUME NO RESPONSIBILITY FOR
USE OF SUPERSEDED OR VOID DATA

JOSAM COMPANY
MICHIGAN CITY, INDIANA

NOTES

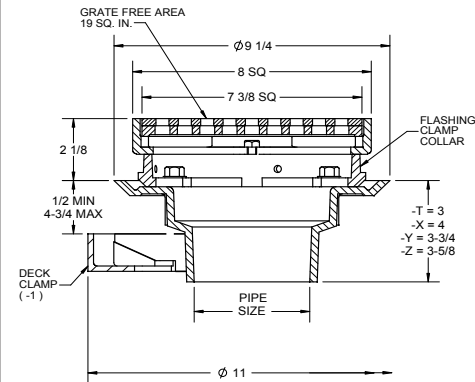
SPECIFICATION:

JOSAM 23740 SERIES COATED CAST IRON ROOF DRAIN, SQUARE HEAVY-DUTY DUCTILE IRON UNDERGRATE WITH NIKALOY TOP SET IN SQUARE SECURED FRAME, NON-PUNCTURING FLASHING COLLAR WITH WEEP HOLES FOR 2\"/>

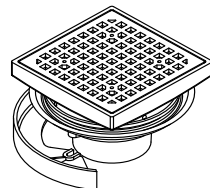
**ROOF DRAIN
HEAVY-DUTY, PROMENADE TOP**

 SERIES **23740**

- CONFORMS WITH
ASTM-C564



SLOT WIDTH 7/16\"/>



* -TSO BODY CANNOT BE USED WITH DRAIN RECEIVER (-2, -3 & -3C)

** -12 EXTENSION 1\"/>

	2"	PIPE SIZE		-1	DECK CLAMP ASSEMBLY
	3"	PIPE SIZE		-1C	DRAIN RECEIVER CLIPS (MIN. DECK OPENING Ø10.25")
	4"	PIPE SIZE		-2	DRAIN RECEIVER
				-3	DECK CLAMP ASY. AND DRAIN RECEIVER
	-T	THREADED OUTLET		-3C	DRAIN RECEIVER AND DRAIN RECEIVER CLIPS
	-X	INSIDE CAULK OUTLET		-12	EXT. FLASHING COLLAR, CAST IRON (SPECIFY HEIGHT **)
	-Y	HUB OUTLET WITH GASKET		-S1	SATIN FINISH BRONZE TOP
	-Z	NO-HUB SPIGOT OUTLET			
	-TSO*	DECK CLAMP ASSEMBLY AND DRAIN RECEIVER		-VP	SECURED GRATE, VANDAL-PROOF SCREWS

DATE OF LAST CHANGE: 5/04/15

DIMENSIONS ARE SUBJECT TO MANUFACTURERS
TOLERANCES AND CHANGE WITHOUT NOTICE.
WE CAN ASSUME NO RESPONSIBILITY FOR
USE OF SUPERSEDED OR VOID DATA

JOSAM COMPANY
MICHIGAN CITY, INDIANA

NOTES

⚠ WARNING: Cancer and Reproductive Harm - www.p65warnings.ca.gov

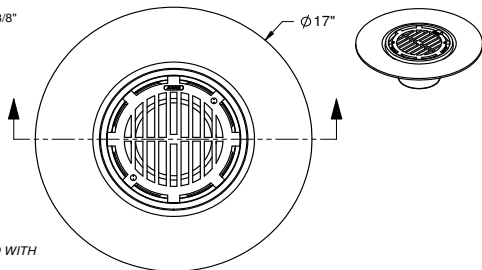
SPECIFICATION:

JOSAM SERIES 24020 COATED CAST IRON SUPER-FLO® ROOF DRAIN, ROUND MEDIUM-DUTY ANTI-TILTING GRATE WITH PERIMETER DRAINAGE SLOTS, SET IN ROUND NON-PUNCTURING MEMBRANE CLAMP RING, MEDIUM SUMP WITH WIDE DECK FLANGE AND BOTTOM INSIDE CAULK OUTLET CONNECTION.

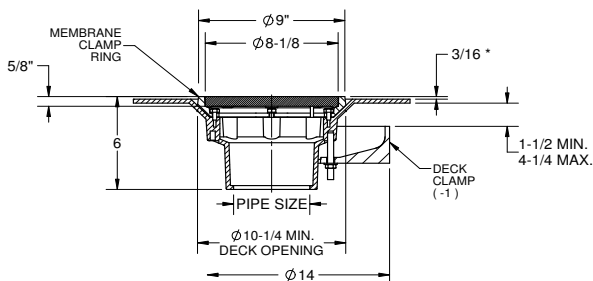
**ROOF DRAIN
COMPOSITION DECK**

SERIES **24020**

GRATE FREE AREA: 27 SQ. IN.
STD. CAST IRON SLOT WIDTH: 3/8"
-50 & -51 SLOT WIDTH: 3/16"



* ADD 1/4" WHEN FURNISHED WITH NIKALOY OR BRASS TOP



2"	PIPE SIZE	-31	CHAIN ANCHORED GRATE
3"	PIPE SIZE	-36	DUCTILE IRON GRATE (CAST IRON TOP ONLY)
4"	PIPE SIZE	-38	LESS GRATE
		-50	SATIN FINISH NIKALOY TOP
-1	DECK CLAMP ASSEMBLY	-51	SATIN FINISH BRONZE TOP
-20	GALVANIZED CAST IRON PARTS	-HP	HEEL-PROOF GRATE, CI, 5/16" SLOT WIDTH, 25 SQ. IN FREE AREA
-29	SEDIMENT BUCKET, CAST IRON	-VP	SECURED GRATE
-29-20	SEDIMENT BUCKET, GALVANIZED		
		X -X	INSIDE CAULK OUTLET

DATE OF LAST CHANGE: 12/23/14

DIMENSIONS ARE SUBJECT TO MANUFACTURERS TOLERANCES AND CHANGE WITHOUT NOTICE. WE CAN ASSUME NO RESPONSIBILITY FOR USE OF SUPERSEDED OR VOID DATA.

JOSAM COMPANY
MICHIGAN CITY, INDIANA

NOTES

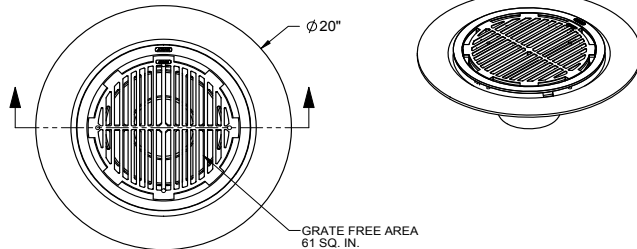
SPECIFICATION:

JOSAM SERIES 24030 COATED CAST IRON SUPER-FLO® ROOF DRAIN, ROUND MEDIUM-DUTY ANTI-TILTING GRATE WITH PERIMETER SLOTS, SET IN ROUND NON-PUNCTURING MEMBRANE CLAMP RING, LARGE SUMP WITH WIDE DECK FLANGE AND BOTTOM INSIDE CAULK OUTLET CONNECTION.

**ROOF DRAIN
COMPOSITION DECK**

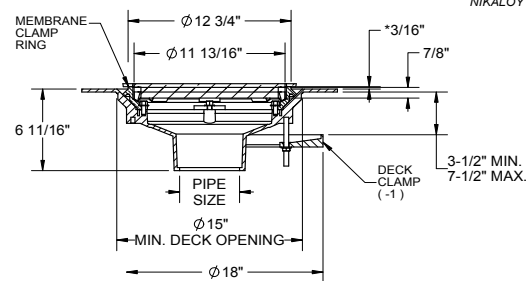
SERIES **24030**

SLOT WIDTH 9/16" (-50 & -51 SLOT WIDTH 7/16")



GRATE FREE AREA
61 SQ. IN.

* ADD 1/4" WHEN FURNISHED WITH NIKALOY OR BRASS TOP



4"	PIPE SIZE	-31	CHAIN ANCHORED GRATE
5"	PIPE SIZE	-36	DUCTILE IRON GRATE (CAST IRON TOP ONLY)
6"	PIPE SIZE	-50	SATIN FINISH NIKALOY TOP
8"	PIPE SIZE	-51	SATIN FINISH BRONZE TOP
		-HP	HEEL-PROOF GRATE, CI, 5/16" SLOT WIDTH, 25 SQ. IN FREE AREA
-1	DECK CLAMP ASSEMBLY	-VP	SECURED GRATE
-20	GALVANIZED CAST IRON PARTS		
-29	SEDIMENT BUCKET, CAST IRON	X -X	INSIDE CAULK OUTLET
-20-29	SEDIMENT BUCKET, GALVANIZED		

DATE OF LAST CHANGE: 04/23/15

DIMENSIONS ARE SUBJECT TO MANUFACTURERS TOLERANCES AND CHANGE WITHOUT NOTICE. WE CAN ASSUME NO RESPONSIBILITY FOR USE OF SUPERSEDED OR VOID DATA.

JOSAM COMPANY
MICHIGAN CITY, INDIANA

NOTES

SPECIFICATION:

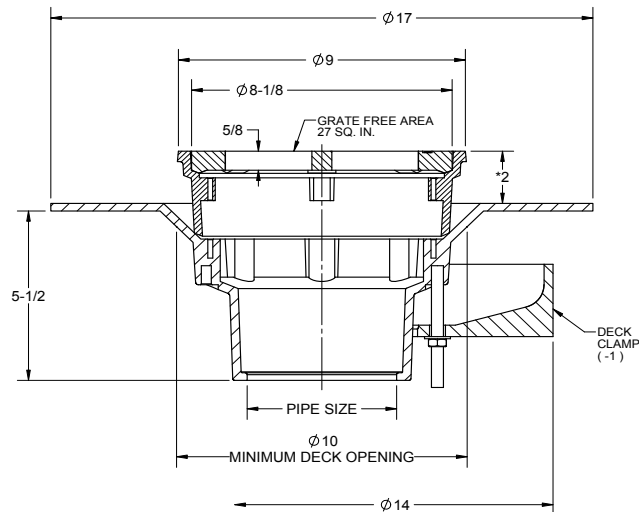
JOSAM SERIES 24040 COATED CAST IRON SUPER-FLO® ROOF DRAIN, ROUND MEDIUM-DUTY ANTI-TILTING GRATE WITH PERIMETER DRAINAGE SLOTS, EXTENSION, MEDIUM SUMP WITH WIDE DECK FLANGE AND BOTTOM INSIDE CAULK OUTLET CONNECTION.

**ROOF DRAIN
COMPOSITION DECK**

SERIES **24040**

SLOT WIDTH 3/8" (-50 & -51 SLOT WIDTH 3/16")

* ADD 1/4" WHEN FURNISHED WITH
NIKALOY OR BRASS TOP



2"	PIPE SIZE	-36	DUCTILE IRON GRATE (CAST IRON TOP ONLY)
3"	PIPE SIZE	-38	LESS GRATE
4"	PIPE SIZE	-50	SATIN FINISH NIKALOY TOP
		-51	SATIN FINISH BRONZE TOP
-1	DECK CLAMP ASSEMBLY		
-20	GALVANIZED CAST IRON PARTS	-VP	SECURED GRATE
-29	SEDIMENT BUCKET, CAST IRON		
-29-20	SEDIMENT BUCKET, GALVANIZED	X	-X
-31	CHAIN ANCHORED GRATE		

DATE OF LAST CHANGE: 8/26/2011

DIMENSIONS ARE SUBJECT TO MANUFACTURERS
TOLERANCES AND CHANGE WITHOUT NOTICE.
WE CAN ASSUME NO RESPONSIBILITY FOR
USE OF SUPERSEDED OR VOID DATA.

JOSAM COMPANY
MICHIGAN CITY, INDIANA

NOTES

SPECIFICATION:

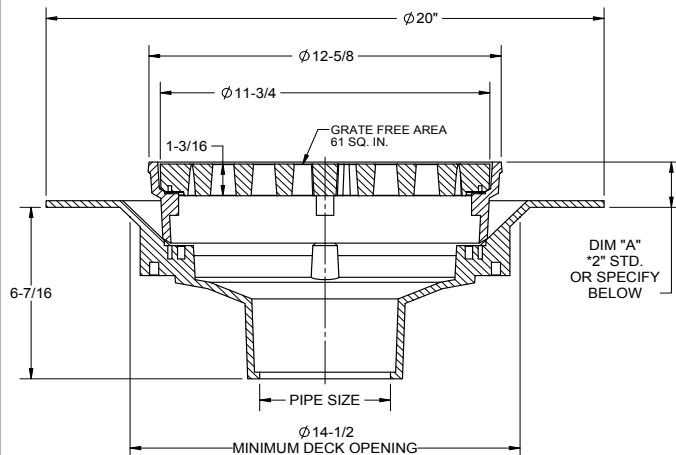
JOSAM SERIES 24050 COATED CAST IRON GARAGE DRAIN WITH WIDE SUPPORT FLANGE, WEEPHOLES, ROUND SPECIAL-DUTY GRATE AND BOTTOM OUTLET INSIDE CAULK CONNECTION.

**DRAIN
SPECIAL-DUTY, FLAT GRATE**

SERIES **24050**

SLOT WIDTH 1/2" (-50 & -51 SLOT WIDTH 1/4")

ADD 1/4" WHEN FURNISHED WITH
NIKALOY OR BRASS TOP



* "A" DIM. = _____

4"	PIPE SIZE	-31	CHAIN ANCHORED GRATE
6"	PIPE SIZE	-36	DUCTILE IRON GRATE (CAST IRON TOP ONLY)
8"	PIPE SIZE	-50	SATIN FINISH NIKALOY TOP
		-51	SATIN FINISH BRASS TOP
-1	DECK CLAMP ASSEMBLY		
-12 *	EXTENDED FLASHING COLLAR, CAST IRON (SPECIFY HEIGHT)	-VP	SECURED GRATE
-20	GALVANIZED CAST IRON PARTS		
-29	SEDIMENT BUCKET, CAST IRON	X	-X
-29-20	SEDIMENT BUCKET, GALVANIZED		

DATE OF LAST CHANGE: 8/26/2011

DIMENSIONS ARE SUBJECT TO MANUFACTURERS
TOLERANCES AND CHANGE WITHOUT NOTICE.
WE CAN ASSUME NO RESPONSIBILITY FOR
USE OF SUPERSEDED OR VOID DATA.

JOSAM COMPANY
MICHIGAN CITY, INDIANA

NOTES

SPECIFICATION:

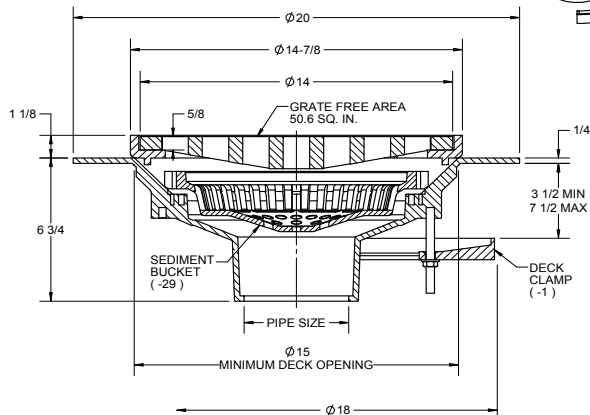
JOSAM SERIES 24060 COATED CAST IRON ROOF DRAIN, ROUND SPECIAL-DUTY GRATE, LARGE SUMP WITH WIDE DECK FLANGE AND BOTTOM INSIDE CAULK OUTLET CONNECTION.

**ROOF DRAIN
COMPOSITION DECK**

SERIES **24060**

SLOT WIDTH 1-3/16 SQUARE

* ADD 1/4" WHEN FURNISHED WITH NIKALOY OR BRASS TOP



4"	PIPE SIZE	-31	CHAIN ANCHORED GRATE
6"	PIPE SIZE	-50	SATIN FINISH NIKALOY TOP
8"	PIPE SIZE	-51	SATIN FINISH BRONZE TOP
-1	DECK CLAMP ASSEMBLY	-VP	SECURED GRATE
-20	GALVANIZED CAST IRON PARTS		
-29	SEDIMENT BUCKET, CAST IRON	X	-X
-29-20	SEDIMENT BUCKET, GALVANIZED		

DATE OF LAST CHANGE: 5/04/15

DIMENSIONS ARE SUBJECT TO MANUFACTURERS TOLERANCES AND CHANGE WITHOUT NOTICE. WE CAN ASSUME NO RESPONSIBILITY FOR USE OF SUPERSEDED OR VOID DATA.

JOSAM COMPANY
MICHIGAN CITY, INDIANA

NOTES

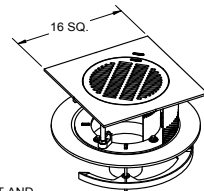
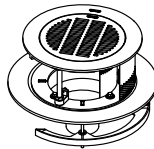
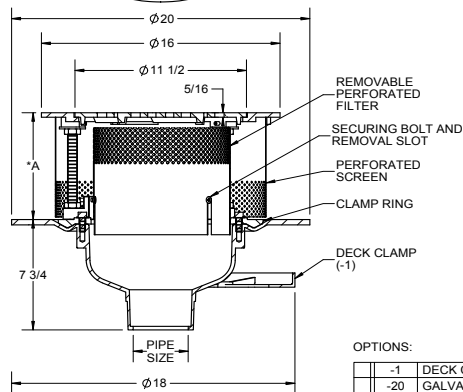
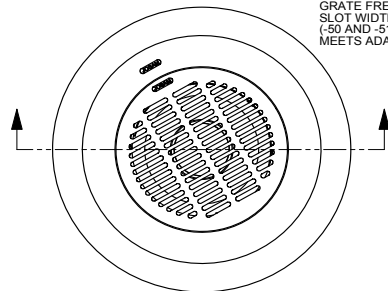
SPECIFICATION:

JOSAM SERIES 24200 COATED CAST IRON ADJUSTABLE "ALL-LEVEL" DRAIN, ROUND PEDESTRIAN GRATE SET IN ROUND ANCHORED FRAME LEVELLED ON ADJUSTABLE THREADED RODS, REMOVABLE PERFORATED STAINLESS STEEL FILTER, CONCRETE FORMING AND RETAINING RING, CAST IRON NON-PUNCTURING CLAMP RING, LARGE SUMP WITH WIDE FLANGE AND BOTTOM OUTLET INSIDE-CAULK (-X TYPE) CONNECTION.

**DRAIN
PROMENADE TOP
WIDE FLANGE**

SERIES **24200**

GRATE FREE AREA: 30.2 SQ. IN.
SLOT WIDTH: 3/16"
(-50 AND -51 SLOT WIDTH: 1/4" IN)
MEETS ADA AND HEEL-PROOF REQS.



PIPE SIZE
2"
3"
4"
5"
6"

OPTIONS:

-1	DECK CLAMP ASSY
-20	GALVANIZED CAST IRON PARTS
-50	SATIN FINISH NIKALOY TOP
-51	SATIN FINISH BRONZE TOP
-60	SQUARE TOP

* "A" DIM. = (3" STD., 12" MAX.)

DATE OF LAST CHANGE: 4/23/15

DIMENSIONS ARE SUBJECT TO MANUFACTURERS TOLERANCES AND CHANGE WITHOUT NOTICE. WE CAN ASSUME NO RESPONSIBILITY FOR USE OF SUPERSEDED OR VOID DATA.

JOSAM COMPANY
MICHIGAN CITY, INDIANA

NOTES

SPECIFICATION:

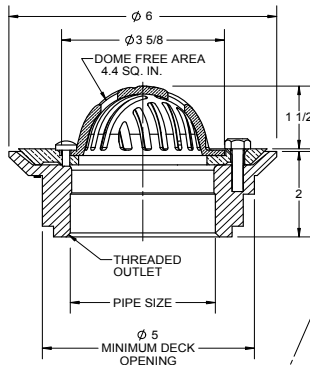
JOSAM SERIES 24500 COATED CAST IRON SILL DRAIN, SECURED LOW BRONZE DOME, BRONZE CLAMP RING, & SHALLOW SUMP WITH FLASHING FLANGE AND BOTTOM THREADED OUTLET CONNECTION.

ROOF DRAIN

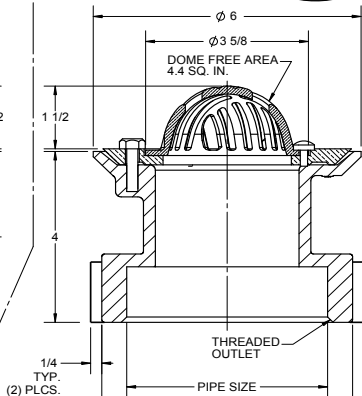
SILL TYPE WITH BRONZE DOME

SERIES

24500



2" & 3" THREADED OUTLET



4" THREADED OUTLET

▼ SEPARATE SUBMITTAL FOR THIS OPTION AVAILABLE

	2"	PIPE SIZE		-33	STAINLESS STEEL MESH COVERED DOME
	3"	PIPE SIZE	▼	-35	FLAT GRATE (SLOT WIDTH 3/16")
	4"	PIPE SIZE	▼	-45	BODY WITH 45° THREADED OUTLET
				-50	SATIN FINISH NIKALOY TOP
	-20	GALVANIZED CAST IRON PARTS		-51	SATIN FINISH BRONZE TOP
	-24	ROUGH NIKALOY DOME	▼	-90	BODY WITH 90° THREADED OUTLET
▼	-27	HIGH DOME		-VP	SECURED DOME

DATE OF LAST CHANGE: 5/04/15

DIMENSIONS ARE SUBJECT TO MANUFACTURERS TOLERANCES AND CHANGE WITHOUT NOTICE. WE CAN ASSUME NO RESPONSIBILITY FOR USE OF SUPERSEDED OR VOID DATA.

JOSAM COMPANY
MICHIGAN CITY, INDIANA

NOTES

SPECIFICATION:

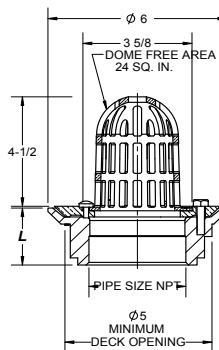
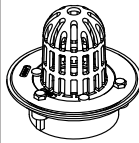
JOSAM SERIES 24500-27 COATED CAST IRON SILL DRAIN, SECURED TALL BRONZE DOME, BRONZE CLAMP RING AND SHALLOW SUMP WITH FLASHING FLANGE AND BOTTOM THREADED OUTLET CONNECTION.

ROOF DRAIN

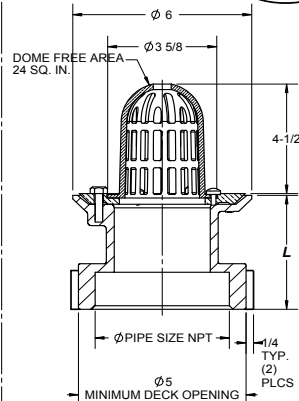
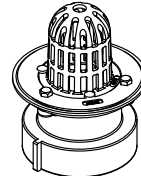
SILL TYPE WITH TALL DOME

SERIES

24500-27



2" & 3" THREADED OUTLET



4" THREADED OUTLET

	2"	PIPE SIZE		-20	GALVANIZED CAST IRON PARTS
	3"	PIPE SIZE		-24	ROUGH NIKALOY DOME
	4"	PIPE SIZE		-33	STAINLESS STEEL MESH COVERED DOME
				-45	BODY WITH 45° THREADED OUTLET
				-90	BODY WITH 90° THREADED OUTLET
	MODEL	DIM. "L"			
	24502-27	2			
	24503-27	2			
	24504-27	4		-VP	VANDAL-RESISTANT DOME

DATE OF LAST CHANGE: 5/04/15

DIMENSIONS ARE SUBJECT TO MANUFACTURERS TOLERANCES AND CHANGE WITHOUT NOTICE. WE CAN ASSUME NO RESPONSIBILITY FOR USE OF SUPERSEDED OR VOID DATA.

JOSAM COMPANY
MICHIGAN CITY, INDIANA

NOTES

! WARNING: Cancer and Reproductive Harm - www.p65warnings.ca.gov

SPECIFICATION:

JOSAM SERIES 24500-35 COATED CAST IRON SILL DRAIN, SECURED GRATE, BRONZE CLAMP RING & SHALLOW SUMP WITH FLASHING FLANGE AND BOTTOM THREADED OUTLET CONNECTION.

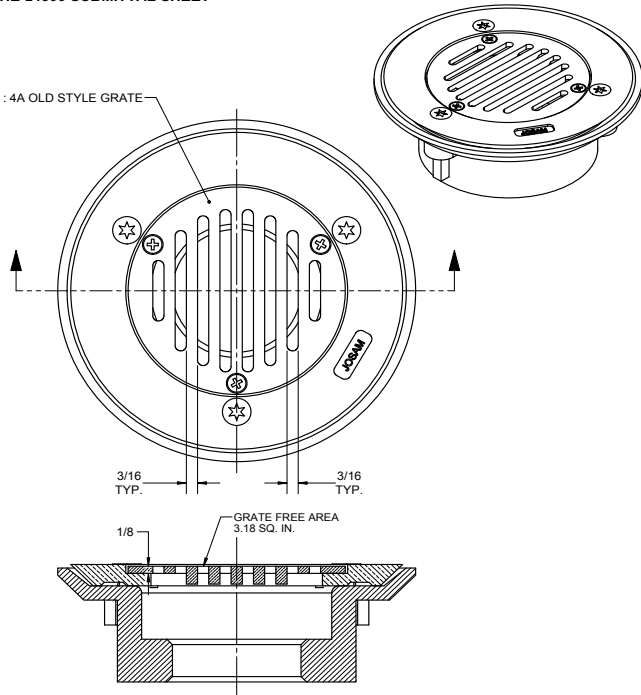
ROOF DRAIN

SILL TYPE WITH BRONZE GRATE

SERIES **24500-35**

FOR FURTHER DETAILS OF THE 24500 DRAIN ASSEMBLY, PLEASE REFERENCE THE 24500 SUBMITTAL SHEET

005315 : 4A OLD STYLE GRATE



DATE OF LAST CHANGE: 4/23/15

DIMENSIONS ARE SUBJECT TO MANUFACTURERS TOLERANCES AND CHANGE WITHOUT NOTICE. WE CAN ASSUME NO RESPONSIBILITY FOR USE OF SUPERSEDED OR VOID DATA.

JOSAM COMPANY
MICHIGAN CITY, INDIANA

NOTES

SPECIFICATION:

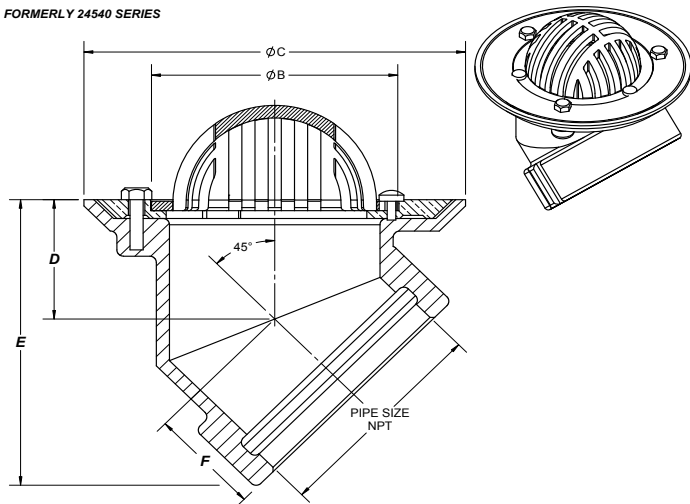
JOSAM SERIES 24500-45 SERIES COATED CAST IRON SILL DRAIN, SECURED BRONZE DOME CLAMP RING AND SHALLOW SUMP WITH FLASHING FLANGE AND 45° SIDE THREADED OUTLET CONNECTION.

ROOF DRAIN

SILL TYPE WITH BRONZE DOME

SERIES **24500-45**

FORMERLY 24540 SERIES



MODEL NO.	DIA. "B"	DIA. "C"	DIM. "D"	DIM. "E"	DIM. "F"	DIM. "H"	DOMES FREE AREA
24502-45	3-3/4	6	1-1/2	4-1/2	2-3/4	1-1/2	4.4 SQ. IN.
24503-45	4-3/4	7-1/4	1-1/2	4-3/4	2-3/4	1-7/8	7.3 SQ. IN.
24504-45	4-3/4	7-1/4	2-3/8	5-5/8	2-1/8	1-7/8	7.3 SQ. IN.

2"	PIPE SIZE	-33	STAINLESS STEEL MESH COVERED DOME
3"	PIPE SIZE	-35	FLAT GRATE (SLOT WIDTH 3/16")
4"	PIPE SIZE	-45	BOLTED FLASHING CLAMP DEVICE
		-50	SATIN FINISH NIKALOY TOP
-20	GALVANIZED CAST IRON PARTS	-51	SATIN FINISH BRONZE TOP
-24	ROUGH NIKALOY DOME		
-27	TALL DOME	-VP	VANDAL-RESISTANT DOME

DATE OF LAST CHANGE: 5/04/15

DIMENSIONS ARE SUBJECT TO MANUFACTURERS TOLERANCES AND CHANGE WITHOUT NOTICE. WE CAN ASSUME NO RESPONSIBILITY FOR USE OF SUPERSEDED OR VOID DATA.

JOSAM COMPANY
MICHIGAN CITY, INDIANA

NOTES

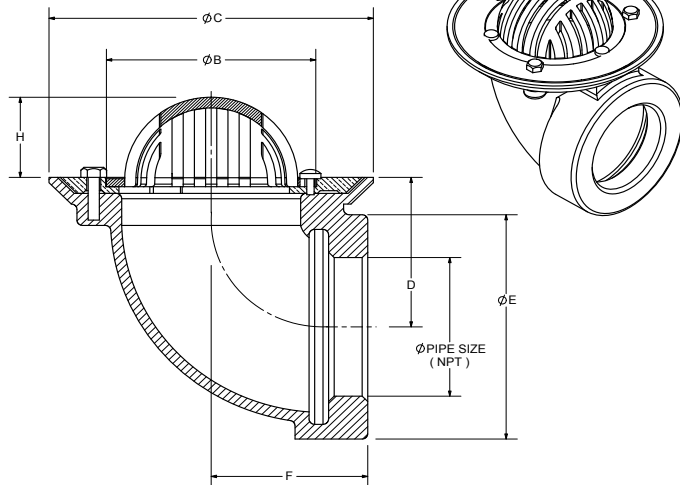
SPECIFICATION:

JOSAM SERIES 24500-90 COATED CAST IRON SILL DRAIN, SECURED LOW BRONZE DOME, BRONZE CLAMP RING AND SHALLOW SUMP WITH FLASHING FLANGE AND SIDE THREADED OUTLET CONNECTION.

ROOF DRAIN

SILL TYPE WITH BRONZE DOME

SERIES **24500-90**



PIPE SIZE	Ø "B"	Ø "C"	DIM. "D"	DIM. "E"	DIM. "F"	DIM. "H"	FREE AREA
2"	3-3/4	6	2-1/2	4	2-3/4	1-1/2	4.4 SQ. IN.
3"	4-3/4	7-1/4	3	5	3-1/2	1-7/8	7.3 SQ. IN.
4"	4-3/4	7-1/4	3-1/2	6	3-1/2	1-7/8	7.3 SQ. IN.

X	-90	THREADED OUTLET BODY	-35	FLAT GRATE (3/16" SLOT WIDTH)
	-20	GALVANIZED CAST IRON PARTS	-50	SATIN FINISH NIKALOY TOP
	-24	ROUGH NIKALOY DOME	-51	SATIN FINISH BRONZE TOP
	-27	TALL DOME		
	-33	STAINLESS STEEL MESH COVERED DOME	-VP	VANDAL-RESISTANT DOME

DATE OF LAST CHANGE: 5/04/15

DIMENSIONS ARE SUBJECT TO MANUFACTURERS TOLERANCES AND CHANGE WITHOUT NOTICE. WE CAN ASSUME NO RESPONSIBILITY FOR USE OF SUPERSEDED OR VOID DATA.

JOSAM COMPANY
MICHIGAN CITY, INDIANA

NOTES

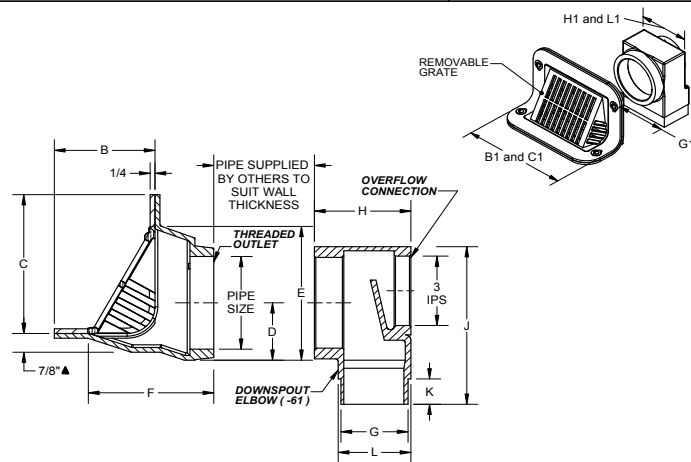
SPECIFICATION:

JOSAM 24700 SERIES COATED CAST IRON PARAPET TYPE ROOF DRAIN, REMOVABLE SLOPING BRONZE GRATE, FLASHING CLAMP, SHALLOW SUMP WITH FLASHING FLANGE AND SIDE OUTLET THREADED CONNECTION.

ROOF DRAIN

PARAPET TYPE, SLOPING GRATE

SERIES **24700**



▲ DIM. 1-1/2 ON 5" & 6" SIZES

PIPE SIZE	B x B1	C x C1	D	E	F	G x G1	H x H1	J	K	L x L1	GRATE FREE AREA
2"	4-1/2 x 11	6-1/2 x 11	1-1/2	6-3/8	5-5/8	3 x 5-1/8	4-1/8 x 5-1/4	7-3/8	1-1/4	3-1/4 x 5-1/4	19.5 SQ. IN.
3"	4-1/2 x 11	6-1/2 x 11	2-1/8	6-3/8	5-5/8	3 x 5-1/8	4-1/8 x 5-1/4	7-3/8	1-1/4	3-1/4 x 5-1/4	19.5 SQ. IN.
4"	4-1/2 x 11	6-1/2 x 11	2-5/8	6-3/8	5-5/8	3 x 5-1/8	4-1/8 x 5-1/4	7-3/8	1-1/4	3-1/4 x 5-1/4	19.5 SQ. IN.
5"	5-1/2 x 13	7-1/2 x 13	3-1/2	8-1/8	6-5/8	4 x 6-1/8	5 x 7-1/2	10-3/4	1-3/4	4-1/4 x 7-1/2	34.3 SQ. IN.
6"	5-1/2 x 13	7-1/2 x 13	3-1/2	8-1/8	6-5/8	4 x 6-1/8	5 x 7-1/2	10-3/4	1-3/4	4-1/4 x 7-1/2	34.3 SQ. IN.

	2"	PIPE SIZE	-22	CAST IRON GRATE
	3"	PIPE SIZE	-24	ROUGH NIKALOY GRATE
	4"	PIPE SIZE	-45	BODY WITH 45° THREADED OUTLET
	5"	PIPE SIZE	-50	SATIN FINISH NIKALOY GRATE
	6"	PIPE SIZE	-51	SATIN FINISH BRONZE GRATE
			-61	DOWNSPOUT ELBOW (CAST IRON)
	-20	GALVANIZED CAST IRON PARTS	-61-20	DOWNSPOUT ELBOW (GALVANIZED)

DATE OF LAST CHANGE: 04/15/15

DIMENSIONS ARE SUBJECT TO MANUFACTURERS TOLERANCES AND CHANGE WITHOUT NOTICE. WE CAN ASSUME NO RESPONSIBILITY FOR USE OF SUPERSEDED OR VOID DATA.

JOSAM COMPANY
MICHIGAN CITY, INDIANA

NOTES

⚠ WARNING: Cancer and Reproductive Harm - www.p65warnings.ca.gov

SPECIFICATION:

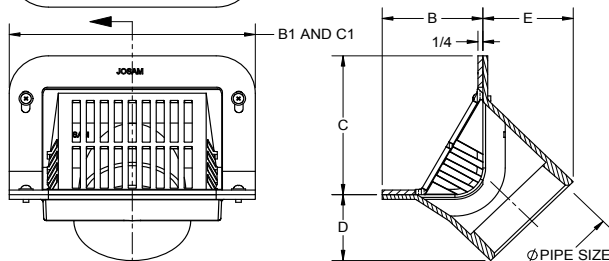
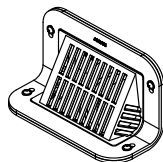
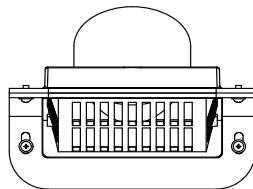
JOSAM 24700-45 SERIES COATED CAST IRON PARAPET TYPE ROOF DRAIN, REMOVABLE SLOPING BRONZE GRATE, FLASHING CLAMP, SHALLOW SUMP WITH FLASHING AND 45° SIDE OUTLET THREADED CONNECTION.

ROOF DRAIN

PARAPET TYPE, SLOPING GRATE

SERIES **24700-45**

FORMERLY 24710 SERIES



PIPE SIZE	B x B1	C x C1	D	E	GRATE FREE AREA
2"	4-1/2 x 11	6-1/2 x 11	2-1/4	3-7/8	19.5 SQ. IN.
3"	4-1/2 x 11	6-1/2 x 11	2-5/8	4-1/4	19.5 SQ. IN.
4"	4-1/2 x 11	6-1/2 x 11	3	4-5/8	19.5 SQ. IN.
5"	5-1/2 x 13	7-1/2 x 13	3-1/2	5	34.3 SQ. IN.
6"	5-1/2 x 13	7-1/2 x 13	3-5/8	5-1/2	34.3 SQ. IN.

2"	PIPE SIZE	-22	CAST IRON GRATE
3"	PIPE SIZE	-24	ROUGH NIKALOY GRATE
4"	PIPE SIZE	-45	BODY WITH 45° THREADED OUTLET
5"	PIPE SIZE	-50	SATIN FINISH NIKALOY GRATE
6"	PIPE SIZE	-51	SATIN FINISH BRONZE GRATE
		-61	DOWNSPOUT ELBOW (CAST IRON)
		-61-20	DOWNSPOUT ELBOW (GALVANIZED)
		-20	GALVANIZED CAST IRON PARTS

DATE OF LAST CHANGE: 04/27/15

DIMENSIONS ARE SUBJECT TO MANUFACTURERS TOLERANCES AND CHANGE WITHOUT NOTICE. WE CAN ASSUME NO RESPONSIBILITY FOR USE OF SUPERSEDED OR VOID DATA.

JOSAM COMPANY
MICHIGAN CITY, INDIANA

NOTES

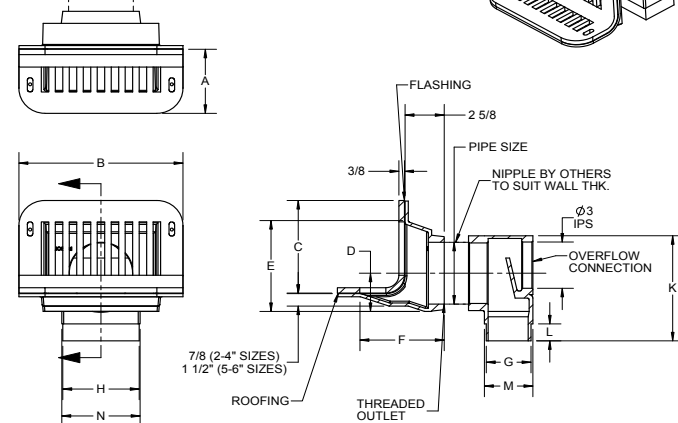
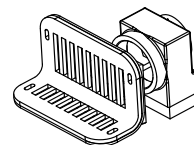
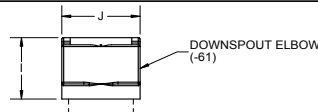
SPECIFICATION:

JOSAM 24720 SERIES COATED CAST IRON PARAPET TYPE ROOF DRAIN, SECURED ANGLE GRATE WITH FLASHING CLAMP, SHALLOW SUMP WITH FLASHING FLANGE AND SIDE OUTLET THREADED CONNECTION.

ROOF DRAIN

PARAPET TYPE, ANGLE GRATE

SERIES **24720**



PIPE SIZE	A	B	C	D	E	F	G	H	I	J	K	L	M	N	GRATE FREE AREA
2"	4-1/2	11	6-1/2	1-1/2	6-3/8	5-5/8	3	5-1/8	4-1/8	5-1/4	7-3/8	1-1/4	3-1/4	5-1/4	25.9
3"	4-1/2	11	6-1/2	2-1/8	6-3/8	5-5/8	3	5-1/8	4-1/8	5-1/4	7-3/8	1-1/4	3-1/4	5-1/4	25.9
4"	4-1/2	11	6-1/2	2-5/8	6-3/8	5-5/8	3	5-1/8	4-1/8	5-1/4	7-3/8	1-1/4	3-1/4	5-1/4	25.9
5"	5-1/2	13	7-1/2	3-1/2	8-1/8	6-5/8	4	6-1/8	5	7-1/2	10-3/4	1-3/4	4-1/4	7-1/2	41.3
6"	5-1/2	13	7-1/2	3-1/2	8-1/8	6-5/8	4	6-1/8	5	7-1/2	10-3/4	1-3/4	4-1/4	7-1/2	41.3

-45	BODY WITH 45° THREADED OUTLET Δ
-20	GALVANIZED CAST IRON PARTS
-23	ROUGH BRONZE GRATE
-24	ROUGH NIKALOY GRATE

Δ SEPARATE SUBMITTAL FOR THIS OPTION AVAILABLE

-50	SATIN FINISH NIKALOY GRATE
-51	SATIN FINISH BRONZE GRATE
-61	DOWNSPOUT ELBOW (CAST IRON)
-61-20	DOWNSPOUT ELBOW (GALVANIZED)
-VP	VANDAL-PROOF GRATE

DATE OF LAST CHANGE: 4/23/15

DIMENSIONS ARE SUBJECT TO MANUFACTURERS TOLERANCES AND CHANGE WITHOUT NOTICE. WE CAN ASSUME NO RESPONSIBILITY FOR USE OF SUPERSEDED OR VOID DATA.

JOSAM COMPANY
MICHIGAN CITY, INDIANA

NOTES

SPECIFICATION:

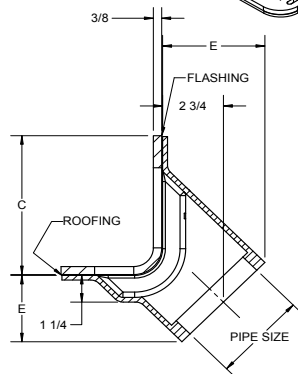
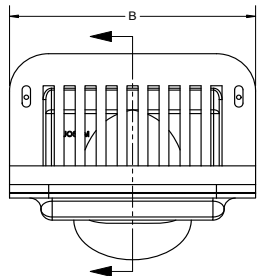
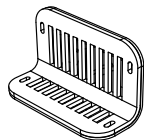
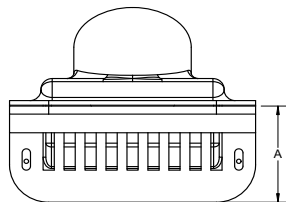
JOSAM 24720-45 SERIES COATED CAST IRON PARAPET TYPE ROOF DRAIN, SECURED ANGLE GRATE WITH FLASHING CLAMP, SHALLOW SUMP WITH FLASHING FLANGE AND 45° SIDE OUTLET THREADED CONNECTION.

ROOF DRAIN

PARAPET TYPE, ANGLE GRATE

SERIES **24720-45**

FORMERLY 24730 SERIES



	PIPE SIZE	A	B	C	D	E	GRATE FREE AREA
	2"	4 1/2	11	6 1/2	2 1/4	3 7/8	25.9
	3"	4 1/2	11	6 1/2	2 5/8	4 1/4	25.9
	4"	4 1/2	11	6 1/2	3	4 5/8	25.9
	5"	5 1/2	13	7 1/2	3 1/2	5	41.3
	6"	5 1/2	13	7 1/2	3 5/8	5 1/2	41.3

X	-45	BODY WITH 45° THREADED OUTLET
	-20	GALVANIZED CAST IRON PARTS
	-23	ROUGH BRONZE GRATE
	-24	ROUGH NIKALOY GRATE

	-50	SATIN FINISH NIKALOY GRATE
	-51	SATIN FINISH BRONZE GRATE
	-61	DOWNSPOUT ELBOW (CAST IRON)
	-61-20	DOWNSPOUT ELBOW (GALVANIZED)
	-VP	VANDAL-PROOF GRATE

DATE OF LAST CHANGE: 4/23/15

DIMENSIONS ARE SUBJECT TO MANUFACTURERS TOLERANCES AND CHANGE WITHOUT NOTICE. WE CAN ASSUME NO RESPONSIBILITY FOR USE OF SUPERSEDED OR VOID DATA.

JOSAM COMPANY
MICHIGAN CITY, INDIANA

NOTES

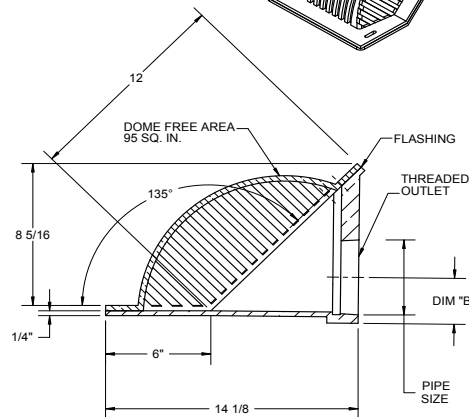
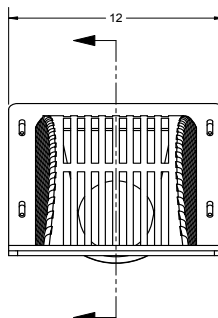
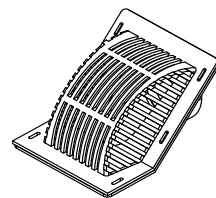
SPECIFICATION:

JOSAM 24900 SERIES COATED CAST IRON PARAPET TYPE ROOF DRAIN, SECURED BRONZE DOME WITH INTEGRAL FLASHING CLAMP, FLASHING FLANGE AND SIDE OUTLET THREADED CONNECTION.

ROOF DRAIN

ANGLE PARAPET TYPE

SERIES **24900**



	2"	PIPE SIZE	DIM "B" = 1-5/8"	-20	GALVANIZED CAST IRON PARTS
	3"	PIPE SIZE	DIM "B" = 2-3/16"	-24	ROUGH NIKALOY DOME
	4"	PIPE SIZE	DIM "B" = 2-1/16"	-50	SATIN FINISH NIKALOY DOME
	5"	PIPE SIZE	DIM "B" = 3-1/4"	-51	SATIN FINISH BRONZE DOME
	6"	PIPE SIZE	DIM "B" = 3-3/4"	-61	DOWNSPOUT ELBOW (CAST IRON)
				-61-20	DOWNSPOUT ELBOW (GALVANIZED)
				-VP	VANDAL-PROOF DOME

DATE OF LAST CHANGE: 04/27/15

DIMENSIONS ARE SUBJECT TO MANUFACTURERS TOLERANCES AND CHANGE WITHOUT NOTICE. WE CAN ASSUME NO RESPONSIBILITY FOR USE OF SUPERSEDED OR VOID DATA.

JOSAM COMPANY
MICHIGAN CITY, INDIANA

NOTES

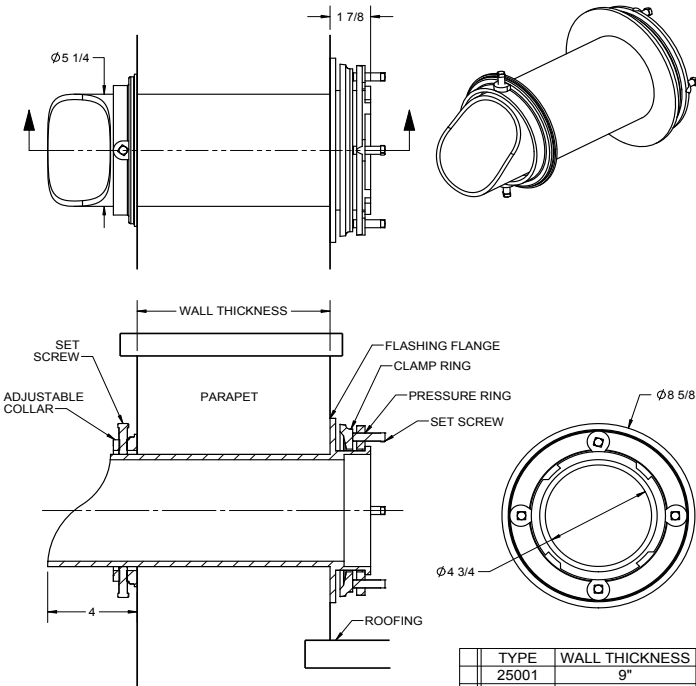
⚠ WARNING: Cancer and Reproductive Harm - www.p65warnings.ca.gov

SPECIFICATION:

JOSAM 25000 SERIES COATED CAST IRON ROOF DRAIN, PARAPET SCUPPER SLEEVE TYPE, FLASHING CLAMP, TUBULAR BODY WITH FLASHING FLANGE AND ADJUSTABLE COLLAR.

**ROOF DRAIN
PARAPET SCUPPER SLEEVE**

SERIES **25000**



[-20] GALVANIZED CAST IRON PARTS

TYPE	WALL THICKNESS
25001	9"
25002	13"
25003	17"
25004	21"

DATE OF LAST CHANGE: 4/23/15

DIMENSIONS ARE SUBJECT TO MANUFACTURERS TOLERANCES AND CHANGE WITHOUT NOTICE. WE CAN ASSUME NO RESPONSIBILITY FOR USE OF SUPERSEDED OR VOID DATA.

JOSAM COMPANY
MICHIGAN CITY, INDIANA

NOTES

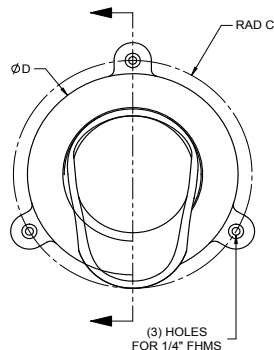
SPECIFICATION:

JOSAM 25010-T SERIES COATED CAST BRONZE DOWNSPOUT NOZZLE, LOOSE WALL FLANGE AND INLET THREADED CONNECTION.

**ROOF DRAIN
DOWNSPOUT NOZZLE**

SERIES **25010-T**

	TYPE	PIPE SIZE	B	C	D
	25012-T	2"	4	3 3/8	6
	25013-T	3"	4	3 3/8	6
	25014-T	4"	5	3 7/8	7
	25015-T	5"	7 1/2	4 7/8	9
	25016-T	6"	7 1/2	4 7/8	9
	25018-T	8"	9 5/8	5 7/8	11
	25019-T	10"	11 1/4	6 3/4	12 3/4



	-24	ROUGH NIKALOY (NICKEL-BRONZE)
	-51	SATIN FINISH BRONZE
	-BS	BIRD SCREEN
	-PVC	CONNECTS TO PVC PIPE
	-Z	NO-HUB OUTLET

*FOR 2" SIZE, FURNISHED WITH 3" BODY WITH 3" X 2"
FOR 5" SIZE, FURNISHED WITH 6" BODY WITH 6" X 5"

DATE OF LAST CHANGE: 4/23/15

DIMENSIONS ARE SUBJECT TO MANUFACTURERS TOLERANCES AND CHANGE WITHOUT NOTICE. WE CAN ASSUME NO RESPONSIBILITY FOR USE OF SUPERSEDED OR VOID DATA.

JOSAM COMPANY
MICHIGAN CITY, INDIANA

NOTES

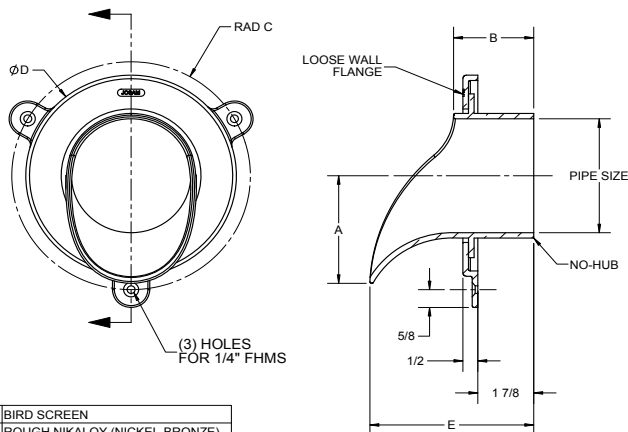
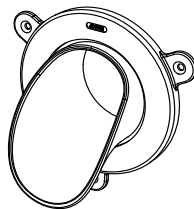
SPECIFICATION:

JOSAM 25010-Z SERIES COATED CAST BRONZE DOWNSPOUT NOZZLE, LOOSE WALL FLANGE AND NO-HUB INLET CONNECTION.

ROOF DRAIN DOWNSPOUT NOZZLE

SERIES **25010-Z**

TYPE	PIPE SIZE	A	B	C	D	E
25012-Z	2"	2 3/8	2 5/8	3	5 1/2	5 3/8
25013-Z	3"	3 3/8	2 5/8	3 1/2	6 1/2	5 3/8
25014-Z	4"	3 3/4	2 5/8	4	7 1/2	5 1/2
25015-Z	5"	4 1/4	2 5/8	4 1/2	8 1/2	5 3/4
25016-Z	6"	4 3/4	2 5/8	5	9 1/2	5 3/7
25018-Z	8"	5 7/8	2 5/8	6	11 1/2	6 1/2
25019-Z	10"	6 7/8	3	6 7/8	13	6 1/2
25010-12-Z	12"	7 7/8	3	7 7/8	15	6 1/2



<input type="checkbox"/>	-BS	BIRD SCREEN
<input type="checkbox"/>	-24	ROUGH NIKALOY (NICKEL-BRONZE)
<input type="checkbox"/>	-51	SATIN FINISH BRONZE
<input type="checkbox"/>	-T	THREADED OUTLET
<input type="checkbox"/>	-PVC	CONNECTS TO PVC PIPE

DATE OF LAST CHANGE: 4/23/15

DIMENSIONS ARE SUBJECT TO MANUFACTURERS TOLERANCES AND CHANGE WITHOUT NOTICE. WE CAN ASSUME NO RESPONSIBILITY FOR USE OF SUPERSEDED OR VOID DATA.

JOSAM COMPANY
MICHIGAN CITY, INDIANA

NOTES

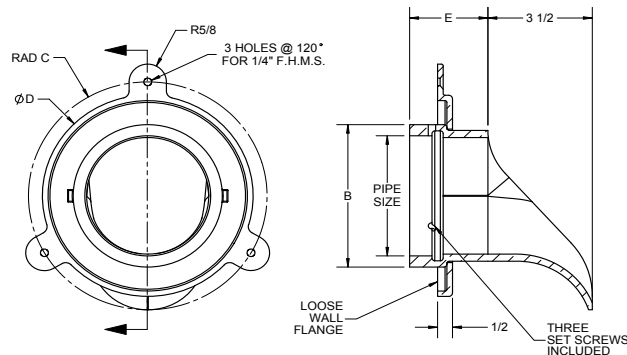
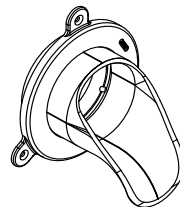
SPECIFICATION:

JOSAM 25010-PVC SERIES COATED CAST BRONZE DOWNSPOUT NOZZLE, LOOSE WALL FLANGE AND INLET CONNECTION WITH THREE SET SCREWS. CONNECTS TO PVC PIPE.

ROOF DRAIN DOWNSPOUT NOZZLE

SERIES **25010-PVC**

TYPE	PIPE SIZE	B	C	D	E
25012-PVC	2"	4	3-3/8	6	2-5/8
25013-PVC	3	4	3-3/8	6	2-5/8
25014-PVC	4	5	3-7/8	7	2-5/8
25015-PVC	5*	7-1/2	4-7/8	9	2-5/8
25016-PVC	6	7-1/2	4-7/8	9	2-5/8
25018-PVC	8	9-5/8	5-7/8	11	2-5/8
25019-PVC	10	11-1/4	6-3/4	12-3/4	2-5/8



<input type="checkbox"/>	-24	ROUGH NIKALOY
<input type="checkbox"/>	-51	SATIN FINISH BRONZE
<input type="checkbox"/>	-BS	BIRD SCREEN

DATE OF LAST CHANGE: 4/23/15

DIMENSIONS ARE SUBJECT TO MANUFACTURERS TOLERANCES AND CHANGE WITHOUT NOTICE. WE CAN ASSUME NO RESPONSIBILITY FOR USE OF SUPERSEDED OR VOID DATA.

JOSAM COMPANY
MICHIGAN CITY, INDIANA

NOTES

* FOR 2" SIZE, FURNISHED WITH 3" BODY WITH 3" X 2"
FOR 5" SIZE, FURNISHED WITH 6" BODY WITH 6" X 5"



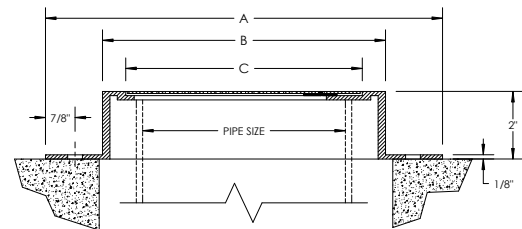
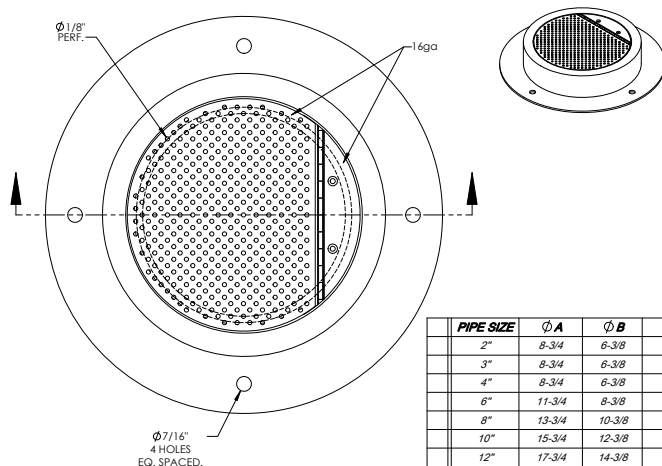
WARNING: Cancer and Reproductive Harm - www.p65warnings.ca.gov

SPECIFICATIONS:

JOSAM SERIES 25010-Q100 SPECIAL PURPOSE DOWNSPOUT COVER WITH STAINLESS STEEL FLANGE AND STAINLESS STEEL PERFORATED HINGED COVER.

**SPECIAL PURPOSE
DOWNSPOUT COVER**

25010-Q100



DATE OF LAST CHANGE: 5/6/2011

JOSAM COMPANY
MICHIGAN CITY, INDIANA

NOTES:

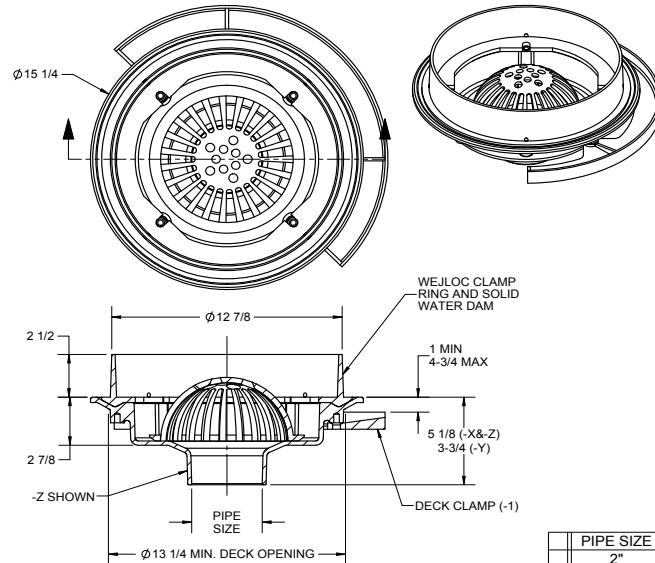
DIMENSIONS ARE SUBJECT TO MANUFACTURERS TOLERANCES AND MAY CHANGE WITHOUT NOTICE. WE ASSUME NO RESPONSIBILITY FOR USE OF SUPERSEDED OR VOID DATA.

SPECIFICATION:

JOSAM 25500 SERIES COATED CAST IRON FLO-SEPTOR® ROOF DRAIN, CAST IRON INTERNAL DOME STRAINER, COMBINED WEJLOC® NON-PUNCTURING CLAMP RING AND SOLID WATER DAM, LARGE SUMP WITH WIDE ROOF FLANGE AND BOTTOM OUTLET.

**ROOF DRAIN
FLO-SEPTOR® LARGE SUMP**

SERIES **25500**



*GASKET ON -Y CONNECTION
CONFORMS WITH ASTM-C564

-CR	CLAMPING DRAIN RECEIVER (MIN. DECK OPENING Φ16")	-66	NO-HUB SIDE OUTLET
-1	DECK CLAMP ASSEMBLY	-T	THREADED OUTLET
-2	DRAIN RECEIVER	-X	INSIDE CAULK OUTLET
-3	DECK CLAMP ASSEMBLY & DRAIN RECEIVER	-Y	HUB OUTLET WITH GASKET*
-20	GALVANIZED CAST IRON PARTS	-Z	NO-HUB SPIGOT OUTLET

DATE OF LAST CHANGE: 4/23/15

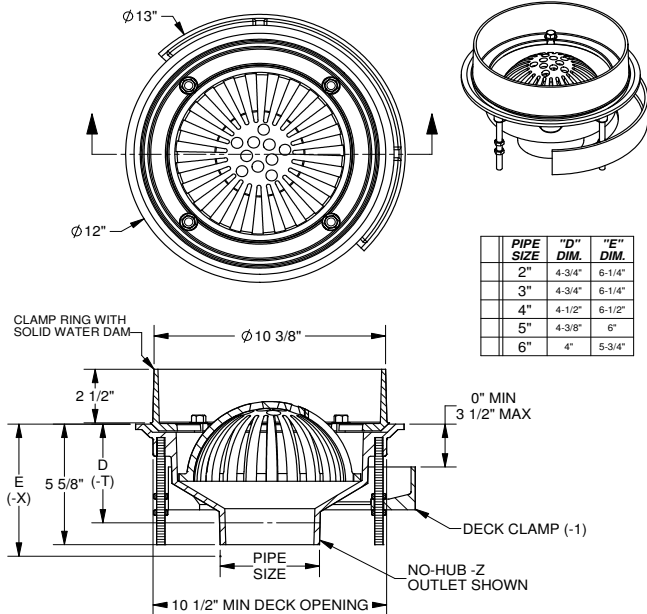
JOSAM COMPANY
MICHIGAN CITY, INDIANA

NOTES

DIMENSIONS ARE SUBJECT TO MANUFACTURERS TOLERANCES AND CHANGE WITHOUT NOTICE. WE CAN ASSUME NO RESPONSIBILITY FOR USE OF SUPERSEDED OR VOID DATA.

SPECIFICATION:

JOSAM 25520 SERIES COATED CAST IRON FLO-SEPTOR® ROOF DRAIN, CAST IRON INTERNAL DOME STRAINER, COMBINED WEJLOC® NON-PUNCTURING CLAMP RING AND SOLID WATER DAM, MEDIUM SUMP WITH ROOF FLANGE AND BOTTOM OUTLET.

ROOF DRAIN
FLO-SEPTOR® MEDIUM SUMP
SERIES 25520


PIPE SIZE	"D" DIM.	"E" DIM.
2"	4-3/4"	6-1/4"
3"	4-3/4"	6-1/4"
4"	4-1/2"	6-1/2"
5"	4-3/8"	6"
6"	4"	5-3/4"

-1	DECK CLAMP ASSEMBLY
-2	DRAIN RECEIVER
-3	DECK CLAMP ASSY & DRAIN RECEIVER
-20	GALVANIZED CAST IRON PARTS

-66	NO-HUB SIDE OUTLET
-T	THREADED OUTLET
-X	INSIDE CAULK OUTLET
-Z	NO-HUB SPIGOT OUTLET

DATE OF LAST CHANGE: 03/25/15

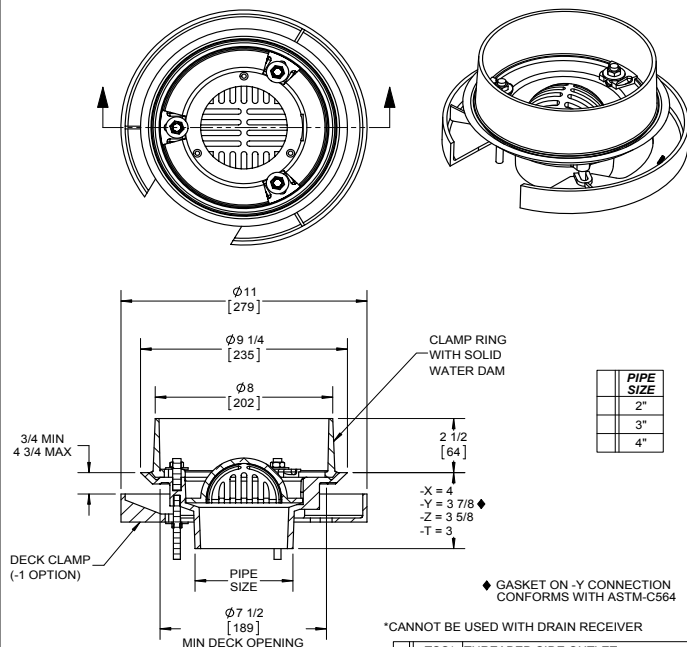
DIMENSIONS ARE SUBJECT TO MANUFACTURERS TOLERANCES AND CHANGE WITHOUT NOTICE. WE CAN ASSUME NO RESPONSIBILITY FOR USE OF SUPERSEDED OR VOID DATA.

JOSAM COMPANY
MICHIGAN CITY, INDIANA

NOTES

SPECIFICATION:

JOSAM 25540 SERIES COATED CAST IRON FLO-SEPTOR® ROOF DRAIN, CAST ALUMINUM INTERNAL DOME STRAINER, COMBINED WEJLOC® NON-PUNCTURING CLAMP RING AND SOLID WATER DAM, SMALL SUMP WITH ROOF FLANGE AND BOTTOM OUTLET.

ROOF DRAIN
FLO-SEPTOR® SMALL SUMP
SERIES 25540


PIPE SIZE
2"
3"
4"

-1	DECK CLAMP ASSEMBLY
-2	DRAIN RECEIVER
-3	DECK CLAMP ASSY & DRAIN RECEIVER
-20	GALVANIZED CAST IRON PARTS

-TSO*	THREADED SIDE OUTLET
-T	THREADED OUTLET
-X	INSIDE CAULK OUTLET
-Y	HUB OUTLET WITH GASKET**
-Z	NO-HUB SPIGOT OUTLET

*CANNOT BE USED WITH DRAIN RECEIVER

DATE OF LAST CHANGE: 04/28/15

DIMENSIONS ARE SUBJECT TO MANUFACTURERS TOLERANCES AND CHANGE WITHOUT NOTICE. WE CAN ASSUME NO RESPONSIBILITY FOR USE OF SUPERSEDED OR VOID DATA.

JOSAM COMPANY
MICHIGAN CITY, INDIANA

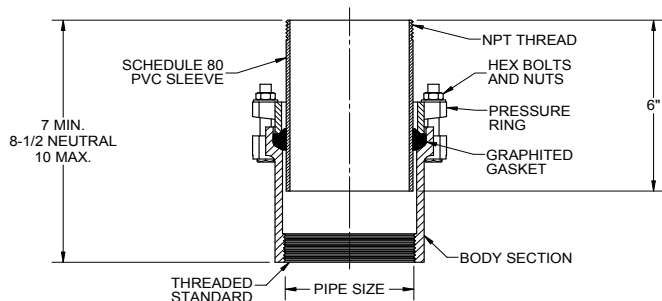
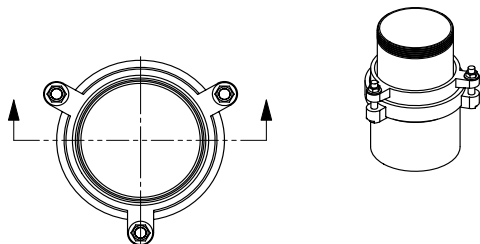
NOTES

SPECIFICATION:

JOSAM SERIES 26200 COATED CAST IRON EXPANSION JOINT, SCHEDULE 80 PVC SLEEVE, PACKING GLAND WITH BOLTED PRESSURE RING, MALE INLET AND FEMALE THREADED OUTLET CONNECTIONS.

**ROOF DRAIN
EXPANSION JOINT**

SERIES **26200**



2"	PIPE SIZE	8"	PIPE SIZE
3"	PIPE SIZE	10"	PIPE SIZE
4"	PIPE SIZE		
5"	PIPE SIZE		
6"	PIPE SIZE		
		-BR	BRASS SLEEVE
		-20	GALVANIZED CAST IRON PARTS

DATE OF LAST CHANGE: 11/03/2014
DIMENSIONS ARE SUBJECT TO MANUFACTURERS TOLERANCES AND CHANGE WITHOUT NOTICE. WE CAN ASSUME NO RESPONSIBILITY FOR USE OF SUPERSEDED OR VOID DATA.

JOSAM COMPANY
MICHIGAN CITY, INDIANA

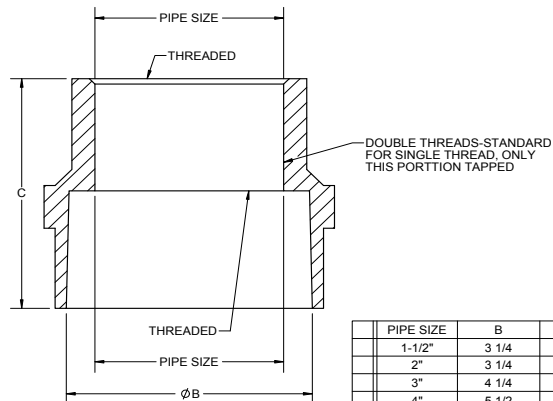
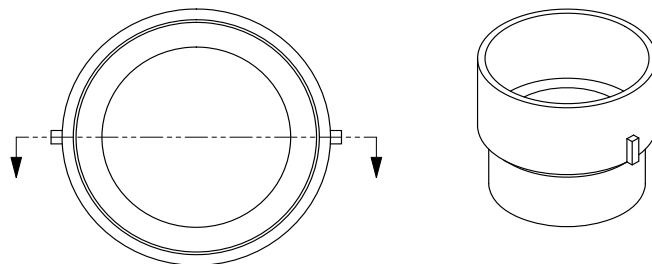
NOTES

SPECIFICATION:

JOSAM 26440 SERIES COATED CAST IRON STACK FITTING WITH COUNTER FLASHING RECESS, THREADED STACK AND EXTENSION CONNECTIONS.

**ROOF DRAIN
STACK FLASHING FITTING**

SERIES **26440**



PIPE SIZE	B	C
1-1/2"	3 1/4	5 3/8
2"	3 1/4	5 3/8
3"	4 1/4	5 3/8
4"	5 1/2	5 3/8
5"	6 1/2	5 3/8
6"	7 1/2	5 3/8

-20 GALVANIZED CAST IRON PARTS

SINGLE THREAD CAN BE FURNISHED WHEN SPECIFIED ON ORDER

DATE OF LAST CHANGE: 4/23/15

DIMENSIONS ARE SUBJECT TO MANUFACTURERS TOLERANCES AND CHANGE WITHOUT NOTICE. WE CAN ASSUME NO RESPONSIBILITY FOR USE OF SUPERSEDED OR VOID DATA.

JOSAM COMPANY
MICHIGAN CITY, INDIANA

NOTES

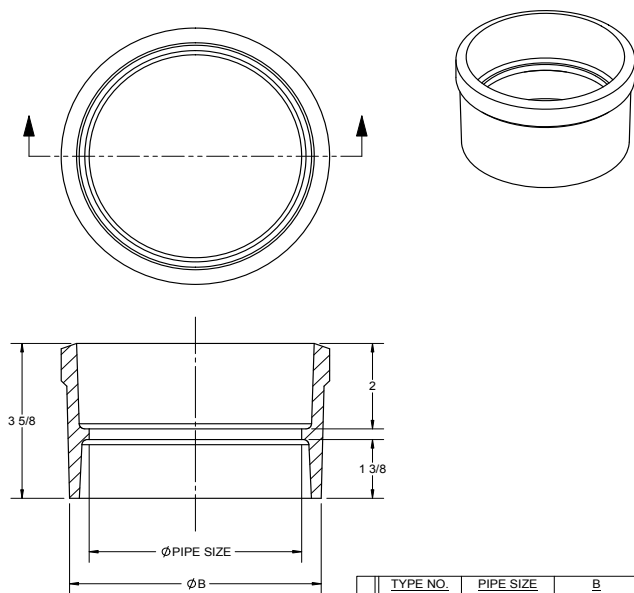
SPECIFICATION:

JOSAM 26450 SERIES COATED CAST IRON STACK SLEEVE WITH COUNTER FLASHING AND CAULKING RECESSES.

ROOF DRAIN

VENT STACK FLASHING FITTING

SERIES **26450**



TYPE NO.	PIPE SIZE	B
26451-1/2	1-1/2"	3
26452	2"	3-1/2
26453	3"	5-3/4
26454	4"	5-5/8
26455	5"	6-3/4
26456	6"	7-3/4

-20 GALVANIZED CAST IRON PARTS

DATE OF LAST CHANGE: 4/23/15

DIMENSIONS ARE SUBJECT TO MANUFACTURERS TOLERANCES AND CHANGE WITHOUT NOTICE. WE CAN ASSUME NO RESPONSIBILITY FOR USE OF SUPERSEDED OR VOID DATA.

JOSAM COMPANY
MICHIGAN CITY, INDIANA

NOTES

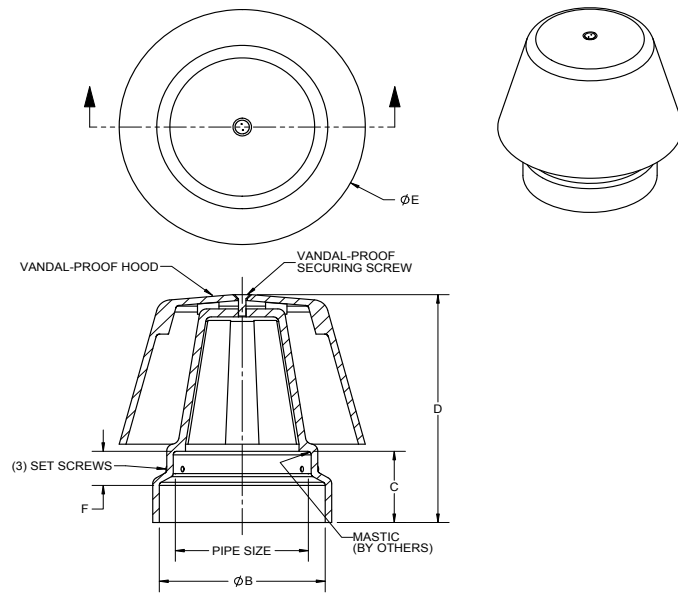
SPECIFICATION:

JOSAM 26700 SERIES COATED CAST IRON VANDAL-PROOF HOODED VENT CAP WITH LARGE FROST-PROOF OPENINGS, COUNTERFLASHING COLLAR, DEEP PROTECTIVE HOOD AND RECESSED SECURING SCREWS.

ROOF DRAIN

VANDAL-PROOF VENT CAP

SERIES **26700**



PIPE SIZE	B	C	D	E	F	FREE AREA
1-1/2	2 5/8	2	4 1/2	5 3/4	1	3.7
2	3 1/4	2	5 1/4	5 3/4	1	6.8
2-1/2	4 3/8	2 1/2	6 7/8	8 1/4	3/4	15.3
3	4 3/8	2 1/2	6 7/8	8 1/4	1 1/8	15.3
4	5 1/2	2 1/2	8	8 1/4	1 1/8	27.4
5	6 1/2	2 1/2	10 1/8	11 3/4	1 1/8	41.6
6	7 1/2	2 3/4	11 3/4	11 3/4	1 1/8	58.0

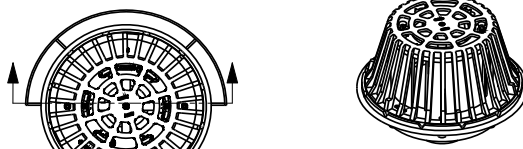
-20	GALVANIZED CAST IRON PARTS
-63	ALL ROUGH BRONZE
-65	ALL ROUGH NIKALOY

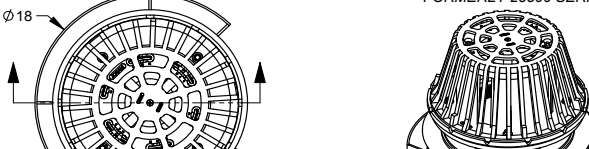
DATE OF LAST CHANGE: 4/23/15

DIMENSIONS ARE SUBJECT TO MANUFACTURERS TOLERANCES AND CHANGE WITHOUT NOTICE. WE CAN ASSUME NO RESPONSIBILITY FOR USE OF SUPERSEDED OR VOID DATA.

JOSAM COMPANY
MICHIGAN CITY, INDIANA

NOTES

SPECIFICATION:	ROOF DRAIN FLO-SET®	SERIES 28600																																														
<p>JOSAM 28600 SERIES COATED CAST IRON FLO-SET® ROOF DRAIN, LARGE SECURED DOME, ADJUSTABLE CALIBRATED VANDAL-PROOF VANE COLLAR, WEJLOC® NON-PUNCTURING CLAMP RING WITH STATIONARY VANES AND INTEGRAL GRAVEL STOP, LARGE SUMP WITH WIDE ROOF FLANGE AND BOTTOM OUTLET.</p>																																																
																																																
<p>DOME FREE AREA: 153.6 SQ. IN.</p> <p>WEJLOC CLAMP RING WITH STATIONARY VANES</p> <p>1" MIN 4-3/4" MAX</p> <p>DECK CLAMP (-1 OPTION)</p> <p>Ø 13 1/4" MIN. DECK OPENING</p> <p>Ø 15 1/4"</p> <p>Ø 18"</p> <p>-Z OUTLET SHOWN</p>																																																
<p>▼</p> <table border="1" style="width: 100%; border-collapse: collapse;"> <tr><td>-AE</td><td>THREADED LEVELIZE ADJ. EXT.</td></tr> <tr><td>-CR</td><td>CLAMPING DRAIN RECEIVER (MIN. DECK OPENING Ø16")</td></tr> <tr><td>-1</td><td>DECK CLAMP ASSEMBLY</td></tr> <tr><td>-2</td><td>DRAIN RECEIVER</td></tr> <tr><td>-3</td><td>DECK CLAMP ASSEMBLY AND DRAIN RECEIVER</td></tr> <tr><td>-4</td><td>SECONDARY FLASHING CLAMP (-AE ONLY)</td></tr> <tr><td>-10</td><td>FIXED EXTENSION COLLAR, CAST IRON (SPECIFY HEIGHT*)</td></tr> <tr><td>-10-20</td><td>FIXED EXTENSION COLLAR, GALVANIZED (SPECIFY HEIGHT*)</td></tr> <tr><td>-20</td><td>GALVANIZED CAST IRON PARTS</td></tr> <tr><td>-23</td><td>ROUGH BRONZE DOME</td></tr> <tr><td>-33</td><td>STAINLESS STEEL MESH-COVERED DOME</td></tr> <tr><td>-VP</td><td>VANDAL-PROOF DOME</td></tr> <tr><td>-66</td><td>NO-HUB SIDE OUTLET (2" THRU 6" OUTLETS ONLY)</td></tr> <tr><td>-T</td><td>THREADED OUTLET</td></tr> <tr><td>-X</td><td>INSIDE CAULK OUTLET</td></tr> <tr><td>-Y</td><td>HUB OUTLET W/ GASKET (2", 3" & 4" SIZES ONLY)</td></tr> <tr><td>-Z</td><td>NO-HUB SPIGOT OUTLET</td></tr> </table>	-AE	THREADED LEVELIZE ADJ. EXT.	-CR	CLAMPING DRAIN RECEIVER (MIN. DECK OPENING Ø16")	-1	DECK CLAMP ASSEMBLY	-2	DRAIN RECEIVER	-3	DECK CLAMP ASSEMBLY AND DRAIN RECEIVER	-4	SECONDARY FLASHING CLAMP (-AE ONLY)	-10	FIXED EXTENSION COLLAR, CAST IRON (SPECIFY HEIGHT*)	-10-20	FIXED EXTENSION COLLAR, GALVANIZED (SPECIFY HEIGHT*)	-20	GALVANIZED CAST IRON PARTS	-23	ROUGH BRONZE DOME	-33	STAINLESS STEEL MESH-COVERED DOME	-VP	VANDAL-PROOF DOME	-66	NO-HUB SIDE OUTLET (2" THRU 6" OUTLETS ONLY)	-T	THREADED OUTLET	-X	INSIDE CAULK OUTLET	-Y	HUB OUTLET W/ GASKET (2", 3" & 4" SIZES ONLY)	-Z	NO-HUB SPIGOT OUTLET	<p>SPECIFY DESIRED FLOW RATE AND HEAD AND DRAIN CAN BE FURNISHED WITH THE VANES PRE-SET AND VANDAL-PROOFED TO THESE SPECIFICATIONS.</p> <table border="1" style="width: 100%; border-collapse: collapse;"> <tr><th colspan="2">PIPE SIZE</th></tr> <tr><td style="width: 50%;"></td><td style="width: 50%; text-align: center;">2"</td></tr> <tr><td></td><td style="text-align: center;">3"</td></tr> <tr><td></td><td style="text-align: center;">4"</td></tr> <tr><td></td><td style="text-align: center;">5"</td></tr> <tr><td></td><td style="text-align: center;">6"</td></tr> </table> <p>*-10 EXTENSION 4" STANDARD</p>	PIPE SIZE			2"		3"		4"		5"		6"	
-AE	THREADED LEVELIZE ADJ. EXT.																																															
-CR	CLAMPING DRAIN RECEIVER (MIN. DECK OPENING Ø16")																																															
-1	DECK CLAMP ASSEMBLY																																															
-2	DRAIN RECEIVER																																															
-3	DECK CLAMP ASSEMBLY AND DRAIN RECEIVER																																															
-4	SECONDARY FLASHING CLAMP (-AE ONLY)																																															
-10	FIXED EXTENSION COLLAR, CAST IRON (SPECIFY HEIGHT*)																																															
-10-20	FIXED EXTENSION COLLAR, GALVANIZED (SPECIFY HEIGHT*)																																															
-20	GALVANIZED CAST IRON PARTS																																															
-23	ROUGH BRONZE DOME																																															
-33	STAINLESS STEEL MESH-COVERED DOME																																															
-VP	VANDAL-PROOF DOME																																															
-66	NO-HUB SIDE OUTLET (2" THRU 6" OUTLETS ONLY)																																															
-T	THREADED OUTLET																																															
-X	INSIDE CAULK OUTLET																																															
-Y	HUB OUTLET W/ GASKET (2", 3" & 4" SIZES ONLY)																																															
-Z	NO-HUB SPIGOT OUTLET																																															
PIPE SIZE																																																
	2"																																															
	3"																																															
	4"																																															
	5"																																															
	6"																																															
<p>▼ SEPARATE SUBMITTAL FOR THIS OPTION AVAILABLE</p> <p>DATE OF LAST CHANGE: 10/24/14</p>																																																
<p>JOSAM COMPANY MICHIGAN CITY, INDIANA</p>		<p>NOTES</p>																																														

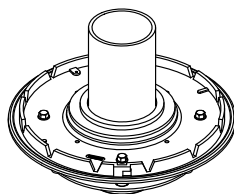
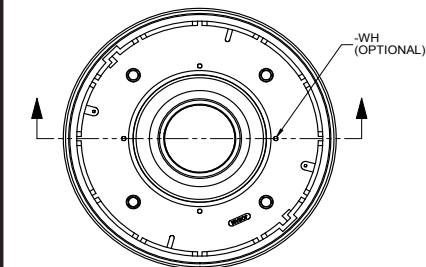
SPECIFICATION:	ROOF DRAIN FLO-SET WITH ADJUSTABLE EXTENSION	SERIES 28600-AE <small>FORMERLY 28500 SERIES</small>																																																	
<p>JOSAM 28600-AE SERIES COATED CAST IRON FLO-SET ROOF DRAIN, LARGE SECURED DOME, ADJUSTABLE CALIBRATED VANDAL-PROOF VANE COLLAR, WEJLOC NON-PUNCTURING CLAMP RING WITH STATIONARY VANES AND INTEGRAL GRAVEL STOP, BOLTED SUPPORT RING, ADJUSTABLE TOP, LARGE SUMP WITH ROOF FLANGE AND BOTTOM OUTLET.</p>																																																			
																																																			
<p>Ø 18</p> <p>Ø 15 1/4</p> <p>DOME FREE AREA 153.6 SQ. IN.</p> <p>APPLY SEALANT HERE AFTER FINAL ADJUSTMENT</p> <p>WEJLOC CLAMP RING AND STATIONARY VANES</p> <p>MIN 1 MAX 4 3/4</p> <p>7 1/2</p> <p>X=5 3/8"</p> <p>**Y=4 7/8"</p> <p>Z=5 1/8"</p> <p>T=3 3/8"</p> <p>*MIN 1-1/2" *MAX 4"</p> <p>ADJUSTABLE COLLAR</p> <p>BOLTED SUPPORT RING & GASKET</p> <p>Ø 13 1/4 MIN DECK OPENING</p> <p>(-1) DECK CLAMP</p> <p>PIPE SIZE</p> <p>SPECIFY DESIRED FLOW RATE AND HEAD AND DRAIN CAN BE FURNISHED WITH THE VANES PRE-SET AND VANDAL-PROOFED TO THESE SPECIFICATIONS.</p>																																																			
<p>▼</p> <table border="1" style="width: 100%; border-collapse: collapse;"> <tr><td>X</td><td>-AE</td><td>THREADED LEVELIZE ADJ. EXT.</td></tr> <tr><td>-CR</td><td>CLAMPING DRAIN RECEIVER (MIN. DECK OPENING Ø16")</td></tr> <tr><td>-1</td><td>DECK CLAMP ASSEMBLY</td></tr> <tr><td>-2</td><td>DRAIN RECEIVER</td></tr> <tr><td>-3</td><td>DECK CLAMP ASSEMBLY AND DRAIN RECEIVER</td></tr> <tr><td>-4</td><td>SECONDARY FLASHING CLAMP (-AE ONLY)</td></tr> <tr><td>-10</td><td>FIXED EXTENSION COLLAR, CAST IRON (SPECIFY HEIGHT**)</td></tr> <tr><td>-10-20</td><td>FIXED EXTENSION COLLAR, GALVANIZED (SPECIFY HEIGHT**)</td></tr> <tr><td>-20</td><td>GALVANIZED CAST IRON PARTS</td></tr> <tr><td>-23</td><td>ROUGH BRONZE DOME</td></tr> <tr><td>-26</td><td>ALUMINUM DOME</td></tr> <tr><td>-33</td><td>STAINLESS STEEL MESH-COVERED DOME</td></tr> <tr><td>-VP</td><td>VANDAL-PROOF DOME</td></tr> <tr><td>-66</td><td>NO-HUB SIDE OUTLET (2" THRU 6" OUTLETS ONLY)</td></tr> <tr><td>-T</td><td>THREADED OUTLET</td></tr> <tr><td>-X</td><td>INSIDE CAULK OUTLET</td></tr> <tr><td>-Y</td><td>HUB OUTLET W/ GASKET (2", 3" & 4" SIZES ONLY)</td></tr> <tr><td>-Z</td><td>NO-HUB SPIGOT OUTLET</td></tr> </table>	X	-AE	THREADED LEVELIZE ADJ. EXT.	-CR	CLAMPING DRAIN RECEIVER (MIN. DECK OPENING Ø16")	-1	DECK CLAMP ASSEMBLY	-2	DRAIN RECEIVER	-3	DECK CLAMP ASSEMBLY AND DRAIN RECEIVER	-4	SECONDARY FLASHING CLAMP (-AE ONLY)	-10	FIXED EXTENSION COLLAR, CAST IRON (SPECIFY HEIGHT**)	-10-20	FIXED EXTENSION COLLAR, GALVANIZED (SPECIFY HEIGHT**)	-20	GALVANIZED CAST IRON PARTS	-23	ROUGH BRONZE DOME	-26	ALUMINUM DOME	-33	STAINLESS STEEL MESH-COVERED DOME	-VP	VANDAL-PROOF DOME	-66	NO-HUB SIDE OUTLET (2" THRU 6" OUTLETS ONLY)	-T	THREADED OUTLET	-X	INSIDE CAULK OUTLET	-Y	HUB OUTLET W/ GASKET (2", 3" & 4" SIZES ONLY)	-Z	NO-HUB SPIGOT OUTLET	<p>SPECIFY DESIRED FLOW RATE AND HEAD AND DRAIN CAN BE FURNISHED WITH THE VANES PRE-SET AND VANDAL-PROOFED TO THESE SPECIFICATIONS.</p> <p>** GASKET ON -Y CONNECTION CONFORMS WITH ASTM-C564</p> <p>* WITH (-4) CLAMP RING MIN 2-1/4" MAX 4-1/4"</p> <table border="1" style="width: 100%; border-collapse: collapse;"> <tr><th colspan="2">PIPE SIZE</th></tr> <tr><td style="width: 50%;"></td><td style="width: 50%; text-align: center;">2"</td></tr> <tr><td></td><td style="text-align: center;">3"</td></tr> <tr><td></td><td style="text-align: center;">4"</td></tr> <tr><td></td><td style="text-align: center;">5"</td></tr> <tr><td></td><td style="text-align: center;">6"</td></tr> </table>	PIPE SIZE			2"		3"		4"		5"		6"	
X	-AE	THREADED LEVELIZE ADJ. EXT.																																																	
-CR	CLAMPING DRAIN RECEIVER (MIN. DECK OPENING Ø16")																																																		
-1	DECK CLAMP ASSEMBLY																																																		
-2	DRAIN RECEIVER																																																		
-3	DECK CLAMP ASSEMBLY AND DRAIN RECEIVER																																																		
-4	SECONDARY FLASHING CLAMP (-AE ONLY)																																																		
-10	FIXED EXTENSION COLLAR, CAST IRON (SPECIFY HEIGHT**)																																																		
-10-20	FIXED EXTENSION COLLAR, GALVANIZED (SPECIFY HEIGHT**)																																																		
-20	GALVANIZED CAST IRON PARTS																																																		
-23	ROUGH BRONZE DOME																																																		
-26	ALUMINUM DOME																																																		
-33	STAINLESS STEEL MESH-COVERED DOME																																																		
-VP	VANDAL-PROOF DOME																																																		
-66	NO-HUB SIDE OUTLET (2" THRU 6" OUTLETS ONLY)																																																		
-T	THREADED OUTLET																																																		
-X	INSIDE CAULK OUTLET																																																		
-Y	HUB OUTLET W/ GASKET (2", 3" & 4" SIZES ONLY)																																																		
-Z	NO-HUB SPIGOT OUTLET																																																		
PIPE SIZE																																																			
	2"																																																		
	3"																																																		
	4"																																																		
	5"																																																		
	6"																																																		
<p>DATE OF LAST CHANGE: 4/24/15</p>																																																			
<p>JOSAM COMPANY MICHIGAN CITY, INDIANA</p>		<p>NOTES</p>																																																	

SPECIFICATION:

JOSAM 29000 SERIES COATED CAST IRON ISOLATION DECK DRAIN, NON-PUNCTURING CLAMP RING FOR STANDPIPE AND BOTTOM OUTLET.

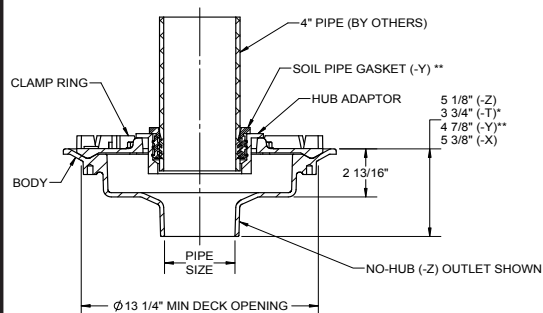
ROOF DRAIN ISOLATION DECK

SERIES **29000**



*THIS DIMENSION IS 5 3/4" ON 8" THREADED OUTLET

** GASKET CONFORMS WITH ASTM-C564



PIPE SIZE
2"
3"
4"
5"
6"
8"

-1	DECK CLAMP ASSEMBLY
-1C	DRAIN RECEIVER CLIPS (MIN. DECK OPENING Ø 16)
-CR	CLAMPING DRAIN RECEIVER (MIN. DECK OPENING Ø 16)
-2	DRAIN RECEIVER
-3	DECK CLAMP ASSEMBLY AND DRAIN RECEIVER
-3C	DRAIN RECEIVER AND DRAIN RECEIVER CLIPS
-17	2" HIGH SOLID CLAMPING COLLAR

-20	GALVANIZED CAST IRON PARTS
-66	NO-HUB SIDE OUTLET (2" THRU 6" OUTLETS ONLY)
-T	THREADED OUTLET
-X	INSIDE CAULK OUTLET
-Y	HUB OUTLET W/ GASKET (2", 3" & 4" SIZES ONLY)
-Z	NO-HUB SPIGOT OUTLET
-WH	WEEP HOLES

DATE OF LAST CHANGE: 04/27/15

DIMENSIONS ARE SUBJECT TO MANUFACTURERS TOLERANCES AND CHANGE WITHOUT NOTICE. WE CAN ASSUME NO RESPONSIBILITY FOR USE OF SUPERSEDED OR VOID DATA.

JOSAM COMPANY
MICHIGAN CITY, INDIANA

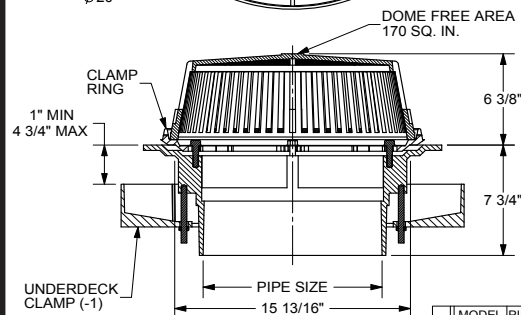
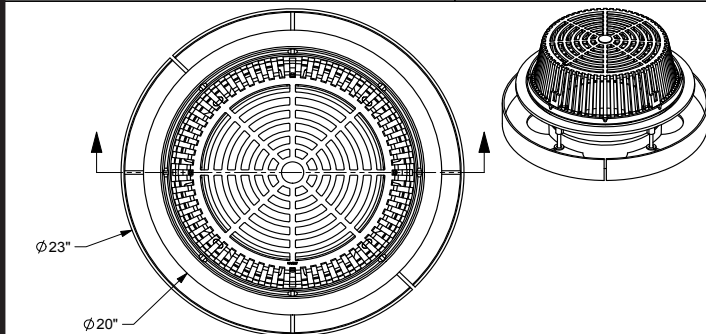
NOTES

SPECIFICATION:

JOSAM 29100 SERIES COATED CAST IRON ROOF DRAIN WITH LARGE CAST IRON DOME, NON-PUNCTURING CLAMP RING WITH INTEGRAL GRAVEL STOP, LARGE SUMP WITH WIDE ROOF FLANGE AND NO-HUB BOTTOM OUTLET.

ROOF DRAIN EXTRA-LARGE SUMP

SERIES **29100**



-1	DECK CLAMP ASSEMBLY
-2	DRAIN RECEIVER
-3	DECK CLAMP ASSEMBLY AND DRAIN RECEIVER
-10	FIXED EXTENSION COLLAR, CAST IRON (SPECIFY HEIGHT**)
-10-20	FIXED EXTENSION COLLAR, GALVANIZED (SPECIFY HEIGHT**)

MODEL	PIPE SIZE
29108	8"
29110	10"
29112	12"

-17	2" HIGH SOLID CLAMPING COLLAR
-20	GALVANIZED CAST IRON PARTS
-VP	VANDAL-PROOF DOME

** -10 EXTENSION 4" STANDARD

DATE OF LAST CHANGE: 4/24/15

DIMENSIONS ARE SUBJECT TO MANUFACTURERS TOLERANCES AND CHANGE WITHOUT NOTICE. WE CAN ASSUME NO RESPONSIBILITY FOR USE OF SUPERSEDED OR VOID DATA.

JOSAM COMPANY
MICHIGAN CITY, INDIANA

NOTES



WARNING: Cancer and Reproductive Harm - www.p65warnings.ca.gov