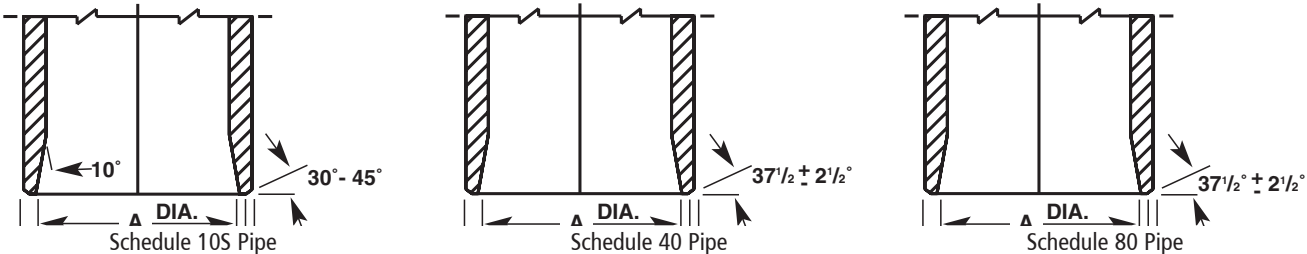


# Cast Stainless Steel Butt-Weld Outlet Connection Data

Josam cast stainless steel drains and cleanouts are regularly furnished with Schedule 40S butt-weld outlet connections. Butt-weld outlet connections can also be furnished in Schedule 10S and 80S as specified.



PIPE SCHEDULE	PIPE SIZE 2"	PIPE SIZE 2"	PIPE SIZE 3"	PIPE SIZE 3"	PIPE SIZE 4"	PIPE SIZE 4"	PIPE SIZE 6"	PIPE SIZE 6"	PIPE SIZE 8"	PIPE SIZE 8"
Dimension	A	B	A	B	A	B	A	B	A	B
10S	2.157	2.375	3.260	3.500	4.260	4.500	6.357	6.625	8.329	8.625
40S	2.067	2.375	3.068	3.500	4.026	4.500	6.065	6.625	7.981	8.625
80S	1.939	2.375	2.900	3.500	3.826	4.500	5.761	6.625	7.625	8.625

 **WARNING:** Cancer and Reproductive Harm - [www.p65warnings.ca.gov](http://www.p65warnings.ca.gov)

**SPECIFICATION:**

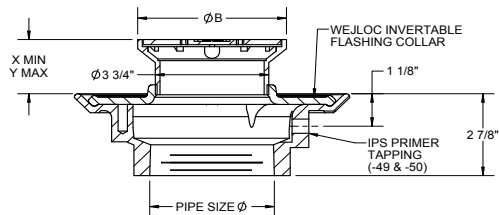
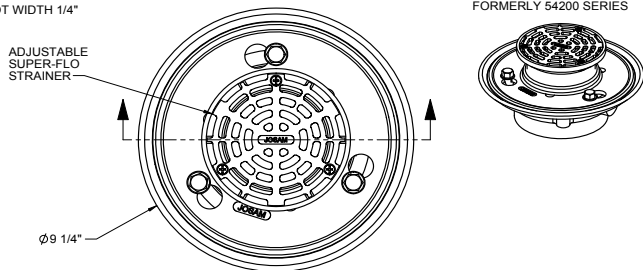
JOSAM 30000-A-SS-T SERIES TYPE 316 CAST STAINLESS STEEL FLOOR DRAIN, TWO-PIECE BODY WITH DOUBLE DRAINAGE FLANGE, WEJLOC® INVERTIBLE FLASHING COLLAR, WEEPHOLES, BOTTOM THREADED OUTLET CONNECTION AND ADJUSTABLE ROUND SUPER-FLO® STRAINER.

**STAINLESS STEEL  
ADJUSTABLE FLOOR DRAIN**

SERIES **30000-A-SS-T**

FORMERLY 54200 SERIES

SLOT WIDTH 1/4"



STAINER	B	X	Y	FREE AREA (SQ. IN.)
-5A-SS	5	3/4"	2-1/8"	7.8
-6A-SS	6	1-1/4"	2-3/8"	11.0
-7A-SS	7	1-1/8"	2-7/8"	13.2
-8A-SS	8	1-5/8"	2-5/8"	16.2

PIPE SIZE
2"
3"
4"

-VP	SECURED GRATE, VANDAL-PROOF SCREWS
-49	3/4" PRIMER TAP
-50	1/2" PRIMER TAP
-80	PERFORATED STAINLESS STEEL BASKET

DATE OF LAST CHANGE: 5/28/14

DIMENSIONS ARE SUBJECT TO MANUFACTURERS TOLERANCES AND CHANGE WITHOUT NOTICE. WE CAN ASSUME NO RESPONSIBILITY FOR USE OF SUPERSEDED OR VOID DATA.

**JOSAM COMPANY**  
MICHIGAN CITY, INDIANA

NOTES

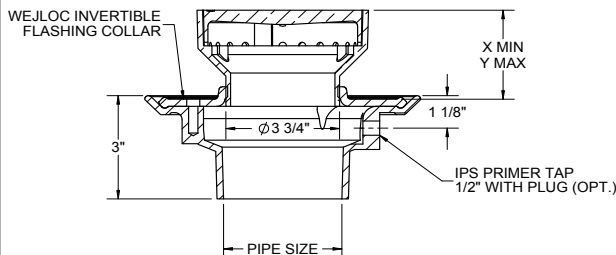
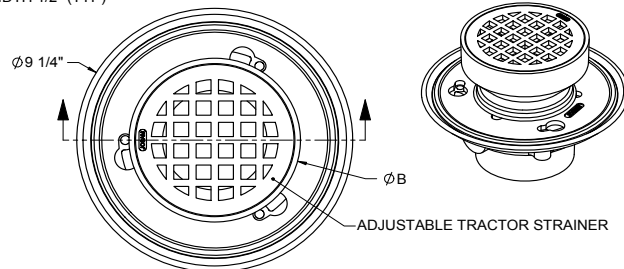
**SPECIFICATION:**

JOSAM SERIES 30000-E-SS STAINLESS STEEL FLOOR DRAIN, TWO-PIECE BODY WITH DOUBLE DRAINAGE FLANGE AND 1/2" PRIMER TAP, WEJLOC® INVERTIBLE FLASHING COLLAR, WEEPHOLES, BOTTOM OUTLET CONNECTION AND STAINLESS STEEL ADJUSTABLE ROUND STRAINER WITH TRACTOR STRAINER.

**FLOOR DRAIN  
ADJUSTABLE FLOOR DRAIN**

SERIES **30000-E-SS**

SLOT WIDTH 1/2" (TYP)



STRAINER	B	X	Y	FREE AREA
-6E	6	2-1/4"	3-1/2"	6.7
-7E	7	1-7/8"	3-1/8"	12.0

2"	PIPE SIZE			
3"	PIPE SIZE			
4"	PIPE SIZE			
		X	-SS	STAINLESS STEEL TOP (6E OR 7E ONLY)
			-80	PERFORATED STAINLESS STEEL BASKET
-21	4" DIAMETER FUNNEL		-J	BACKWATER VALVE
-22	6" DIAMETER FUNNEL		-VP	SECURED GRATE, VANDAL-PROOF SCREWS
			-T	THREADED OUTLET
-50	1/2" PRIMER TAP			

DATE OF LAST CHANGE: 04/27/15

DIMENSIONS ARE SUBJECT TO MANUFACTURERS TOLERANCES AND CHANGE WITHOUT NOTICE. WE CAN ASSUME NO RESPONSIBILITY FOR USE OF SUPERSEDED OR VOID DATA.

**JOSAM COMPANY**  
MICHIGAN CITY, INDIANA

NOTES

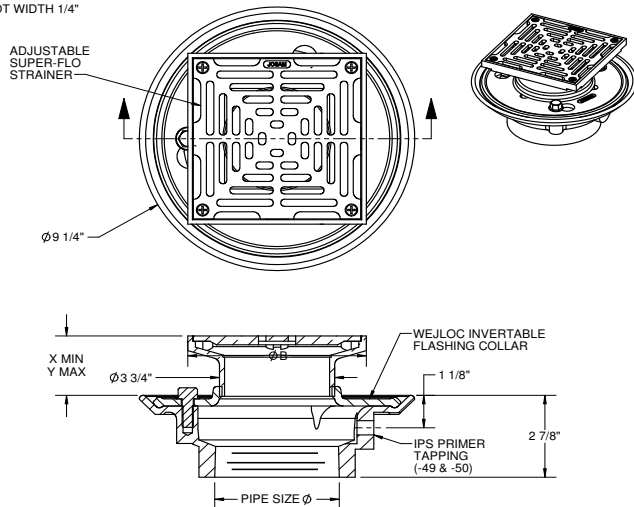
**SPECIFICATION:**

JOSAM 30000-S-SS-T SERIES TYPE 316 CAST STAINLESS STEEL FLOOR DRAIN, TWO-PIECE BODY WITH DOUBLE DRAINAGE FLANGE, WEJLOC® INVERTABLE FLASHING COLLAR, WEEPHOLES, BOTTOM THREADED OUTLET CONNECTION AND ADJUSTABLE SQUARE SUPER-FLO® STRAINER.

# STAINLESS STEEL ADJUSTABLE FLOOR DRAIN

SERIES **30000-S-SS-T**

SLOT WIDTH 1/4"



	STAINER	B	X	Y	FREE AREA (SQ. IN.)
	-5S-SS	5	7/8"	1-7/8"	9.1
	-6S-SS	6	7/8"	2-1/4"	13.8
	-8S-SS	8	1-1/4"	2-1/2"	24.5

	PIPE SIZE
	2"
	3"
	4"

-VP	SECURED GRATE, VANDAL-PROOF SCREWS
-49	3/4" PRIMER TAP
-50	1/2" PRIMER TAP
-80	PERFORATED STAINLESS STEEL BASKET

DATE OF LAST CHANGE: 5/28/14

DIMENSIONS ARE SUBJECT TO MANUFACTURERS TOLERANCES AND CHANGE WITHOUT NOTICE. WE CAN ASSUME NO RESPONSIBILITY FOR USE OF SUPERSEDED OR VOID DATA.

**JOSAM COMPANY**  
MICHIGAN CITY, INDIANA

NOTES

**SPECIFICATION:**

JOSAM 32100-SS SERIES TYPE 316L CAST STAINLESS STEEL FLOOR DRAIN, DOUBLE DRAINAGE FLANGE, WEEPHOLES, ROUND TOP, HEAVY-DUTY LOOSE-SET ANTI-TILTING SUPER-FLO® GRATE WITH PERIMETER DRAINAGE SLOTS, BOTTOM OUTLET, BUTT WELD CONNECTION FOR SCHEDULE 40 PIPE.

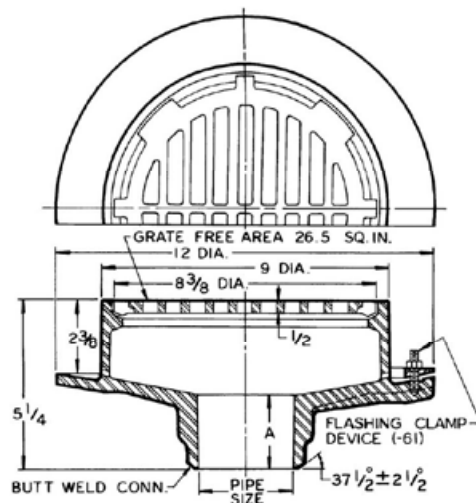
# FLOOR DRAIN 9" ROUND TOP, STAINLESS STEEL

SERIES

**32100-SS**

FORMERLY 54230 SERIES

SLOT WIDTH 15/32"



PIPE SIZE	A
2"	1-7/8"
3"	2-3/8"
4"	2-1/2"

- ▲ -AE LEVELZE® ADJUSTABLE EXTENSION
- ▲ -81 SLOTTED STAINLESS STEEL BUCKET
- 8 SOLID COVER (SPECIFY MATERIAL)
- 9 STAINLESS STEEL MESH ON UNDERSIDE OF GRATE
- 21 4" ROUND FUNNEL (SAME MATERIAL AS GRATE)
- 21-67 4" ROUND FUNNEL (TYPE 316 STAINLESS STEEL)
- 22 6" ROUND FUNNEL (SAME MATERIAL AS GRATE)
- 22-67 6" ROUND FUNNEL (TYPE 316 STAINLESS STEEL)
- 23 9" x 3" OVAL FUNNEL (SAME MATERIAL AS GRATE)
- 23-67 9" x 3" OVAL FUNNEL (TYPE 316 STAINLESS STEEL)
- 25 TYPE 304 STAINLESS STEEL RECESSED CLOSURE PLUG
- 26 MOLDED ABS RECESSED CLOSURE PLUG
- 34 "T" HANDLE FOR RECESSED PLUG
- 61 FLASHING CLAMP DEVICE
- 69 SCHEDULE 10 S BUTT WELD CONNECTION

▼ SEPARATE SUBMITAL FOR THIS OPTION AVAILABLE

DRAWING No. 10/13/14

A-13019-K

**JOSAM COMPANY**  
MICHIGAN CITY, INDIANA

NOTES:



**WARNING:** Cancer and Reproductive Harm - [www.p65warnings.ca.gov](http://www.p65warnings.ca.gov)

**SPECIFICATION:**

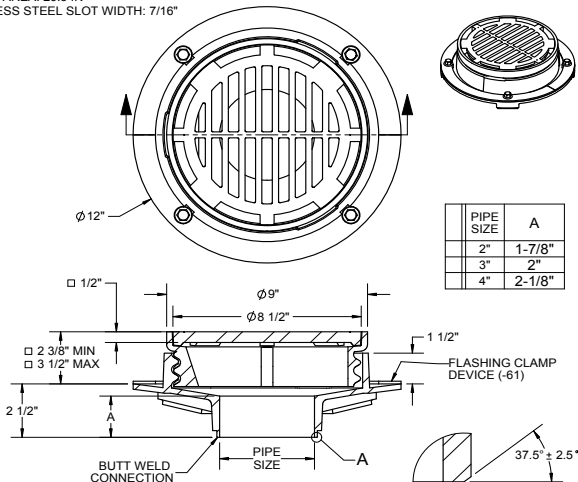
JOSAM 32100-SS-AE SERIES TYPE 316 CAST STAINLESS STEEL LEVELEZE® FLOOR DRAIN, DOUBLE DRAINAGE FLANGE, WEEPHOLES, ROUND TOP, ADJUSTABLE COLLAR WITH ROLLED THREADS AND HEAVY-DUTY LOOSE-SET ANTI-TILTING SUPER-FLO® GRATE WITH PERIMETER DRAINAGE SLOTS, BOTTOM OUTLET, BUTT WELD CONNECTION FOR SCHEDULE 40 PIPE.

**FLOOR DRAIN  
9" ROUND TOP,  
STAINLESS STEEL**

SERIES **32100-SS-AE**

GRATE FREE AREA: 26.5 IN<sup>2</sup>  
STD. STAINLESS STEEL SLOT WIDTH: 7/16"

FORMERLY 54210 SERIES



PIPE SIZE	A
2"	1-7/8"
3"	2"
4"	2-1/8"

DETAIL A

□ ADD 1/4" WHEN FURNISHED WITH  
NIKALOY (-1)

X	-AE	LEVELEZE® ADJUSTABLE EXTENSION	-23	9" x 3" OVAL FUNNEL
	-81	SHALLOW STAINLESS STEEL SEDIMENT BUCKET	-25	STAINLESS STEEL RECESSED CLOSURE PLUG
	-8	SOLID COVER	-26	MOLDED ABS RECESSED CLOSURE PLUG
	-9	STAINLESS STEEL MESH ON UNDERSIDE OF GRATE	-34	"T" HANDLE FOR RECESSED PLUG
	-21	4" ROUND FUNNEL	-61	FLASHING CLAMP DEVICE
	-22	6" ROUND FUNNEL	-69	SCHEDULE 10 S BUTT WELD CONNECTION

ΔSEPARATE SUBMITTAL FOR THIS OPTION AVAILABLE

DATE OF LAST CHANGE: 10/13/14

DIMENSIONS ARE SUBJECT TO MANUFACTURER'S  
TOLERANCES AND CHANGE WITHOUT NOTICE.  
WE CAN ASSUME NO RESPONSIBILITY FOR  
USE OF SUPERSEDED OR VOID DATA.

**JOSAM COMPANY**  
MICHIGAN CITY, INDIANA

NOTES

**SPECIFICATION:**

JOSAM 32100-SS-AE-81 SERIES TYPE 316 CAST STAINLESS STEEL LEVELEZE® FLOOR DRAIN, DOUBLE DRAINAGE FLANGE, WEEPHOLES, ADJUSTABLE COLLAR WITH ROLLED THREADS, ROUND TOP, LOOSE-SET ANTI-TILTING SUPER-FLO® GRATE WITH PERIMETER DRAINAGE SLOTS, SHALLOW SEDIMENT BUCKET, BOTTOM OUTLET, BUTT WELD CONNECTION FOR SCHEDULE 40 PIPE.

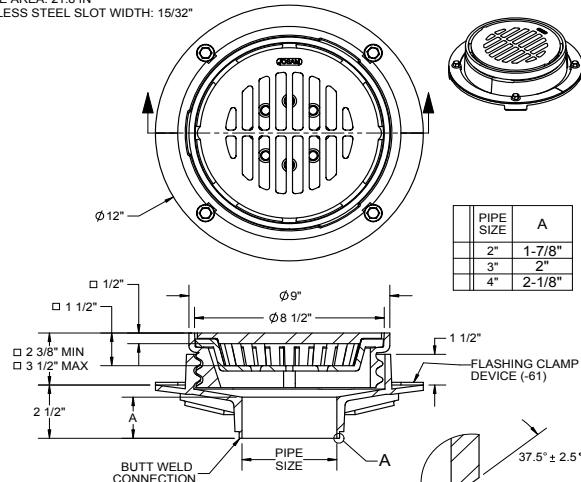
**FLOOR DRAIN**

9" ROUND TOP, STAINLESS STEEL  
W/ ADJ. EXTENSION AND BUCKET

SERIES **32100-SS-AE-81**

GRATE FREE AREA: 21.8 IN<sup>2</sup>  
STD. STAINLESS STEEL SLOT WIDTH: 15/32"

FORMERLY 54220 SERIES



PIPE SIZE	A
2"	1-7/8"
3"	2"
4"	2-1/8"

DETAIL A

□ ADD 1/4" WHEN FURNISHED WITH  
NIKALOY (-1)

X	-AE	LEVELEZE® ADJUSTABLE EXTENSION	-23	9" x 3" OVAL FUNNEL
	-81	SHALLOW STAINLESS STEEL SEDIMENT BUCKET	-25	STAINLESS STEEL RECESSED CLOSURE PLUG
	-8	SOLID COVER	-26	MOLDED ABS RECESSED CLOSURE PLUG
	-9	STAINLESS STEEL MESH ON UNDERSIDE OF GRATE	-34	"T" HANDLE FOR RECESSED PLUG
	-21	4" ROUND FUNNEL	-61	FLASHING CLAMP DEVICE
	-22	6" ROUND FUNNEL	-69	SCHEDULE 10 S BUTT WELD CONNECTION

DATE OF LAST CHANGE: 10/13/14

DIMENSIONS ARE SUBJECT TO MANUFACTURER'S  
TOLERANCES AND CHANGE WITHOUT NOTICE.  
WE CAN ASSUME NO RESPONSIBILITY FOR  
USE OF SUPERSEDED OR VOID DATA.

**JOSAM COMPANY**  
MICHIGAN CITY, INDIANA

NOTES

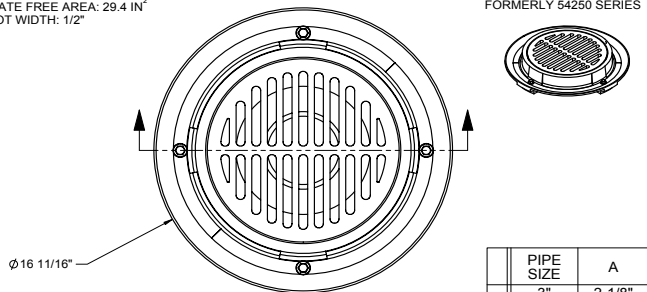
**SPECIFICATION:**

JOSAM 32200-SS SERIES TYPE 316 CAST STAINLESS STEEL FLOOR DRAIN, DOUBLE DRAINAGE FLANGE, WEEPHOLES, ROUND TOP, LOOSE-SET ANTI-TILTING GRATE, BOTTOM OUTLET, BUTT WELD CONNECTION FOR SCHEDULE 40 PIPE. HEAVY DUTY LOAD RATING.

**FLOOR DRAIN**  
**12" ROUND TOP,**  
**STAINLESS STEEL**

 SERIES **32200-SS**

FORMERLY 54250 SERIES

 GRATE FREE AREA: 29.4 IN<sup>2</sup>  
 SLOT WIDTH: 1/2"


PIPE SIZE	A
3"	2-1/8"
4"	2-1/4"
6"	2-5/8"

-8	SOLID COVER
-9	STAINLESS STEEL MESH ON UNDERSIDE OF GRATE
-22	6" ROUND FUNNEL
-25	STAINLESS STEEL RECESSED CLOSURE PLUG

-26	MOLDED ABS RECESSED CLOSURE PLUG
-34	"T" HANDLE FOR RECESSED PLUG
-61	FLASHING CLAMP DEVICE
-69	SCHEDULE 10 S BUTT WELD CONNECTION

DATE OF LAST CHANGE: 11/05/14

 DIMENSIONS ARE SUBJECT TO MANUFACTURERS  
 TOLERANCES AND CHANGE WITHOUT NOTICE.  
 WE CAN ASSUME NO RESPONSIBILITY FOR  
 USE OF SUPERSEDED OR VOID DATA.

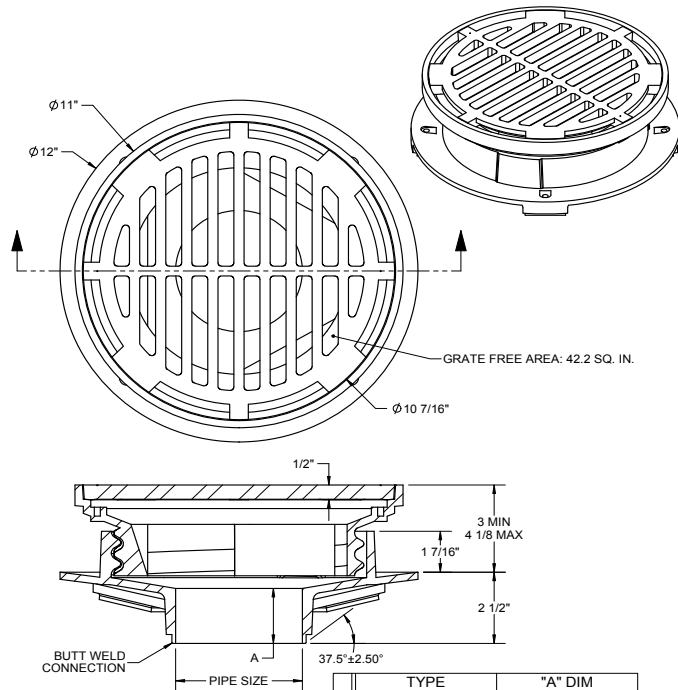
**JOSAM COMPANY**  
 MICHIGAN CITY, INDIANA

NOTES

**SPECIFICATION:**

JOSAM 32200-AE-SS TYPE 304 CAST STAINLESS STEEL LEVELZEZE FLOOR DRAIN WITH DOUBLE DRAINAGE FLANGE, WEEPHOLES, ROUND TOP ADJUSTABLE COLLAR WITH ROLLED THREAD AND LOOSE SET ANTI-TILTING SUPER-FLO GRATE WITH PERIMETER DRAINAGE SLOTS, BOTTOM OUTLET, BUTT WELD CONNECTION FOR SCHEDULE 40 PIPE.

**LEVELZEZE FLOOR DRAIN**  
**STAINLESS STEEL**

 SERIES **32200-AE-SS**


TYPE	"A" DIM
32202-AE-SS	1 7/8
32203-AE-SS	2
32204-AE-SS	2 1/8

DATE OF LAST CHANGE: 04/27/15

 DIMENSIONS ARE SUBJECT TO MANUFACTURERS  
 TOLERANCES AND CHANGE WITHOUT NOTICE.  
 WE CAN ASSUME NO RESPONSIBILITY FOR  
 USE OF SUPERSEDED OR VOID DATA.

**JOSAM COMPANY**  
 MICHIGAN CITY, INDIANA

NOTES

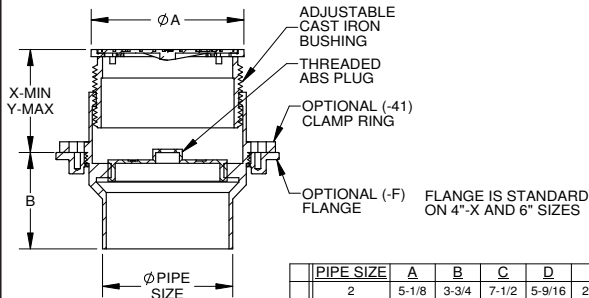
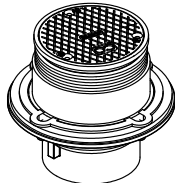
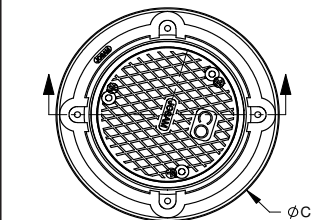

**WARNING:** Cancer and Reproductive Harm - [www.p65warnings.ca.gov](http://www.p65warnings.ca.gov)

**SPECIFICATION:**

JOSAM 55000-SS SERIES COATED CAST IRON KLEENATRON II LEVELEZE FLOOR CLEANOUT, INTERNAL ABS CLEANOUT PLUG, ADJUSTABLE CAST IRON HOUSING WITH MEDIUM-DUTY SCORIATED SECURED ROUND STAINLESS STEEL COVER.

**CLEANOUT  
ROUND STAINLESS TOP**

SERIES **55000-SS**



PIPE SIZE	A	B	C	D	X	Y
2	5-1/8	3-3/4	7-1/2	5-9/16	2-1/8	3-5/8
3	5-1/8	3-3/4	7-1/2	5-9/16	2-1/8	3-5/8
4	5-1/8	3-3/4	7-1/2	5-9/16	2-1/8	3-5/8
4-X	6-5/8	4-1/4	9-3/16	7	2	3-11/16
5-Z	5-1/8	3-3/4	7-1/2	5-9/16	2-1/8	3-5/8
6-Z	6-5/8	4-1/4	9-3/16	7	2	3-11/16

X	-SS	STAINLESS STEEL TOP	-F	FLANGE ONLY
	-14	CARPET CLEANOUT MARKER	-WF	WIDE FLANGE
	-VP	SECURED COVER, VANDAL-PROOF SCREWS	-CFC	CARPET CLEANOUT FLANGE COVER
	-22	TAPER THREAD BRONZE PLUG	-X	INSIDE CAULK OUTLET
	-31	GALVANIZED CAST IRON PARTS	-Y	HUB OUTLET W/ GASKET (2", 3" & 4" SIZES ONLY)
	-41	CLAMP RING AND FLANGE	-Z	NO-HUB OUTLET

DATE OF LAST CHANGE: 6/19/2014  
DIMENSIONS ARE SUBJECT TO MANUFACTURERS TOLERANCES AND CHANGE WITHOUT NOTICE. WE CAN ASSUME NO RESPONSIBILITY FOR USE OF SUPERSEDED OR VOID DATA.

**JOSAM COMPANY**  
MICHIGAN CITY, INDIANA

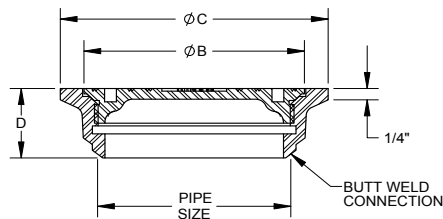
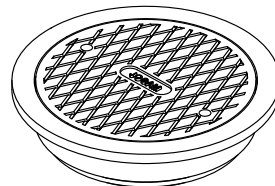
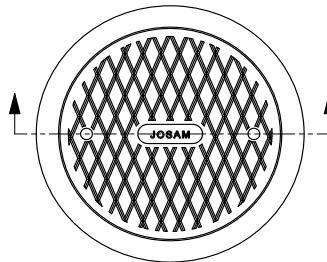
NOTES

**SPECIFICATION:**

JOSAM 56670-SS SERIES TYPE 316 CAST STAINLESS STEEL ROUND FLUSH CLEANOUT WITH FLANGED RING AND SCORIATED SPANNER TYPE FLANGED SCREW PLUG AND BOTTOM OUTLET WITH BUTT WELD CONNECTION FOR SCHEDULE 40 PIPE.

**STAINLESS STEEL  
FLOOR CLEANOUT  
SPANNER TYPE**

SERIES **56670-SS**



PIPE SIZE	B	C	D
2"	2-7/8	3-3/4	1-1/2
3"	4	4-7/8	1-1/2
4"	5	6	1-5/8
6"	7-1/4	8-3/8	1-5/8

OPTIONS:

-45	SPANNER WRENCH
-69	SCHED 10S BUTT WELD CONNECTION

DATE OF LAST CHANGE: 04/27/10  
DIMENSIONS ARE SUBJECT TO MANUFACTURERS TOLERANCES AND CHANGE WITHOUT NOTICE. WE CAN ASSUME NO RESPONSIBILITY FOR USE OF SUPERSEDED OR VOID DATA.

**JOSAM COMPANY**  
MICHIGAN CITY, INDIANA

NOTES