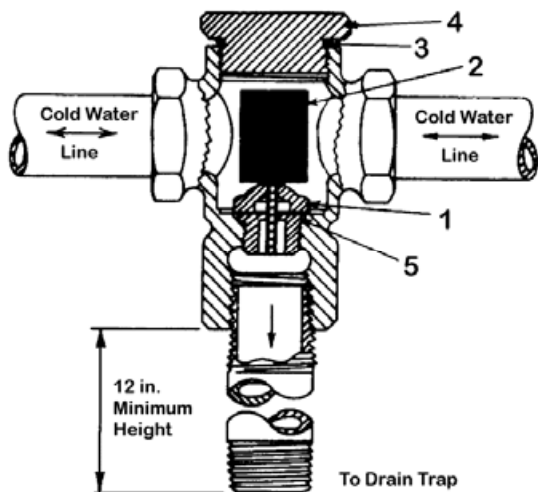


# TRAP SEAL PRIMER VALVE

## INSTRUCTIONS

APPLICATION - INSTALLATION - OPERATION - MAINTENANCE



<u>ITEM NO.</u>	<u>DESCRIPTION</u>
1	Valve Seat
2	Poppet Assembly
3	O-Ring
4	Cap
5	O-Ring

## APPLICATION

This valve, when properly installed in a cold water supply line and connected to a floor drain trap, will ensure a constant seal of fresh water in the drain trap. Frequently, without such a device, the water seal will evaporate from the trap and allow sewer gas and vermin to enter buildings from the sewer lines.

## OPERATING PRINCIPLE

As water is drawn through the supply line by an appliance or water closet, the resulting flow tips the valve mechanism to one side which meters water from the supply line into the primer trap line. Water flow can be observed at the bottom outlet side slots. These side slots act as a vacuum breaker.

## **INSTALLATION REQUIREMENTS**

1. Water lines to which the primer valve will be connected must be clear of dirt.
2. Primer valve must be mounted vertically with sufficient clearance above valve to remove Cap. Connect primer valve to a horizontal cold water supply line near the drain trap.
3. The pipe connecting the primer valve bottom outlet to the drain trap should be at least 1/2 in. inside diameter and must be vertically straight for at least one foot directly below the primer valve.
4. Elbows, tees and reducers must not be connected to the primer valve bottom outlet because they will cause water to flow out through the outlet side slots.
5. The Cap, Valve Seat, Poppet Assembly and O-Rings must be removed prior to any soldering that may be required.
6. Check all connections for leaks and repair as needed. No adjustments are required.

## **MAINTENANCE INSTRUCTIONS**

1. Close supply line valve to shut off water pressure to the primer valve.
2. Remove Cap with a 1-1/4 in. hex wrench. Lift out Poppet Assembly.
3. Unscrew Valve Seat with a 5/8 in. thin wall socket wrench.
4. Insert new Valve Seat and O-Ring in Valve Body and tighten Valve Seat.
5. Place Poppet Assembly on Valve Seat. Small stem must extend into seat orifice.
6. Attach Cap and O-Ring to Valve Body and tighten Cap.

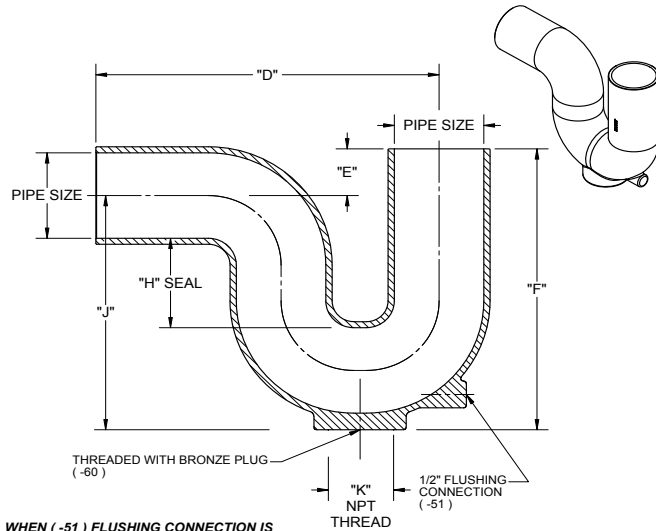
Open water supply line valve. Check for leaks around Cap. Observe flow of water into trap when water is flowing through supply line. No Adjustments are required.

**SPECIFICATION:**

JOSAM SERIES 88100 COATED CAST IRON P-TRAP WITH SPIGOT INLET AND SIDE SPIGOT OUTLET.

**TRAPS & ACCESSORIES****P-TRAP**

SERIES **88100**



**WHEN (-51) FLUSHING CONNECTION IS SELECTED, A VACUUM BREAKER SHOULD ALSO BE INSTALLED SUBJECT TO CODE REQUIREMENTS**

			"D"	"E"	"F"	"H"	"J"	"K"
2"	PIPE SIZE		9-5/16	1-5/16	8-1/8	3-1/4	6-13/16	1-1/2
3"	PIPE SIZE		11-1/2	1-3/4	9-3/4	3	8	2
4"	PIPE SIZE		15-3/8	2	13-1/4	4-1/8	11-1/4	3
-51	1/2" FLUSHING TAP							
-60	BRONZE PLUG							

DATE OF LAST CHANGE: 05/04/15

DIMENSIONS ARE SUBJECT TO MANUFACTURERS TOLERANCES AND CHANGE WITHOUT NOTICE. WE CAN ASSUME NO RESPONSIBILITY FOR USE OF SUPERSEDED OR VOID DATA.

**JOSAM COMPANY**  
MICHIGAN CITY, INDIANA

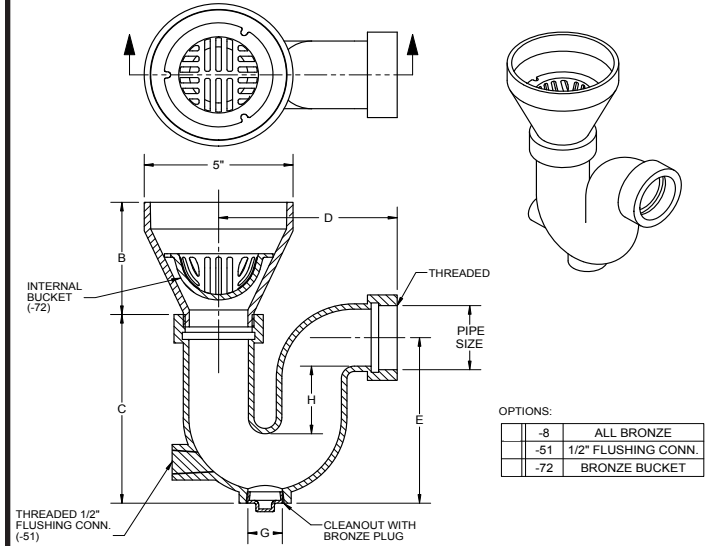
NOTES

**SPECIFICATION:**

JOSAM 88210 SERIES COATED CAST IRON DEEP SEAL "P" TRAP WITH INDIRECT WASTE FUNNEL INLET AND THREADED SIDE OUTLET CONNECTION.

**TRAPS & ACCESSORIES****DEEP SEAL TRAP, FUNNEL INLET**

SERIES **88210**



OPTIONS:

-8	ALL BRONZE
-51	1/2" FLUSHING CONN.
-72	BRONZE BUCKET

THREADED 1/2" FLUSHING CONN. (-51)

CLEANOUT WITH BRONZE PLUG

NOTE: SUBJECT TO CODE REQUIREMENTS, A VACUUM BREAKER MAY NEED TO BE INSTALLED WHEN -51 OPTION IS SPECIFIED

PIPE SIZE	B	C	D	E	G	H
2"	4	6-5/8	6	5-3/4	1	2-3/8
3"	5	8-1/2	8-1/4	8	2	3-1/4

DATE OF LAST CHANGE: 10/27/10

DIMENSIONS ARE SUBJECT TO MANUFACTURERS TOLERANCES AND CHANGE WITHOUT NOTICE. WE CAN ASSUME NO RESPONSIBILITY FOR USE OF SUPERSEDED OR VOID DATA.

**JOSAM COMPANY**  
MICHIGAN CITY, INDIANA

NOTES

**⚠ WARNING: Cancer and Reproductive Harm - [www.p65warnings.ca.gov](http://www.p65warnings.ca.gov)**

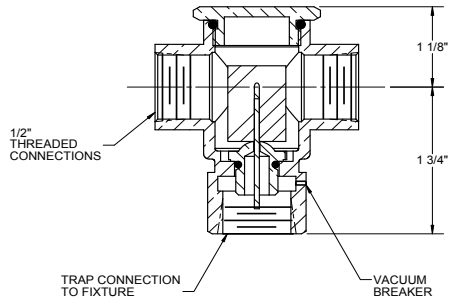
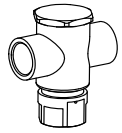
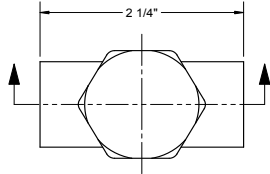
**⚠ WARNING: Cancer and Reproductive Harm - [www.p65warnings.ca.gov](http://www.p65warnings.ca.gov)**

**SPECIFICATION:**

JOSAM 88250 SERIES BRONZE PRIMER VALVE WITH INTEGRAL VACUUM BREAKER AND GASKETED ACCESS COVER FOR INSTALLATION IN A COLD WATER SERVICE LINE TO A SINGLE PLUMBING FIXTURE WITH TRAP CONNECTION FOR MAINTAINING TRAP SEAL.

**TRAPS & ACCESSORIES**  
TRAP SEAL PRIMER VALVE

SERIES **88250**



-10	POLISHED CHROME PLATED
-90	1/2" FEMALE COPPER CONNECTION
-91	1/2" FEMALE UNION CONNECTION

DATE OF LAST CHANGE: 05/15/14

DIMENSIONS ARE SUBJECT TO MANUFACTURERS TOLERANCES AND CHANGE WITHOUT NOTICE. WE CAN ASSUME NO RESPONSIBILITY FOR USE OF SUPERSEDED OR VOID DATA.

**JOSAM COMPANY**  
MICHIGAN CITY, INDIANA

NOTES

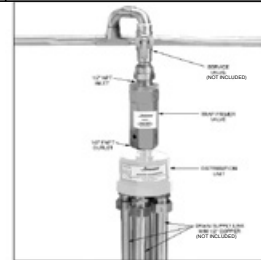
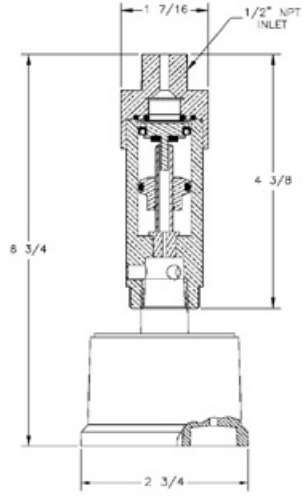
**SPECIFICATION:**

JOSAM SERIES 88300 BRASS TRAP PRIMER VALVE WITH 1/2" NPT INLET, INTEGRAL BACKFLOW PREVENTER, VACUUM BREAKER PORT, AND PLASTIC DISTRIBUTION UNIT FOR TWO TO FOUR PLUMBING FIXTURES.

**TRAP PRIMER VALVE**

SERIES **88300**

ACTIVATES AT 10 PSIG DROP  
OPERATING PRESSURE: 20 - 80 PSIG  
UPC ASSE 1018 APPROVED



TYPICAL INSTALL

BRASS PRIMER VALVE: 88280  
PLASTIC DIST. UNIT: 88290

DATE OF LAST CHANGE: 02/26/14

DIMENSIONS ARE SUBJECT TO MANUFACTURERS TOLERANCES AND CHANGE WITHOUT NOTICE. WE CAN ASSUME NO RESPONSIBILITY FOR USE OF SUPERSEDED OR VOID DATA.

**JOSAM COMPANY**  
MICHIGAN CITY, INDIANA

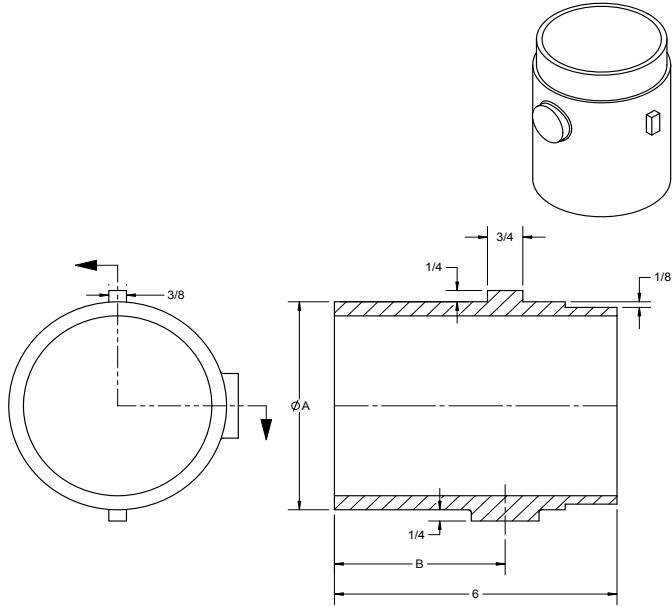
NOTES

**SPECIFICATION:**

JOSAM 88400 SERIES COATED CAST IRON SPIGOT ADAPTER WITH NO-HUB BY NO-HUB CONNECTION.

**SPIGOT ADAPTER  
NO-HUB**

SERIES **88400**



-40	GALVANIZED CAST IRON PARTS
-49	3/4" PRIMER TAP
-50	1/2" PRIMER TAP

PIPE SIZE	A	B
2"	2 5/16	2 1/4
3"	3 1/2	3 1/2
4"	4 5/8	3 3/4
6"	6 1/4	3 7/8
8"	8 1/2	4

DATE OF LAST CHANGE: 4/24/15  
DIMENSIONS ARE SUBJECT TO MANUFACTURERS TOLERANCES AND CHANGE WITHOUT NOTICE. WE CAN ASSUME NO RESPONSIBILITY FOR USE OF SUPERSEDED OR VOID DATA.

**JOSAM COMPANY**  
MICHIGAN CITY, INDIANA

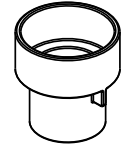
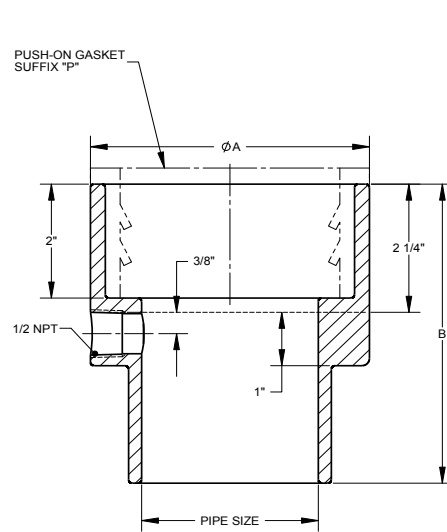
NOTES

**SPECIFICATIONS:**

JOSAM 88450 SERIES COATED CAST IRON TRAP PRIMER ADAPTER WITH NO-HUB BY GASKETED (SUFFIX "P") HUB CONNECTIONS.

**TRAP PRIMER  
ADAPTER**

SERIES **88450**



MODEL NO.	MODEL NO. (INCL. GASKET)	PIPE SIZE	A	B
88452	88452P	2"	3-5/8"	5"
88453	88453P	3"	4-3/4"	5-1/4"
88454	88454P	4"	5-3/4"	5-3/4"

DATE OF LAST CHANGE: 10/10/14  
DIMENSIONS ARE SUBJECT TO MANUFACTURERS TOLERANCES AND CHANGE WITHOUT NOTICE. WE CAN ASSUME NO RESPONSIBILITY FOR USE OF SUPERSEDED OR VOID DATA.

**JOSAM COMPANY**  
MICHIGAN CITY, INDIANA

NOTES

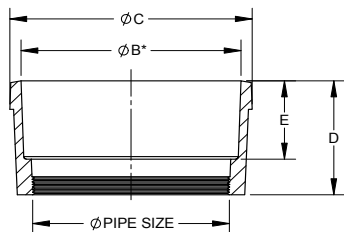
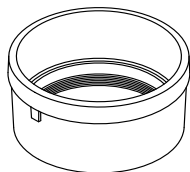
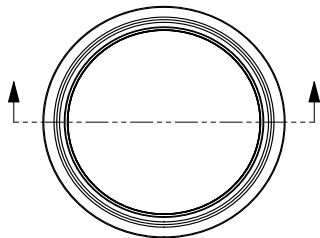
**SPECIFICATION:**

JOSAM 88550 SERIES COATED CAST IRON HUB ADAPTER WITH STANDARD CAST IRON SOIL PIPE HUB AND FEMALE THREADED OUTLET.

**TRAPS & ACCESSORIES**

HUB ADAPTER, THREADED OUTLET

SERIES **88550**



	TYPE NO.	PIPE SIZE	B*	C	D	E	LBS.
	88553	3	4-1/4	5-1/4	3	2-1/4	5
	88554	4	5-3/8	6-1/4	2-7/8	2-3/8	5
	88555	5	6-1/4	7-1/4	3-1/2	2-7/8	7
	88556	6	7-1/2	8-1/4	3-5/8	3	8

\* MEETS ASTM A-74 XH CAST IRON SOIL PIPE STANDARD

[-0.000] GALVANIZED CAST IRON PARTS

DATE OF LAST CHANGE: 11/05/14

DIMENSIONS ARE SUBJECT TO MANUFACTURERS TOLERANCES AND CHANGE WITHOUT NOTICE. WE CAN ASSUME NO RESPONSIBILITY FOR USE OF SUPERSEDED OR VOID DATA.

**JOSAM COMPANY**  
MICHIGAN CITY, INDIANA

NOTES

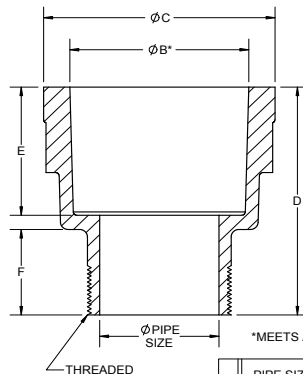
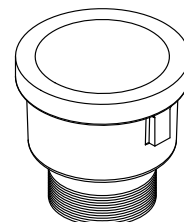
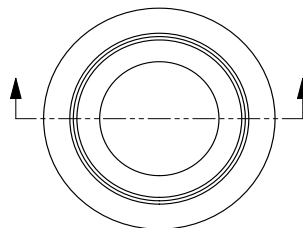
**SPECIFICATION:**

JOSAM 88560 SERIES COATED CAST IRON HUB ADAPTER WITH STANDARD CAST IRON SOIL PIPE HUB AND MALE THREADED OUTLET.

**TRAPS & ACCESSORIES**

HUB ADAPTER, THREADED OUTLET

SERIES **88560**



\* MEETS ASTM A-47 XH CAST IRON SOIL PIPE STANDARD

	PIPE SIZE	B*	C	D	E	F
	2"	3	3-7/8	4	2-1/4	1-1/2
	3"	4-1/4	5-1/8	4-1/4	2-3/8	1-1/2
	4"	5-1/4	6-1/8	4-3/8	2-3/8	1-5/8
	5"	6-1/4	7-1/8	4-3/8	2-3/8	1-3/4
	6"	7-1/4	8	4-3/8	2-3/8	1-5/8
	8"	9-1/4	10-1/2	4-3/8	2-1/4	1-3/4

[-0.000] GALVANIZED CAST IRON PARTS

DATE OF LAST CHANGE: 4/24/15

DIMENSIONS ARE SUBJECT TO MANUFACTURERS TOLERANCES AND CHANGE WITHOUT NOTICE. WE CAN ASSUME NO RESPONSIBILITY FOR USE OF SUPERSEDED OR VOID DATA.

**JOSAM COMPANY**  
MICHIGAN CITY, INDIANA

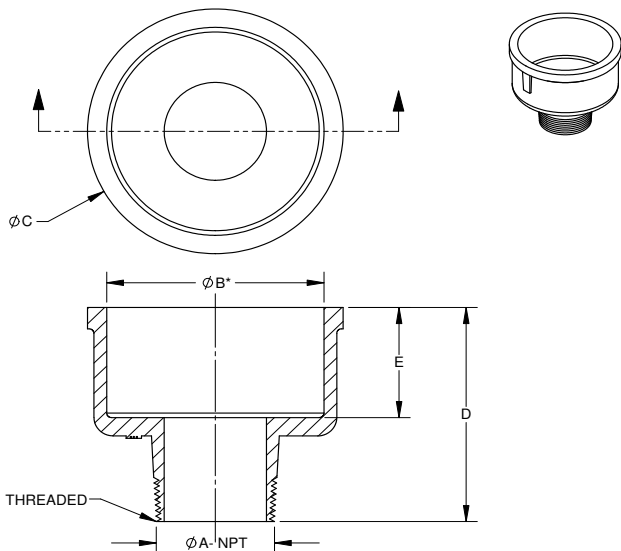
NOTES

**SPECIFICATION:**

JOSAM 88600 SERIES COATED CAST IRON HUB ADAPTER WITH STANDARD CAST IRON SOIL PIPE HUB AND MALE THREADED OUTLET.

**TRAPS & ACCESSORIES****REDUCING HUB ADAPTER**

SERIES **88600**



	TYPE	PIPE SIZE OUTLET	PIPE SIZE INLET	A	B*	C	D	E
	88603-2	2"	3"	2	4-1/4	5	4-3/8	2-1/4
	88603-2 1/2	2-1/2"	3"	2-1/2	4-1/4	4-7/8	3-5/8	2-1/4
	88604-2	2"	4"	2	5-1/4	6	4-3/8	2-1/4
	88604-2 1/2	2-1/2"	4"	2-1/2	5-1/4	6	4-1/4	2-1/4
	88604-3	3"	4"	3	5-1/4	6	4-3/8	2-1/4
	88606-4	4"	6"	4	7-1/4	8	4-3/8	2-1/4

\* MEETS ASTM A-74 XH CAST IRON SOIL PIPE STANDARD

-40 GALVANIZED CAST IRON PARTS

DATE OF LAST CHANGE: 4/7/14

DIMENSIONS ARE SUBJECT TO MANUFACTURERS TOLERANCES AND CHANGE WITHOUT NOTICE. WE CAN ASSUME NO RESPONSIBILITY FOR USE OF SUPERSEDED OR VOID DATA.

**JOSAM COMPANY**  
MICHIGAN CITY, INDIANA

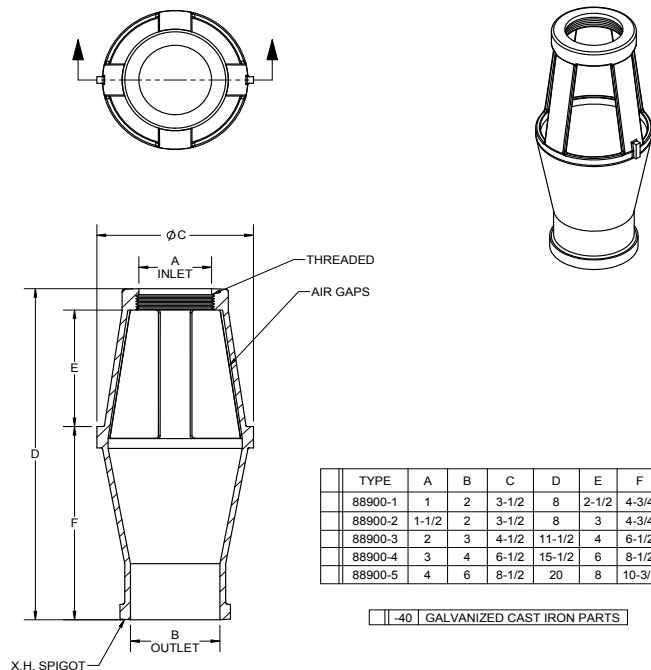
NOTES

**SPECIFICATION:**

JOSAM 88900 SERIES COATED CAST IRON AIR GAP WITH INTEGRALLY CAST AIR PORTS, THREADED INLET AND EXTRA-HEAVY SPIGOT OUTLET.

**TRAPS AND ACCESSORIES****AIR GAP**

SERIES **88900**



	TYPE	A	B	C	D	E	F
	88900-1	1	2	3-1/2	8	2-1/2	4-3/4
	88900-2	1-1/2	2	3-1/2	8	3	4-3/4
	88900-3	2	3	4-1/2	11-1/2	4	6-1/2
	88900-4	3	4	6-1/2	15-1/2	6	8-1/2
	88900-5	4	6	8-1/2	20	8	10-3/8

-40 GALVANIZED CAST IRON PARTS

NOTE: INSTALL AIR GAP IN EXPOSED LOCATION WHERE MINOR SPLASHING WILL NOT BE A PROBLEM

DATE OF LAST CHANGE: 4/24/15

DIMENSIONS ARE SUBJECT TO MANUFACTURERS TOLERANCES AND CHANGE WITHOUT NOTICE. WE CAN ASSUME NO RESPONSIBILITY FOR USE OF SUPERSEDED OR VOID DATA.

**JOSAM COMPANY**  
MICHIGAN CITY, INDIANA

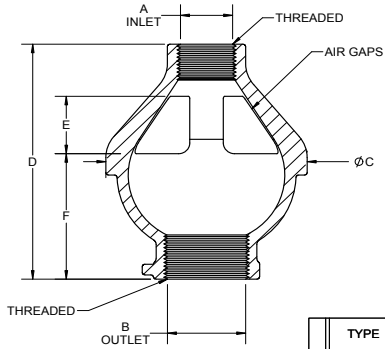
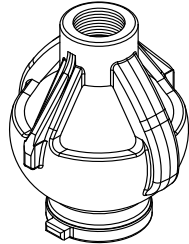
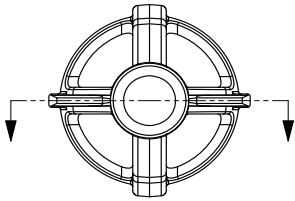
NOTES

**⚠ WARNING: Cancer and Reproductive Harm - www.p65warnings.ca.gov**

**SPECIFICATION:**  
 JOSAM 88910 SERIES COATED CAST IRON AIR GAP WITH INTEGRALLY CAST AIR PORTS, FEMALE THREADED INLET AND OUTLET.

**TRAPS & ACCESSORIES**  
**AIR GAP**

SERIES **88910**



TYPE	A	B	C	D	E	F
88910-1	1/4	3/4	2	3	1	1-5/8
88910-2	1/2	3/4	2	3	1	1-5/8
88910-3	1/2	1	2	3	1	1-5/8
88910-4	3/4	1-1/2	4-1/2	5-1/2	1-5/8	3
88910-5	1	1-1/2	4-1/2	5-1/2	1-5/8	3

-40 GALVANIZED CAST IRON PARTS

NOTE: INSTALL AIR GAP IN EXPOSED LOCATION WHERE MINOR SPLASHING WILL NOT BE A PROBLEM.

DATE OF LAST CHANGE: 4/24/15  
 DIMENSIONS ARE SUBJECT TO MANUFACTURERS TOLERANCES AND CHANGE WITHOUT NOTICE. WE CAN ASSUME NO RESPONSIBILITY FOR USE OF SUPERSEDED OR VOID DATA.

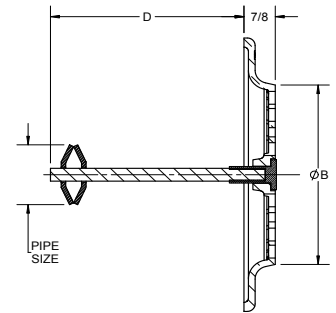
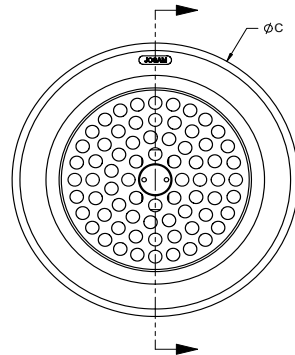
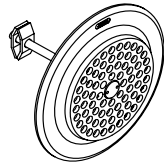
**JOSAM COMPANY**  
 MICHIGAN CITY, INDIANA

NOTES

**SPECIFICATION:**  
 JOSAM 88950 SERIES NIKALOY FRESH AIR INLET WITH SATIN PERFORATED GRILLE, STEEL PIPE EXPANSION ANCHORING DEVICE AND VANDAL-PROOF SPANNER LOCKING DEVICE.

**TRAPS & ACCESSORIES**  
**FRESH AIR INLET**

SERIES **88950**



PIPE SIZE	B	C	D	FREE AREA SQ. IN.
2"	5-1/4	8	5-5/8	8
3"	5-1/4	8	5-5/8	8
4"	5-1/4	8	5-5/8	8
5"	7-1/4	10	6-5/8	16
6"	9-1/4	12	7-5/8	26-3/4
8"	11-1/4	14	8-5/8	40

-2 SATIN FINISH BRONZE FACE

DATE OF LAST CHANGE: 4/24/15  
 DIMENSIONS ARE SUBJECT TO MANUFACTURERS TOLERANCES AND CHANGE WITHOUT NOTICE. WE CAN ASSUME NO RESPONSIBILITY FOR USE OF SUPERSEDED OR VOID DATA.

**JOSAM COMPANY**  
 MICHIGAN CITY, INDIANA

NOTES



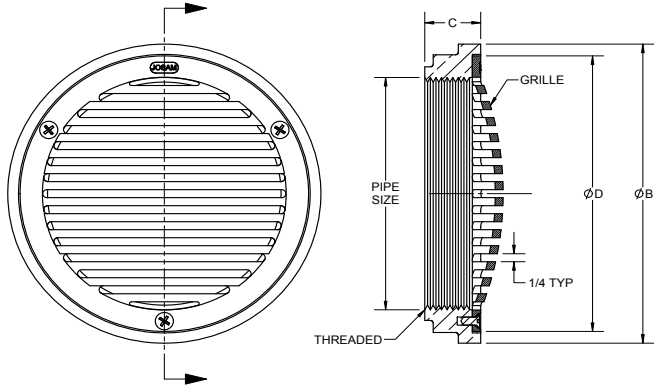
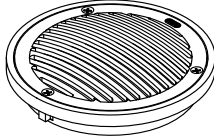
**SPECIFICATION:**

JOSAM 88970 SERIES SATIN FINISH NIKALOY FACE FRESH AIR INLET WITH SATIN SLOTTED CONVEX GRILLE AND FEMALE THREADED OUTLET.

**TRAPS & ACCESSORIES**

FRESH AIR INLET, CONVEX GRILLE

SERIES **88970**



PIPE SIZE	B	C	D	FREE AREA SQ. IN.
4"	6	1 1/8	5 1/2	9
5"	7	1 1/4	6 1/2	14

-8.2	ALL BRONZE WITH SATIN FINISH FACE
-VP	SECURED GRATE, VANDAL-PROOF SCREWS

DATE OF LAST CHANGE: 4/24/15

DIMENSIONS ARE SUBJECT TO MANUFACTURERS TOLERANCES AND CHANGE WITHOUT NOTICE. WE CAN ASSUME NO RESPONSIBILITY FOR USE OF SUPERSEDED OR VOID DATA.

**JOSAM COMPANY**  
MICHIGAN CITY, INDIANA

NOTES

**⚠ WARNING: Cancer and Reproductive Harm - [www.p65warnings.ca.gov](http://www.p65warnings.ca.gov)**