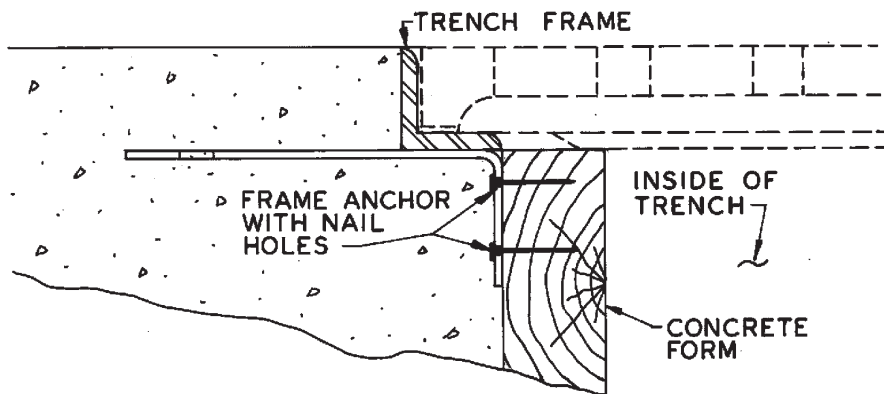


(-11) OPTION, HEAVY-DUTY CONVEX GRATE

allows drainage through openings in top of grate even in the event of perimeter blockages by leaves or debris.



76700 Trench Frame and Grate for poured-in-place trench drains.

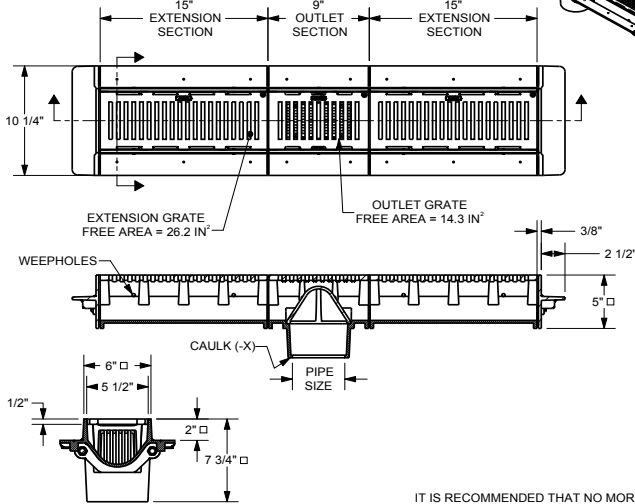
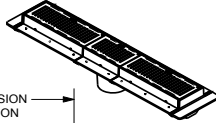
SPECIFICATION:

JOSAM 76000 SERIES COATED CAST IRON RECTANGULAR SECTIONAL TRENCH DRAIN WITH HEAVY-DUTY BODY SECTIONS AND INTEGRAL ANCHOR FLANGE, HEAVY-DUTY LOOSE-SET SUPER-FLO GRATES WITH PERIMETER DRAINAGE SLOTS, SECONDARY LOOSE-SET DOME STRAINER AND BOTTOM INSIDE CAULK OUTLET CONNECTION.

**TRENCH DRAIN
SUPER-FLO 6" WIDE,
RECTANGULAR**

SERIES **76000**

SLOT WIDTH 3-1/2" X 5/16"
(-1 AND -2 SLOT WIDTH 1-11/16 X 1/4")



IT IS RECOMMENDED THAT NO MORE THAN EIGHT (8) EXTENSION SECTIONS BE USED WITH ONE (1) OUTLET SECTION

□ ADD 1/4" FOR NIKALOY OR BRONZE TOP
ALSO ADD 1/4" TO OVERALL LENGTH

FOR INSTALLATIONS EXPOSED TO VEHICULAR TRAFFIC, SPECIFY -VP SECURED GRATE OPTION

	-EXT EXTENSION SECTION
	-1 SATIN FINISH NIKALOY TOP
	-2 SATIN FINISH BRONZE TOP
	-7 DUCTILE IRON GRATE
	-30 FLASHING CLAMP DEVICE
	-40 GALVANIZED CAST IRON PARTS
	-VP SECURED GRATE-VANDAL-PROOF SCREWS

PIPE SIZE
2"
3"
4"

DATE OF LAST CHANGE: 04/27/15
DIMENSIONS ARE SUBJECT TO MANUFACTURERS TOLERANCES AND CHANGE WITHOUT NOTICE. WE CAN ASSUME NO RESPONSIBILITY FOR USE OF SUPERSEDED OR VOID DATA.

JOSAM COMPANY
MICHIGAN CITY, INDIANA

NOTES

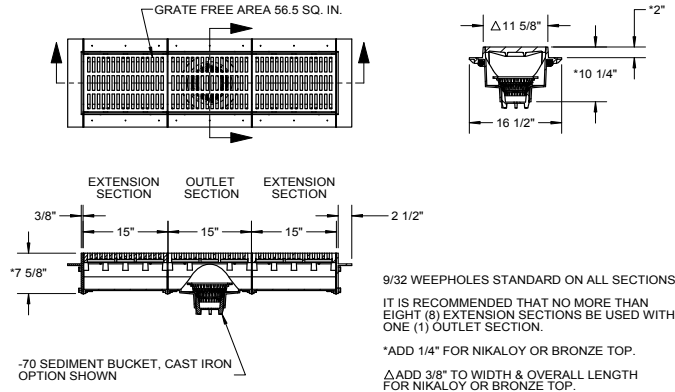
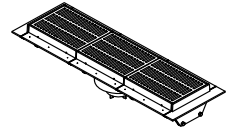
SPECIFICATION:

JOSAM 76010 SERIES COATED CAST IRON RECTANGULAR SECTIONAL TRENCH DRAIN WITH HEAVY-DUTY BODY SECTIONS AND INTEGRAL ANCHOR FLANGE, HEAVY-DUTY LOOSE-SET GRATES AND BOTTOM OUTLET INSIDE-CAULK CONNECTION.

**TRENCH DRAIN
12" WIDE, RECTANGULAR**

SERIES **76010**

SLOT WIDTH 2-3/4" x 7/16" (-1 & -2 SLOT WIDTH 2-3/4" x 7/16")



PIPE SIZE
3"
4"
6"

	-EXT EXTENSION SECTION
	-1 SATIN FINISH NIKALOY TOP
	-2 SATIN FINISH BRONZE TOP
	-7 DUCTILE IRON GRATE
	-11 CONVEX GRATE

	-VP SECURED GRATE, VANDAL-PROOF SCREWS
	-30 FLASHING CLAMP DEVICE
	-40 GALVANIZED CAST IRON PARTS
	-70 SEDIMENT BUCKET, CAST IRON
	-40-70 BUCKET, GALVANIZED
	-ARE ACID RESISTANT EPOXY COATING

DATE OF LAST CHANGE: 04/27/15
DIMENSIONS ARE SUBJECT TO MANUFACTURERS TOLERANCES AND CHANGE WITHOUT NOTICE. WE CAN ASSUME NO RESPONSIBILITY FOR USE OF SUPERSEDED OR VOID DATA.

JOSAM COMPANY
MICHIGAN CITY, INDIANA

NOTES

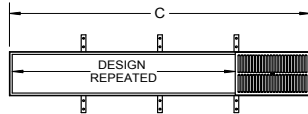
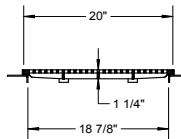
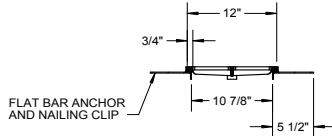
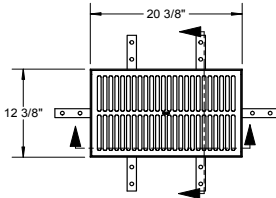
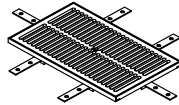
SPECIFICATION:

JOSAM 76300 SERIES COATED CAST IRON 12" x 20" RECTANGULAR LIGHT-DUTY SECTIONAL TRENCH GRATE.

**TRENCH DRAIN
LIGHT-DUTY RECTANGULAR**

SERIES **76300**

SLOT WIDTH 5" x 1/2" (-1 & -8-2 SLOT WIDTH 3-1/4" x 5/16")



'C' = (# OF GRATES x 20") + 3/8"
INSIDE CHANNEL WIDTH = 'C' - 1 1/2"
GRATE FREE AREA (EACH) 110 SQ IN.
GRATE ONLY DIMS = 20" x 12" x 5/8"
FRAME MADE OF 3/4" x 3/4" x 1/8" ANGLE

763__

(INDICATE ## OF GRATES)

<input type="checkbox"/> -1	SATIN FINISH NIKALOY GRATE, STAINLESS STEEL FRAME
<input type="checkbox"/> -7	DUCTILE IRON GRATE
<input type="checkbox"/> -8-2	ALL BRONZE WITH SATIN FINISH TOP
<input type="checkbox"/> -VP	SECURED GRATE, VANDAL-PROOF SCREWS
<input type="checkbox"/> -40	GALVANIZED

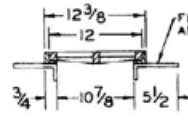
SPECIFICATION:

JOSAM 76400 SERIES COATED CAST IRON 20" x 12" RECTANGULAR LIGHT-DUTY SECTIONAL TRENCH GRATE.

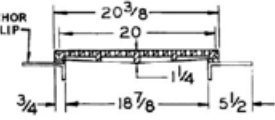
**TRENCH DRAIN
LIGHT-DUTY RECTANGULAR**

SERIES **76400**

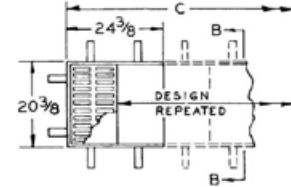
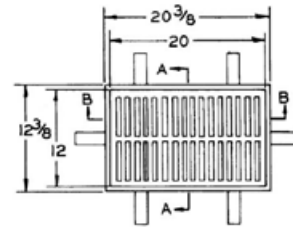
SLOT WIDTH 5" x 1/2" (-1 & -8-2 SLOT WIDTH 3-1/4" x 5/16")



SECTION A-A



SECTION B-B



764__

(INDICATE ## OF GRATES)

'C' = (# OF GRATES x 12") + 3/8"
INSIDE CHANNEL WIDTH = 'C' - 1 1/2"
GRATE FREE AREA (EACH) 110 SQ IN.
GRATE ONLY DIMS = 12" x 20" x 5/8"
FRAME MADE OF 3/4" x 3/4" x 1/8" ANGLE

- 1 SATIN FINISH NIKALOY GRATE, STAINLESS STEEL FRAME
- 7 DUCTILE IRON GRATE
- 8-2 ALL BRONZE WITH SATIN FINISH TOP
- VP SECURED GRATE, VANDAL-PROOF SCREWS
- 40 GALVANIZED

DATE OF LAST CHANGE: 04/27/15

DIMENSIONS ARE SUBJECT TO MANUFACTURERS TOLERANCES AND CHANGE WITHOUT NOTICE. WE CAN ASSUME NO RESPONSIBILITY FOR USE OF SUPERSEDED OR VOID DATA.

JOSAM COMPANY
MICHIGAN CITY, INDIANA

NOTES

DRAWING No. 07/01/08

JOSAM COMPANY
MICHIGAN CITY, INDIANA

NOTES:

A-15574-K

SPECIFICATION:

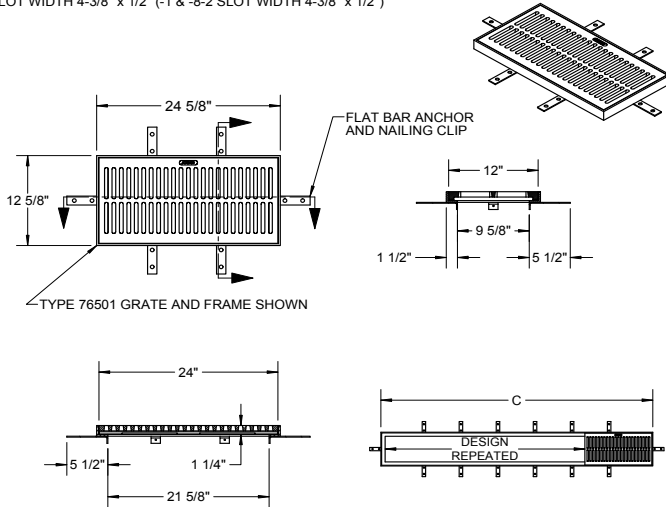
JOSAM 76500 SERIES COATED CAST IRON 12" x 24" RECTANGULAR MEDIUM-DUTY SECTIONAL TRENCH GRATE.

TRENCH DRAIN

MEDIUM-DUTY RECTANGULAR

SERIES **76500**

SLOT WIDTH 4-3/8" x 1/2" (-1 & -8-2 SLOT WIDTH 4-3/8" x 1/2")



765__

(INDICATE ## OF GRATES)

-1	SATIN FINISH NIKALOY GRATE, STAINLESS STEEL FRAME
-7	DUCTILE IRON GRATE
-8-2	ALL BRONZE WITH SATIN FINISH TOP
-VP	SECURED GRATE, VANDAL-PROOF SCREWS
-40	GALVANIZED

'C' = (# OF GRATES x 24") + 5/8"
 INSIDE CHANNEL WIDTH = 'C' - 3"
 GRATE FREE AREA (EACH) 90 SQ. IN.
 GRATE ONLY DIMENSIONS = 24" x 12" x 1-1/4"
 FRAME MADE OF 1-1/2" x 1-1/2" x 1/4" ANGLE

SPECIFICATION:

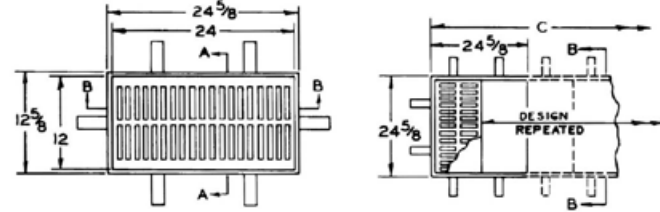
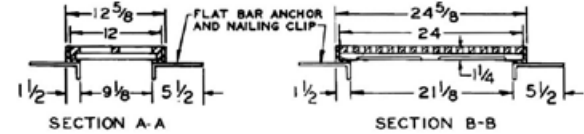
JOSAM 76600 SERIES COATED CAST IRON 24" x 12" RECTANGULAR MEDIUM-DUTY SECTIONAL TRENCH GRATE.

TRENCH DRAIN

MEDIUM-DUTY RECTANGULAR

SERIES **76600**

SLOT WIDTH 4-3/8" x 1/2" (-1 & -8-2 SLOT WIDTH 4-3/8" x 1/2")



□ 766__

(INDICATE ## OF GRATES)

'C' = (# OF GRATES x 12") + 5/8"
 INSIDE CHANNEL WIDTH = 'C' - 3"
 GRATE FREE AREA (EACH) 90 SQ. IN.
 GRATE ONLY DIM'S = 24" x 12" x 5/8"
 FRAME MADE OF 1-1/2" x 1-1/2" x 1/4" ANGLE

□	-1 SATIN FINISH NIKALOY GRATE, STAINLESS STEEL FRAME
□	-7 DUCTILE IRON GRATE
□	-8-2 ALL BRONZE WITH SATIN FINISH TOP
□	-VP SECURED GRATE, VANDAL-PROOF SCREWS
□	-40 GALVANIZED

DRAWING No. 07/01/08

A-15575-K

JOSAM COMPANY

MICHIGAN CITY, INDIANA

NOTES:

DATE OF LAST CHANGE: 04/27/15

DIMENSIONS ARE SUBJECT TO MANUFACTURERS TOLERANCES AND CHANGE WITHOUT NOTICE. WE CAN ASSUME NO RESPONSIBILITY FOR USE OF SUPERSEDED OR VOID DATA.

JOSAM COMPANY

MICHIGAN CITY, INDIANA

NOTES:

⚠ WARNING: Cancer and Reproductive Harm - www.p65warnings.ca.gov

SPECIFICATION: JOSAM 76700 SERIES COATED CAST IRON 12" x 24" RECTANGULAR HEAVY-DUTY SECTIONAL TRENCH GRATE.	TRENCH DRAIN HEAVY-DUTY RECTANGULAR SERIES 76700										
SLOT WIDTH 4-1/4" x 1-1/2" (-1 & -8-2 SLOT WIDTH 4-1/4" x 1-1/2")											
<p style="text-align: center;">-TYPE 76701 GRATE AND FRAME SHOWN</p>											
<p>'C' = (# OF GRATES x 24") + 5/8" INSIDE CHANNEL WIDTH = 'C' - 3" GRATE FREE AREA (EACH) 100 SQ. IN. GRATE ONLY DIMENSIONS = 24" x 12" x 1-1/4" FRAME MADE OF 1-1/2" x 1-1/2" x 1/4" ANGLE</p>											
767__ (INDICATE ## OF GRATES)	<table border="1" style="width: 100%; border-collapse: collapse;"> <tr><td style="width: 20px;">-1</td><td>SATIN FINISH NIKALOY GRATE, STAINLESS STEEL FRAME</td></tr> <tr><td>-7</td><td>DUCTILE IRON GRATE</td></tr> <tr><td>-8-2</td><td>ALL BRONZE WITH SATIN FINISH FINISH TOP</td></tr> <tr><td>-VP</td><td>SECURED GRATE, VANDAL-PROOF SCREWS</td></tr> <tr><td>-40</td><td>GALVANIZED</td></tr> </table>	-1	SATIN FINISH NIKALOY GRATE, STAINLESS STEEL FRAME	-7	DUCTILE IRON GRATE	-8-2	ALL BRONZE WITH SATIN FINISH FINISH TOP	-VP	SECURED GRATE, VANDAL-PROOF SCREWS	-40	GALVANIZED
-1	SATIN FINISH NIKALOY GRATE, STAINLESS STEEL FRAME										
-7	DUCTILE IRON GRATE										
-8-2	ALL BRONZE WITH SATIN FINISH FINISH TOP										
-VP	SECURED GRATE, VANDAL-PROOF SCREWS										
-40	GALVANIZED										
DATE OF LAST CHANGE: 04/27/15 <small>DIMENSIONS ARE SUBJECT TO MANUFACTURERS TOLERANCES AND CHANGE WITHOUT NOTICE. WE CAN ASSUME NO RESPONSIBILITY FOR USE OF SUPERSEDED OR VOID DATA.</small>	JOSAM COMPANY MICHIGAN CITY, INDIANA										

SPECIFICATION: JOSAM 76800 SERIES COATED CAST IRON 24" x 12" RECTANGULAR HEAVY-DUTY SECTIONAL TRENCH GRATE.	TRENCH DRAIN HEAVY-DUTY RECTANGULAR SERIES 76800										
SLOT WIDTH 4-1/4" x 1-1/2" (-1 & -8-2 SLOT WIDTH 4-1/4" x 1-1/2")											
<p>'C' = (# OF GRATES x 12") + 5/8" INSIDE CHANNEL WIDTH = 'C' - 3" GRATE FREE AREA (EACH) 100 SQ. IN. GRATE ONLY DIM'S = 24" x 12" x 5/8" FRAME MADE OF 1-1/2" x 1-1/2" x 1/4" ANGLE</p>											
□ 768__ (INDICATE ## OF GRATES)	<table border="1" style="width: 100%; border-collapse: collapse;"> <tr><td style="width: 20px;">-1</td><td>SATIN FINISH NIKALOY GRATE, STAINLESS STEEL FRAME</td></tr> <tr><td>-7</td><td>DUCTILE IRON GRATE</td></tr> <tr><td>-8-2</td><td>ALL BRONZE WITH SATIN FINISH TOP</td></tr> <tr><td>-VP</td><td>SECURED GRATE, VANDAL-PROOF SCREWS</td></tr> <tr><td>-40</td><td>GALVANIZED</td></tr> </table>	-1	SATIN FINISH NIKALOY GRATE, STAINLESS STEEL FRAME	-7	DUCTILE IRON GRATE	-8-2	ALL BRONZE WITH SATIN FINISH TOP	-VP	SECURED GRATE, VANDAL-PROOF SCREWS	-40	GALVANIZED
-1	SATIN FINISH NIKALOY GRATE, STAINLESS STEEL FRAME										
-7	DUCTILE IRON GRATE										
-8-2	ALL BRONZE WITH SATIN FINISH TOP										
-VP	SECURED GRATE, VANDAL-PROOF SCREWS										
-40	GALVANIZED										
DRAWING No. 07/01/08	JOSAM COMPANY MICHIGAN CITY, INDIANA										