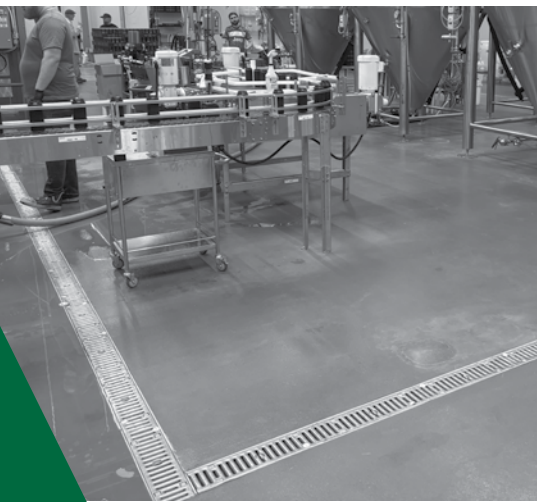


# PRO-PLUS<sup>®</sup>

## Trench Drain System

2025 Price Guide



Effective: June 16, 2025

## TABLE OF CONTENTS

Terms and Conditions.....	1
---------------------------	---

### **PRO-PLUS® 100 SERIES**

Per Foot Pricing.....	2
Accessories/Options.....	3
Replacement Channels, Stainless Frames, & Ductile Iron Rails.....	4
Replacement Grates & Locking Devices.....	5

### **PRO-PLUS® 200 SERIES**

Per Foot Pricing.....	6
Accessories/Options.....	6-7
Replacement Channels & Rails.....	8
Replacement Grates & Locking Devices.....	9

USA Made 100 & 200 Series Replacement Grates & Ductile Iron Rails.....	9
------------------------------------------------------------------------	---



Josam's SMC/GRP channels, accessories, and select grates  
are proudly Made in America.



**A WATTS Brand**

## TERMS AND CONDITIONS

**FREIGHT TERMS:** All shipments will be F.O.B. Michigan City, Indiana or Service Center. A freight allowance will be made on all shipments of \$5,000.00 net amount or more within the continental USA except for Alaska, Hawaii and Puerto Rico. Full freight allowance is limited to normal ground services and does not include charges for specially expedited or guaranteed deliveries requiring air shipment or guaranteed motor freight contracts.

**PAYMENT TERMS:** For accounts with established credit, payment terms are 2% cash discount, payable 30 days from date of invoice, net 31 days. Invoices still unpaid after 31 days from date of invoice will be subject to interest charges of 1-1/2% per month. Minimum invoice: \$50.00 net. Confirmed irrevocable letter of credit or cash in advance of shipment is required for accounts without an established line of credit. Any terms and conditions appearing on your orders which are inconsistent with our quotation and conditions of sale shall be of no effect.

**QUOTATIONS:** Quotations are based on discount in effect at the time of quotation and will be protected on this basis for a period of 30 days from date of quotation.

**ACCEPTANCE OF ORDERS:** All catalogs, price lists or other literature describing our products are not to be construed as offers to sell same. All orders are subject to acceptance by the general office of Seller in Michigan City, Indiana, either by shipment or by written acceptance. Your order, when shipped or accepted by us, shall constitute the complete contract between us, subject to and incorporating therein the terms and conditions herein contained, and any inconsistent provisions contained in your order shall not apply. Prices, discounts and special programs contained in any of our catalogs, price lists or other literature are subject to change without notice.

**CANCELLATION:** Orders are not subject to cancellation without our written consent. If an order is cancelled, the Buyer shall pay all costs incurred in connection with filling the order. Any items not cataloged or items not normally stocked by us and made or purchased to fill the order become the Buyer's property and must be paid for by the Buyer.

**WARRANTY:** Our products are warranted to be free of defects in material and workmanship for a period of one year from date of shipment, but our liability shall be limited solely to those defects, which our inspection finds to be due to our fault. Notification of a claim for defective material or workmanship must be given in writing to Josam. WE SHALL NOT BE RESPONSIBLE FOR ANY LABOR CHARGES OR ANY LOSS, INJURY OR DAMAGES WHATSOEVER, INCLUDING INCIDENTAL OR CONSEQUENTIAL DAMAGES. The sole and exclusive remedy shall be limited to the replacement or repair of the defective goods at the Seller's discretion. Before installation and use, Buyer shall determine the suitability of the product for his intended use and the Buyer assumes all risk and liability whatever in connection therewith. Notification of a claim for material shortage or incorrect material must be given in writing to Josam Company within 15 days of shipment.

**DELAYS:** JOSAM will not assume any liability for delays or defaults occasioned by strikes, fires, or exercised by governmental authorities, failure to obtain material, or by any cause unavoidable beyond its control.

**RETURN POLICY:** Standard catalog material may be returned only upon written authorization of Seller. Requests to return material must be received by Josam Company within 60 days of date of original shipment made by Josam Company. Buyer must return material within 30 days from the date of Seller's written authorization. Credit will be issued to the Buyer's account toward purchase of additional material only. Obsolete, discontinued or specially produced items will not be accepted for return and credit. Where return results from causes involving Buyer's responsibility, credit for saleable goods returned will be issued at invoice price less a 25% restocking charge for handling and inspection. Return of less than \$100.00 net price will not be allowed. For other than saleable goods returned, any necessary charges to render the returned material saleable will be added. Galvanized material will be credited at the same value as painted cast iron. Chrome plated material will be credited at the value of satin finish bronze. We will issue credit for returned parts only originally ordered as a part. On all returns, incoming and outgoing freight charges to and from Michigan City, Indiana, will be deducted from any credit allowed.

**ILLUSTRATIONS, DESCRIPTIONS AND DIMENSIONS:** All illustrations, detail drawings, and accompanying descriptions refer to standard features of each product and do not necessarily show or describe the variations available. All designs are subject to change without notice, and unless specifically stated on order, material will be furnished of design in effect at the time the order is filled. All weights are approximate.

**RISKS:** Our responsibility ceases after product has been delivered to the carrier in good order. It is the responsibility of the consignee to inspect each shipment carefully and file a claim with the carrier for any damage or shortages. Content shortages must be reported within 15 days after receipt of material. Any claim received after this time will be disallowed.

**EXPORT ORDERS:** Factors which govern export orders differ from domestic orders. Please contact Josam Customer Service.

**DELIVERY:** Shipping dates are estimates and time of delivery is not the essence of this sale or the contract therefor. We will ship as near schedule as possible. Under no circumstances will the Seller have any responsibility on account of any delays in manufacture, transportation, or otherwise. Material is subject to shipment in whole or in part, at our option, and each shipment is subject to immediate invoicing.

**TAXES:** Any sales, or manufacturers' tax imposed under existing or future statutes shall be added to the price herewith effective and shall be paid by the Buyer unless proper exemption certificates are filed with Josam.

## PRO-PLUS® 100 SERIES CHANNEL WITH GRATE AND LOCK BAR OR 4-POINT BOLT DOWN

Part Number	Grate Type	Load Class	Lock Type	H2O	ADA/HP	List Price Per Foot*
100C-GSS-A	Galvanized Steel Slotted	A	LB	N	ADA/HP	\$91.00
100C-GSP-A	Galvanized Steel Perforated	A	LB	N	ADA/HP	\$103.00
100C-SSS-A	Stainless Steel Slotted	A	LB	N	ADA/HP	\$164.00
100C-SSP-A	Stainless Steel Perforated	A	LB	N	ADA/HP	\$148.00
100C-VB-A-DC	Vinylester Bar	A	LB	N	ADA/HP	\$217.00
100C-GRP-A	GRP Slotted	A	LB/BD	N	ADA/HP	\$160.00
100C-SSWW-A	Decorative Stainless Steel	A	LB	N	ADA/HP	\$313.00
100C-DIS-C	Ductile Iron Slotted	C	LB/BD	Y	ADA/HP	\$110.00
100C-CIS-C-DC	Cast Iron Solid Cover	C	LB	Y	NA	\$240.00
100C-GSP-C	Galvanized Steel Perforated	C	LB	N	ADA/HP	\$150.00
100C-SSM-C	Stainless Steel Mesh	C	LB	N	NA	\$295.00
100C-SSS-C	Stainless Steel Slotted	C	LB	N	ADA/HP	\$237.00
100C-SSP-C	Stainless Steel Perforated	C	LB	N	ADA/HP	\$187.00
100C-DIL-C-DC	DI Longitudinal Slotted	C	LB	Y	ADA/HP	\$209.00
100C-GSS-C	Galvanized Steel Slotted	C	LB	N	ADA/HP	\$139.00
100C-GRP-C	GRP Slotted	C	LB/BD	N	ADA/HP	\$160.00
100C-SSWW-C	Decorative Stainless Steel	C	LB	N	ADA/HP	\$528.00
100C-SSB-E	Stainless Steel Bar	E	LB	Y	ADA	\$704.00
100C-DIS-E-DC	Ductile Iron Slotted	E	LB	Y	ADA/HP	\$141.00
100C-DIS-F	Ductile Iron Slotted	F**	LB/BD	Y	ADA	\$176.00**
100C-TS	Top Slot SS Frame	NA	NA	NA	ADA	\$277.00
100C-TS-HP	Top Slot SS Frame	NA	NA	NA	ADA/HP	\$293.00

## PRO-PLUS® 100 SERIES CHANNEL WITH PRO-SNAP® GRATE

Part Number	Grate Type	Load Class	Lock Type	H2O	ADA/HP	List Price Per Foot*
100C-GSS-A-PS	Galvanized Steel Slotted	A	PS	N	ADA/HP	\$97.00
100C-SSS-A-PS	Stainless Steel Slotted	A	PS	N	ADA/HP	\$184.00
100C-HDPE-A-PS	HDPE Perforated	A	PS	N	ADA/HP	\$112.00
100C-SSS-C-PS	Stainless Steel Slotted	C	PS	N	ADA/HP	\$261.00
100C-DIS-C-PS	Ductile Iron Slotted	C	PS	Y	ADA/HP	\$119.00
100C-GSS-C-PS	Galvanized Steel Slotted	C	PS	N	ADA/HP	\$162.00
100C-DIS-F-PS	Ductile Iron Slotted	F**	PS	Y	ADA	\$186.00**

\*Pricing provided is per foot for estimation purposes only. Final pricing and footage is to be rounded to the nearest 19.7".

For special domestic content requests, see page 9 or contact your local representative or Josam Company for pricing.

All ductile iron grates come standard with epoxy coating finish.

PRO-SNAP® Grates are not compatible with DI Rails.

Load Classes A-F: A=3,500 lbs/70 PSI | C=56,000 lbs/1,162 PSI | E=135,000 lbs/2,788 PSI | F=200,000 lbs/4,182 PSI

\*\*Price does not include a ductile iron rail. To achieve the "F" load rating add the price of the ductile iron rail.

PRO-PLUS® channels have been successfully tested through Load Class E without a rail. However, it is recommended that for applications using hard wheel forklifts or scissor lifts that a ductile iron rail is used.

# PRO-PLUS® 100 SERIES ACCESSORIES/OPTIONS

A **WATTS** Brand

Part Number	Description	List Price Per Foot
100-SSE	100 Stainless Steel Edge	\$82.00
100-VP	100 Vandal Proof Grate	\$15.00
100-GALV	100 Galvanized Cast Iron Parts	\$30.00
100-RAIL	100 Ductile Iron Rail	\$48.00

Part Number	Description	List Price
100-EC	Solid End Cap	\$32.00
100-EC-HT	High Temp Solid End Cap	\$58.00
100-EC-SS	Solid End Cap w/Stainless Steel Edge	\$58.00
100-EC-SN	Solid End Cap w/Spray Nozzle	\$435.00
100-ECXL20	Solid End Cap for 11-20	\$32.00
100-ECXL20-HT	High Temp Solid End Cap for 11-20	\$58.00
100-ECXL20-SS	Solid End Cap for 11-20 w/Stainless Steel Edge	\$97.00
100-FD	30004 body connection (specify -X, -Y, -Z, or -T) (bottom outlet and PVC adaptor)	\$264.00
100-OES	End Outlet Strainer	\$364.00
100-OE4	End Cap w/4" Outlet	\$32.00
100-OE4-HT	High Temp w/4" End Cap Outlet	\$58.00
100-OE4XL20	End Cap w/4" Outlet for 11-20	\$32.00
100-OE4XL20-HT	High Temp End Cap w/4" Outlet for 11-20	\$58.00
100-OE4XL20-SS	End Cap w/ 4" Outlet w/Stainless Steel Edge for 11-20	\$97.00
100-OB4	4" Bottom Outlet	\$32.00
100-OB4-HT	High Temp 4" Bottom Outlet	\$58.00
100-SIO4	4" Side Outlet	\$58.00
100-CT	Corner & Tee Connector	\$32.00
100-BOS	Bottom Outlet Strainer	\$65.00
100-DBS	Dome Bottom Strainer	\$65.00
100-BS	Channel Bracket Support	\$22.00
100-BSW	Outlet End Bracket Support	\$22.00
100-BSC	Male-Male Bracket Conn Support	\$22.00
100-RI	Rebate Insert	\$11.00
100-RI-HT	High Temp Rebate Insert	\$22.00
100C-SB	100 Silt Box w/19.7" Channel & Sediment Bucket 39.4" total	\$685.00
350151	20" x 24" x 24" Deep Catch Basin	\$1,550.00
350158	Ductile Iron CB Top Frame for Catch Basin	\$657.00
350158-1	CB Top Frame Lock Bar for Catch Basin	\$96.00
350158-2	CB Top Frame Supports for Catch Basin	\$198.00
350154	4" PVC Outlet Connector for CB	\$123.00
350153	6" PVC Outlet Connector for CB	\$137.00
350152	8" PVC Outlet Connector for CB	\$234.00
100-BSCB	Bracket Support for CB Connection	\$49.00
350159	CB Split Filter Basket (2-Required)	\$309.00
350159-SB	CB Split Sediment Bucket	\$309.00
360141	Locking Bar w/Hex Head Bolt	\$11.00
360141-FH	Locking Bar w/Flat Head Screw	\$11.00
360143	Set of 4 bolts for bolt down grates	\$18.00
360180	Class E Ductile Iron Single Grate and Frame for Catch Basin	\$1,250.00

## PRO-PLUS® 100 SERIES REPLACEMENT CHANNELS

Part Number	Description	List Price
100C	100 PRO-PLUS 39.4" NEUTRAL CHANNEL	\$142.00
	100 PRO-PLUS 19.7" NEUTRAL CHANNEL	\$71.00
100C01	#1 PRO-PLUS 39.4" SLOPED CHANNEL	\$198.00
100C02	#2 PRO-PLUS 39.4" SLOPED CHANNEL	\$198.00
100C03	#3 PRO-PLUS 39.4" SLOPED CHANNEL	\$198.00
100C04	#4 PRO-PLUS 39.4" SLOPED CHANNEL	\$198.00
100C05	#5 PRO-PLUS 39.4" SLOPED CHANNEL	\$198.00
100C05N	#5N PRO-PLUS 39.4" NEUTRAL CHANNEL	\$198.00
100C06	#6 PRO-PLUS 39.4" SLOPED CHANNEL	\$198.00
100C07	#7 PRO-PLUS 39.4" SLOPED CHANNEL	\$198.00
100C08	#8 PRO-PLUS 39.4" SLOPED CHANNEL	\$198.00
100C09	#9 PRO-PLUS 39.4" SLOPED CHANNEL	\$198.00
100C10	#10 PRO-PLUS 39.4" SLOPED CHANNEL	\$198.00
100C11	#11 PRO-PLUS 39.4" SLOPED CHANNEL	\$198.00
100C12	#12 PRO-PLUS 39.4" SLOPED CHANNEL	\$198.00
100C13	#13 PRO-PLUS 39.4" SLOPED CHANNEL	\$198.00
100C14	#14 PRO-PLUS 39.4" SLOPED CHANNEL	\$198.00
100C15	#15 PRO-PLUS 39.4" SLOPED CHANNEL	\$198.00
100C15N	#15N PRO-PLUS 39.4" NEUTRAL CHANNEL	\$198.000
100C16	#16 PRO-PLUS 39.4" SLOPED CHANNEL	\$198.00
100C17	#17 PRO-PLUS 39.4" SLOPED CHANNEL	\$198.00
100C18	#18 PRO-PLUS 39.4" SLOPED CHANNEL	\$198.00
100C19	#19 PRO-PLUS 39.4" SLOPED CHANNEL	\$198.00
100C20	#20 PRO-PLUS 39.4" SLOPED CHANNEL	\$198.00
	100 PRO-PLUS 19.7" SLOPED CHANNEL	\$101.00
Part Number	Directional Flow Channels	List Price
100C01-MMR-T	100C PRO-PLUS 39.4" MALE-MALE REVERSE	\$198.00
100C01-MMR-T-SS	100C PRO-PLUS 39.4" MALE-MALE REVERSE, SS	\$333.00
100C01-MMS	100C PRO-PLUS 39.4" MALE-MALE STANDARD	\$198.00
100C01-MMS-SS	100C PRO-PLUS 39.4" MALE-MALE STANDARD, SS	\$333.00
Part Number	Rail / Stainless Steel Frames	List Price
100-TS-FULL	TOP SLOTTED ½" FRAME STAINLESS 39.4"	\$716.00
100-TS-HP-FULL	TOP SLOTTED (Heel Proof) ½" FRAME STAINLESS 39.4"	\$764.00
100-TS-HALF	TOP SLOTTED ½" FRAME STAINLESS 19.7"	\$358.00
100-TS-HP-HALF	TOP SLOTTED (Heel Proof) ½" FRAME STAINLESS 19.7"	\$381.00
100-RAIL	100 DUCTILE IRON RAIL 19.7"	\$78.00

**PRO-PLUS® 100 SERIES REPLACEMENT LOCK BAR OR 4-POINT BOLT DOWN GRATES (19.7")**

Part Number	Grate Type	Load Class	Lock Type	H2O	ADA/HP	List Price
100-GSS-A	Galvanized Steel Slotted	A	LB	N	ADA/HP	\$42.00
100-GSP-A	Galvanized Steel Perforated	A	LB	N	ADA/HP	\$58.00
100-SSS-A	Stainless Steel Slotted	A	LB	N	ADA/HP	\$160.00
100-SSP-A	Stainless Steel Perforated	A	LB	N	ADA/HP	\$130.00
100-VB-A-DC	Vinylester Bar	A	LB	N	ADA/HP	\$247.00
100-GRP-C	GRP Slotted	A-C	LB/BD	N	ADA/HP	\$151.00
100-SSWW-A	Decorative Stainless Steel	A	LB	N	ADA/HP	\$405.00
100-SSM-C	Stainless Steel Mesh	C	LB	N	NA	\$374.00
100-DIS-C	Ductile Iron Slotted	C	LB/BD	Y	ADA/HP	\$70.00
100-CIS-C-DC	Cast Iron Solid Cover	C	LB	Y	NA	\$287.00
100-GSP-C	Galvanized Steel Perforated	C	LB	N	ADA/HP	\$137.00
100-SSS-C	Stainless Steel Slotted	C	LB	N	ADA/HP	\$277.00
100-SSP-C	Stainless Steel Perforated	C	LB	N	ADA/HP	\$198.00
100-DIL-C-DC	DI Longitudinal Slotted	C	LB	Y	ADA/HP	\$232.00
100-GSS-C	Galvanized Steel Slotted	C	LB	N	ADA/HP	\$117.00
100-SSWW-C	Decorative Stainless Steel	C	LB	N	ADA/HP	\$755.00
100-SSB-E	Stainless Steel Bar	E	LB	Y	ADA	\$1,046.00
100-DIS-E-DC	Ductile Iron Slotted	E	LB	Y	ADA/HP	\$122.00
100-DIS-F	Ductile Iron Slotted	F**	LB/BD	Y	ADA	\$180.00**
360141	Slotted Grate Locking Device					\$11.00
360141-FH	Locking Device for all grates other than slotted					\$11.00
360143	Set of 4 bolts for bolt down grates (Requires DI Rail)					\$18.00

**PRO-PLUS® 100 SERIES REPLACEMENT PRO-SNAP® GRATES (19.7")**

Part Number	Grate Type	Load Class	Lock Type	H2O	ADA/HP	List Price
100-GSS-A-PS	Galvanized Steel Slotted	A	PS	N	ADA/HP	\$59.00
100-SSS-A-PS	Stainless Steel Slotted	A	PS	N	ADA/HP	\$203.00
100-HDPE-A-PS	HDPE Perforated	A	PS	N	ADA/HP	\$85.00
100-SSS-C-PS	Stainless Steel Slotted	C	PS	N	ADA/HP	\$330.00
100-DIS-C-PS	Ductile Iron Slotted	C	PS	Y	ADA/HP	\$96.00
100-GSS-C-PS	Galvanized Steel Slotted	C	PS	N	ADA/HP	\$168.00
100-DIS-F-PS	Ductile Iron Slotted	F**	PS	Y	ADA	\$184.00**

All ductile iron grates come standard with epoxy coating finish.

PRO-SNAP® Grates are not compatible with DI Rails.

\*\*Price does not include a ductile iron rail. To achieve the "F" load rating add the price of the ductile iron rail.

PRO-PLUS® channels have been successfully tested through Load Class E without a rail. However, it is recommended that for applications using hard wheel forklifts or scissor lifts that a ductile iron rail is used.

## PRO-PLUS® 200 SERIES CHANNEL WITH GRATE AND LOCK BAR OR 4-POINT BOLT DOWN

Part Number	Grate Type	Load Class	Lock Type	H2O	ADA/HP	List Price Per Foot*
200C-VB-A-DC	Vinylester Bar	A	LB	N	ADA/HP	\$356.00
200C-SSWW-A	Decorative Stainless Steel	A	LB	N	ADA/HP	\$503.00
200C-DIS-C	Ductile Iron Slotted	C	LB/BD	Y	ADA/HP	\$223.00
200C-GRP-C	GRP Slotted	C	LB/BD	Y	ADA/HP	\$258.00
200C-SSM-C	Stainless Steel Mesh	C	LB	Y	NA	\$693.00
200C-SSWW-C	Decorative Stainless Steel	C	LB	N	ADA/HP	\$767.00
200C-SSS-E	Stainless Steel Slotted	E	LB/BD	Y	ADA	\$1,177.00
200C-DIL-E-DC	DI Longitudinal Slotted	E	LB/BD	Y	ADA/HP	\$358.00
200C-DIS-F	Ductile Iron Slotted	E/F**	LB/BD	Y	ADA	\$264.00**

## PRO-PLUS® 200 SERIES CHANNEL WITH PRO-SNAP® GRATE

Part Number	Grate Type	Load Class	Lock Type	H2O	ADA/HP	List Price Per Foot*
200C-DIS-C-PS	Ductile Iron Slotted	C	PS	Y	ADA/HP	\$319.00
200C-DIL-E-PS-DC	DI Longitudinal Slotted	E	PS	Y	ADA/HP	\$412.00
200C-DIS-F-PS	Ductile Iron Slotted	F**	PS	Y	ADA	\$361.00**

## PRO-PLUS® 200 SERIES ACCESSORIES/OPTIONS

Part Number	Description	List Price Per Foot*
200-SSE	200 Stainless Steel Edge	\$82.00
200-VP	200 Vandal Proof Grate	\$15.00
200-GALV	200 Galvanized Cast Iron Parts	\$47.00
200-RAIL	200 Ductile Iron Rail	\$57.00
Part Number	Description	List Price
360142	Locking Bar w/Hex Head Bolt	\$11.00
360142-FH	Locking Bar w/Flat Head Screw	\$11.00
360143	Set of 4 bolts for bolt down grates	\$18.00
200-EC	Solid End Cap	\$65.00
200-EC-HT	High Temp solid end cap	\$128.00
200-EC-SS	Solid end cap w/ SS Edge	\$128.00
200-EC-SN	Solid End Cap w/ Spray Nozzle	\$465.00
200-EXCL20	Solid end cap for channels 11-20	\$65.00
200-EXCL20-HT	High temp solid end cap for channels 11-20	\$128.00
200-EXCL20-SS	Solid end cap w/ ss edge for channels 11-20	\$128.00

\*Pricing provided is per foot for estimation purposes only. Final pricing and footage is to be rounded to the nearest 19.7".

For special domestic content requests, see page 9 or contact your local representative or Josam Company for pricing.

All ductile iron grates come standard with epoxy coating finish.

PRO-SNAP® Grates are not compatible with DI Rails.

Load Classes A-F: A=3,500 lbs/70 PSI | C=56,000 lbs/1,162 PSI | E=135,000 lbs/2,788 PSI | F=200,000 lbs/4,182 PSI

\*\*Price does not include a ductile iron rail. To achieve the "F" load rating add the price of the ductile iron rail.

PRO-PLUS® channels have been successfully tested through Load Class E without a rail. However, it is recommended that for applications using hard wheel forklifts or scissor lifts that a ductile iron rail is used.



## PRO-PLUS® 200 SERIES ACCESSORIES/OPTIONS

Part Number	Description	List Price
200-FD	30004 body connection (specify -X, -Y, -Z, or -T) (includes bottom outlet and PVC adaptor)	\$264.00
200-OES	End Outlet Strainer	\$546.00
200-OE6	End Cap w/ 6" Outlet	\$65.00
200-OE6-HT	High Temp End Cap w/ 6" Outlet	\$128.00
200-OE6XL20	End Cap w/ 6" Outlet for channels 11-20	\$65.00
200-OE6XL20-HT	High Temp End Cap w/ 6" Outlet for channels 11-20	\$128.00
200-OE6XL20-SS	End Cap w/ 6" Outlet & SS Edge	\$128.00
200-OB4	4" Bottom Outlet	\$65.00
200-OB6	6" Bottom Outlet	\$65.00
200-SI06	6" Side Outlet	\$129.00
200-OB6-HT	High Temp 6" Bottom Outlet	\$128.00
200-CT	Corner & Tee Connector	\$65.00
200-BOS	Bottom Outlet Strainer	\$76.00
200-DBS	Dome Bottom Strainer	\$76.00
200-BS	Channel Bracket Support	\$45.00
200-BSW	Outlet End Bracket Support	\$45.00
200-BSC	Male-Male Center Outlet Support	\$45.00
200-RI	Rebate Insert	\$11.00
200-RI-HT	High Temp Rebate Insert	\$22.00
200C-SB	Silt Box w/ 19.7" Channel & Sed Bucket -Total Length 39.4"	\$1,232.00
350151	20" x 24" x 24" Deep Catch Basin	\$1,550.00
350158	DI CB Top Frame	\$657.00
350158-1	CB Top Frame Lock Bar	\$96.00
350158-2	CB Top Frame Supports (4 Req)	\$198.00
350154	4" PVC Outlet Connector	\$123.00
350153	6" PVC Outlet Connector	\$137.00
350152	8" PVC Outlet Connector	\$234.00
200-BSCB	Bracket Support for CB Connection	\$105.00
350159	CB Split Filter Basket (2 Required)	\$309.00
350159-SB	CB Split Sediment Bucket (2 Required)	\$309.00
360180	Class E Ductile Iron Single Grate and Frame for Catch Basin	\$1,250.00

## PRO-PLUS® 200 SERIES REPLACEMENT CHANNELS

Part Number	Description	List Price
200C	200 PRO-PLUS 39.4" NEUTRAL CHANNEL	\$285.00
	200 PRO-PLUS 19.7" NEUTRAL CHANNEL	\$142.00
200C01	#1 PRO-PLUS 39.4" SLOPED CHANNEL	\$333.00
200C02	#2 PRO-PLUS 39.4" SLOPED CHANNEL	\$333.00
200C03	#3 PRO-PLUS 39.4" SLOPED CHANNEL	\$333.00
200C04	#4 PRO-PLUS 39.4" SLOPED CHANNEL	\$333.00
200C05	#5 PRO-PLUS 39.4" SLOPED CHANNEL	\$333.00
200C05N	#5N PRO-PLUS 39.4" NEUTRAL CHANNEL	\$333.00
200C06	#6 PRO-PLUS 39.4" SLOPED CHANNEL	\$333.00
200C07	#7 PRO-PLUS 39.4" SLOPED CHANNEL	\$333.00
200C08	#8 PRO-PLUS 39.4" SLOPED CHANNEL	\$333.00
200C09	#9 PRO-PLUS 39.4" SLOPED CHANNEL	\$333.000
200C10	#10 PRO-PLUS 39.4" SLOPED CHANNEL	\$333.00
200C11	#11 PRO-PLUS 39.4" SLOPED CHANNEL	\$333.00
200C12	#12 PRO-PLUS 39.4" SLOPED CHANNEL	\$333.00
200C13	#13 PRO-PLUS 39.4" SLOPED CHANNEL	\$333.00
200C14	#14 PRO-PLUS 39.4" SLOPED CHANNEL	\$333.00
200C15	#15 PRO-PLUS 39.4" SLOPED CHANNEL	\$333.00
200C15N	#15N PRO-PLUS 39.4" NEUTRAL CHANNEL	\$333.00
200C16	#16 PRO-PLUS 39.4" SLOPED CHANNEL	\$333.00
200C17	#17 PRO-PLUS 39.4" SLOPED CHANNEL	\$333.00
200C18	#18 PRO-PLUS 39.4" SLOPED CHANNEL	\$333.00
200C19	#19 PRO-PLUS 39.4" SLOPED CHANNEL	\$333.00
200C20	#20 PRO-PLUS 39.4" SLOPED CHANNEL	\$333.00
	200 PRO-PLUS 19.7" SLOPED CHANNEL	\$168.00
Part Number	Directional Flow Channels	List Price
200C01-MMR-T	200C PRO-PLUS 39.4" MALE-MALE REVERSE	\$333.00
200C01-MMR-T-SS	200C PRO-PLUS 39.4" MALE-MALE REVERSE, SS	471.00
200C01-MMS	200C PRO-PLUS 39.4" MALE-MALE STANDARD	\$333.00
200C01-MMS-SS	200C PRO-PLUS 39.4" MALE-MALE STANDARD, SS	\$471.00
Part Number	Rail	List Price
200-RAIL	200 DUCTILE IRON RAIL 19.7"	\$96.00

**PRO-PLUS® 200 SERIES REPLACEMENT LOCK BAR OR 4-POINT BOLT DOWN GRATES (19.7")**

Part Number	Grate Type	Load Class	Lock Type	H20	ADA/HP	List Price
200-VB-A-DC	Vinylester Bar	A	LB	N	ADA/HP	\$397.00
200-SSWW-A	Decorative Stainless Steel	A	LB	N	ADA/HP	\$636.00
200-DIS-C	Ductile Iron Slotted	C	LB/BD	Y	ADA/HP	\$184.00
200-GRP-C	GRP Slotted	C	LB/BD	Y	ADA/HP	\$238.00
200-SSM-C	Stainless Steel Mesh	C	LB	Y	NA	\$953.00
200-SSWW-C	Decorative Stainless Steel	C	LB	N	ADA/HP	\$1,072.00
200-SSS-E	Stainless Steel Slotted	E	LB/BD	Y	ADA	\$1,747.00
200-DIL-E-DC	DI Longitudinal Slotted	E	LB/BD	Y	ADA/HP	\$402.00
200-DIS-F	Ductile Iron Slotted	E/F**	LB/BD	Y	ADA	\$247.00**
360142	Locking Device for Slotted Grates					\$11.00
360142-FH	Locking Device for grates other than slotted					\$11.00
360143	Set of 4 bolts for bolt down grates (Requires DI Rail)					\$18.00

**PRO-PLUS® 200 SERIES REPLACEMENT PRO-SNAP® GRATES (19.7")**

Part Number	Grate Type	Load Class	Lock Type	H20	ADA/HP	List Price
200-DIS-C-PS	Ductile Iron Slotted	C	PS	Y	ADA/HP	\$229.00
200-DIL-E-PS-DC	DI Longitudinal Slotted	E	PS	Y	ADA/HP	\$508.00
200-DIS-F-PS	Ductile Iron Slotted	F**	PS	Y	ADA	\$427.00**

**USA MADE 100 & 200 SERIES REPLACEMENT CHANNEL GRATES AND RAIL (19.7")\***

Part Number	Grate Type	Load Class	Lock Type	H20	ADA/HP	List Price
100-VB-A-DC	Vinylester Bar	A	LB	N	ADA/HP	\$247.00
100-CIS-C-DC	Cast Iron Solid Cover	C	LB	Y	ADA/HP	\$287.00
100-DIS-C-DC	Ductile Iron Slotted	C	LB/BD	Y	ADA/HP	\$127.00
100-DIL-C-DC	DI Longitudinal Slotted	C	LB	Y	ADA/HP	\$232.00
100-DIS-C-PS-DC	Ductile Iron Slotted	C	PS	Y	ADA/HP	\$143.00
100-DIS-E-DC	Ductile Iron Slotted	E	LB	Y	ADA/HP	\$122.00
100-DIS-F-DC	Ductile Iron Slotted	F**	LB/BD	Y	ADA	\$232.00**
100-DIS-F-PS-DC	Ductile Iron Slotted	F**	PS	Y	ADA	\$270.00**
100-RAIL-DC	100 Ductile Iron Rail	N/A	N/A	N/A	ADA/HP	\$142.00
200-VB-A-DC	Vinylester Bar	A	LB	N	ADA/HP	\$397.00
200-DIS-C-DC	Ductile Iron Slotted	C	LB/BD	Y	ADA/HP	\$256.00
200-DIS-C-PS-DC	Ductile Iron Slotted	C	PS	Y	ADA/HP	\$477.00
200-DIL-E-DC	DI Longitudinal Slotted	E	LB/BD	Y	ADA/HP	\$402.00
200-DIL-E-PS-DC	DI Longitudinal Slotted	E	PS	Y	ADA/HP	\$508.00
200-DIS-F-DC	Ductile Iron Slotted	F**	LB/BD	Y	ADA	\$342.00**
200-DIS-F-PS-DC	Ductile Iron Slotted	F**	PS	Y	ADA	\$550.00**
200-RAIL-DC	200 Ductile Iron Rail	N/A	N/A	N/A	ADA/HP	\$172.00

All ductile iron grates come standard with epoxy coating finish.

\* All 100 & 200 channels/accessories are USA MADE. For special domestic content requirements, contact your Josam Representative or Josam directly. PRO-SNAP® Grates are not compatible with DI Rails.

\*\*Price does not include a ductile iron rail. To achieve the "F" load rating add the price of the ductile iron rail.

PRO-PLUS® channels have been successfully tested through Load Class E without a rail. However, it is recommended that for applications using hard wheel forklifts or scissor lifts that a ductile iron rail is used.



A **WATTS** Brand

T: (800) 365-6726 • [Josam.com](http://Josam.com)