



Stainless Steel Drainage Products



2024
LIST PRICE SHEET

Effective: January 1, 2024

JOSAM STAINLESS STEEL PUSH-FIT DRAINAGE SYSTEM



As a complement to Josam Company's full line of stainless steel drains, Josam Company also provides a complete Stainless Steel Push-Fit Drainage System. Josam Company offers a complete range of 316L austenitic stainless steel pipes, fittings and accessories. All pipes and fittings are manufactured using the labor saving "Push-Fit" design. Transition from Josam drains to the Josam Push-Fit Drainage System is accomplished with an optional Push-Fit Outlet (PFO) on the drains or by using a transition coupling.

For more details on Josam Company's Stainless Steel Push-Fit Drainage System please refer to the product catalog, contact your local Josam representative or visit our website at www.Josam.com.



TABLE OF CONTENTS

Stainless Steel Non-Adjustable Square Top Drains	Page 1
Stainless Steel Non-Adjustable Round Top Drains	Page 2
Stainless Steel Adjustable Top Drains	Page 3
Replacement Grates	Page 4-5
Stainless Steel Retrofit Liners	Page 5-7
Stainless Steel Cleanouts	Page 8
Stainless Steel Trench Drains	Page 8-10
Stainless Steel Slot Trench Drains	Page 11-12
Stainless Steel Mini Channels	Page 11-12
Stainless Steel Shower Channels	Page 12
Cast Stainless Steel Drains	Page 12-13
Stainless Steel Floor Drains w/Surface Clamp	Page 14

NUMERICAL INDEX

3000X-A-SS	12	4335X	3	4662X	9
3000X-S-SS	13	4357X	3	4663X	9
3210X-SS	13	4367X	3	4664X	9
3210X-AE-SS	13	4389X	3	4681X	10
3220X-SS	13	4457X	3	4682X	10
3220X-AE-SS	13	4543X	5	4683X	10
4130X	8	4563X	5	4684X	10
4133X	1	4564X	5	4711X	11
4140X	8	4565X	5	4712X	11
4143X	1	4583X	5	4713X	11
4144X	1	4586X	5	4714X	11
4150X	8	46212	12	4721X	11
4153X	1	46222	12	4722X	11
4155X	1	46232	12	4723X	11
4163X	1	46242	12	4724X	11
4165X	1	46252	12	4731X	11
4187X	1	46262	12	4732X	11
4230X	8	4631X	8	4733X	11
4243X	2	4632X	8	4734X	11
4240X	8	4633X	8	5667X-SS	13
4244X	2	4634X	8		
4250X	8	4641X	9		
4253X	2	4642X	9		
4255X	2	4643X	9		
4263X	2	4644X	9		
4265X	2	4661X	9		

TERMS AND CONDITIONS

PAYMENT TERMS:

For accounts with established credit, payment terms are 2% cash discount, payable 30 days from date of invoice, net 31 days. Invoices still unpaid after 31 days from date of invoice will be subject to interest charges of 1-1/2% per month. Confirmed irrevocable letter of credit or cash in advance of shipment is required for accounts without an established line of credit. Any terms and conditions appearing on your orders which are inconsistent with our quotation and conditions of sale shall be of no effect.

MINIMUM INVOICE:

\$50.00 net

FREIGHT ALLOWANCE:

All ground shipments will be F.O.B Philadelphia, PA. or shipping location. A freight allowance will be made on all shipments of \$5,000.00 net amount or more within the continental USA except for Alaska, Hawaii and Puerto Rico. Full freight allowance is limited to normal ground services and does not include charges for specially expedited or guaranteed deliveries requiring air shipment or guaranteed motor freight contracts.

RETURN POLICY:

Standard catalog material may be returned only upon written authorization of Seller. Credit will be issued to the Buyer's account toward purchase of additional material only. Material not in original condition, obsolete, discontinued or specially produced items such as trench drains will not be accepted for return or credit.

When return results from causes involving Buyer's responsibility, credit for goods in original condition will be issued at invoice price less 25% restocking charge for handling and inspection. Returns of less than \$100.00 net price will not be allowed. On all returns, incoming and outgoing freight charges to and from Josam Company will be deducted from any credit allowed. If material is returned and not in original condition and credit is denied, freight back to the buyer will be the responsibility of the buyer.

LIMITED WARRANTY:

Our products are warranted to be free of defects in material and workmanship for a period of one year from date of shipment, but our liability shall be limited solely to those defects, which our inspection finds to be due to our fault. Notification of a claim for defective material or workmanship must be given in writing to Josam Company. **WE SHALL NOT BE RESPONSIBLE FOR ANY LABOR CHARGES OR ANY LOSS, INJURY OR DAMAGES WHATSOEVER, INCLUDING INCIDENTAL OR CONSEQUENTIAL DAMAGES.** The sole and exclusive remedy shall be limited to the replacement or repair of the defective goods at the Seller's discretion. Before installation and use, Buyer shall determine the suitability of the product for his intended use and the Buyer assumes all risk and liability whatever in connection therewith.

Notification of a claim for material shortage or incorrect material must be given in writing to Josam Company within 15 days of shipment.

QUOTATIONS:

Quotations are based on discount in effect at the time of quotation and will be protected on this basis for a period of 30-days from date of quotation. If an order is received within this 30 day period, it must indicate a release of material for shipment within 60 days from date of order, and all released shipments will be protected at prices quoted. If order is not released by customer within this 60 day period, it will be priced at discount prevailing at time of shipment.

ACCEPTANCE OF ORDERS:

All catalogs, price lists or other literature describing our products are not to be construed as offers to sell same. All orders are subject to acceptance by the general office of the Seller either by shipment or by written acceptance. Your order, when shipped or accepted by us, shall constitute the complete contract between us, subject to and incorporating therein the terms and conditions herein contained, and any inconsistent provisions contained in your order shall not apply. Prices, discounts and special programs contained in any of our catalogs, price lists or other literature are subject to change without notice.

CANCELLATION:

Orders are not subject to cancellation without our written consent. If an order is cancelled, the Buyer shall pay all costs incurred in connection with filling the order. Any items not cataloged, specially made or not normally stocked by us and made or purchased to fill the order become the Buyer's property and must be paid for by the Buyer.

ILLUSTRATIONS, DESCRIPTIONS AND DIMENSIONS:

All illustrations, descriptions and detailed dimensions represent standard features and do not necessarily indicate all variations available. All weights stated in our catalogs, literature and drawings are approximate and are not guaranteed. All designs, descriptions and dimensions are subject to change without notice, and unless Buyer specifically states otherwise on order, standard products in effect at time order is shipped will be supplied.

RISKS:

Our responsibility ceases after the product has been delivered to the carrier in good order. It is the responsibility of the consignee to inspect each shipment carefully and file a claim with the carrier for any damage or shortage. Content shortages must be reported within 15 days after receipt of material.

DELIVERY:

Shipping dates are estimates and time of delivery is not the essence of this sale or the contract thereof. We will ship as near schedule as possible. Under no circumstances will the Seller have any responsibility on account of any delays in manufacture, transportation, or otherwise. Material is subject to shipment in whole or in part, at our option, and each shipment is subject to immediate invoicing.

TAXES:

Any sales or manufacturer's tax imposed under existing or future statutes shall be added to the price herewith and shall be paid by the Buyer unless proper exemption certificates are filed with Josam Company.

STAINLESS STEEL NON-ADJUSTABLE, SQUARE TOP, NO-HUB OUTLET

SERIES NUMBER	NOM. PIPE SIZE	TOP SIZE	GRATE TYPE	BODY DEPTH	LIST PRICE
41332	2"	6"	Reinforced Perforated	6"	\$348.00
41333	3"	6"	Reinforced Perforated	6"	\$348.00
41432	2"	8"	Reinforced Perforated	6"	\$435.00
41433	3"	8"	Reinforced Perforated	6"	\$435.00
41434	4"	8"	Reinforced Perforated	6"	\$435.00
41442	2"	8"	Reinforced Perforated	8"	\$513.00
41443	3"	8"	Reinforced Perforated	8"	\$513.00
41444	4"	8"	Reinforced Perforated	8"	\$513.00
41532	2"	10"	Reinforced Perforated	6"	\$712.00
41533	3"	10"	Reinforced Perforated	6"	\$712.00
41534	4"	10"	Reinforced Perforated	6"	\$712.00
41552	2"	10"	Reinforced Perforated	10"	\$828.00
41553	3"	10"	Reinforced Perforated	10"	\$828.00
41554	4"	10"	Reinforced Perforated	10"	\$828.00
41633	3"	12"	Reinforced Perforated	6"	\$870.00
41634	4"	12"	Reinforced Perforated	6"	\$870.00
41636	6"	12"	Reinforced Perforated	6"	\$980.00
41653	3"	12"	Reinforced Perforated	10"	\$974.00
41654	4"	12"	Reinforced Perforated	10"	\$974.00
41656	6"	12"	Reinforced Perforated	10"	\$1,075.00
41874	4"	16"	Reinforced Perforated	14"	\$1,468.00
41876	6"	16"	Reinforced Perforated	14"	\$1,468.00
41878	8"	16"	Reinforced Perforated	14"	\$1,560.00

OPTIONS FOR STAINLESS STEEL, NON-ADJUSTABLE, SQUARE TOP

SUFFIX	DESCRIPTION	LIST ADD	LIST ADD	LIST ADD	LIST ADD	LIST ADD	LIST ADD	LIST ADD	LIST ADD
		41330	41430	41440	41530	41550	41630	41650	41870
-3Q	3/4 Grate	N/C	N/C	N/C	N/C	N/C	N/C	N/C	N/C
-HG	1/2 Grate	N/C	N/C	N/C	N/C	N/C	N/C	N/C	N/C
-NG	No Grate	(\$105.00)	(\$132.00)	(\$132.00)	(\$201.00)	(\$201.00)	(\$271.00)	(\$271.00)	(\$308.00)
-MG	Anti-Slip Mesh Grate	N/A	\$120.00	\$120.00	\$120.00	\$120.00	\$120.00	\$120.00	\$177.00
-SG	Perimeter Slot Plate Grate	N/A	\$356.00	\$356.00	\$356.00	\$356.00	\$356.00	\$356.00	\$504.00
-SPG	Slotted Plate Grate	N/A	N/A	N/A	N/A	N/A	\$918.00	\$918.00	N/A
-LG	Ladder Grate	\$184.00	\$510.00	\$510.00	\$510.00	\$510.00	\$510.00	\$510.00	\$551.00
-FC	Flange and Clamp	\$308.00	\$308.00	\$308.00	\$424.00	\$424.00	\$589.00	\$589.00	\$771.00
-CWD	Can Wash Spray	N/A	N/A	N/A	N/A	N/A	N/A	\$3,579.00	N/A
-DB	Dome Bottom Strainer	\$93.00	\$137.00	\$137.00	\$189.00	\$189.00	\$206.00	\$206.00	\$359.00
-FB	Filter Basket	\$93.00	\$93.00	\$93.00	\$140.00	\$140.00	\$194.00	\$194.00	\$221.00
-SB	Solid Bucket	\$93.00	\$93.00	\$93.00	\$140.00	\$140.00	\$194.00	\$194.00	\$221.00
-VP	Secured Grate	\$201.00	\$201.00	\$201.00	\$201.00	\$201.00	\$201.00	\$201.00	\$201.00
-50	1/2" Primer Tap	\$293.00	\$293.00	\$293.00	\$293.00	\$293.00	\$293.00	\$293.00	\$293.00
-SO	Side Outlet	N/A	N/A	\$158.00	N/A	\$236.00	N/A	\$314.00	N/A
-T	Threaded Outlet	P.O.A.	P.O.A.	P.O.A.	P.O.A.	P.O.A.	P.O.A.	P.O.A.	P.O.A.
-BW	Buttweld Outlet	P.O.A.	P.O.A.	P.O.A.	P.O.A.	P.O.A.	P.O.A.	P.O.A.	P.O.A.
-OPH	2"-4" Outlet Plug w/ Handle	\$229.00	\$229.00	\$229.00	\$229.00	\$229.00	\$229.00	\$229.00	\$229.00
-PFO	Push-Fit Outlet	N/C	N/C	N/C	N/C	N/C	N/C	N/C	N/C
-316	316L Stainless Steel	Plus 20%	Plus 20%	Plus 20%	Plus 20%	Plus 20%	Plus 20%	Plus 20%	Plus 20%

Note: PFO is for connections to Josam's Stainless Steel Push-Fit Drainage System

STAINLESS STEEL NON-ADJUSTABLE, ROUND TOP, NO-HUB OUTLET

SERIES NUMBER	NOM. PIPE SIZE	TOP SIZE	GRATE TYPE	BODY DEPTH	LIST PRICE
42432	2"	8"	Reinforced Perforated	6"	\$696.00
42433	3"	8"	Reinforced Perforated	6"	\$696.00
42434	4"	8"	Reinforced Perforated	6"	\$696.00
42442	2"	8"	Reinforced Perforated	8"	\$696.00
42443	3"	8"	Reinforced Perforated	8"	\$696.00
42444	4"	8"	Reinforced Perforated	8"	\$696.00
42532	2"	10"	Reinforced Perforated	6"	\$946.00
42533	3"	10"	Reinforced Perforated	6"	\$946.00
42534	4"	10"	Reinforced Perforated	6"	\$946.00
42552	2"	10"	Reinforced Perforated	10"	\$1,022.00
42553	3"	10"	Reinforced Perforated	10"	\$1,022.00
42554	4"	10"	Reinforced Perforated	10"	\$1,022.00
42633	3"	12"	Reinforced Perforated	6"	\$1,263.00
42634	4"	12"	Reinforced Perforated	6"	\$1,263.00
42636	6"	12"	Reinforced Perforated	6"	\$1,387.00
42653	3"	12"	Reinforced Perforated	10"	\$1,263.00
42654	4"	12"	Reinforced Perforated	10"	\$1,263.00
42656	6"	12"	Reinforced Perforated	10"	\$1,387.00

OPTIONS FOR STAINLESS STEEL NON-ADJUSTABLE, ROUND

SUFFIX	DESCRIPTION	LIST ADD	LIST ADD	LIST ADD	LIST ADD	LIST ADD	LIST ADD
		42430	42440	42530	42550	42630	42650
-3Q	3/4 Grate	N/C	N/C	N/C	N/C	N/C	N/C
-HG	1/2 Grate	N/C	N/C	N/C	N/C	N/C	N/C
-NG	No Grate	(\$314.00)	(\$314.00)	(\$437.00)	(\$437.00)	(\$596.00)	(\$596.00)
-MG	Anti-Slip Mesh Grate	\$120.00	\$120.00	\$120.00	\$120.00	\$120.00	\$120.00
-SG	Perimeter Slot Plate Grate	\$356.00	\$356.00	\$356.00	\$356.00	\$356.00	\$356.00
-SPG	Slotted Plate Grate	N/A	N/A	N/A	N/A	\$658.00	\$658.00
-LG	Ladder Grate	\$518.00	\$518.00	\$518.00	\$518.00	\$518.00	\$518.00
-SK	Solid Gas Tight Cover w/ Key	\$368.00	\$368.00	\$368.00	\$368.00	\$368.00	\$368.00
-SV	Solid Gas Tight Cover w/ Vacuum Handle	\$368.00	\$368.00	\$368.00	\$368.00	\$368.00	\$368.00
-FC	Flange and Clamp	\$308.00	\$308.00	\$424.00	\$424.00	\$589.00	\$589.00
-DB	Dome Bottom Strainer	\$137.00	\$137.00	\$189.00	\$189.00	\$206.00	\$206.00
-FB	Filter Basket	\$93.00	\$93.00	\$140.00	\$140.00	\$194.00	\$194.00
-SB	Solid Bucket	\$93.00	\$93.00	\$140.00	\$140.00	\$194.00	\$194.00
-VP	Secured Grate	\$201.00	\$201.00	\$201.00	\$201.00	\$201.00	\$201.00
-50	1/2" Primer Tap	\$293.00	\$293.00	\$293.00	\$293.00	\$293.00	\$293.00
-SO	Side Outlet	N/A	\$174.00	N/A	\$279.00	N/A	\$384.00
-T	Threaded Outlet	P.O.A.	P.O.A.	P.O.A.	P.O.A.	P.O.A.	P.O.A.
-BW	Buttweld Outlet	P.O.A.	P.O.A.	P.O.A.	P.O.A.	P.O.A.	P.O.A.
-OPH	2"-4" Outlet Plug w/ Handle	\$229.00	\$229.00	\$229.00	\$229.00	\$229.00	\$229.00
-PFO	Push-Fit Outlet	N/C	N/C	N/C	N/C	N/C	N/C
-316	316L Stainless Steel	Plus 20%	Plus 20%	Plus 20%	Plus 20%	Plus 20%	Plus 20%

Note: PFO is for connections to Josam's Stainless Steel Push-Fit Drainage System

STAINLESS STEEL ADJUSTABLE, SQUARE TOP, NO-HUB OUTLET

SERIES NUMBER	NOM. PIPE SIZE	TOP SIZE	GRATE TYPE	BODY DEPTH	LIST PRICE
43352	2"	6"	Reinforced Perforated	10" Max.	\$665.00
43353	3"	6"	Reinforced Perforated	10" Max.	\$665.00
43452	2"	8"	Reinforced Perforated	10" Max.	\$1,174.00
43453	3"	8"	Reinforced Perforated	10" Max.	\$1,174.00
43454	4"	8"	Reinforced Perforated	10" Max.	\$1,174.00
43572	2"	10"	Reinforced Perforated	14" Max	\$1,652.00
43573	3"	10"	Reinforced Perforated	14" Max	\$1,652.00
43574	4"	10"	Reinforced Perforated	14" Max	\$1,652.00
43673	3"	12"	Reinforced Perforated	14" Max	\$1,957.00
43674	4"	12"	Reinforced Perforated	14" Max	\$1,957.00
43676	6"	12"	Reinforced Perforated	14" Max	\$1,957.00
43894	4"	16"	Reinforced Perforated	18" Max	\$2,843.00
43896	6"	16"	Reinforced Perforated	18" Max	\$2,843.00
43898	8"	16"	Reinforced Perforated	18" Max	\$2,843.00

STAINLESS STEEL ADJUSTABLE, ROUND TOP, NO-HUB OUTLET

44572	2"	10"	Reinforced Perforated	14" Max.	\$1,731.00
44573	3"	10"	Reinforced Perforated	14" Max.	\$1,731.00
44574	4"	10"	Reinforced Perforated	14" Max.	\$1,731.00

OPTIONS FOR STAINLESS STEEL ADJUSTABLE, SQUARE TOP

SUFFIX	DESCRIPTION	LIST ADD	LIST ADD	LIST ADD	LIST ADD	LIST ADD	LIST ADD
		43350	43450	43570	43670	43890	44570
-3Q	3/4 Grate	N/C	N/C	N/C	N/C	N/C	N/C
-HG	1/2 Grate	N/C	N/C	N/C	N/C	N/C	N/C
-NG	No Grate	(\$105.00)	(\$132.00)	(\$201.00)	(\$271.00)	(\$308.00)	(\$437.00)
-MG	Anti-Slip Mesh Grate	N/A	\$120.00	\$120.00	\$120.00	\$177.00	\$120.00
-SG	Perimeter Slot Plate Grate	N/A	\$356.00	\$356.00	\$356.00	\$504.00	\$356.00
-LG	Ladder Grate	\$184.00	\$518.00	\$518.00	\$518.00	\$551.00	\$518.00
-SK	Solid Gas Tight Cover w/ Key	N/A	N/A	N/A	N/A	N/A	\$351.00
-SV	Solid Gas Tight Cover w/ Vacuum Handle	N/A	N/A	N/A	N/A	N/A	\$351.00
-DB	Dome Bottom Strainer	\$93.00	\$137.00	\$153.00	\$206.00	\$307.00	\$153.00
-FB	Filter Basket	\$93.00	\$93.00	\$140.00	\$194.00	\$221.00	\$140.00
-SB	Solid Bucket	\$93.00	\$93.00	\$140.00	\$194.00	\$221.00	\$140.00
-VP	Secured Grate	\$201.00	\$201.00	\$201.00	\$201.00	\$201.00	\$201.00
-50	1/2" Primer Tap	\$293.00	\$293.00	\$293.00	\$293.00	\$293.00	\$293.00
-SO	Side Outlet	N/A	\$308.00	\$340.00	\$420.00	N/A	\$279.00
-T	Threaded Outlet	P.O.A.	P.O.A.	P.O.A.	P.O.A.	P.O.A.	P.O.A.
-BW	Buttweld Outlet	P.O.A.	P.O.A.	P.O.A.	P.O.A.	P.O.A.	P.O.A.
-OPH	2"-4" Outlet Plug w/ Handle	\$229.00	\$229.00	\$229.00	\$229.00	\$229.00	\$229.00
-PFO	Push-Fit Outlet	N/C	N/C	N/C	N/C	N/C	N/C
-316	316L Stainless Steel	Plus 20%	Plus 20%	Plus 20%	Plus 20%	Plus 20%	Plus 20%

Note: PFO is for connections to Josam's Stainless Steel Push-Fit Drainage System

6" SQUARE REPLACEMENT GRATES

PART NUMBER	GRATE TYPE	LIST PRICE
41300.PERFGRT	Reinforced Perforated	\$105.00
41300.PRFGRT.HG	1/2 Reinforced Perforated	\$105.00
41300.PRFGRT.3Q	3/4 Reinforced Perforated	\$105.00
41300.LADGRT	Ladder	\$288.00

8" SQUARE REPLACEMENT GRATES

41400.PERFGRT	Reinforced Perforated	\$132.00
41400.PFGRT.HG	1/2 Reinforced Perforated	\$132.00
41400.PFGRT.3Q	3/4 Reinforced Perforated	\$132.00
41400.MESHGRT	Anti-Slip Mesh	\$252.00
41400.PLATEGRT	Perimeter Slot Plate Grate	\$488.00
41400.LADGRT	Ladder	\$649.00

10" SQUARE REPLACEMENT GRATES

41500.PERFGRT	Reinforced Perforated	\$201.00
41500.PFGRT.HG	1/2 Reinforced Perforated	\$201.00
41500.PFGRT.3Q	3/4 Reinforced Perforated	\$201.00
41500.MESHGRT	Anti-Slip Mesh	\$321.00
41500.PLATEGRT	Perimeter Slot Plate Grate	\$557.00
41500.LADGRT	Ladder	\$718.00

12" SQUARE REPLACEMENT GRATES

41600.PERFGRT	Reinforced Perforated	\$271.00
41600.PFGRT.HG	1/2 Reinforced Perforated	\$271.00
41600.PFGRT.3Q	3/4 Reinforced Perforated	\$271.00
41600.MESHGRT	Anti-Slip Mesh	\$392.00
41600.PLATEGRT	Perimeter Slot Plate Grate	\$628.00
41600.SLTPLTGRT	Slotted Plate Grate	\$1,189.00
41600.LADGRT	Ladder	\$788.00

16" SQUARE REPLACEMENT GRATES

41800.PERFGRT	Reinforced Perforated	\$308.00
41800.PFGRT.HG	1/2 Reinforced Perforated	\$308.00
41800.PFGRT.3Q	3/4 Reinforced Perforated	\$308.00
41800.MESHGRT	Anti-Slip Mesh	\$486.00
41800.PLATEGRT	Perimeter Slot Plate Grate	\$812.00
41800.LADGRT	Ladder	\$1,076.00

8" ROUND REPLACEMENT GRATES

42400.PERFGRT	Reinforced Perforated	\$314.00
42400.PRFGRT.HG	1/2 Reinforced Perforated	\$314.00
42400.PRFGRT.3Q	3/4 Reinforced Perforated	\$314.00
42400.MESHGRT	Anti-Slip Mesh	\$435.00
42400.PLATEGRT	Perimeter Slot Plate Grate	\$670.00
42400.LADGRT	Ladder	\$831.00
42400.VACSK	Solid Gas Tight with Key	\$683.00
42400.VACSV	Sold Gas Tight with Vacuum Handle	\$683.00

10" ROUND REPLACEMENT GRATES

PART NUMBER	GRATE TYPE	LIST PRICE
42500.PERFGRT	Reinforced Perforated	\$437.00
42500.PRFGRT.HG	1/2 Reinforced Perforated	\$437.00
42500.PRFGRT.3Q	3/4 Reinforced Perforated	\$437.00
42500.MESHGRT	Anti-Slip Mesh	\$557.00
42500.PLATEGRT	Perimeter Slot Plate Grate	\$793.00
42500.LADGRT	Ladder	\$954.00
42500.VACSK	Solid Gas Tight with Key	\$804.00
42500.VACSV	Sold Gas Tight with Vacuum Handle	\$804.00

12" ROUND REPLACEMENT GRATES

42600.PERFGRT	Reinforced Perforated	\$596.00
42600.PRFGRT.HG	1/2 Reinforced Perforated	\$596.00
42600.PRFGRT.3Q	3/4 Reinforced Perforated	\$596.00
42600.MESHGRT	Anti-Slip Mesh	\$715.00
42600.PLATEGRT	Perimeter Slot Plate Grate	\$951.00
42600.SLTPLTGRT	Slotted Plate Grate	\$1,255.00
42600.LADGRT	Ladder	\$1,111.00

STAINLESS STEEL SQUARE TOP RETROFIT LINER

SERIES NUMBER	NOM. PIPE SIZE	TOP SIZE	GRATE TYPE	BODY DEPTH	LIST PRICE
45432	2"	8"	Reinforced Perforated	6"	\$337.00
45433	3"	8"	Reinforced Perforated	6"	\$337.00
45434	4"	8"	Reinforced Perforated	6"	\$337.00
45632	2"	12"	Reinforced Perforated	6"	\$692.00
45633	3"	12"	Reinforced Perforated	6"	\$692.00
45634	4"	12"	Reinforced Perforated	6"	\$692.00
45642	2"	12"	Reinforced Perforated	8"	\$751.00
45643	3"	12"	Reinforced Perforated	8"	\$751.00
45644	4"	12'	Reinforced Perforated	8"	\$751.00
45652	2"	12"	Reinforced Perforated	10"	\$807.00
45653	3"	12"	Reinforced Perforated	10"	\$807.00
45654	4"	12"	Reinforced Perforated	10"	\$807.00
45832	2"	16"	Reinforced Perforated	6"	\$914.00
45833	3"	16"	Reinforced Perforated	6"	\$914.00
45834	4"	16"	Reinforced Perforated	6"	\$914.00
45836	6"	16"	Reinforced Perforated	6"	\$1,076.00
45838	8"	16"	Reinforced Perforated	6"	\$1,175.00
45862	2"	16"	Reinforced Perforated	12"	\$1,086.00
45863	3"	16"	Reinforced Perforated	12"	\$1,086.00
45864	4"	16"	Reinforced Perforated	12"	\$1,086.00
45866	6"	16"	Reinforced Perforated	12"	\$1,248.00
45868	8"	16'	Reinforced Perforated	12"	\$1,347.00

STAINLESS STEEL SQUARE TOP RETROFIT LINER COMPONENT PRICING

SERIES NUMBER	NOM. PIPE SIZE	TOP SIZE	GRATE TYPE	BODY DEPTH	LIST PRICE
45432.BODY	2"	8"		6"	\$232.00
45432.BODY.BE	2"	8" w/ Bent Edge		6"	\$269.00
45433.BODY	3"	8"		6"	\$232.00
45433.BODY.BE	3"	8" w/ Bent Edge		6"	\$269.00
45434.BODY	4"	8"		6"	\$232.00
45434.BODY.BE	4"	8" w/ Bent Edge		6"	\$269.00
41300.PERFGRT		6"	Reinforced Perforated		\$105.00
41300.PFGRT-HG		6"	1/2 Grate		\$105.00
41300.PFGRT-3Q		6"	3/4 Grate		\$105.00
41300.LADGRT.		6"	Ladder		\$288.00
45632.BODY	2"	12"		6"	\$470.00
45632.BODY.BE	2"	12" w/ Bent Edge		6"	\$521.00
45633.BODY	3"	12"		6"	\$470.00
45633.BODY.BE	3"	12" w/ Bent Edge		6"	\$521.00
45634.BODY	4"	12"		6"	\$470.00
45634.BODY.BE	4"	12" w/ Bent Edge		6"	\$521.00
45642.BODY	2"	12"		8"	\$550.00
45642.BODY.BE	2"	12" w/ Bent Edge		8"	\$576.00
45643.BODY	3"	12"		8"	\$550.00
45643.BODY.BE	3"	12" w/ Bent Edge		8"	\$576.00
45644.BODY	4"	12"		8"	\$576.00
45644.BODY.BE	4"	12" w/ Bent Edge		8"	\$576.00
45652.BODY	2"	12"		10"	\$576.00
45652.BODY.BE	2"	12" w/ Bent Edge		10"	\$635.00
45653.BODY	3"	12"		10"	\$576.00
45653.BODY.BE	3"	12" w/ Bent Edge		10"	\$635.00
45654.BODY	4"	12"		10"	\$576.00
45654.BODY.BE	4"	12" w/ Bent Edge		10"	\$626.00
45600.PERFGRT		10"	Reinforced Perforated		\$201.00
45600.PFGRT-HG		10"	1/2 Grate		\$201.00
45600.PFGRT-3Q		10"	3/4 Grate		\$201.00
45600.MESHGRT		10"	Anti-Slip Mesh		\$321.00
45600.PLATEGRT		10"	Perimeter Slot Plate Grate		\$557.00
45600.LADGRT	4"	10"	Ladder		\$718.00

STAINLESS STEEL SQUARE TOP RETROFIT LINER COMPONENT PRICING

SERIES NUMBER	NOM. PIPE SIZE	TOP SIZE	GRATE TYPE	BODY DEPTH	LIST PRICE
45832.BODY	2"	16"		6"	\$642.00
45832.BODY.BE	2"	16"		6"	\$663.00
45833.BODY	3"	16"		6"	\$642.00
45833.BODY.BE	3"	16"		6"	\$663.00
45834.BODY	4"	16"		6"	\$642.00
45834.BODY.BE	4"	16"		6"	\$663.00
45836.BODY	6"	16"		6"	\$806.00
45836.BODY.BE	6"	16"		6"	\$828.00
45838.BODY	8"	16"		6"	\$903.00
45838.BODY.BE	8"	16"		6"	\$924.00
45862.BODY	2"	16"		12"	\$815.00
45862.BODY.BE	2"	16"		12"	\$836.00
45863.BODY	3"	16"		12"	\$819.00
45863.BODY.BE	3"	16"		12"	\$836.00
45864.BODY	4"	16"		12"	\$815.00
45864.BODY.BE	4"	16"		12"	\$836.00
45866.BODY	6"	16"		12"	\$980.00
45866.BODY.BE	6"	16"		12"	\$1,001.00
45868.BODY	8"	16"		12"	\$1,075.00
45868.BODY.BE	8"	16"		12"	\$1,097.00
41600.PERFGRT		12"	Reinforced Perforated		\$271.00
41600.PFGRT-HG		12"	1/2 Grate		\$271.00
41600.PFGRT-3Q		12"	3/4 Grate		\$271.00
41600.MESHGRT		12"	Anti-Slip Mesh		\$392.00
41600.PLATEGRT		12"	Perimeter Slot Plate Grate		\$628.00
41600.LADGRT		12"	Ladder		\$788.00

OPTIONS FOR STAINLESS STEEL RETROFIT LINER

SUFFIX	DESCRIPTION	LIST ADD	LIST ADD	LIST ADD	LIST ADD	LIST ADD	LIST ADD
		45430	45630	45640	45650	45830	45860
-3Q	3/4 Grate	N/C	N/C	N/C	N/C	N/C	N/C
-HG	1/2 Grate	N/C	N/C	N/C	N/C	N/C	N/C
-NG	No Grate	(\$105.00)	(\$201.00)	(\$201.00)	(\$201.00)	(\$271.00)	(\$271.00)
-MG	Anti-Slip Mesh Grate	N/A	\$113.00	\$113.00	\$113.00	\$271.00	\$271.00
-SG	Perimeter Slot Plate Grate	\$356.00	\$356.00	\$356.00	\$356.00	\$356.00	\$356.00
-LG	Ladder Grate	\$184.00	\$518.00	\$518.00	\$518.00	\$518.00	\$518.00
-FB	Filter Basket	\$93.00	\$140.00	\$140.00	\$140.00	\$194.00	\$194.00
-SB	Solid Bucket	\$93.00	\$140.00	\$140.00	\$140.00	\$194.00	\$194.00
-VP	Secured Grate	\$201.00	\$201.00	\$201.00	\$201.00	\$201.00	\$201.00
-316	316L Stainless Steel	Plus 20%	Plus 20%	Plus 20%	Plus 20%	Plus 20%	Plus 20%

STAINLESS STEEL SQUARE TOP CLEANOUTS

SERIES NUMBER	NOM. PIPE SIZE	TOP SIZE	GRATE TYPE	LIST PRICE
41303	3"	6"	Smooth Heavy Duty Gasketed	\$499.00
41304	4"	6"	Smooth Heavy Duty Gasketed	\$499.00
41403	3"	8"	Smooth Heavy Duty Gasketed	\$576.00
41404	4"	8"	Smooth Heavy Duty Gasketed	\$576.00
41406	6"	8"	Smooth Heavy Duty Gasketed	\$655.00
41504	4"	10"	Smooth Heavy Duty Gasketed	\$672.00
41506	6"	10"	Smooth Heavy Duty Gasketed	\$672.00
41508	8"	10"	Smooth Heavy Duty Gasketed	\$751.00

STAINLESS STEEL ROUND TOP CLEANOUTS

SERIES NUMBER	NOM. PIPE SIZE	TOP SIZE	GRATE TYPE	LIST PRICE
42302	2"	6"	Smooth Heavy Duty Gasketed	\$599.00
42303	3"	6"	Smooth Heavy Duty Gasketed	\$599.00
42304	4"	6"	Smooth Heavy Duty Gasketed	\$625.00
42403	3"	8"	Smooth Heavy Duty Gasketed	\$693.00
42404	4"	8"	Smooth Heavy Duty Gasketed	\$751.00
42406	6"	8"	Smooth Heavy Duty Gasketed	\$751.00
42504	4"	10"	Smooth Heavy Duty Gasketed	\$807.00
42506	6"	10"	Smooth Heavy Duty Gasketed	\$807.00
42508	8"	10"	Smooth Heavy Duty Gasketed	\$904.00

OPTIONS FOR STAINLESS STEEL ROUND AND SQUARE TOP CLEANOUTS

SUFFIX	LIST DESCRIPTION	ADD
-DP	Diamond Plate	N/C
-IP	Gasketed Internal Plug	\$203.00
-BW	Buttweld Outlet (Specify Schedule)	P.O.A.
-PFO	Push-Fit Outlet	N/C
-OPH	2"-4" Outlet Plug w/ Handle	\$229.00

Note: PFO is for connections to Josam's Stainless Steel Push-Fit Drainage System

6" WIDE STAINLESS STEEL TRENCH DRAIN

SERIES NUMBER	NOM. PIPE SIZE	GRATE TYPE	LIST PRICE OUTLET + PER FOOT	LIST PRICE 6FT TRENCH
46312	2"	Reinforced Perforated	*\$174.00 + \$696.00	\$4,350.00
46322	2"	Anti-Slip Mesh	*\$174.00 + \$865.00	\$5,364.00
46332	2"	Perimeter Slot Plate Grate	*\$174.00 + \$1,235.00	\$7,584.00
46342	2"	Ladder	*\$174.00 + \$1,037.00	\$6,396.00
46313	3"	Reinforced Perforated	*\$174.00 + \$696.00	\$4,350.00
46323	3"	Anti-Slip Mesh	*\$174.00 + \$865.00	\$5,364.00
46333	3"	Perimeter Slot Plate Grate	*\$174.00 + \$1,235.00	\$7,584.00
46343	3"	Ladder	*\$174.00 + \$1,037.00	\$6,392.00
46314	4"	Reinforced Perforated	*\$174.00 + \$696.00	\$4,350.00
46324	4"	Anti-Slip Mesh	*\$174.00 + \$865.00	\$5,364.00
46334	4"	Perimeter Slot Plate Grate	*\$174.00 + \$1,235.00	\$7,584.00
46344	4"	Ladder	*\$174.00 + \$1,037.00	\$6,396.00

*List prices above include one outlet and two end caps. For each additional outlet and set of 2 end caps add \$174.00. Indicate total length of trench drain after series number. Trench drains over 13 feet long provided with flanged connections.

8" WIDE STAINLESS STEEL TRENCH DRAIN

SERIES NUMBER	NOM. PIPE SIZE	GRATE TYPE	LIST PRICE OUTLET + PER FOOT	LIST PRICE 6FT TRENCH
46412	2"	Reinforced Perforated	*\$174.00 + \$880.00	\$5,454.00
46422	2"	Anti-Slip Mesh	*\$174.00 + \$1,022.00	\$6,306.00
46432	2"	Perimeter Slot Plate Grate	*\$174.00 + \$1,600.00	\$9,774.00
46442	2"	Ladder	*\$174.00 + \$1,233.00	\$7,572.00
46413	3"	Reinforced Perforated	*\$174.00 + \$880.00	\$5,454.00
46423	3"	Anti-Slip Mesh	*\$174.00 + \$1,022.00	\$6,306.00
46433	3"	Perimeter Slot Plate Grate	*\$174.00 + \$1,600.00	\$9,774.00
46443	3"	Ladder	*\$174.00 + \$1,233.00	\$7,572.00
46414	4"	Reinforced Perforated	*\$174.00 + \$880.00	\$5,454.00
46424	4"	Anti-Slip Mesh	*\$174.00 + \$1,022.00	\$6,306.00
46434	4"	Perimeter Slot Plate Grate	*\$174.00 + \$1,600.00	\$9,774.00
46444	4"	Ladder	*\$174.00 + \$1,233.00	\$7,572.00

*List prices above include one outlet and two end caps. For each additional outlet and set of 2 end caps add \$174.00. Indicate total length of trench drain after series number. Trench drains over 13 feet long provided with flanged connections.

12" WIDE STAINLESS STEEL TRENCH DRAIN

SERIES NUMBER	NOM. PIPE SIZE	GRATE TYPE	LIST PRICE OUTLET + PER FOOT	LIST PRICE 6' TRENCH
46612	2"	Reinforced Perforated	*\$174.00 + \$1,166.00	\$7,170.00
46622	2"	Anti-Slip Mesh	*\$174.00 + \$1,258.00	\$7,722.00
46632	2"	Perimeter Slot Plate Grate	*\$174.00 + \$2,230.00	\$13,554.00
46642	2"	Ladder	*\$174.00 + \$1,545.00	\$9,444.00
46613	3"	Reinforced Perforated	*\$174.00 + \$1,166.00	\$7,170.00
46623	3"	Anti-Slip Mesh	*\$174.00 + \$1,258.00	\$7,722.00
46633	3"	Perimeter Slot Plate Grate	*\$174.00 + \$2,230.00	\$13,554.00
46643	3"	Ladder	*\$174.00 + \$1,545.00	\$9,444.00
46614	4"	Reinforced Perforated	*\$174.00 + \$1,166.00	\$7,170.00
46624	4"	Anti-Slip Mesh	*\$174.00 + \$1,258.00	\$7,722.00
46634	4"	Perimeter Slot Plate Grate	*\$174.00 + \$2,230.00	\$13,554.00
46644	4"	Ladder	*\$174.00 + \$1,545.00	\$9,444.00
46616	6"	Reinforced Perforated	*\$174.00 + \$1,166.00	\$7,170.00
46626	6"	Anti-Slip Mesh	*\$174.00 + \$1,258.00	\$7,722.00
46636	6"	Perimeter Slot Plate Grate	*\$174.00 + \$2,230.00	\$13,554.00
46646	6"	Ladder	*\$174.00 + \$1,545.00	\$9,444.00
46618	8"	Reinforced Perforated	*\$174.00 + \$1,166.00	\$7,170.00
46628	8"	Anti-Slip Mesh	*\$174.00 + \$1,258.00	\$7,722.00
46638	8"	Perimeter Slot Plate Grate	*\$174.00 + \$2,230.00	\$13,554.00
46648	8"	Ladder	*\$174.00 + \$1,545.00	\$9,444.00

*List prices above include one outlet and two end caps. For each additional outlet and set of 2 end caps add \$174.00. Indicate total length of trench drain after series number. Trench drains over 13 feet long provided with flanged connections.

12" WIDE STAINLESS STEEL ELEVATOR TRENCH DRAIN

SERIES NUMBER	NOM. PIPE SIZE	GRATE TYPE	LIST PRICE OUTLET + PER FOOT	LIST PRICE 6' TRENCH
46600-ET	4"	Longitudinal Slot	*\$174.00 + \$2,230.00	\$13,554.00

*List prices above include one outlet and two end caps. For each additional outlet and set of 2 end caps add \$174.00. Indicate total length of trench drain after series number. Trench drains over 13 feet long provided with flanged connections.

16" WIDE STAINLESS STEEL TRENCH DRAIN

SERIES NUMBER	NOM. PIPE SIZE	GRATE TYPE	LIST PRICE OUTLET + PER FOOT	LIST PRICE 6' TRENCH
46812	2"	Reinforced Perforated	*\$174.00 + \$1,352.00	\$8,286.00
46822	2"	Anti-Slip Mesh	*\$174.00 + \$1,468.00	\$8,982.00
46832	2"	Perimeter Slot Plate Grate	*\$174.00 + \$2,700.00	\$16,374.00
46842	2"	Ladder	*\$174.00 + \$1,822.00	\$11,106.00
46813	3"	Reinforced Perforated	*\$174.00 + \$1,352.00	\$8,286.00
46823	3"	Anti-Slip Mesh	*\$174.00 + \$1,468.00	\$8,982.00
46833	3"	Perimeter Slot Plate Grate	*\$174.00 + \$2,700.00	\$16,374.00
46843	3"	Ladder	*\$174.00 + \$1,822.00	\$11,106.00
46814	4"	Reinforced Perforated	*\$174.00 + \$1,352.00	\$8,286.00
46824	4"	Anti-Slip Mesh	*\$174.00 + \$1,468.00	\$8,982.00
46834	4"	Perimeter Slot Plate Grate	*\$174.00 + \$2,700.00	\$16,374.00
46844	4"	Ladder	*\$174.00 + \$1,822.00	\$11,106.00
46816	6"	Reinforced Perforated	*\$174.00 + \$1,352.00	\$8,286.00
46826	6"	Anti-Slip Mesh	*\$174.00 + \$1,468.00	\$8,982.00
46836	6"	Perimeter Slot Plate Grate	*\$174.00 + \$2,700.00	\$16,374.00
46846	6"	Ladder	*\$174.00 + \$1,822.00	\$11,106.00
46818	8"	Reinforced Perforated	*\$174.00 + \$1,352.00	\$8,286.00
46828	8"	Anti-Slip Mesh	*\$174.00 + \$1,468.00	\$8,982.00
46838	8"	Perimeter Slot Plate Grate	*\$174.00 + \$2,700.00	\$16,374.00
46848	8"	Ladder	*\$174.00 + \$1,822.00	\$11,106.00

*List prices above include one outlet and two end caps. For each additional outlet and set of 2 end caps add \$174.00. Indicate total length of trench drain after series number. Trench drains over 13 feet long provided with flanged connections.

OPTIONS FOR STAINLESS STEEL TRENCH DRAINS

SUFFIX	DESCRIPTION	LIST ADD	LIST ADD	LIST ADD	LIST ADD
		46300	46400	46600	46800
-FB	Filter Basket for 2" & 3" Outlet	\$45.00	\$45.00	\$45.00	\$45.00
-FB	Filter Basket for 4" & 6" Outlet	\$89.00	\$89.00	\$89.00	\$89.00
-FB	Filter Basket for 8" Outlet	\$132.00	\$132.00	\$132.00	\$132.00
-SB	Solid Bucket for 2" & 3" Outlet	N/A	N/A	N/A	N/A
-SB	Solid Bucket for 4" & 6" Outlet	\$89.00	\$89.00	\$89.00	\$89.00
-SB	Solid Bucket for 8" Outlet	\$140.00	\$140.00	\$140.00	\$140.00
-VP	Secured Grate	\$174 per foot	\$174 per foot	\$174 per foot	\$174 per foot
-LT	Two Removable Screens & Filter Basket	N/A	N/A	\$971.00	N/A
-T	Threaded 2", 3", & 4" Outlet	\$866.00	\$866.00	\$866.00	\$866.00
-T	Threaded 6" Outlet	\$1,181.00	\$1,181.00	\$1,181.00	\$1,181.00
-T	Threaded 8" Outlet	\$1,313.00	\$1,313.00	\$1,313.00	\$1,313.00
-BW	Buttweld Outlet	P.O.A.	P.O.A.	P.O.A.	P.O.A.
-FC	Flange and Clamp	\$167 per foot	\$167 per foot	\$167 per foot	\$167 per foot
-OPH	2"-4" Outlet Plug w/ Handle	\$229.00	\$229.00	\$229.00	\$229.00
-MRO	Mid-Run Outlet	N/C	N/C	N/C	N/C
-EBO	End Bottom Outlet	N/C	N/C	N/C	N/C
-PFO	Push-Fit Outlet	N/C	N/C	N/C	N/C
-316	316L Stainless Steel	Plus 20%	Plus 20%	Plus 20%	Plus 20%

Note: PFO is for connections to Josam's Stainless Steel Push-Fit Drainage System

HEEL-PROOF STAINLESS STEEL SLOT TRENCH DRAIN (5/16")

SERIES NUMBER	NOM. PIPE SIZE	OUTLET BOX GRATE TYPE	STANDARD 2" OUTLET NO OUTLET BOX	LIST PRICE PER OUTLET BOX	SLOT CHANNEL LIST PRICE / FOOT
47112	2"	Reinforced Perforated	\$174.00	\$384.00	\$437.00
47122	2"	Anti-Slip Mesh	\$174.00	\$498.00	\$437.00
47132	2"	Perimeter Slot Plate Grate	\$174.00	\$723.00	\$437.00
47142	2"	Ladder	\$174.00	\$877.00	\$437.00
47113	3"	Reinforced Perforated	\$174.00	\$384.00	\$437.00
47123	3"	Anti-Slip Mesh	\$174.00	\$498.00	\$437.00
47133	3"	Perimeter Slot Plate Grate	\$174.00	\$723.00	\$437.00
47143	3"	Ladder	\$174.00	\$877.00	\$437.00
47114	4"	Reinforced Perforated	\$174.00	\$384.00	\$437.00
47124	4"	Anti-Slip Mesh	\$174.00	\$498.00	\$437.00
47134	4"	Perimeter Slot Plate Grate	\$174.00	\$723.00	\$437.00
47144	4"	Ladder	\$174.00	\$877.00	\$437.00

STANDARD STAINLESS STEEL SLOT TRENCH DRAIN (3/4")

47212	2"	Reinforced Perforated	\$174.00	\$384.00	\$437.00
47222	2"	Anti-Slip Mesh	\$174.00	\$498.00	\$437.00
47232	2"	Perimeter Slot Plate Grate	\$174.00	\$723.00	\$437.00
47242	2"	Ladder	\$174.00	\$877.00	\$437.00
47213	3"	Reinforced Perforated	\$174.00	\$384.00	\$437.00
47223	3"	Anti-Slip Mesh	\$174.00	\$498.00	\$437.00
47233	3"	Perimeter Slot Plate Grate	\$174.00	\$723.00	\$437.00
47243	3"	Ladder	\$174.00	\$877.00	\$437.00
47214	4"	Reinforced Perforated	\$174.00	\$384.00	\$437.00
47224	4"	Anti-Slip Mesh	\$174.00	\$498.00	\$437.00
47234	4"	Perimeter Slot Plate Grate	\$174.00	\$723.00	\$437.00
47244	4"	Ladder	\$174.00	\$877.00	\$437.00

MINI 3" WIDE STAINLESS STEEL CHANNEL AND GRATING FOR USE WITH AN OUTLET BOX

SERIES NUMBER	NOM. PIPE SIZE	OUTLET BOX GRATE TYPE	STANDARD 2" OUTLET NO OUTLET BOX	LIST PRICE PER OUTLET BOX	SLOT CHANNEL LIST PRICE / FOOT
47312	2"	Reinforced Perforated	\$174.00	\$384.00	\$489.00
47322	2"	Anti-Slip Mesh	\$174.00	\$498.00	\$524.00
47332	2"	Perimeter Slot Plate Grate	\$174.00	\$723.00	\$636.00
47342	2"	Ladder	\$174.00	\$877.00	\$568.00
47313	3"	Reinforced Perforated	\$174.00	\$384.00	\$489.00
47323	3"	Anti-Slip Mesh	\$174.00	\$498.00	\$524.00
47233	3"	Perimeter Slot Plate Grate	\$174.00	\$723.00	\$636.00
47243	3"	Ladder	\$174.00	\$877.00	\$568.00
47314	4"	Reinforced Perforated	\$174.00	\$384.00	\$489.00
47324	4"	Anti-Slip Mesh	\$174.00	\$498.00	\$524.00
47334	4"	Perimeter Slot Plate Grate	\$174.00	\$723.00	\$636.00
47344	4"	Ladder	\$174.00	\$877.00	\$568.00

OPTIONS FOR OUTLET BOX

SUFFIX	LIST DESCRIPTION	ADD
-FB	Filter Basket	\$89.00
-SB	Solid Bucket	\$89.00
-VP	Secured Grate	\$193.00
-50	1/2" Primer Tap	\$279.00
-SO	Side Outlet	N/A
-T	Threaded Outlet	P.O.A.
-BW	Buttweld Outlet	P.O.A.
-MRO	Mid-Run Outlet Box	N/C
-EBO	End Bottom Outlet Box	N/C
-OPH	2"-4" Outlet Plug w/ Handle	\$229.00
-PFO	Push-Fit Outlet	N/C
-316	316L Stainless Steel	Plus 20%

Note: PFO is for connections to Josam's Stainless Steel Push-Fit Drainage System

STAINLESS STEEL SHOWER CHANNELS

SERIES NUMBER	NOM. PIPE SIZE	TOP SIZE	GRATE TYPE	LIST PRICE PER 2' CHANNEL/GRATE	LIST PRICE ADD PER ADD'L INCH
46212	2"	3.5"	Balena	\$1,048.00	\$36.00
46222	2"	3.5"	Spigola	\$1,048.00	\$36.00
46232	2"	3.5"	Vipera	\$1,048.00	\$36.00
46242	2"	3.5"	Murena	\$1,048.00	\$36.00
46252	2"	3.5"	Goccia	\$1,048.00	\$36.00
46262	2"	3.5"	Pietra	\$1,048.00	\$36.00

OPTIONS FOR STAINLESS STEEL SHOWER CHANNELS

SUFFIX	LIST DESCRIPTION	ADD
-PF	Polished Finish	N/C
-MF	Matte/Brushed Finish	N/C
-FB	Filter Basket	\$89.00
-BW	Buttweld Outlet (Specify Schedule)	P.O.A.
-FC	Flange Clamp	\$79 per foot
-FCO	Flange Clamp Outlet	\$264.00
-45	45 Degree Angle Modification	\$437.00
-90	90 Degree Angle Modification	\$437.00
-OPH	2"-4" Outlet Plug w/ Handle	\$229.00
-316L	316L Stainless Steel	Plus 20%

CAST STAINLESS STEEL ADJUSTABLE, ROUND TOP, THREADED OUTLET

SERIES NUMBER	NOM. PIPE SIZE	TOP SIZE	LIST PRICE
30002-5A-T-SS	2"	5"	\$2,399.00
30003-5A-T-SS	3"	5"	\$2,399.00
30004-5A-T-SS	4"	5"	\$2,399.00
30002-6A-T-SS	2"	6"	\$2,435.00
30003-6A-T-SS	3"	6"	\$2,435.00
30004-6A-T-SS	4"	6"	\$2,435.00
30002-7A-T-SS	2"	7"	\$2,536.00
30003-7A-T-SS	3"	7"	\$2,536.00
30004-7A-T-SS	4"	7"	\$2,536.00
30002-8A-T-SS	2"	8"	\$2,591.00
30003-8A-T-SS	3"	8"	\$2,591.00
30004-8A-T-SS	4"	8"	\$2,591.00

CAST STAINLESS STEEL ADJUSTABLE, SQUARE TOP, THREADED OUTLET

SERIES NUMBER	NOM. PIPE SIZE	TOP SIZE	LIST PRICE
30002-5S-T-SS	2"	5"	\$2,472.00
30003-5S-T-SS	3"	5"	\$2,472.00
30004-5S-T-SS	4"	5"	\$2,472.00
30002-6S-T-SS	2"	6"	\$2,573.00
30003-6S-T-SS	3"	6"	\$2,573.00
30004-6S-T-SS	4"	6"	\$2,573.00
30002-8S-T-SS	2"	8"	\$2,626.00
30003-8S-T-SS	3"	8"	\$2,626.00
30004-8S-T-SS	4"	8"	\$2,626.00

CAST STAINLESS STEEL NON-ADJUSTABLE, ROUND TOP, SCH 40 BUTT WELD OUTLET

32102-SS	2"	9"	\$3,075.00
32103-SS	3"	9"	\$3,075.00
32104-SS	4"	9"	\$3,075.00
32203-SS	3"	12"	\$5,287.00
32204-SS	4"	12"	\$5,287.00
32206-SS	6"	12"	\$6,249.00

CAST STAINLESS STEEL ADJUSTABLE, ROUND TOP, SCH 40 BUTT WELD OUTLET

32102-AE-SS	2"	9"	\$4,038.00
32103-AE-SS	3"	9"	\$4,038.00
32104-AE-SS	4"	9"	\$4,038.00
32203-AE-SS	3"	12"	\$7,209.00
32204-AE-SS	4"	12"	\$7,209.00

CAST STAINLESS STEEL ROUND TOP SPANNER TYPE CLEANOUT, SCH 40 BUTT WELD OUTLET

56672-SS	2"	4"	\$3,075.00
56673-SS	3"	5"	\$3,075.00
56674-SS	4"	6"	\$3,075.00
56676-SS	6"	8"	\$3,846.00

OPTIONS FOR CAST STAINLESS STEEL FLOOR DRAINS AND CLEANOUTS

SUFFIX	DESCRIPTION	LIST ADD	LIST ADD	LIST ADD	LIST ADD
		30000-A/30000-S	32100/32100-AE	32200/32200-AE	56670
-8	Solid Cover	N/A	\$770.00	\$1,443.00	N/A
-9	Stainless Steel Mesh on Underside of Grate	N/A	\$193.00	\$290.00	N/A
-21	4" Diameter Funnel	\$384.00	\$384.00	\$384.00	N/A
w-22	6" Diameter Funnel	\$576.00	\$576.00	\$576.00	N/A
-25	Stainless Steel Recessed Closure Plug	N/A	\$576.00	\$576.00	N/A
-26	ABS Recessed Closure Plug	N/A	\$240.00	\$240.00	N/A
-34	"T" Handle for Recessed Plug	N/A	\$59.00	\$59.00	N/A
-45	Spanner Wrench	N/A	N/A	N/A	\$145.00
-50	1/2" Primer Tap	\$293.00	\$293.00	\$293.00	N/A
-61	Flashing Clamp Device	N/A	\$914.00	\$1,155.00	N/A
-69	Schedule 10 Butt Weld Outlet	N/A	P.O.A.	P.O.A.	P.O.A.
-80	Stainless Steel Perforated Basket	\$40.00	N/A	N/A	N/A
-81	Cast Slotted Stainless Steel Bucket	N/A	\$1,028.00	N/A	N/A
-VP	Secured Grate	\$20.00	N/A	N/A	N/A

STAINLESS STEEL FLOOR DRAIN W/SURFACE CLAMP

SERIES NUMBER	NOM. PIPE SIZE	SQUARE TOP SIZE	LIST PRICE
45132	2"	12"	\$1,401.00
45133	3"	12"	\$1,401.00
45134	4"	12"	\$1,401.00
45136	6"	12"	\$1,401.00

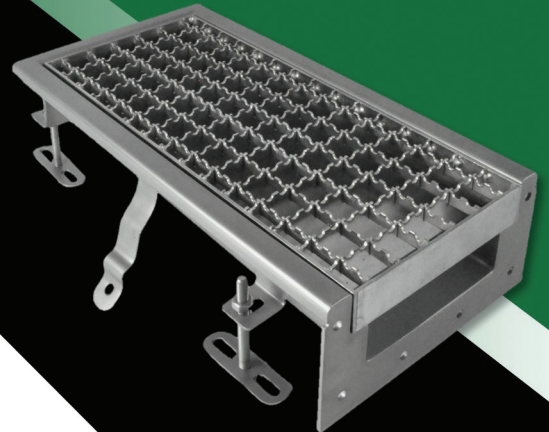
45130 Series - fabricated 16 gage stainless steel (Type 304 std.), 12" square top, 6" deep, with bottom No-Hub Outlet and internal clamp for securing flooring at the surface. Comes with 1/2 reinforced perforated grate.

OPTIONS FOR STAINLESS STEEL FLOOR DRAIN W/SURFACE CLAMP

SERIES NUMBER	DESCRIPTION	LIST ADD
-FB	Filter Basket	\$194.00
-HG	1/2 Reinforced Perf. Grate	N/C
-LG	Ladder Grate	\$510.00
-MG	Anti-Slip Mesh Grate	\$120.00
-NG	No Grate	Deduct (\$271.00)
-SB	Sediment Bucket	\$194.00
-SG	Solid Grate w/Perimeter Drainage	\$356.00
-VP	Secured Grate	\$201.00
-3Q	3/4 Reinforced Perf. Grate	N/C
-316	316L Stainless Steel	Plus 20%
-50	1/2" Primer Tap	\$293.00
-BW	Butt Weld (Sch 10, 40 or 80)	P.O.A.
-OPH	2"-4" Outlet Plug w/ Handle	\$229.00
-NH	No-Hub Outlet	N/C
-PFO	Push-Fit Outlet	N/C
-T	Threaded Outlet	P.O.A.

Note: PFO is for connections to Josam's Stainless Steel Push-Fit Drainage System

Stainless Steel Drainage Products



www.josam.com

Michigan City, IN | 800.365.6726

Ver. 0124